



Integrated Plan Implementation Quarterly Report

Q1 2026:

January 1 to March 31, 2026

June 11, 2026



Meeting Agenda

- Welcoming Remarks
- Introductions
- Update on MDC's Integrated Plan, with current focus on North Hartford (See Presentation Outline, Slide 3)
 - Quarterly Report from January 1 through March 31, 2026 (Q1 2026)
 - An update on projects completed and under construction
 - A schedule for projects under construction or yet to start construction
 - A status of use of minority and disadvantaged business enterprises, including efforts and success at recruiting labor and contractors from the area where projects are or will be occurring
 - Next Quarterly Report Meeting – **September 10, 2026**; covering period of April 1, 2026 – June 30, 2026 (Q2 2026)
- Public Comments and Questions

Presentation Outline

- Background on focus area (North Hartford)
- Quarterly and Annual Consent Order (CO) reporting requirements
- Overview of CO projects in:
 - North Hartford
 - Hartford (outside of North Hartford)
 - Outside Hartford
- Update on key performance indicators
- MDC's recruiting efforts for Small, Minority, Women and Disadvantaged Businesses (SBE, MBE, WBE, DBE) and Local Labor
- Closing remarks

The North Hartford Area

MDC listened to the North Hartford Community and responded with an altered program that provides immediate community benefit



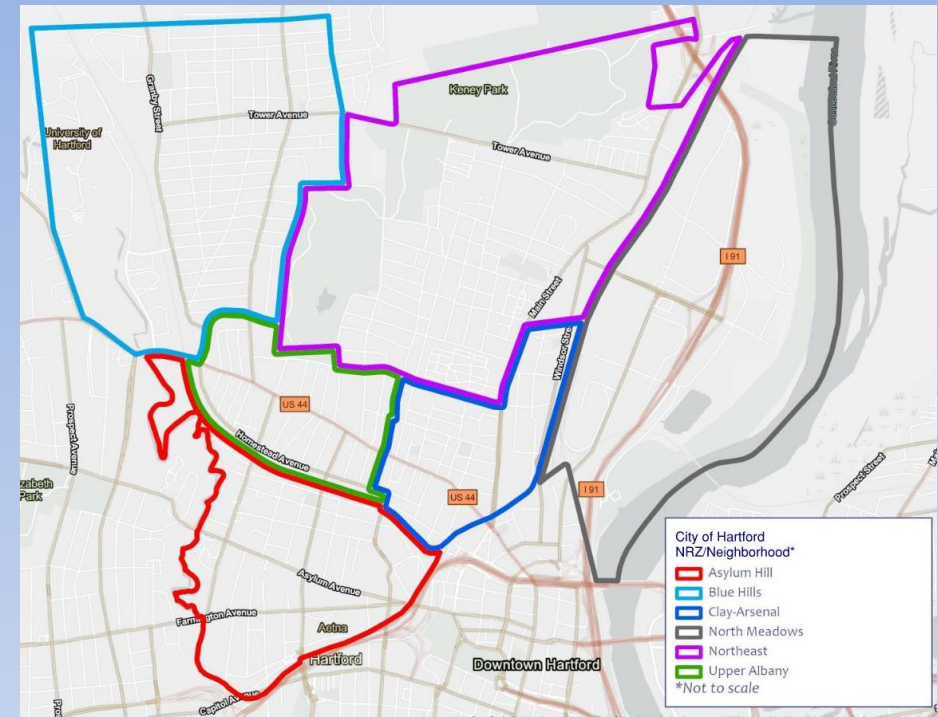
Sewer Lining
(Project: Sewer & House Connection Rehabilitation in Gully Brook Area)





Sewer Lining
(Project: Sewer & House Connection Rehabilitation in Gully Brook Area)




Manhole Install
(Project: Westland Street Area (CFQ-13))





State of Connecticut
 Ned Lamont, Governor
Department of Energy and Environmental Protection
 Katie S. Dykes, Commissioner


Gully Brook Area Sewer & Lateral Rehabilitation/Repair

Environmental Protection for The Metropolitan District


 \$20,373,770.00 Contract Total
 \$10,177,885.00 State & Federal Grant
 \$9,895,624.35 State & Federal Loan
 \$300,260.65 Local Share

From the Connecticut DEEP Clean Water Fund



Consent Order Modification Reporting Requirements

Quarterly Reporting Required under Consent Order Modification

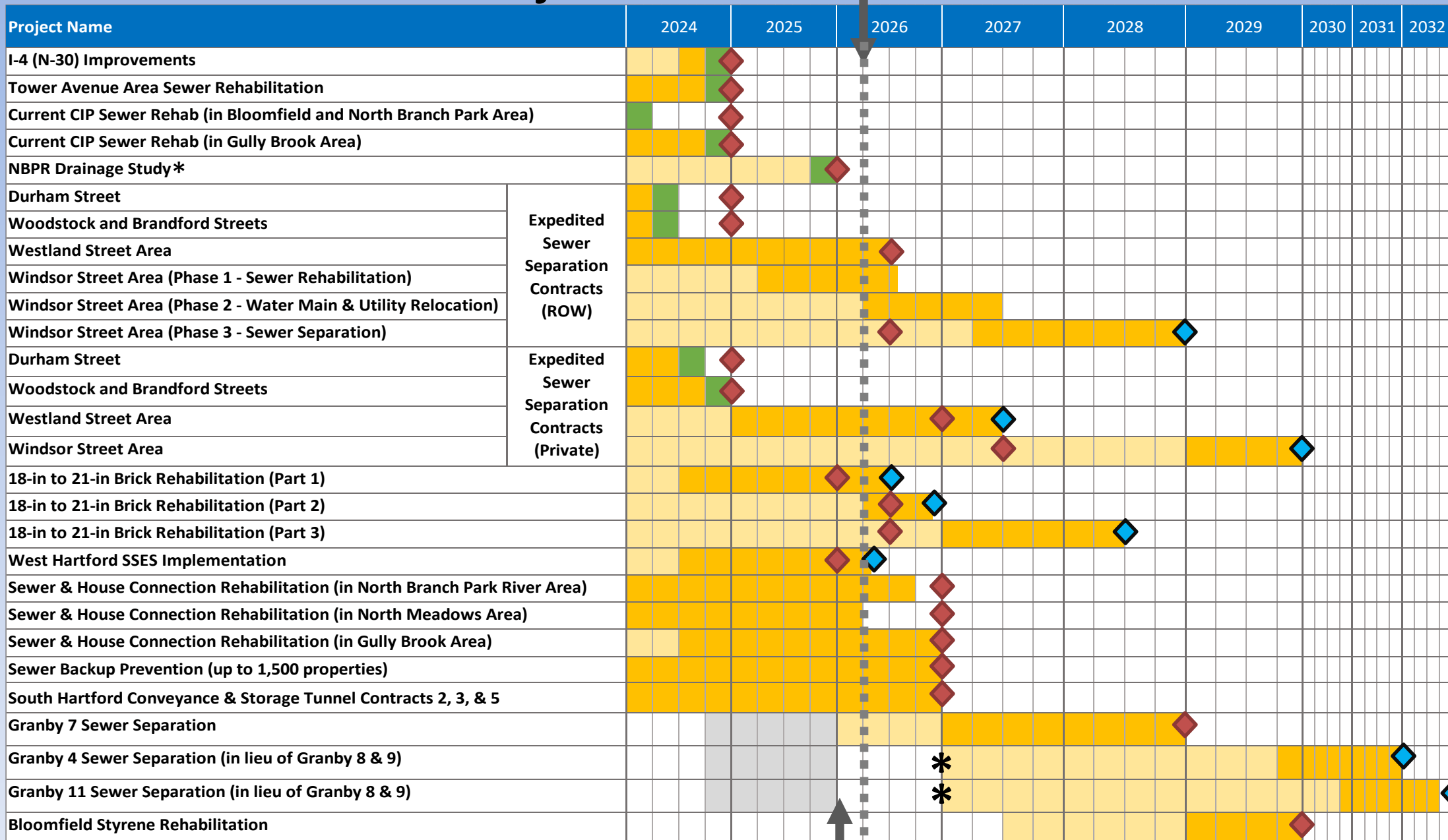
- 1) An update on projects completed and under construction
- 2) A schedule for projects under construction or yet to start construction
- 3) A status of use of minority and disadvantaged business enterprises, including efforts and success at recruiting labor and contractors from the area where projects are or will be occurring
- 4) Other items as requested by Commissioner
 - *None received this quarter*

Other Items Voluntarily Included by the MDC

- MDC committed to 30% Hartford based workforce for North Hartford work associated with Consent Order modification
 - 30% based on similar City of Hartford goal on municipal projects

Consent Order Projects & Timeline

To view bids, please visit: <https://themdc.org/ebid>



◆ Consent Order Deadline

* Partial Draft submitted in 2024

◆ Consent Order Deadline (pending DEEP approval)

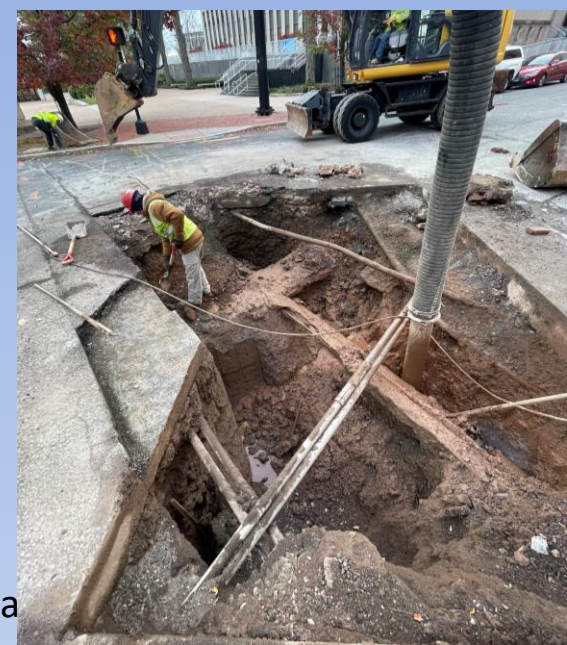
* Assumed start date (contingent on DEEP approval)

Preliminary Design
 Final Design
 Construction
 Completed

Consent Order Project Schedule Update

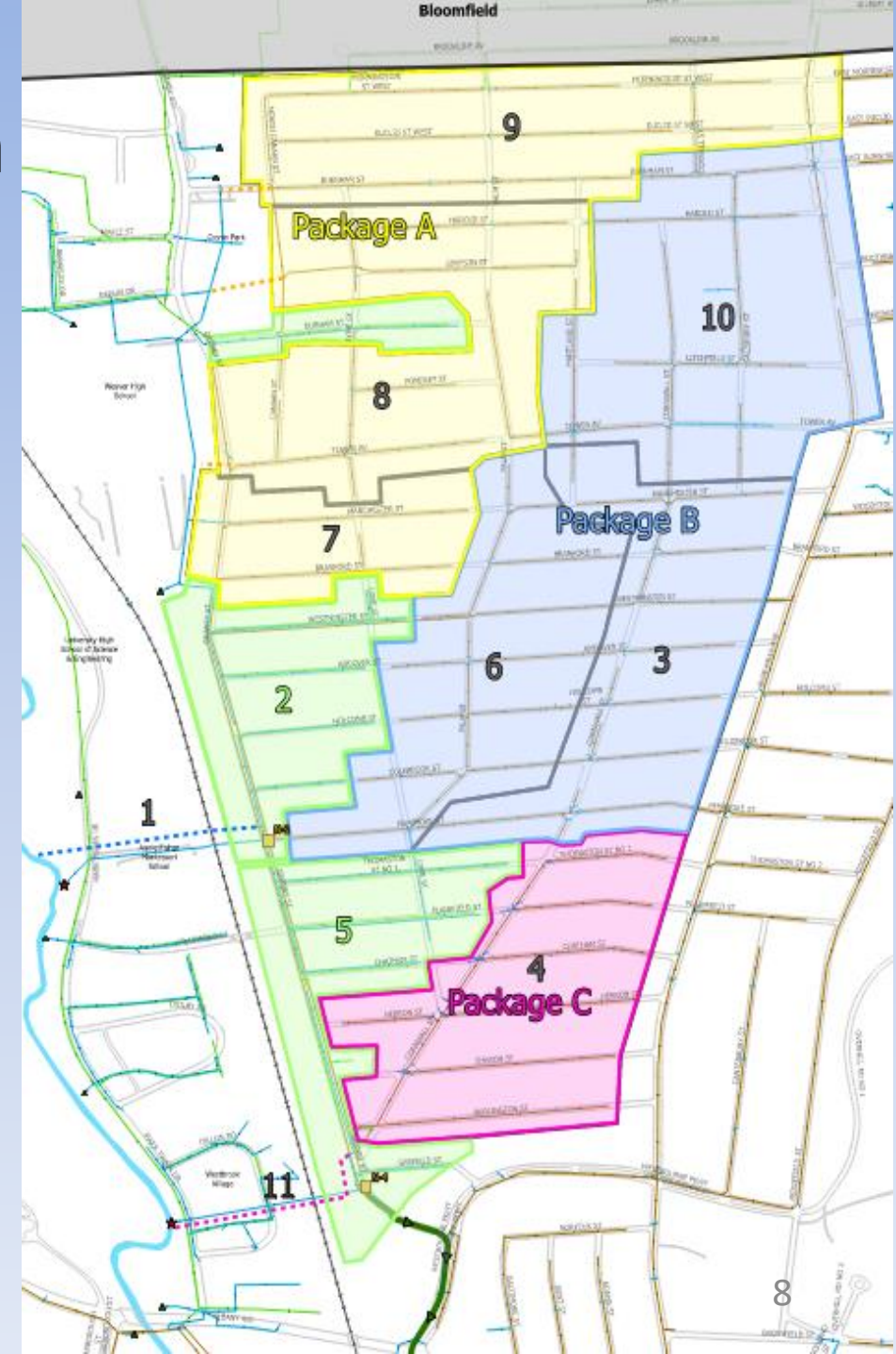
MDC Working with CT DEEP on Consent Oder (CO) Modifications (request submitted to CT DEEP on 12/2/2025)

- West Hartford SSES (WHSSSES)
 - Significant increase in quantity of mainline and lateral excavation repairs (in advance of lining)
 - Approximately 92% of project completed
 - Requested modified CO completion date of 4/30/26, to be adjusted based on actual schedule
- 18"-21" Brick Sewer Rehabilitation (35,000 LF)
 - Part 1 (15,000 LF): Significant repairs and utility conflicts identified in Market Street/Central ROW Area. Approximately 90% of project completed by 12/31/25 CO Milestone. Requested modified CO completion date of 6/30/26.
 - Part 2 (8,000 LF): Project advertised on 12/9/25. Requested modified CO completion date of 11/1/26 due to anticipated delayed start due to winter weather. NTP issued April 2026.
 - Part 3 (12,000 LF): Project design began January 2026, with design completion in January 2027. Requested modified CO completion date from 7/1/26 to 7/1/28 due to unknowns associated with utility conflicts and potential required utility relocations. Project design being coordinated with large watermain projects. Future updates coming.
- Windsor Street Sewer Separation
 - Phase 1 (Sewer Rehabilitation): Construction expected to be completed by July 2026. This phase is being moved to North Meadows 5/6/7 and will use the milestone of 12/31/2026.
 - Phase 2 (Water Main Relocation): Project advertised 1/30/2026, with bids opened 3/9/2026. DPH approval received in May. Construction expected to start in Q3.
 - Phase 3 (Sewer Separation – Public ROW): Construction expected to begin in spring 2027 (pending water main schedule) and completed by end of 2028. Requested modified CO completion date from 7/1/26 to 12/31/28.
- Granby Sewer Separation Phasing (See subsequent Slides)



Consent Order Project Schedule Update: Granby Separation – Recommended Plan

- Proceed with Package C (Granby 4 and 11)
 - New 72" outfall through Westbrook Village (Granby 11)
 - Sewer separation of Cornwall (Granby to Thomaston) and adjacent streets (Granby 4)
 - Help abate flooding at intersection of Granby and Cornwall.
- Proceed with Granby 7:
 - Design proceeding in concurrence with COH maintenance on 108" conduit
 - Project can proceed in expedited manner compared to Package C.
 - Maintains progress in NBPR Area.
 - Completion in accordance with current CO Milestone date of 12/31/28
- Requires CO modifications:
 - Remove Granby 8 & 9 from CO
 - Add Granby 4 & 11 to CO:
 - Granby 4 CO Milestone Date = 12/31/31
 - Granby 11 CO Milestone Date = 12/31/32
 - **Requires CT DEEP approval**



Expedited Sewer Separation Program – Example Construction Progress



New Storm Drain Installation
(Project: Westland Street Area Expedited Sewer Separation)

Tower Avenue Area Sewer Rehabilitation Project



Project Overview

The scope of the project includes lining of mainline sewers and sewer house connection point repairs, rehabilitation of sewer manholes and reconnection of catch basins to a storm system. Sewer lining was performed to help remove infiltration (groundwater that seeps pipe through cracks or holes) and improve the structural integrity of the pipe and renew remaining life. It is a "no-dig" type of construction thereby minimizing the impact to property owners and residents. The project included 359 properties and was substantially completed in December 2024 as part of the MDC's Integrated Plan with CT DEEP.



Project Outreach

Project outreach by MDC staff and contractors was key to keep residents informed throughout the construction process for both public right of way and private property improvements. This constant communication was important for the construction improvements but also the restoration of the sidewalks, lawns and tree planting.

\$6.9M project cost
359 properties
39% of workforce hours were Hartford residents

Work Completed

- 1.8 miles of sewer main lined
- 300 sewer laterals/private house connections lined (2 miles)
- 58 sewer point repairs made
- 71 manholes lined



Woodstock and Branford Sewer Separation Project



Project Overview

The Woodstock and Branford Streets sewer separation project involved several key improvements, including the lining of sewer main lines, sewer laterals, and manholes. Additionally, a dedicated storm drain was installed, and new storm laterals were connected, with permissions granted by property owners, to convey private property storm related flow directly into the storm main. The project included 72 properties and was substantially completed in fall of 2024 as part of the MDC's Integrated Plan with CT DEEP, helping achieve environmental regulatory goals while providing a community benefit.

Private Property Work

Sewer Backup Prevention: Installation of backwater valves, check valves, and sump pumps.

Sewer Infiltration Inflow Separation: Removal of infiltration via lateral lining and removal of inflow via sewer separation such as directing gutters, yard drains and foundation drains to newly constructed storm drains.

\$1.7M in sewer improvements

\$1.4M additional water main improvements

43% of workforce hours were Hartford residents

Project Outreach

Project outreach by MDC staff and contractors was key to keeping residents informed throughout the construction process for both public right of way and private property improvements. This constant communication was important not just for the construction improvements but also the restoration of the road, sidewalks, lawns and tree planting.

Work Completed

- 2,060 feet of main line sewer lined
- 67 sewer lateral private house connections lined
- 321 feet of main line storm installed
- 2,840 feet of new water main installed
- 72 storm drain stubs installed
- 85 new water services installed
- 42 basement assessments completed
- 36 basement protection improvements completed
- 35 private property storm laterals installed



Expedited Sewer Separation Program - Example Construction Progress Photos



Project: Woodstock and Branford Streets Expedited Sewer Separation

Prior to improvements: Roof leader from gutters enters basement and connects to sewer

After improvements: Roof leader from gutters diverted to new storm lateral and new sump pump to pump internal/foundation drains to new storm lateral



Project: Woodstock and Branford Streets Expedited Sewer Separation

Example of new storm lateral installed for roof leaders and sump pump connection

Consent Order Projects: NRZ Impact and CSO Reduction


Project Name		Neighborhood Revitalization Zone and/or Neighborhood	1 Yr CSO Reduction (MG)	Typical Year CSO Reduction (MG)
Current CIP Sewer Rehab (in Bloomfield and North Branch Park Area)		Blue Hills, Clay Arsenal, South Downtown, South Behind the Rocks	0.2	2.4
NBPR Drainage Study		Blue Hills, West End, Asylum Hill	*	*
Sewer & House Connection Rehabilitation (in North Branch Park River Area)		Blue Hills	0.9	11.5
Granby 7 Sewer Separation		Blue Hills	0.4	3.8
Granby 8 Sewer Separation		Blue Hills	0.3	3.4
Granby 9 Sewer Separation		Blue Hills	0.4	3.6
Durham Street	Expedited Sewer Separation Contracts (ROW)	Blue Hills	0.1	1.2
Woodstock and Brandford Streets		Blue Hills	0.1	1.4
Westland Street Area		Northeast	0.4***	4.5***
Windsor Street Area		North Meadows	1.1	14.3
Expedited Sewer Separation Contracts (Private Property Work)		Blue Hills, Northeast, North Meadows	**	**
Sewer & House Connection Rehabilitation (in Gully Brook Area)		Northeast	0.9	11.0
Tower Avenue Area Sewer Rehabilitation		Northeast	0.2	3.0
Sewer & House Connection Rehabilitation (in North Meadows Area)		North Meadows	1.0	28.4
Current CIP Sewer Rehab (in Gully Brook Area)		Asylum Hill, Clay Arsenal, South Behind the Rocks	1.3	10.0
18-in to 21-in Brick Rehabilitation (Part 1, Part 2, and Part 3)		Asylum Hill, Clay Arsenal, South End, Marg	0.8	7.0
I-4 (N-30) Improvements		West End	<0.1	<0.1
Sewer Backup Prevention (up to 1,500 properties)		All North Hartford NRZs/Neighborhoods	**	**
South Hartford Conveyance & Storage Tunnel Contracts 2, 3, & 5		South End, Marg, South Behind the Rocks	3.8	21.9
West Hartford SSES Implementation		N/A	0.2	1.2
Bloomfield Styrene Rehabilitation		N/A	<0.1	<0.1

*CSO Reductions for the NBPR Drainage Study included in individual Granby Separation Contracts

** CSO Reductions associated with Private Property Improvements included in associated ROW project reductions

*** Values were updated based on revised runs to include additional separation

COMPLETED REDUCTION TO DATE	
1.9 MG (15%)	18.0 MG (14%)

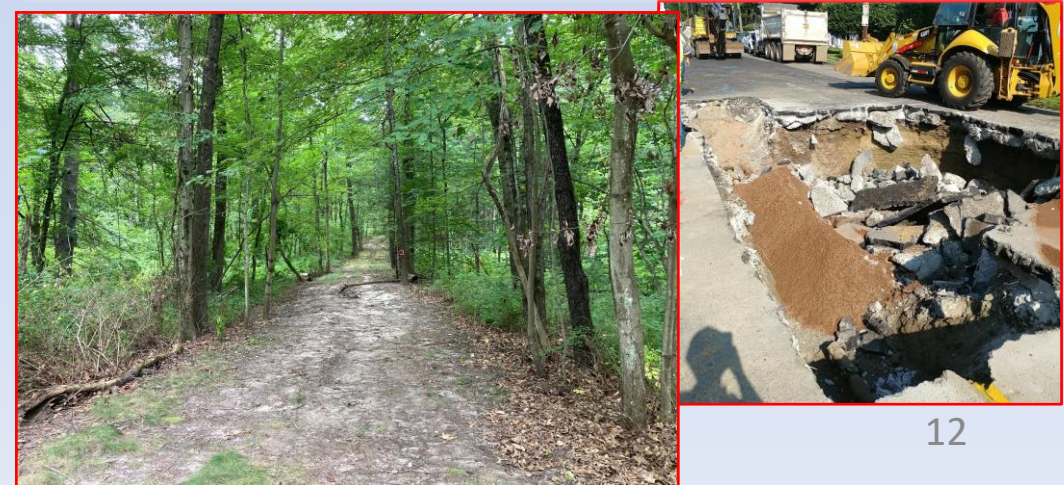
 Completed

Additional Sewer Improvement Projects

Non-Consent Order (2019 through Q1 2026)

- Clearing Sewer Easements on Private Property
 - Completed = Bloomfield, Rocky Hill, East Hartford, Windsor, Newington
 - In progress = Wethersfield
 - West Hartford and Hartford future 2026 -2027 work
- Easement Sewer Rehabilitation
 - Bloomfield Phase 1 completed, subsequent phases in design
 - Other Member Towns to be evaluated/scheduled
- On-Call Sewer Rehabilitation/Repair
 - 303,890 feet sewer main rehabilitated from 2019 to 2025
 - On-Call sewer rehab to begin again in Q3 2026
 - Asset management/paving program coordination

Town	Easement Clearing Length (feet)
Bloomfield	98,000 (completed)
Rocky Hill	59,100 (completed)
East Hartford	66,200 (completed)
Windsor	132,300 (completed)
Newington	51,300 (completed)
Wethersfield	59,200 (in progress)
Hartford	19,000 (2026-2027)
West Hartford	54,300 (2026-2027)
Total (feet)	539,400
Total (miles)	102



North Hartford Project Overall Status

PROJECT STATUS

Preliminary Design

Final Design

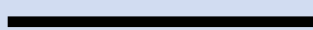
Construction

Completed

PROJECT TYPE



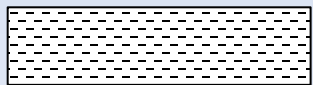
Sewer Separation



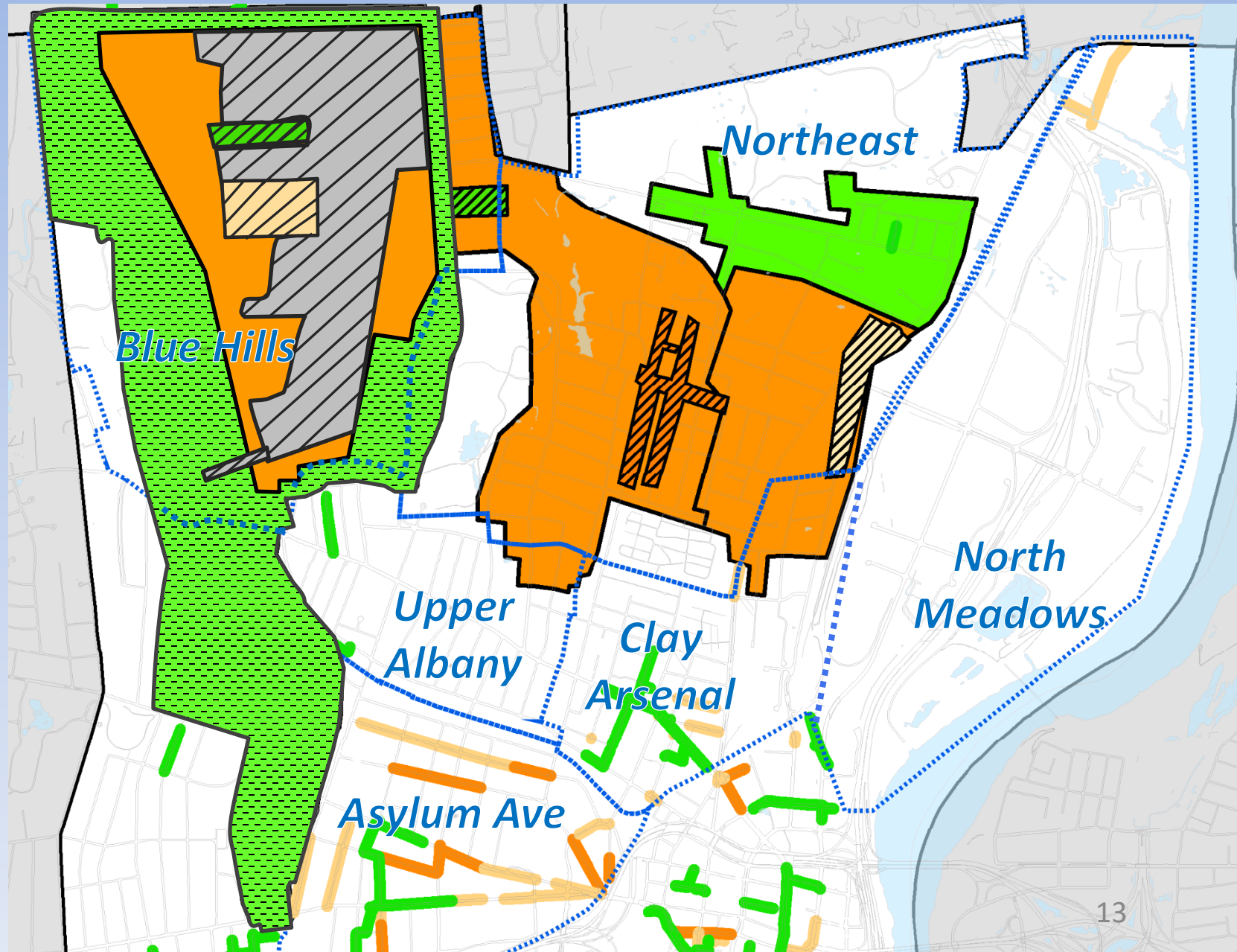
Sewermain Rehabilitation



Sewermain & Lateral Rehabilitation



Drainage Study



Consent Order Projects (as of 3/31/26): North Hartford

Sewer & House Connection Rehabilitation (in North Branch Park River Area):

Rehabilitation of sewer mains and house connections upstream of CSOs N-2 and N-4

Granby 1, 3, 4, 6, 8, 9, 10, 11 Sewer Separation:
Future scope similar to Granby 7

Granby 7 Sewer Separation:

Sewer separation with new storm drains and private property disconnections (final location based on North Branch Park River Study)

Tower Avenue Area Sewer Rehabilitation:

Rehabilitation of sewer mains and house connections upstream of CSOs NM-2, NM-3, and NM-4

Expedited Sewer Separation Contracts (ROW):

Construction of storm drains in streets
(Additional separation added per MDC review)

Sewer & House Connection Rehabilitation (in North Meadows Area)

Rehabilitation of sewer mains and house connections upstream of CSOs NM-5, NM-6, and NM-7

Expedited Sewer Separation Contracts (Private):

Private property storm separation (to follow ROW Separation Contracts)

North Branch Park River Drainage Study:

Evaluating the North Branch Park River and surrounding sewer and drainage infrastructure in support of future river improvements and sewer separation

Sewer & House Connection Rehabilitation (in Gully Brook Area):

Rehabilitation of sewer mains and house connections upstream of CSO G-13W

- Preliminary Design
- Final Design
- Completed
- Construction

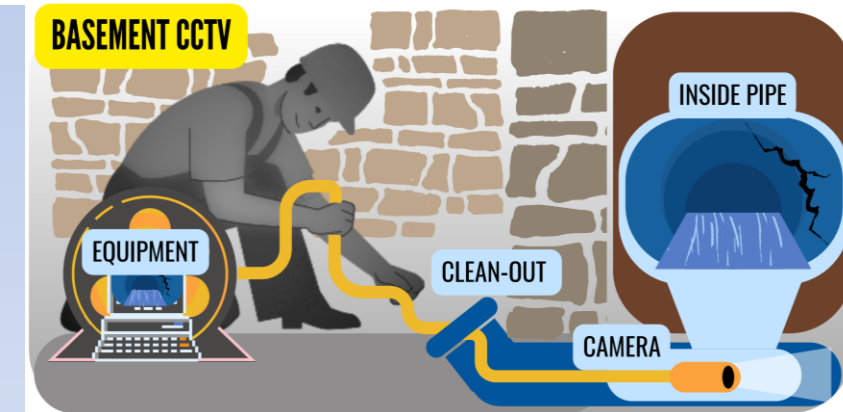
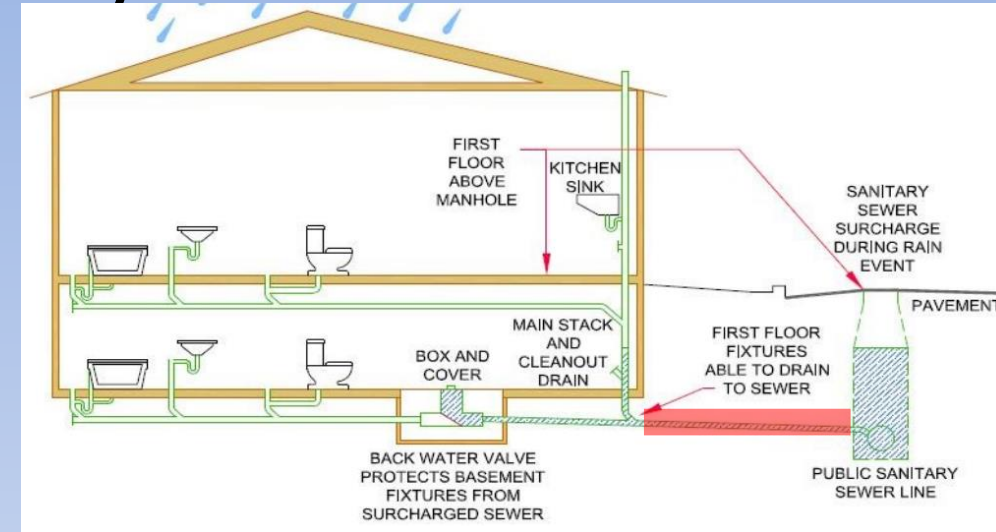
Consent Order Projects: Private Property Benefit

Sewer Backup Prevention Program (“Backwater Valve Program”)

- Separates homes’ foundation drains (via installing sump pumps) and gutters from the sewer system, reducing surcharging during wet weather
- Install backwater valves & sump pumps, etc. to prevent basement backups, **District-wide; at no cost** to property owner.
- \$12.2 million (up to 1,500 homes) for North Hartford properties (Consent Order project)
- <https://themdc.org/utility-services/backwater-valve-program/>
- To **schedule a free assessment** of your property, contact MDC Utility Services at **(860) 278-7850, ext. 3123**

Sewer House Connection Program – voluntarily included by MDC

- MDC Board initiative to provide same benefit **District-wide** that was being offered to North Hartford residents
- Emergency and non-emergency maintenance and inspection services **at no cost** to the property owner
- Provides funding for renewal of the house connection, if needed
- <https://themdc.org/utility-services/sewer-house-connection-program/>



Contractors for both programs are anticipated to be all SBE (Small Business Enterprise)

Example Sewer Backup Prevention Program Improvements



Previous washing line

New washing machine line protected by check valve

New cleanout

Previous BWV pit

New sump pump in old BWV pit

Prior to improvements:

Washing machine drain line and old BWV pit with no protection



After improvements:

Check valve installed to protect washing machine; new cleanout installed; new sump pump to replace the old BWV pit

Example Sewer Backup Prevention Program Improvements



New double bay plastic sink and drain piping (new check valve also installed not in photo)



New sump pump (with battery backup) and new Backwater Valve (BWV) inside irrigation style box



Sump pump discharge to lawn

Sewer Backup Prevention Program (SBPP) in North Hartford

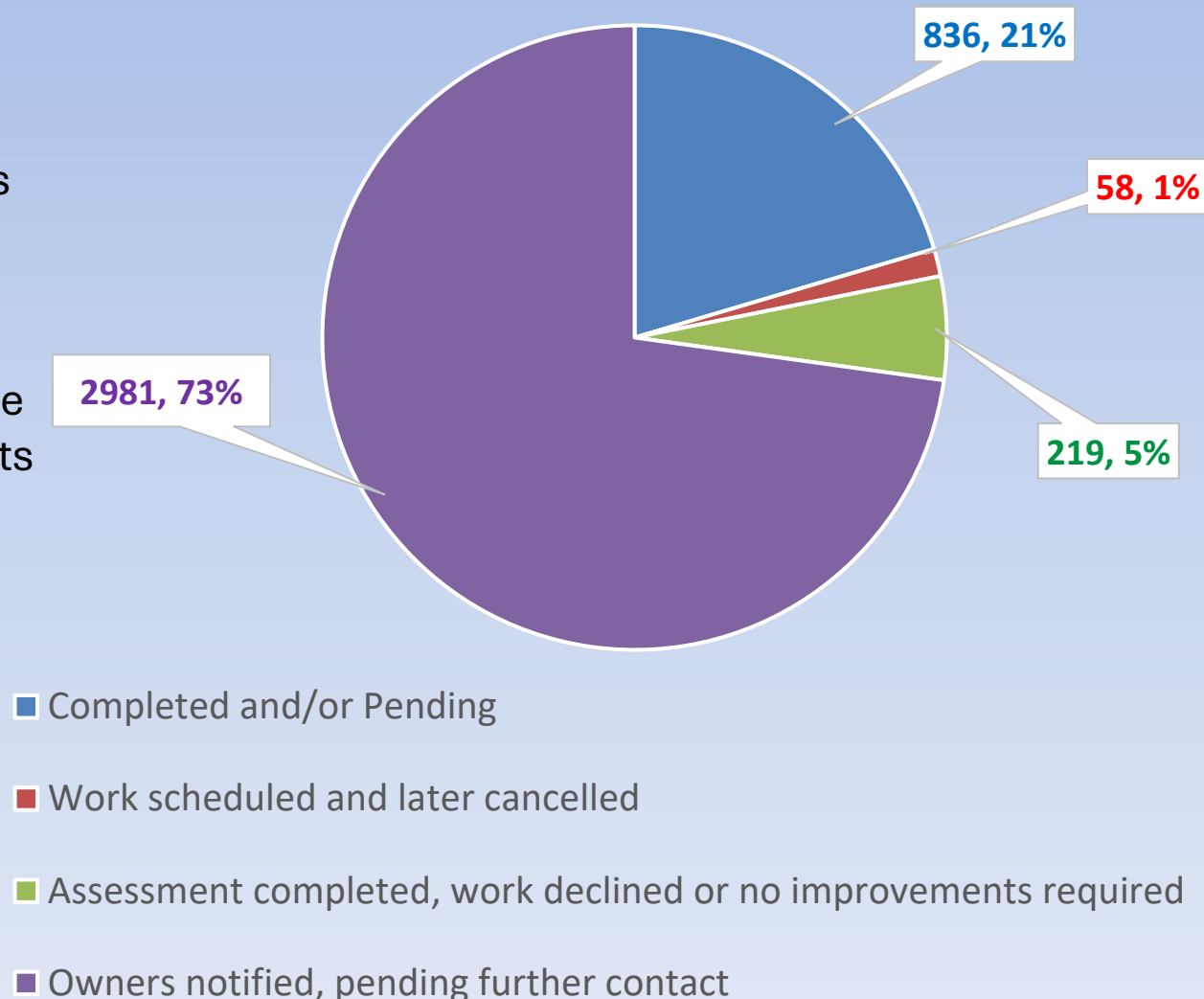
Project Name	2023	2024	2025	2026	2027	2028	2029
Sewer Backup Prevention	■	■	■	■	■		

Total North Hartford SBPP to Date

Q3 2023 through Q1 2026:

- 4,231 properties contacted
- 1,113 properties responded /assessments completed
- 836 properties with recommended improvements
 - 75% of Assessments completed have resulted in homeowner improvements
 - 559 properties with completed improvements

Note that quantities to date were updated recently based on updated accounting



Sewer Backup Prevention and Sewer House Connection Programs

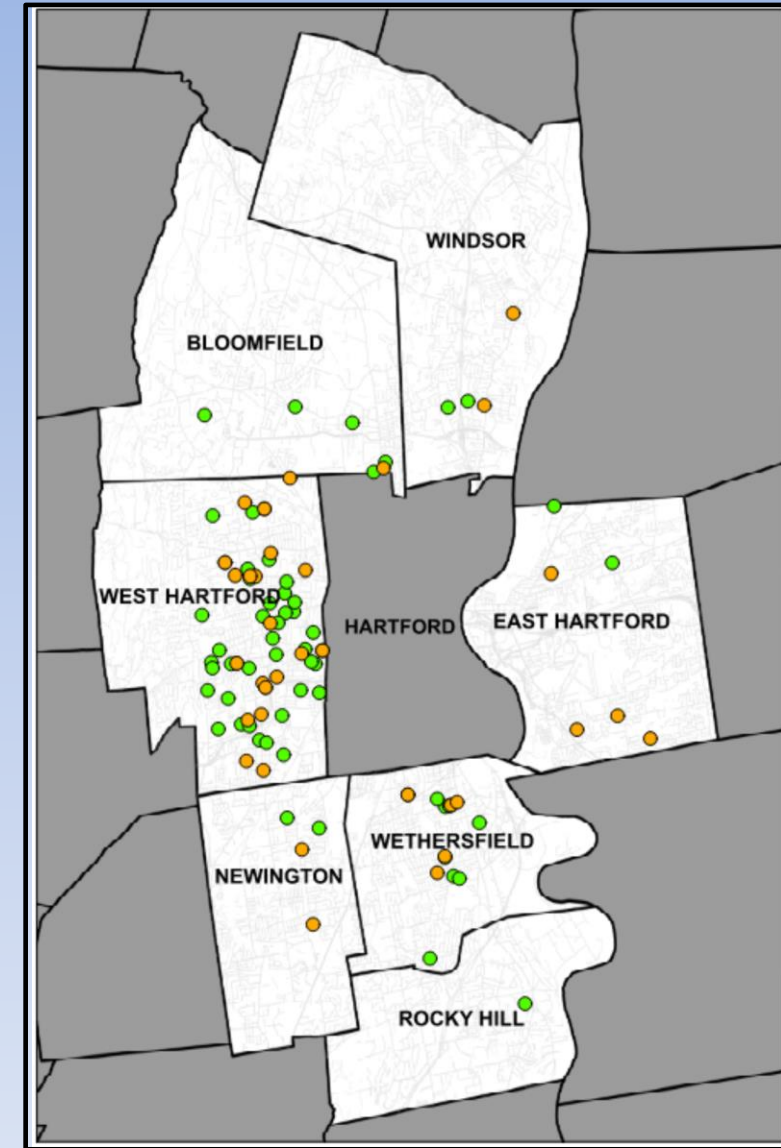
2026 Q1 Properties that Participated*

- 229 Sewer Backup Prevention Properties
- 65 Sewer House Connection Properties

(294 Total Properties)

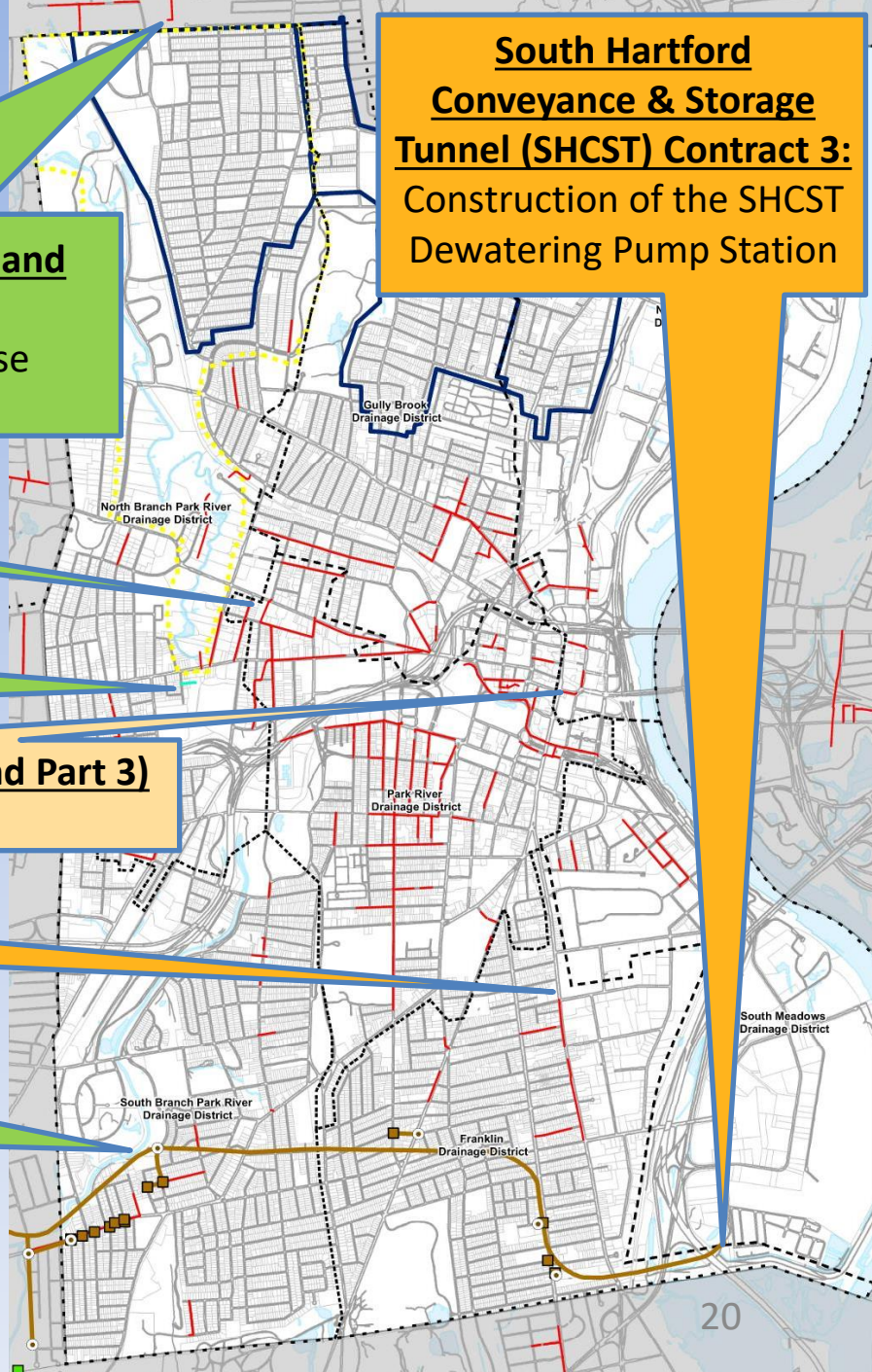
* Includes all properties that responded, scheduled appointments, received assessments, had improvements recommended, and/or had work completed

Hartford



Outside of Hartford

Consent Order Projects (as of 3/31/26): Outside of North Hartford



South Hartford Conveyance & Storage Tunnel (SHCST) Contract 3:
Construction of the SHCST Dewatering Pump Station

Current CIP Sewer Rehab (in Bloomfield and North Branch Park River):
Rehabilitation of sewer mains and house connections

Current CIP Sewer Rehab (in Gully Brook Area):
Rehabilitation of sewer mains and house connections

I-4 (N-30) Improvements:
Rehabilitation of sewer mains downstream of CSO I-4 (N-30)

18-in to 21-in Brick Rehabilitation (Part 2 and Part 3)
Rehabilitation of brick sewer mains

18-in to 21-in Brick Rehabilitation (Part 1)
Rehabilitation of brick sewer mains

South Hartford Conveyance & Storage Tunnel (SHCST) Contracts 2 & 5:
Construction of the SHCST, drop shafts and consolidation conduits



- Final Design
- Completed
- Construction
- Preliminary Design
- Sewer Rehab

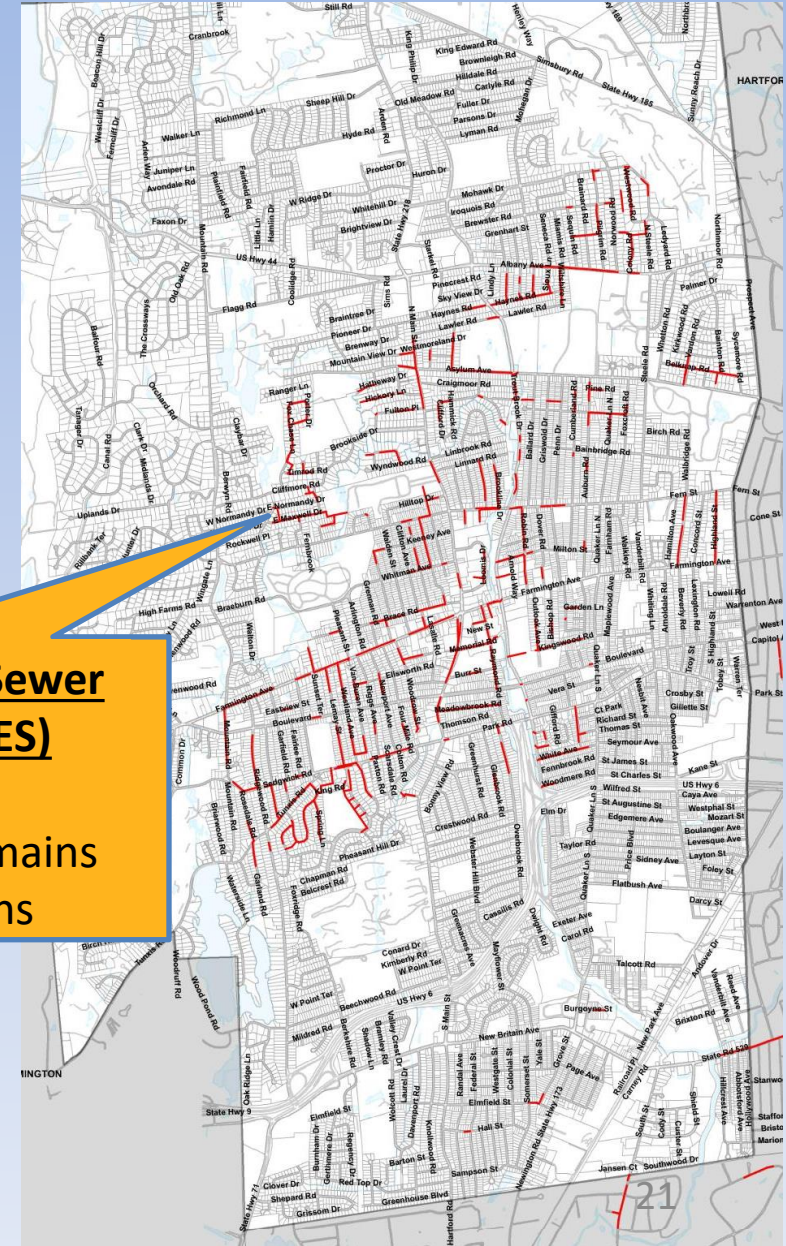
Consent Order Projects (as of 3/31/26): Outside of Hartford

Bloomfield Styrene Rehabilitation:
Rehabilitation of styrene rubber sewer mains

Bloomfield and North Branch Park River Area Sewer Rehabilitation:
Rehabilitation of sewer mains and house connections

West Hartford Sanitary Sewer Evaluation Survey (SSES) Implementation:
Rehabilitation of sewer mains and house connections

- Not Yet Started
- Preliminary Design
- Final Design
- Construction
- Completed
- Sewer Rehab



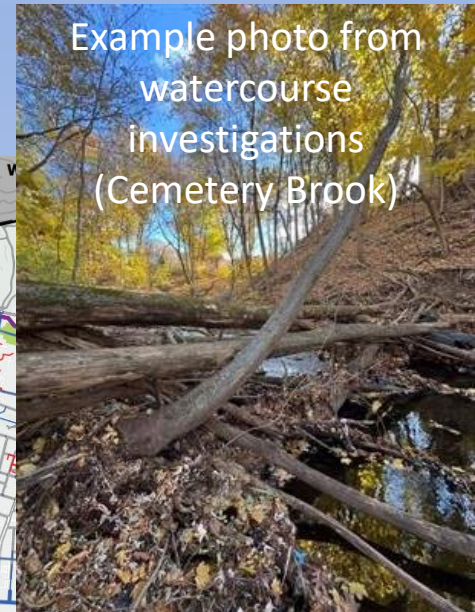
North Branch Park River Drainage Study Update

- **Importance of Study**
 - NBPR has sediment buildup (i.e., from streets) and blockages (i.e., from downed trees); contributes to street and localized flooding and backups
 - Study needed to determine
 - Required flood control and stream improvements (COH priority)
 - Approach to remove stormwater from sewers; eliminate CSOs (MDC priority)
- **Short term improvements performed to date**
 - City cleaned Park River Conduit inlet and Granby St conduit in 2024
 - Durham Street ROW and private property sewer separation completed
- **Update for 2026 (Q1)**
 - Executive summary drafted in Q1 2026 (Project completed, final report)

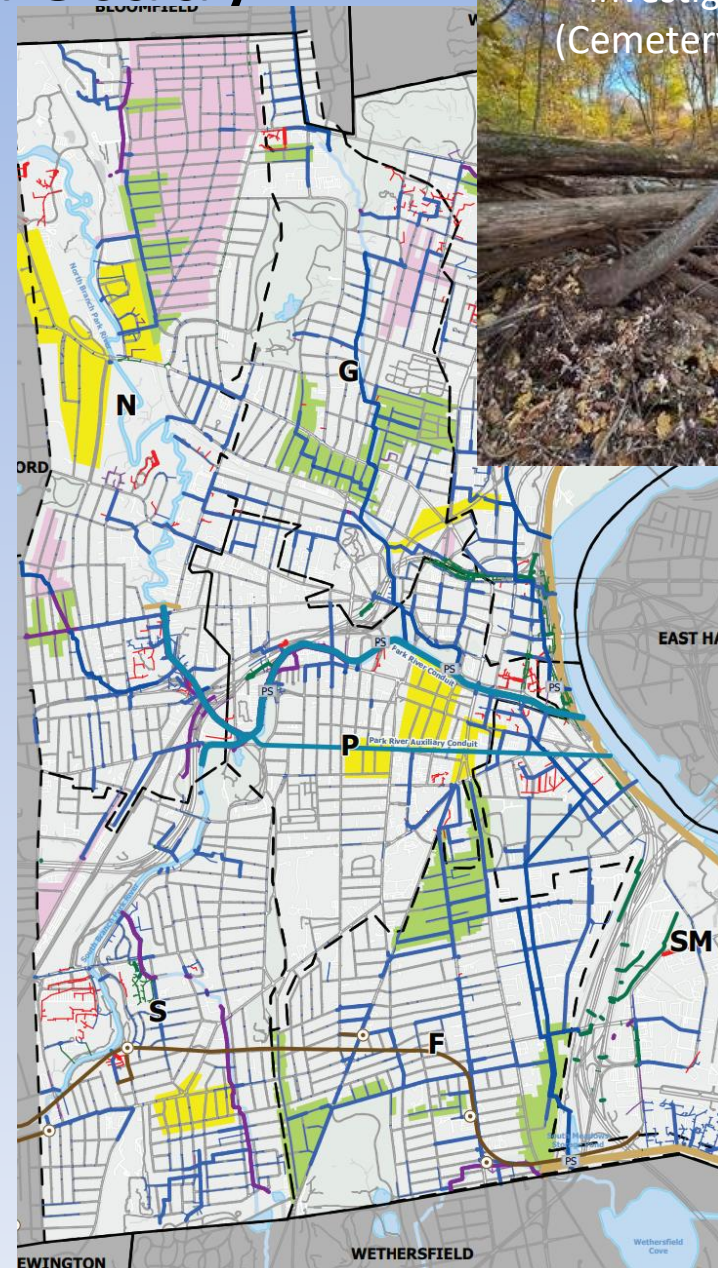


Hartford Drainage and Sewer Separation Study

Example photo from watercourse investigations (Cemetery Brook)



- **City-wide drainage study began in Q3 2025**
 - Similar to North Branch Park River Drainage Study
 - Will encompass remainder of City
 - Will improve understanding of City drainage network
- Includes conceptual layout of sewer separation throughout Hartford
- Pre-cursor to 2028 CSO LTCP/IP Update
- Will also advance proposed solution for the Franklin Ave / Wethersfield Cove contributing area to preliminary design level (**Consent Order requirement**)
- Scheduled to be completed by end of 2027
- **2026 Q1:**
 - Hydraulic modeling calibration based on temporary flow metering
 - Storm drain CCTV initiated; expected to be completed by Q2 2026
 - Utility survey collection throughout City
 - Begun hydraulic simulations of critical storm drains



Status of Projects: Key Performance Indicators (District Wide*)

Key Performance Indicators	Q1 2026 (January 1 through March 31)	2025 Annual (Jan 1, 2025 through Dec 31, 2025)	Total To Date (since 2019)
Storm drains or sanitary sewers installed (feet)	404	5,197	39,170
Sewer mains rehabilitated (feet) (miles)	7,534 (1.4)	181,940 (34.5)	595,622 (112.8)
Sewer laterals inspected (# of properties)	657	6,001	14,904
Sewer laterals renewed (# of properties) (feet)	288 (10,285)	2,966 (92,962)	5,851 (188,009)
Backwater valve/surcharge protection (# of properties)	114	695	2,435
Private property internal disconnects (# of properties)	60	426	1,151**
Sewer or storm laterals installed via separation (to property line) (# of properties)	4	32	151
Private property separation completed (# of properties)	0	27	77

*Work in all Member Towns, including North Hartford

** Quantities to date since 2019 were updated based on updated accounting

Status of Projects: Key Performance Indicators (North Hartford)

Key Performance Indicators	Q1 2026 (January 1 through March 31)	2025 Annual (Jan 1, 2025 through Dec 31, 2025)	Total To Date (since 2019)
Storm drains or sanitary sewers installed (feet)	359	4,744	14,623
Sewer mains rehabilitated (feet) (miles)	6,289 (1.2)	43,015 (8.2)	125,595 (23.8)*
Sewer laterals inspected (# of properties)	295	2,133	5,097
Sewer laterals renewed (# of properties) (feet)	128 (4,327)	1,444 (43,910)	2,410 (79,802)
Backwater valve/surcharge protection (# of properties)	22	199	770
Private property internal disconnects (# of properties)	4	159	397**
Sewer or storm laterals installed via separation (to property line) (# of properties)	4	32	151
Private property separation completed (# of properties)	0	27	77

*Note that there is approximately 80 miles of sewer in North Hartford; therefore this is approximately 30% of the system.

** Quantities to date since 2019 were updated based on updated accounting

Status of Projects: Key Performance Indicators (District Wide*)



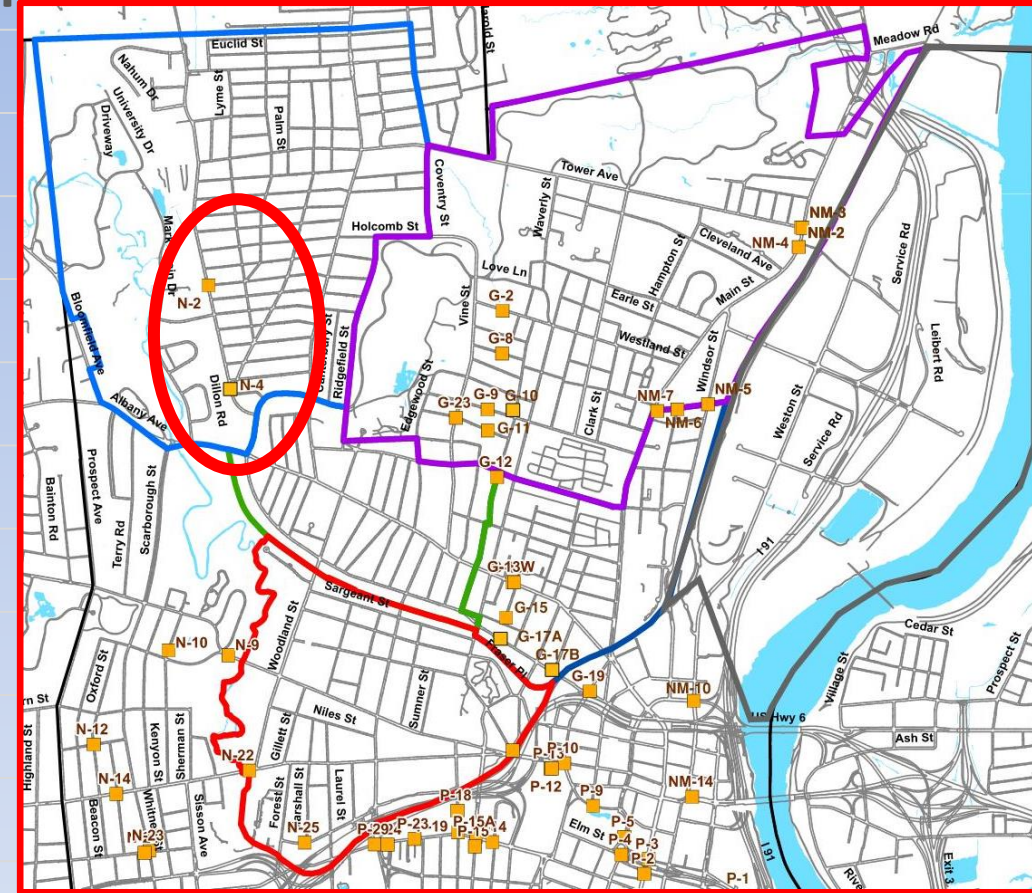
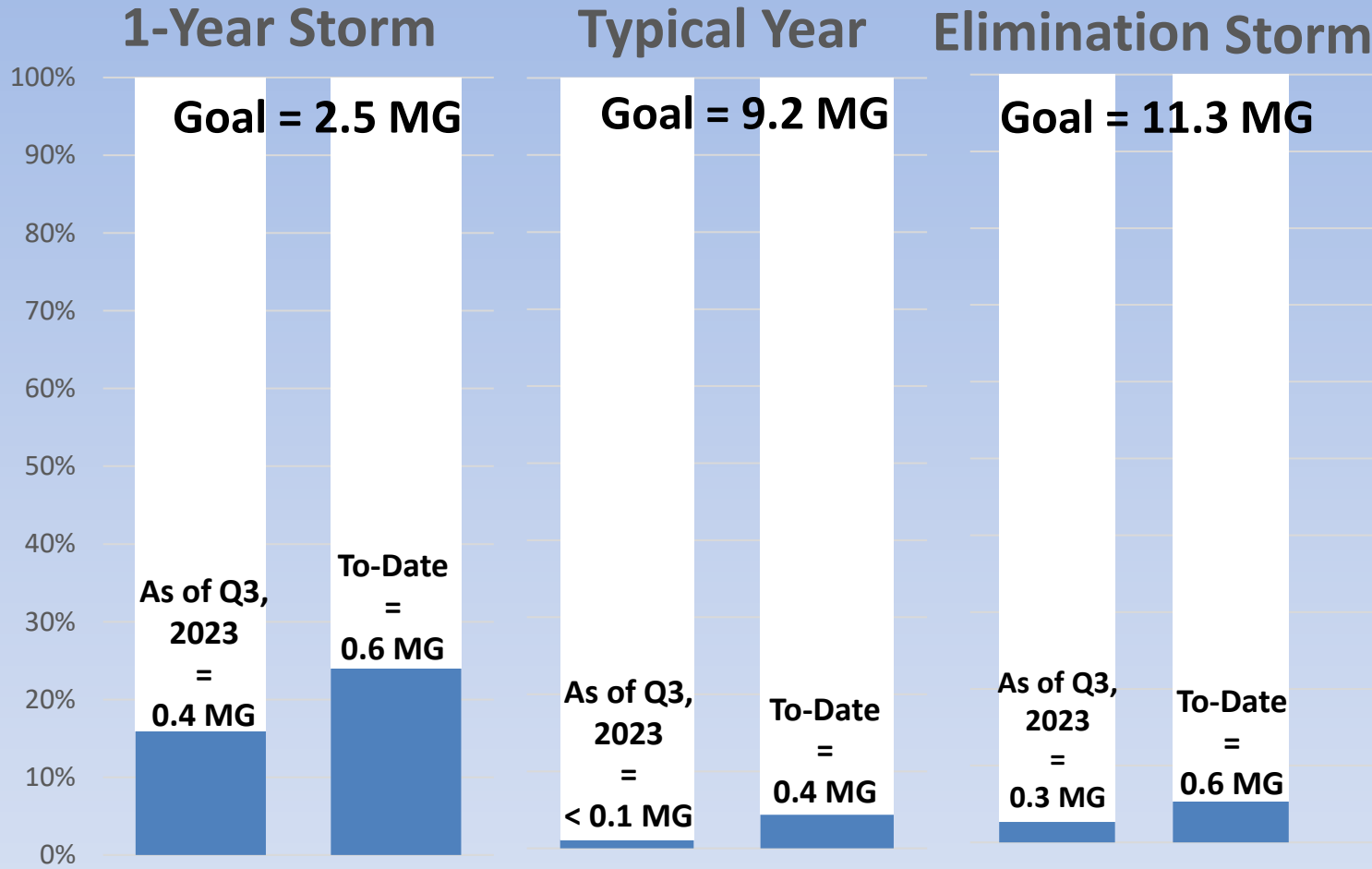
*Work in all Member Towns, including North Hartford

Status of Projects: Key Performance Indicators (North Hartford)



*Note that there is approximately 80 miles of sewer in North Hartford; therefore this is approximately 30% of the system

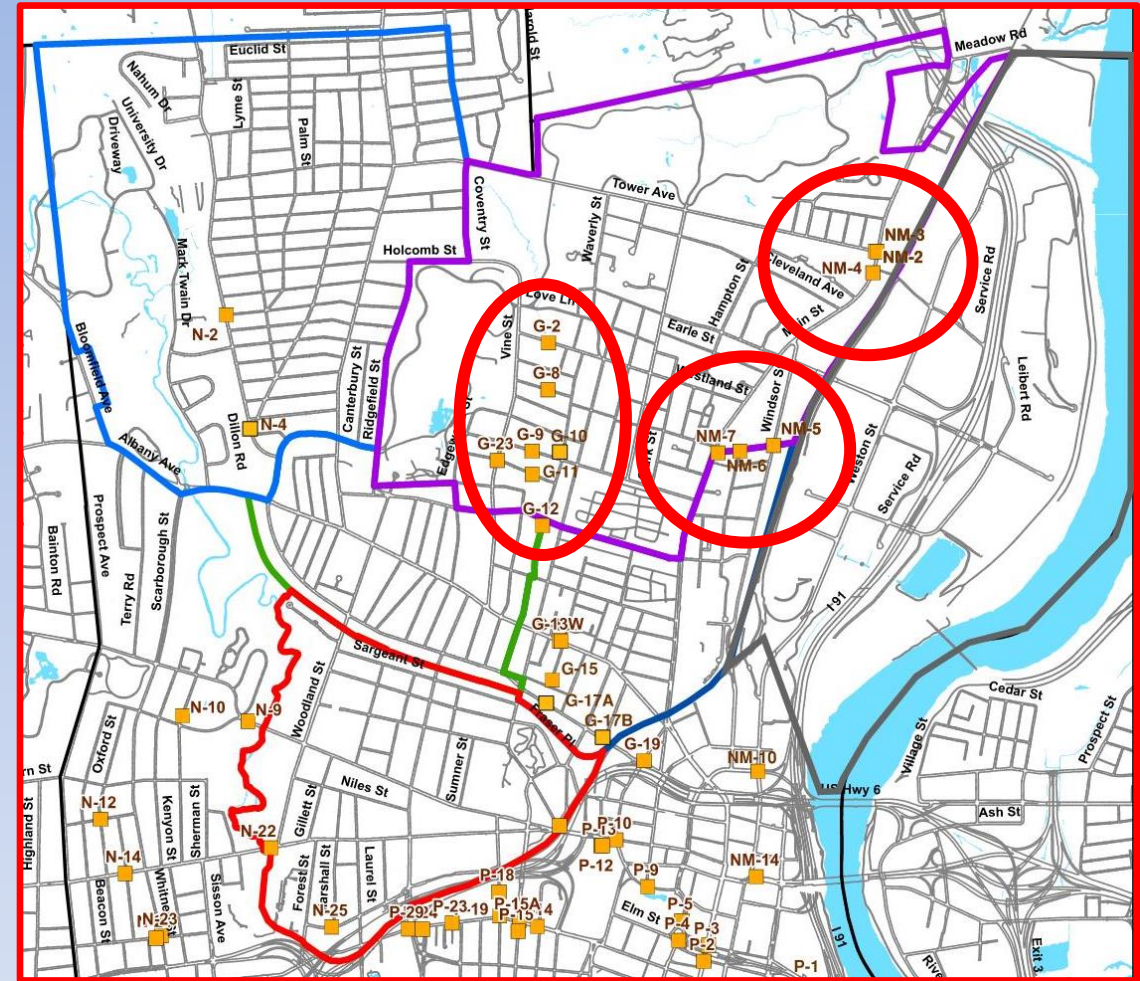
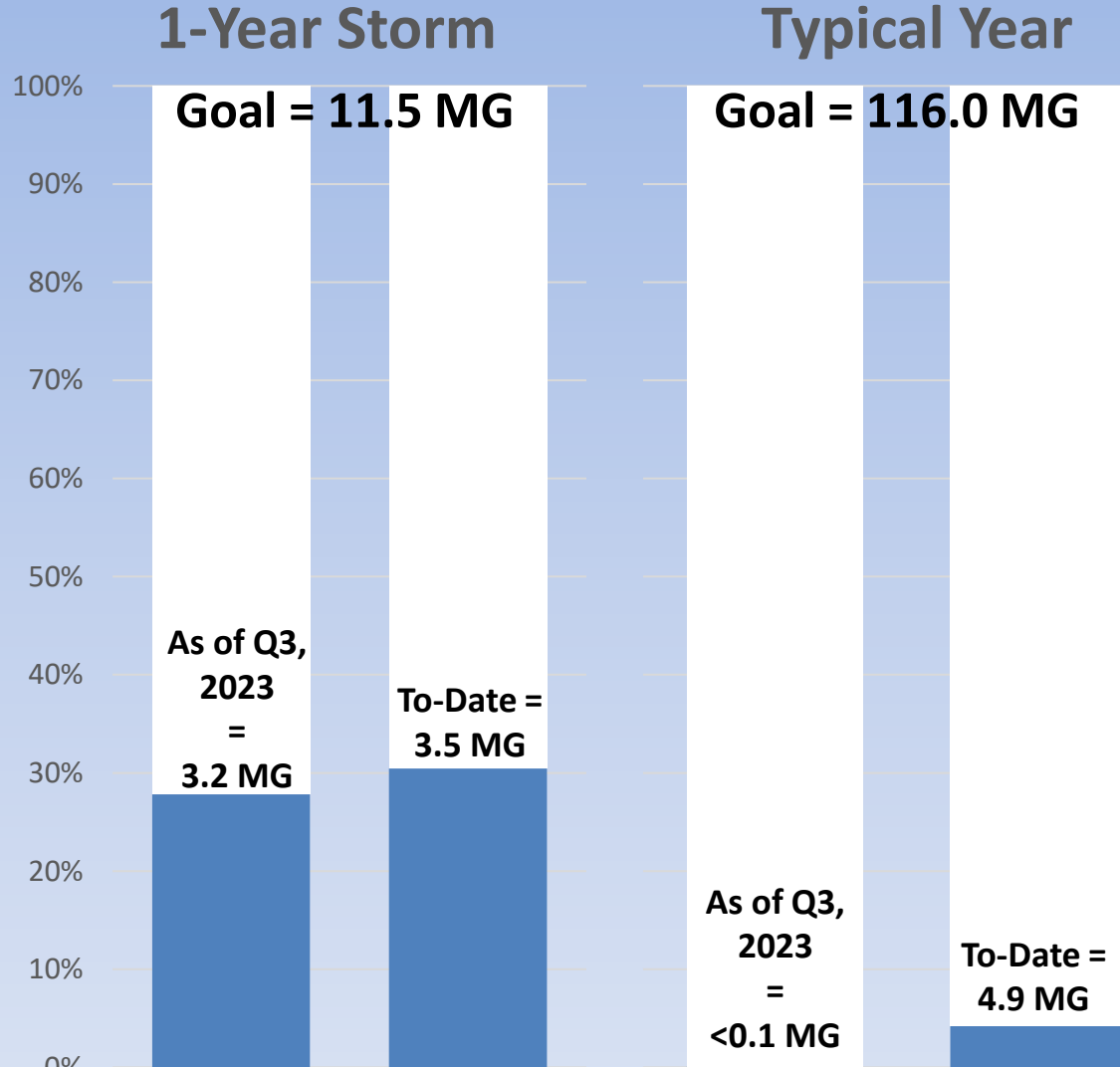
Status of Projects: N-2 and N-4 CSO Reduction



Notes:

1. Per the Consent Order, combined sewer overflows (CSOs) from N-2 and N-4 must be eliminated. Million gallon (MG) goals are per 2018 Integrated Plan.
2. Q3 2023 represents the start of work completed under current Consent Order

Status of Projects: Gully Brook & North Meadows CSO Reduction



- Notes:**
- Per the Consent Order, combined sewer overflows (CSOs) Gully Brook and North Meadows must be controlled to the 1-year storm. Goal represents the total million gallons (MG) of CSO that occurs in a 1-year storm and typical year.
 - Q3 2023 represents the start of work completed under current Consent Order

Community Outreach

Keeping people informed who live and work in the communities where construction is taking place is a critical component to the success of our projects.

- **Communication and Project Outreach**
 - On-going outreach is taking place for the House Connection (lateral lining) and Sewer Backup Prevention programs
 - Outreach is primarily conducted through mailings, door to door notifications and project meetings. Staff regularly attend local NRZ and Community Group Meetings as well.
 - View north Hartford projects and status: www.themdc.org
- **Outreach Office : 179 Barbour Street, Hartford**
 - The office is staffed Monday through Friday (M, W, F, 9:00 -1:00, Tu, 1:00-4:00, Th, 1:00-5:00)
 - The public is welcome to stop in for information on projects, schedules, and related activities.
 - Those interested in training and employment are either directed to our Contractor Career Development and Compliance team or to visit our website to view and/or apply for current MDC Job Openings at www.themdc.org



MDC's 2026 Strategy to Scale Small, Minority, Women and Disadvantaged Businesses (SBE, MBE, WBE, DBE)

(Focus: Procurement, Strategy, and Supply Chain)

- **Contractor Certification & Registration Clinics (Ongoing Support)**
 - **Monthly Technical Support:** Clinics with CT DAS, CT APEX Accelerator, and NAWIC.
 - **Bid Readiness:** SAM.gov renewals and S/MBE recertification coaching.
 - **Vendor Eligibility:** Tracked DAS/SAM.gov expirations — 1 confirmed active through 2027, coached 4 through renewal.
- **Growth Phase: Scaling Minority Contractor Capacity**
 - **Partnership Planning:** Reviewed HEDCO proposal for continued contractor training and capacity-building.
 - **Implementation Path:** Developed a Contract Allowance Amendment approach to fund future training and support through BWV/HCP primes.
- **Joint Venture Expansion with Prime Contractors**
 - **Relationship Building:** Used the winter season to strengthen Prime-Sub relationships and re-engage contractors returning for spring work.
 - **Diplomacy & Resolution:** Partnered with Procurement to resolve field and partnership issues — clarifying expectations and implementing corrective measures to set subs up for success.
- **Contractor Standards & Field Training**
 - **Mentorship:** Provided on-site installation support for active BWV and HCP projects.
 - **Quality Control:** Conducted field reviews to ensure uniform work delivery and compliance.

Get Certified. Get Visible. Get Connected.

2026 Hands-On Certification Clinics for Small Business Certification & SAM

System for Award Management (SAM) registration is a requirement for CT Department of Administrative Services (DAS) Small Business Certification.

Join us to review your Certification & SAM applications.
Receive one-on-one assistance from the CT DAS Business Access Team and CT APEX.

Clinics are held on Wednesdays:

- February 18
- March 11
- April 15
- May 20
- June 17
- August 19
- September 16
- October 21
- November 18

Location:

The Metropolitan District (MDC) Training Center
125 Maxim Road
Hartford, CT 06114

Time:

12:00 PM—2:00 PM (lunch is provided)

Pre-Registration is Required:

EMAIL: Kevin Nodwell at:
kevin.nodwell@ct.gov



No Cost to Attend. Space is Limited. Register Today!

MDC's Evolving Partnership: Community Engagement & Talent Pipeline Expansion

(Focus: Outreach, Partners, and Community Events)

- **Key Community & Partner Activities**
 - **GHAAA Weekly Engagement:** Weekly Saturday partnership meetings via Zoom throughout the quarter (Jan–March).
 - **Hartford NRZ Engagement:** Monthly meetings with Blue Hills, Southwest/Behind the Rocks, and MARG (Maple Avenue Revitalization Group).
 - **Pathways Advisory Board:** Continued participation at the Library to align workforce pathways and student career readiness.
- **Community Issue Resolution & Resident Support**
 - **MBE/WBE Expansion:** Promoted and expanded MBE/WBE participation under the Backwater Valve (BWV) and House Connection (HCP) programs.
- **Contractor Matchmaking & Event Planning**
 - **CT Matchmaker:** Participated in the CT Matchmaker Event and pre-event briefings; added new small-business contacts to the MDC outreach list.
 - **MCC DOT Event:** Began planning the MDC-hosted MCC Minority Construction Council DOT Transportation Matchmaking Event — MDC Training Facility reserved for November 6.
 - **Information Distribution:** Used NRZ and partner channels to distribute Try-A-Trade, employment, and contractor-opportunity information.



MDC's Evolving Partnership: Scaling Programs & Building Internal Systems

(Focus: Try-A-Trade 2026 Recruitment, Selection, and Retention)

- **Try-A-Trade 2026 Recruitment**
 - **Strategic Recruitment:** Mapped a 25-school recruitment route to identify high-quality senior candidates.
 - **February Outreach:** Ran Try-A-Trade waves at Windsor HS, East Hartford, Newington HS, HPHS Trade Day, A.I. Prince Tech, Synergy, and Conard HS.
 - **March Outreach:** Conducted promotional lunch waves at Bloomfield HS, Impact Academy, and Howell Cheney Technical HS.
- **Cohort Selection**
 - **Candidate Evaluation:** Completed the 2026 cohort interview and selection process — 13 candidates evaluated across 8 schools.
 - **Schools Engaged:** Synergy, East Hartford, Newington, Hartford Public, Bloomfield, Cheney Tech, Windsor, and Wethersfield.
- **Retention & OIT Support**
 - **OIT Tutoring & Mentoring:** Supported 2 Water Treatment and 2 Wastewater OITs through license-readiness and workplace coaching.
 - **Utility Maintenance Pathway:** Supported 1 UM1 Utility Maintainer hire/placement through career-pathway coaching.
 - **Internal Promotion:** Promotion from the Diversity Department to HR as Training Coordinator — overseeing employee and new-hire training, event support, and upward-mobility pathways.



MDC
The Metropolitan District (MDC)

TRY-A-TRADE PROGRAM

Monday, April 13–Friday, April 17, 2026

The Metropolitan District's (MDC) "Try-A-Trade" program is a unpaid high school learning opportunity which runs the week of spring break. It was created to educate and introduce students to the many career opportunities at the MDC.

CAREER PATHS

- WATER TREATMENT
- WATER POLLUTION CONTROL
- OPERATIONS
- UTILITY SERVICES
- FACILITY MAINTENANCE
- ELECTRICAL/INSTRUMENTATION AND CONTROL

The best way to find out if you like something is to give it a try! Try-A-Trade is a one week hands-on program to do just that! Join us as we explore several different and profitable career paths through hands-on learning! Students will have the opportunity to earn certificates as well as gain knowledge and a better understanding of various career opportunities in the trades and at the MDC.

PROGRAM DETAILS:

Dates: April 13th – 17th, 2026

Time: 8:00 am – 2:30 pm (tentatively)

Location: MDC Training Center, 125 Maxim Road, Hartford

Please complete intake form:

MDC TRY-A-TRADE INTAKE FORM

860.278.7850 x3302 | human-resources@themdc.com | www.themdc.com

MDC's Evolving Partnership: Workforce Development & Career Events

(Focus: Education Partners, Career Fairs, and Career Pathways)

• Education & Workforce Partnerships


- **ECLAC / Ready CT:** Participated in the ECLAC Quarterly Meeting to support Ready CT classroom experiences, mentorship, and employer-readiness planning.
- **HPHS Trade Day:** Delivered MDC/Try-A-Trade presentation to rotating student groups at HPHS Trade Day with ReadyCT (Christopher Venable).
- **EGT Advisory Board:** Attended HPHS Engineering Green Technology Industry Advisory Board meetings (February & March).

• Career Fairs & Recruitment Events

- **Construction Industry Fairs:** Participated in the RAISE THE BAR Career Fair at Parker Memorial (March 10).
- **Middle & High School Fairs:** Annie Fisher Montessori 8th-Grade Career Fair (March 12) and Weaver High School Career Fair (March 21).
- **Spring Schedule:** Compiled the spring career-fair schedule (March 12, April 9, May 7) with Hartford Public Schools.

• Career Pathways & Future Planning

- **Career Pathway Promotion:** Partnered with HPHS and Gateway Community College promoting in-demand MDC careers — Licensed Water Treatment Operators and the AS MET pathway to Instrumentation & Control Technician.
- **MDC-Hosted Job Fair (Planned):** Formulated a plan to host an MDC job fair connecting Try-A-Trade graduates and job seekers with contractors across MDC facilities, CIP, and the Long-Term Integration Plan.



MDC WORK-BASED LEARNING PROGRAM
EXPLORE *Career Opportunities* IN THE
WATER AND WASTEWATER UTILITY INDUSTRY

ABOUT THE PROGRAM
The Metropolitan District's (MDC) Worked-based Learning Program is a paid internship program developed in partnership with various workforce development partners to help build a strong pipeline of knowledgeable workers into the water and wastewater industries.

PROGRAM DESIGN

- Work alongside industry professionals
- On-the-job training in the field
- Educational training opportunities
- Tour different facilities and departments

PROGRAM ELIGIBILITY

- Current high school junior or senior
- Other eligible individuals from partnership groups
- Interest in the water/wastewater industry
- Reliable transportation to and from MDC

WORK-BASED LEARNING PLACEMENT OPTIONS

WATER POLLUTION CONTROL - treats wastewater

WATER TREATMENT - produces and treats drinking water

FIELD OPERATIONS - maintenance and repair of water & sewer assets

UTILITY SERVICES - manages service connections and technical customer response to customers

PLANT MAINTENANCE - maintenance and repairs of plants

PARTICIPANT COMMITMENT

- Earn Minimum \$18.00 per hour
- Up to 14 hours per week (academic year)
- Summer Work Opportunity (up to 20 hours per week)

CURRENT CAREER PATHS

WATER POLLUTION CONTROL
WATER TREATMENT OPERATIONS
FIELD OPERATIONS
UTILITY SERVICES-ENGINEERING
TECHNICIAN, CONSTRUCTION
INSPECTIONS, DRAFTING,
CROSS-CONNECTIONS

OPPORTUNITY

Experience first hand, the many exciting career opportunities and career paths available in the water & wastewater industries.

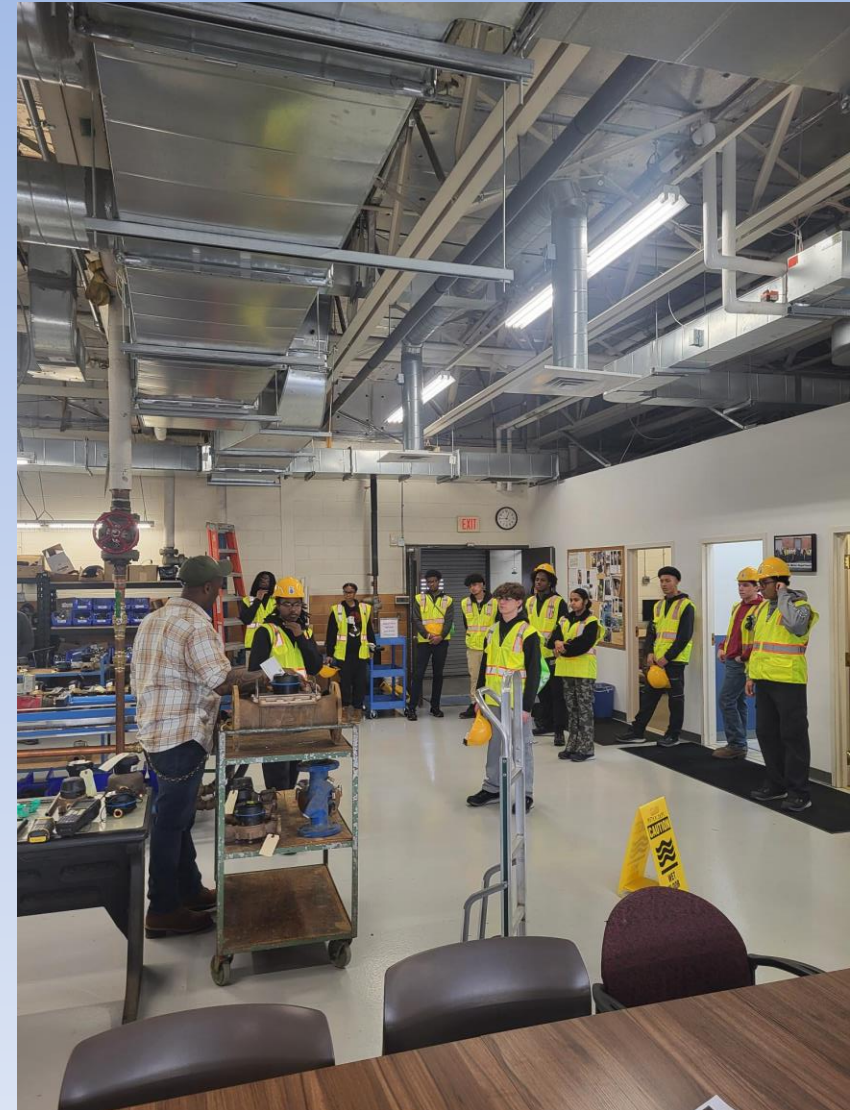
Applications can be sent to:
MDC Attn: Human Resources 555 Main Street
Hartford, CT 06103
EMAIL: human-resources@themdc.com

Questions? Email human-resources@themdc.com or call (860) 278-7850 ext. 3268

MDC's Partnerships: Metrics from Transforming Local Labor Recruitment

(Focus: Local Workforce & Contractor Development in the North End)

- **Workforce Goal:** Meeting **30% Hartford Resident** workforce target.
- **Contractor Hiring & Scaling**
 - **New Hires (Q1 2026):** No new hires this quarter.
 - Total To-Date: **20 Hartford residents** placed in employment.
 - **Business Expansion:** No change this quarter.
 - Total To-Date: **8 employees hired** (includes 4 Hartford residents).
 - **Long-Term Placement:** No change this quarter.
 - Total To-Date: **13 Hartford residents** transitioned into long-term employment.
 - **MBE Scaling:** No change this quarter.
 - Total To-Date: **4 Contractors** awarded work (2 Hartford, 2 Non-Hartford).
- **Student Pipeline & Retention**
 - **Summer WBL:** No new placements this quarter.
 - Total To-Date: **14 students** gained summer employment.
 - **Cohort Status: Zero Turnover** maintained. No new hires Q1 2026; interviewed 2 returning 2024 Try-A-Trade students.
 - Total To-Date: **3 Full-Time employees** hired (2 HPHS, 1 Newington) + 1 internal promotion.



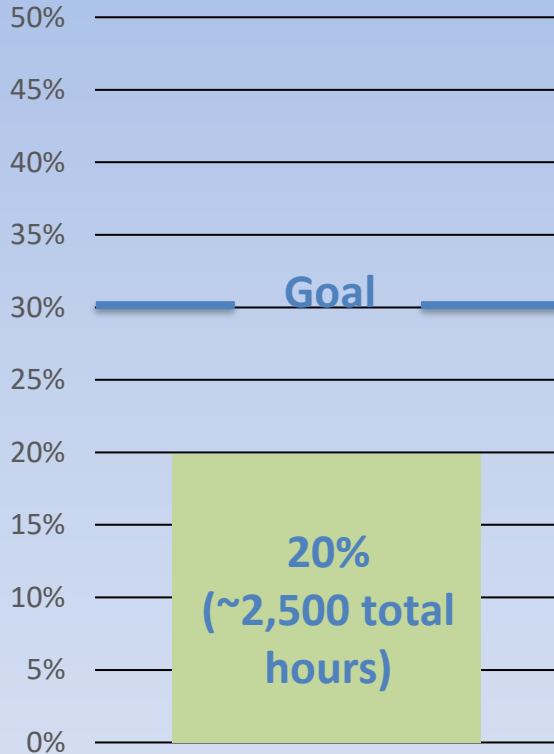
MDC's Partnerships: Metrics from Transforming Local Labor Recruitment Continued....

- **Workforce Development and Educational Partnerships**
 - **Partnership Expansion:** Expanded network to include **Ready CT** and **Pratt & Whitney**, plus **2 MDC Board Seats** on the HPHS Industry Advisory Board (IAB).
 - **Facility Tours:** No new tours this quarter.
 - Total To-Date: **5 Facility Tours** (Lincoln Tech, HPHS 9th Graders, UHart, 24/25 Try-A-Trade Cohorts).
 - **Partnership & Retention:** Continued ECLAC and Ready CT partnership commitment supporting classroom engagement and student career readiness.
 - **Student Outreach (Q1 2026):** Educated students on MDC career paths and promoted Try-A-Trade through new lunch-wave and early-promotion events; attended 3 career fairs this quarter.
 - Total To-Date: **9 career and recruitment events.**
- **Program Assets & Capacity Building**
 - **Recruitment Tool:** Finalized **Try-A-Trade Promotional Video** to showcase program impact.
 - **[Watch Video: Try-A-Trade Promo]** (<https://youtu.be/70VgSzwFuMA>).
 - **HEDCO Training Program:** **6 WBE/MBE contractors** enrolled in HR, finance, marketing, and estimating training tracks.
 - **[Watch Video: HEDCO Training]** (<https://youtu.be/rQ84nWrHhyk>).

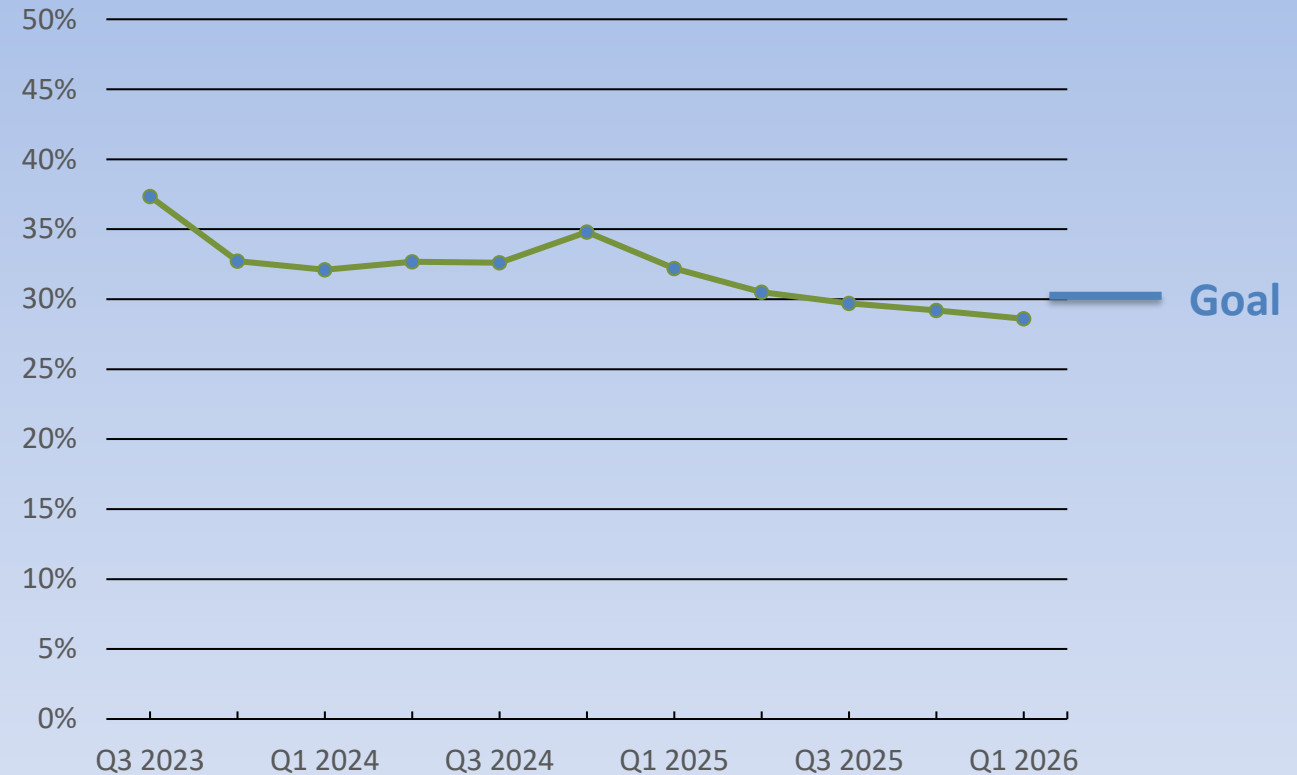


Hartford Labor Status

Hartford Labor Q1 2026



Hartford Labor Program Running Total to Date (~58,400 total hours)*



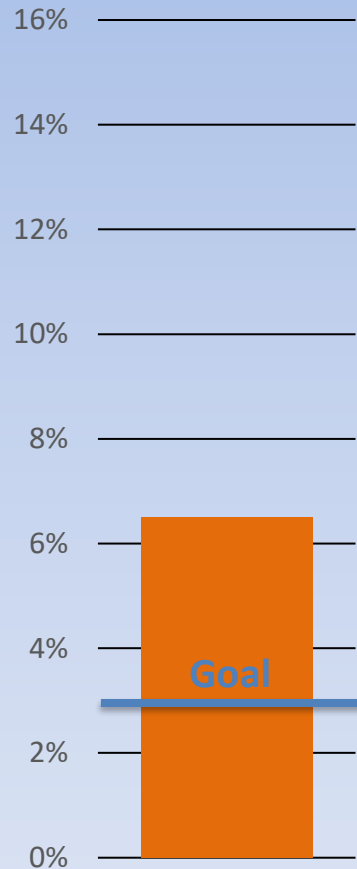
Note

* Statistics are based on all Hartford Consent Order projects started after July 2023 under construction. 30% target based on similar City of Hartford goal on municipal projects. Note that quantities to date since 2023 were recently updated based on updated accounting.

Minority/Women Business Enterprises Status

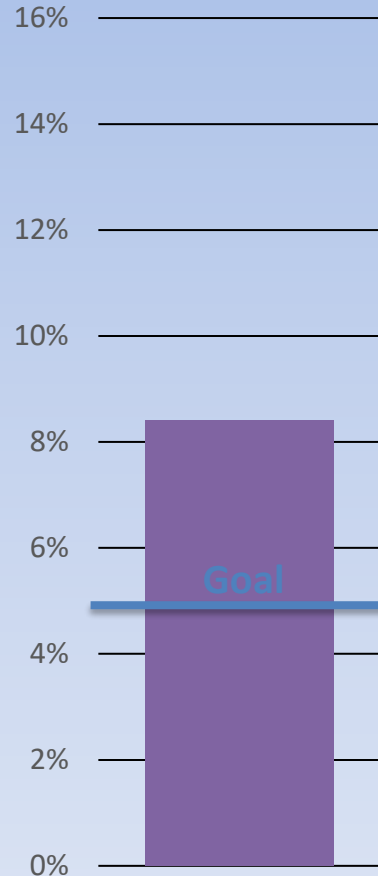
2026 MBE (by \$)

Q1

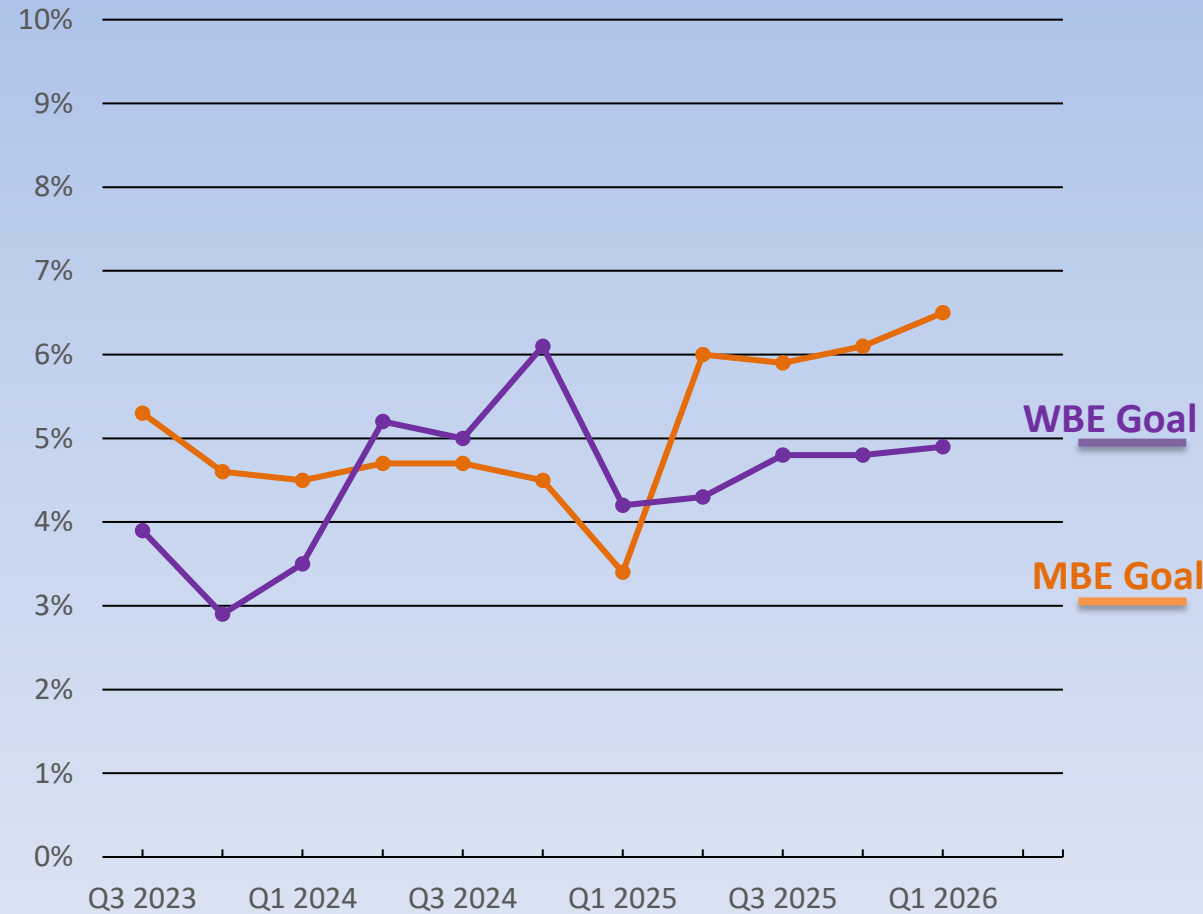


2026 WBE (by \$)

Q1



MBE and WBE Program To Date (by \$)*



Note*: Statistics are based on all Consent Order related projects under construction, beginning in July 2023.

MBE and WBE targets based on CT DEEP Clean Water Fund (CWF) goals

Closing Remarks

- Many ongoing initiatives and projects
- Many ways to **stay informed**
 - Visit - <https://themdc.org/north-hartford-sewer-improvement-projects/>
 - Via your local NRZ
- Quarterly Consent Order Meetings
 - Second Thursday of the months of March, June, September, and December
 - Each meeting will also be virtual
- Comments and Questions

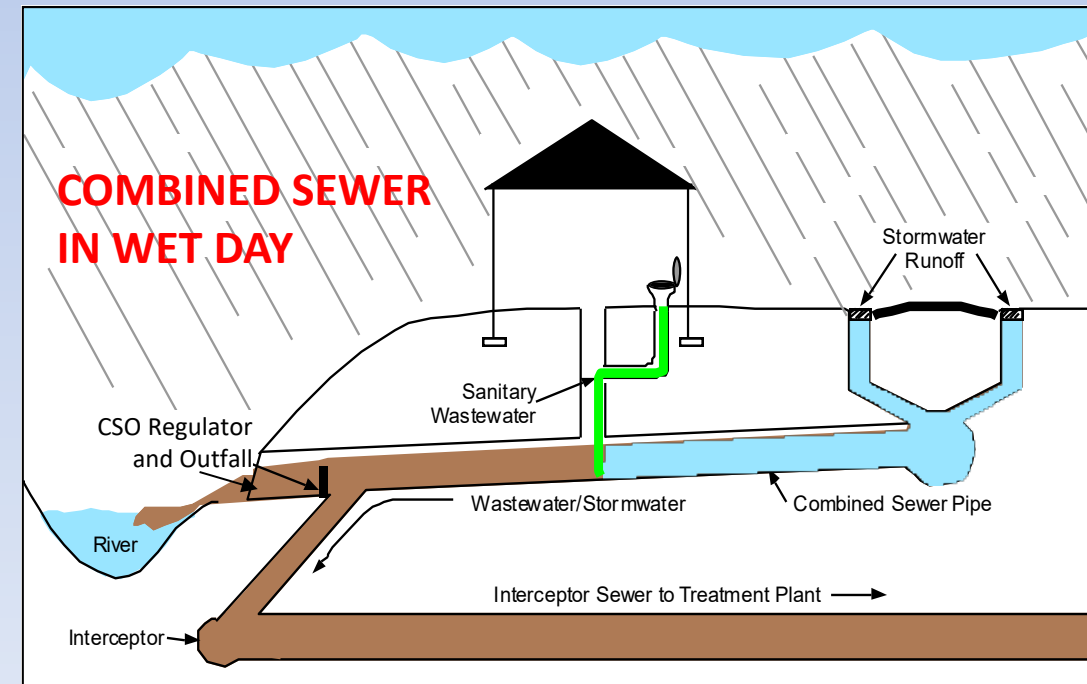
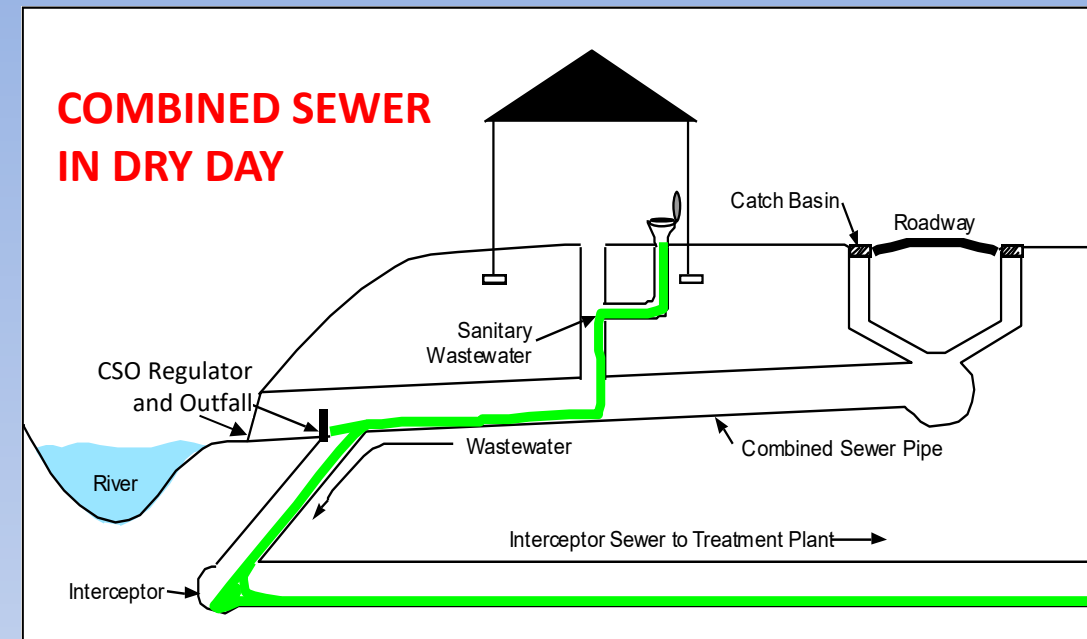
Additional Resources

List of Acronyms

- AFSCME = American Federation of State, County and Municipal Employees
- AHNA = Asylum Hill Neighborhood Association
- BWV = Backwater Valve
- COH = City of Hartford
- CSO = Combined Sewer Overflow
- CT DEEP = Connecticut Department of Energy and Environmental Protection
- CWF = Clean Water Fund
- CWPC = Clean Water Project Charge
- DAS = Department of Administrative Services
- DBE = Disadvantaged Business Enterprise
- EPA = Environmental Protection Agency
- GHAAA = Greater Hartford African American Alliance
- GHFC = Greater Hartford Flood Commission
- IP/CSO LTCP = Integrated Plan/CSO Long-Term Control Plan
- MBE = Minority-Owned Business Enterprise
- MCC = Minority Construction Council
- MG = Million Gallons
- NAWIC = National Association of Women in Construction
- NBPR = North Branch Park River
- NGOs = Non-Government Organizations
- NRZs = Neighborhood Revitalization Zones
- PPID = Private Property Inflow Disconnect
- Q3 = Quarter 3 (ex. period from July 1, 2023 to September 30, 2023)
- RFP = Request for Proposal
- RFQ = Request for Qualifications
- ROW = right-of-way
- SBE = Small Business Enterprise
- SHCST = South Hartford Conveyance & Storage Tunnel
- SSES = Sanitary Sewer Evaluation Survey
- SSO = Sanitary Sewer Overflow
- WBE = Women-Owned Business Enterprise

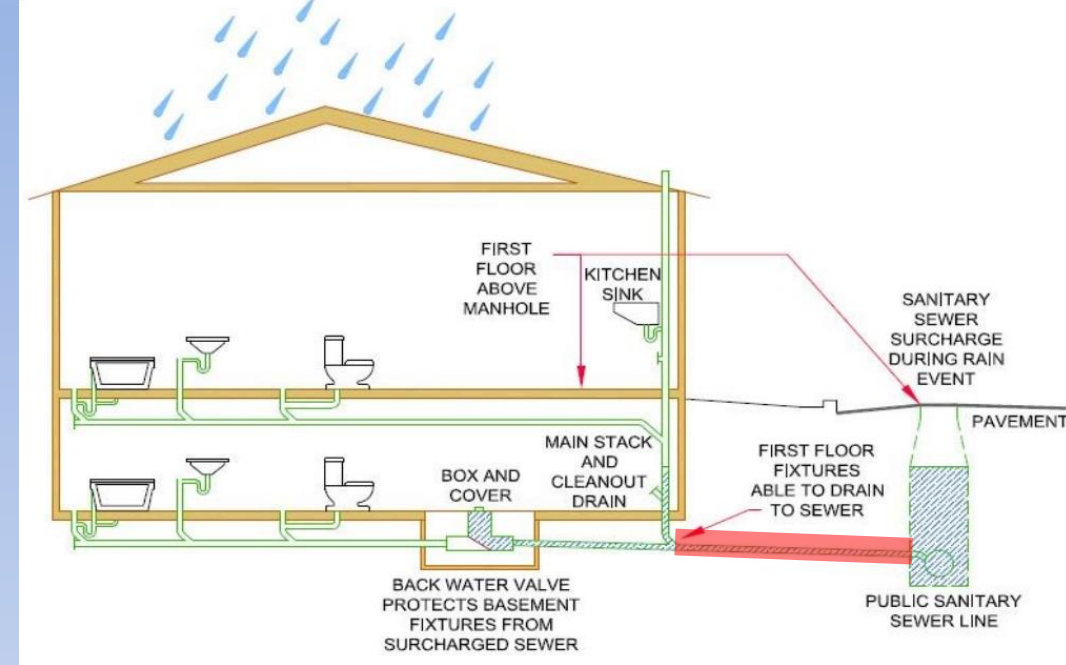
Common Terms & Definitions

- **Separate/sanitary sewer**
 - pipe designed to only convey wastewater
 - how sewers are built now, all member towns except Hartford
- **Storm drain**
 - pipe designed to convey only stormwater
- **Combined sewer**
 - pipe designed to convey **both** sanitary and stormwater (including catch basins)
 - How sewers were built 100 years ago
 - Issues with Combined Sewers:
 - **Dry Day:** No issues, enough capacity for household sewage (toilet, showers, etc)
 - **Wet Day:** Stormwater enters sewer (example: through catch basins). The combined sewer becomes too full, causing overflows (CSOs) into streams/ivers



Common Terms & Definitions

- **Lateral/House Connections**
 - Pipe (shown in red) connecting the wastewater from homes to the District's sewer main
- **Combined Sewer Overflow (CSO)**
 - condition that occurs when wet weather flows in a combined sewer system exceed the treatment capacity at the plant and/or in the pipes, causing it to discharge flow into typically a storm drain or river (via a CSO regulator and outfall)
 - Example: "N-2" and "N-4"
- **Sanitary Sewer Overflow (SSO)**
 - a condition that may occur due to blockage/clog in a pipe, broken infrastructure, or due to significant rainfall



Common Terms & Definitions

- **1-Year Design Storm**
 - The historic event from October 1951 with a 24-hour depth of 2.4 inches and an average recurrence interval (ARI) of 1 year. This design storm has been used to control all CSO regulators except those that discharge to the North Branch Park River or Wethersfield Cove.
- **Typical Year**
 - The typical year evaluated had 42-inches of rain. The selection was agreed to by CT DEEP and followed the approach described by the USEPA's "Combined Sewer Overflows Guidance for Monitoring and Modeling" (USEPA, 1999), which includes analyzing individual storm event return periods, annual precipitation, and simulated CSO volume for each year in the historic record to find a representative typical year.
- **Elimination Storm**
 - Tropical Storm Tammy was adopted for CSO elimination alternatives analysis through correspondence with CT DEEP during the 2012/2014 LTCP Update. The event referred to in the LTCP as Tammy was a combination of the remnants of that storm in combination with Subtropical Depression Twenty-Two. From October 7 to 15, 2005, 13 inches of rain fell at Bradley Airport. The heaviest rain fell on the 8th and the 9th and from the 14th to the 15th, with 5.0 and 5.8 inches falling over respective 24-hour periods

Status of Projects: Key Performance Indicators by Project

Key Performance Indicators	Q1 2026 (January 1 through March 31) District Wide	Q1 2026 (January 1 through March 31) North Hartford Only	Total To Date (since 2019) District Wide	Total To Date (since 2019) North Hartford Only
Storm drains or sanitary sewers installed (feet), via:	404	359	39,170	14,623
On-Call Sewer/Paving Program Coordination	359	359	9,005	3,056
Chadwick & Deerfield Watermain Replacement (2024B-13)	45	-	1,065	-
Other Projects Prior to North Hartford Pilot	-	-	29,100	6,950

Status of Projects: Key Performance Indicators by Project

Key Performance Indicators	Q1 2026 (January 1 through March 31) District Wide	Q1 2026 (January 1 through March 31) North Hartford Only	Total To Date (since 2019) District Wide	Total To Date (since 2019) North Hartford Only
Sewer mains rehabilitated (feet) (miles), via:	7,534 (1.4)	6,289 (1.2)	595,622 (112.8)	125,595 (23.8)
Gully Brook Area Sewer & Lateral Rehabilitation/ Repair (2023B-61)	2,309 (0.44)	2,309 (0.44)	20,153 (3.8)	20,153 (3.8)
NM Area Sewer & Lateral Rehabilitation/ Repair (2023B-62)	3,980 (0.75)	3,980 (0.75)	7,034 (1.3)	7,034 (1.3)
West Hartford SSES Implementation (2024B-19)	1,245 (0.24)	-	83,340 (15.8)	-
On-Call Sewer/Paving Program Coordination	-	-	141,917 (26.9)	16,133 (3.0)
Tower Avenue Area (NM-2/3/4) Sewer Rehabilitation	-	-	9,906 (1.9)	9,906 (1.9)
Sewer Rehabilitation in Bloomfield & NBPR Area (2022B-07)	-	-	5,686 (1.1)	368 (0.07)
Sewer Rehabilitation in Gully Brook Area (2021B-23)	-	-	6,905 (1.3)	-
NBPR Area Sewer and Lateral Rehabilitation/ Repair (2023B-60)	-	-	48,501 (9.2)	48,501 (9.2)
Large Diameter Phase 3A (2023B-04) (Part 1)	-	-	13,180 (2.5)	-
Other Projects Prior to North Hartford Pilot	-	-	259,000 (49)	23,500 (4.5)

Status of Projects: Key Performance Indicators by Project

Key Performance Indicators	Q1 2026 (January 1 through March 31) District Wide	Q1 2026 (January 1 through March 31) North Hartford Only	Total To Date (since 2019) District Wide	Total To Date (since 2019) North Hartford Only
Sewer laterals inspected (# of properties)	657	295	14,904	5,097
On-Call Sewer/Paving Program Coordination	0	0	2,740	516
Tower Avenue Area (NM-2/3/4) Sewer Rehabilitation	0	0	107	107
Sewer Rehabilitation in Gully Brook Area (2021B-23)	0	0	73	73
Sewer Rehabilitation in Bloomfield & NBPR Area (2022B-07)	0	0	482	0
NBPR Area Sewer and Lateral Rehabilitation/ Repair (2023B-60)	102	102	1,413	1,413
Gully Brook Area Sewer & Lateral Rehabilitation/ Repair (2023B-61)	0	0	1,192	1,192
NM Area Sewer & Lateral Rehabilitation/ Repair (2023B-62)	105	105	634	634
West Hartford SSES Implementation (2024B-19)	35	0	2,708	0
Chadwick & Deerfield Watermain Replacement (2024B-13)	38	0	105	46
Backwater Valve/Private Property Inflow Disconnection	377	88	3,650	1,066
Other Projects Prior to North Hartford Pilot	-	-	1,800	50

Status of Projects: Key Performance Indicators by Project

Key Performance Indicators	Q1 2026 (January 1 through March 31) District Wide	Q1 2026 (January 1 through March 31) North Hartford Only	Total To Date (since 2019) District Wide	Total To Date (since 2019) North Hartford Only
Sewer laterals renewed (# of properties) (feet)	288 (10,285')	128 (4,327)	5,851 (188,009')	2,410 (79,802')
On-Call Sewer/Paving Program Coordination	18 (668')	2 (50')	2,487 (78,674')	235 (6,430')
Tower Avenue Area (NM-2/3/4) Sewer Rehabilitation	0	0	423 (11,867')	274 (11,867')
Sewer Rehabilitation in Gully Brook Area (2021B-23)	0	0	40 (1,570')	40 (1,570')
NBPR Area Sewer and Lateral Rehabilitation/ Repair (2023B-60)	87 (3,092')	87 (3,092')	1,495 (49,282')	1,495 (49,282')
Gully Brook Area Sewer & Lateral Rehabilitation/ Repair (2023B-61)	28 (910')	28 (910')	119 (4,530')	119 (4,530')
NM Area Sewer & Lateral Rehabilitation/ Repair (2023B-62)	0	0	31 (731')	31 (731')
West Hartford SSES Implementation (2024B-19)	103 (3,860')	0	655 (23,366')	0
Chadwick & Deerfield Watermain Replacement (2024B-13)			1 (18')	0
House Connection Program	52 (1,755')	11 (275')	590 (15,471')	212 (5,242')
Other Projects Prior to North Hartford Pilot	-	-	10 (500')	4 (150')

Status of Projects: Key Performance Indicators by Project

Key Performance Indicators	Q1 2026 (January 1 through March 31) District Wide	Q1 2026 (January 1 through March 31) North Hartford Only	Total To Date (since 2019) District Wide	Total To Date (since 2019) North Hartford Only
Backwater valve/surcharge protection (# of properties)	114	22	2,435	770
Backwater Valve/Private Property Inflow Disconnection	114	22	1,613	525
Other Projects Prior to North Hartford Pilot	-	-	822	245

Status of Projects: Key Performance Indicators by Project

Key Performance Indicators	Q1 2026 (January 1 through March 31) District Wide	Q1 2026 (January 1 through March 31) North Hartford Only	Total To Date (since 2019) District Wide	Total To Date (since 2019) North Hartford Only
Private property internal disconnects (# of properties)	60	4	1,151	397
Backwater Valve/Private Property Inflow Disconnection	60	4	1,093	365
Other Projects Prior to North Hartford Pilot	-	-	58	32

Status of Projects: Key Performance Indicators by Project

Key Performance Indicators	Q1 2026 (January 1 through March 31) District Wide	Q1 2026 (January 1 through March 31) North Hartford Only	Total To Date (since 2019) District Wide	Total To Date (since 2019) North Hartford Only
Sewer or storm laterals installed via separation (# of properties)	4	4	151	151
On-Call Sewer/Paving Program Coordination	4	4	151	151
Other Projects Prior to North Hartford Pilot	-	-	0	0

Status of Projects: Key Performance Indicators by Project

Key Performance Indicators	Q1 2026 (January 1 through March 31) District Wide	Q1 2026 (January 1 through March 31) North Hartford Only	Total To Date (since 2019) District Wide	Total To Date (since 2019) North Hartford Only
Private property separation completed (# of properties)	0	0	77	77
Backwater Valve/Private Property Inflow Disconnection	0	0	77	77
Other Projects Prior to North Hartford Pilot	-	-	0	0