



Integrated Plan Implementation Quarterly & Annual Report

Q4 2025:

October 1 to December 31, 2025

and

2025 Annual:

January 1 through December 31, 2025

March 12, 2026



Meeting Agenda

- Welcoming Remarks
- Introductions
- Update on MDC's Integrated Plan, with current focus on North Hartford (See Presentation Outline, Slide 3)
 - Quarterly Report from October 1 through December 31, 2025 (Q4 2025) and Annual Report of 2025 (January 1, 2025 to December 31, 2025)
 - An update on projects completed and under construction
 - A schedule for projects under construction or yet to start construction
 - A status of use of minority and disadvantaged business enterprises, including efforts and success at recruiting labor and contractors from the area where projects are or will be occurring
 - Next Quarterly Report Meeting – **June 11, 2026**; covering period of January 1, 2026 – March 31, 2026 (Q1 2026)
- Public Comments and Questions

Presentation Outline

- Background on focus area (North Hartford)
- Quarterly and Annual Consent Order (CO) reporting requirements
- Overview of CO projects in:
 - North Hartford
 - Hartford (outside of North Hartford)
 - Outside Hartford
- Update on key performance indicators
- MDC's recruiting efforts for Small, Minority, Women and Disadvantaged Businesses (SBE, MBE, WBE, DBE) and Local Labor
- Closing remarks

The North Hartford Area

MDC listened to the North Hartford Community and responded with an altered program that provides immediate community benefit



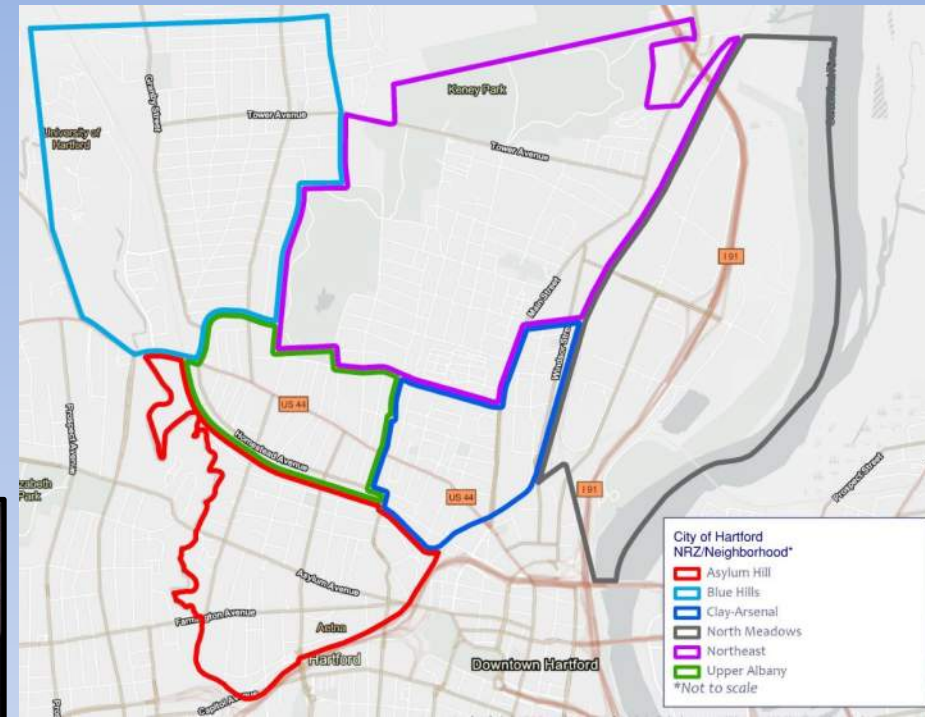
Lateral Repair
(Project: Sewer & House
Connection Rehabilitation
in Gully Brook Area)



Lateral Repair
(Project: Sewer & House
Connection Rehabilitation in
Gully Brook Area)



Restoration
(Project: Sewer & House
Connection Rehabilitation in
North Meadows Area)



State of Connecticut
Ned Lamont, Governor
Department of Energy and Environmental Protection
Katie S. Dykes, Commissioner

Gully Brook Area Sewer & Lateral Rehabilitation/Repair

Environmental Protection for The Metropolitan District

Clean Water Project
the choice is clear

MDC

\$20,373,770.00 Contract Total
\$10,177,885.00 State & Federal Grant
\$9,895,624.35 State & Federal Loan
\$300,260.65 Local Share

From the
Connecticut DEEP Clean Water Fund

Consent Order Modification Reporting Requirements

Quarterly Reporting Required under Consent Order Modification

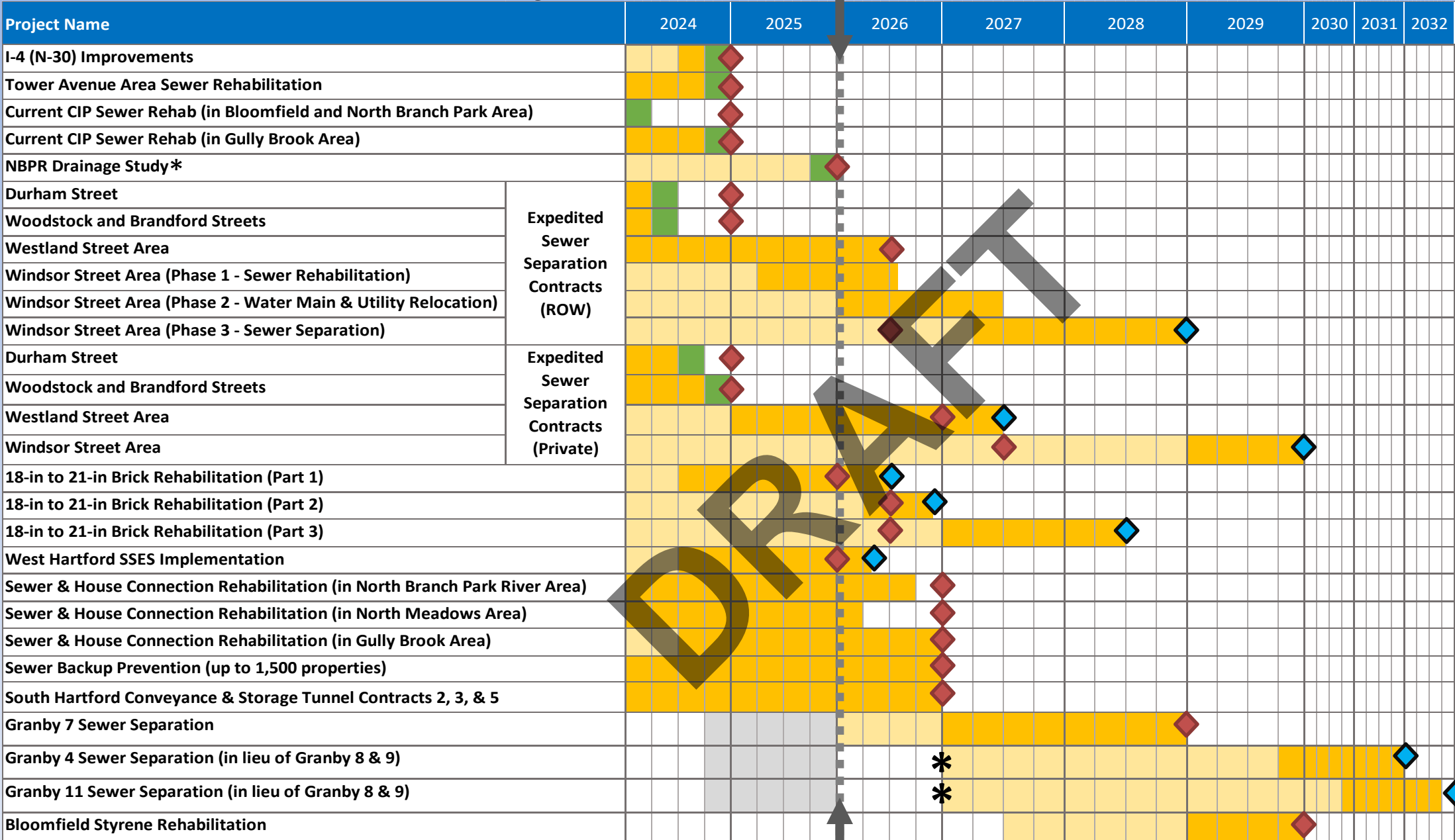
- 1) An update on projects completed and under construction
- 2) A schedule for projects under construction or yet to start construction
- 3) A status of use of minority and disadvantaged business enterprises, including efforts and success at recruiting labor and contractors from the area where projects are or will be occurring
- 4) Other items as requested by Commissioner
 - *None received this quarter*
- 5) **Draft Report posted to MDC website 30 days prior to meeting, with comments from CT DEEP and ICA incorporated as needed**

Other Items Voluntarily Included by the MDC

- MDC committed to 30% Hartford based workforce for North Hartford work associated with Consent Order modification
 - 30% based on similar City of Hartford goal on municipal projects

Consent Order Projects & Timeline

*To view bids, please visit: <https://themdc.org/ebid>



Preliminary Design Final Design Construction Completed

Consent Order Deadline

* Partial Draft submitted in 2024

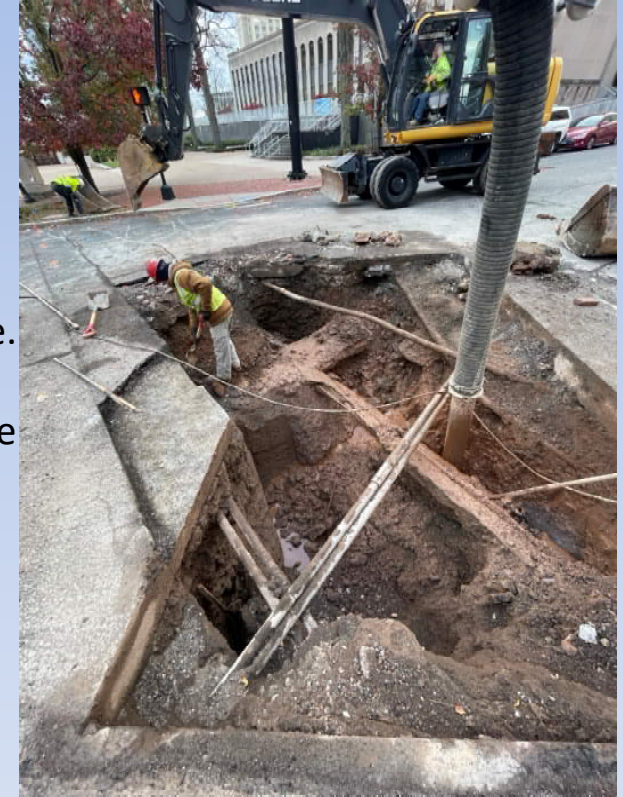
Consent Order Deadline (pending DEEP approval)

* Assumed start date (contingent on DEEP approval)

Consent Order Project Schedule Update

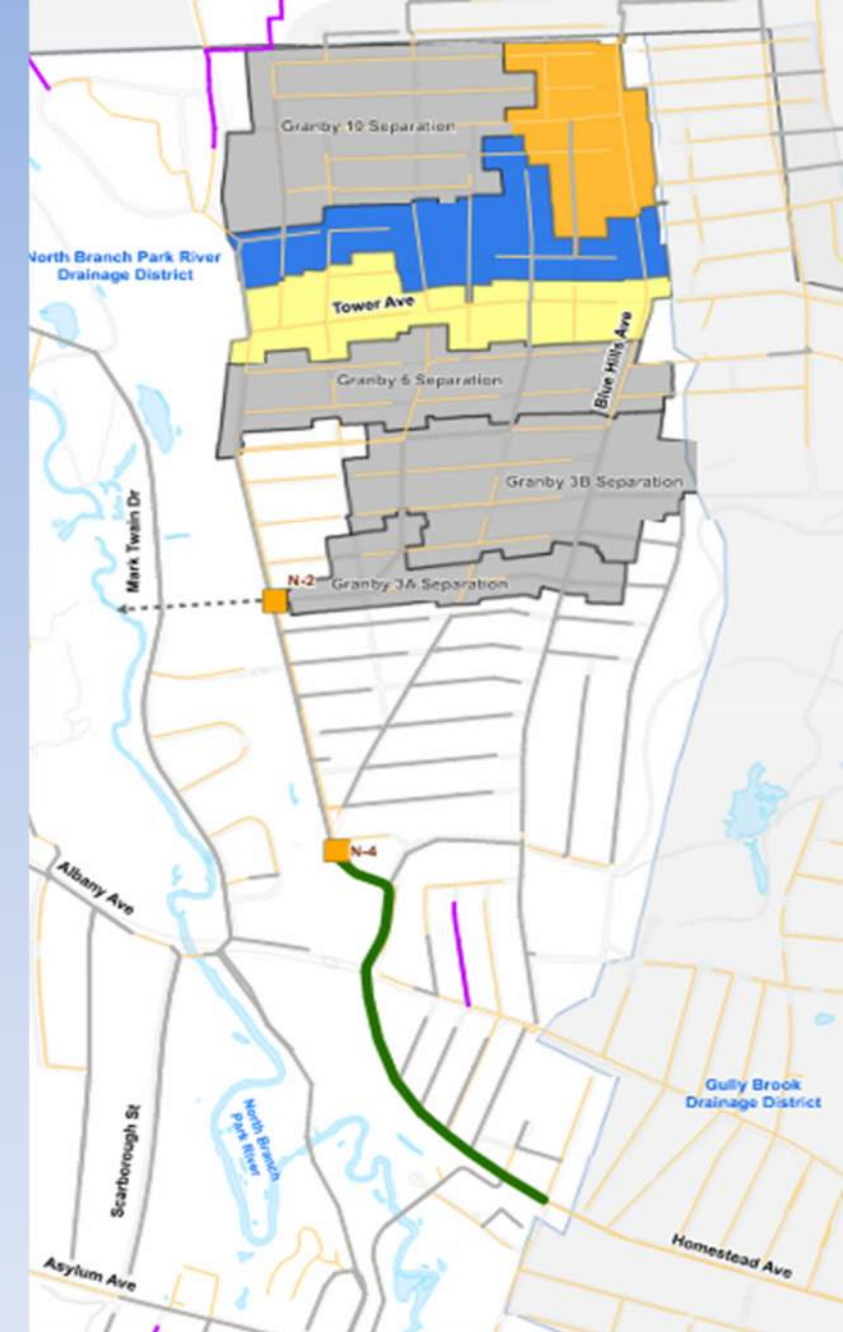
MDC Working with CT DEEP on Consent Order (CO) Modifications (request submitted to CT DEEP on 12/2/2025)

- West Hartford SSES (WHSSSES)
 - Significant increase in quantity of excavation repairs (in advance of lining)
 - Approximately 92% of project expected to be completed by 12/31/25 CO Milestone
 - Requested modified CO completion date of 4/30/26
- 18"-21" Brick Sewer Rehabilitation
 - Part 1: Significant repairs and utility conflicts identified in Market Street/Central ROW Area (Hartford). Approximately 90% of project expected to be completed by 12/31/25 CO Milestone. Requested modified CO completion date of 6/30/26.
 - Part 2: Project advertised on 12/9/25. Requested modified CO completion date of 11/1/26 due to anticipated delayed start due to winter weather.
 - Part 3: Project design to begin in January 2026, with design completion in January 2027. Requested modified CO completion date from 7/1/26 to 7/1/28 due to unknowns associated with utility conflicts and potential required utility relocations.
- Windsor Street Sewer Separation
 - Phase 1 (Sewer Rehabilitation): Construction expected to be completed by July 2026. There is no CO milestone date for this specific phase.
 - Phase 2 (Water Main Relocation): Project expected to be advertised in early 2026, with construction complete in mid 2027. There is no CO milestone date for this specific phase.
 - Phase 3 (Sewer Separation – Public ROW): Construction expected to begin in spring 2027 and completed by end of 2028. Requested modified CO completion date from 7/1/26 to 12/31/28.
- Granby Sewer Separation Phasing (See subsequent Slides)



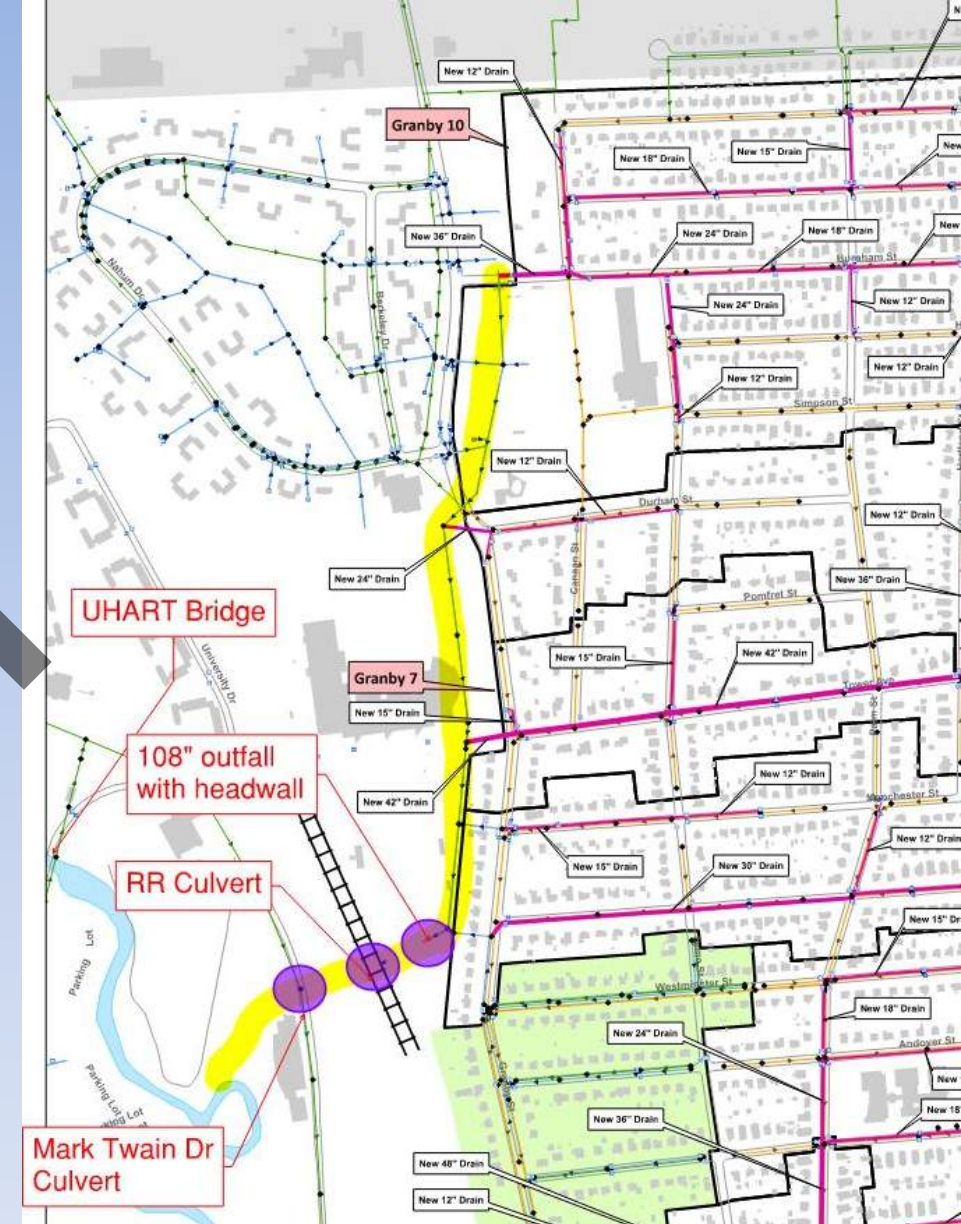
Consent Order Project Schedule Update: Granby Separation

- 2023 Modified Consent Order requires elimination of CSOs to the North Branch Park River by December 31, 2043
- 2018 CSO LTCP / Integrated Plan recommended achieving elimination goal via sewer separation and upsizing downstream Homestead Avenue Interceptor
- Phase 1 Consent Order projects was Granby 7 (yellow), Granby 8 (blue), and Granby 9 (orange) separated to the existing City owned Granby Street Conduit and existing outfall (no new outfall required to be built)
- Initial step towards this goal was the joint NBPR Drainage Study between MDC and City of Hartford



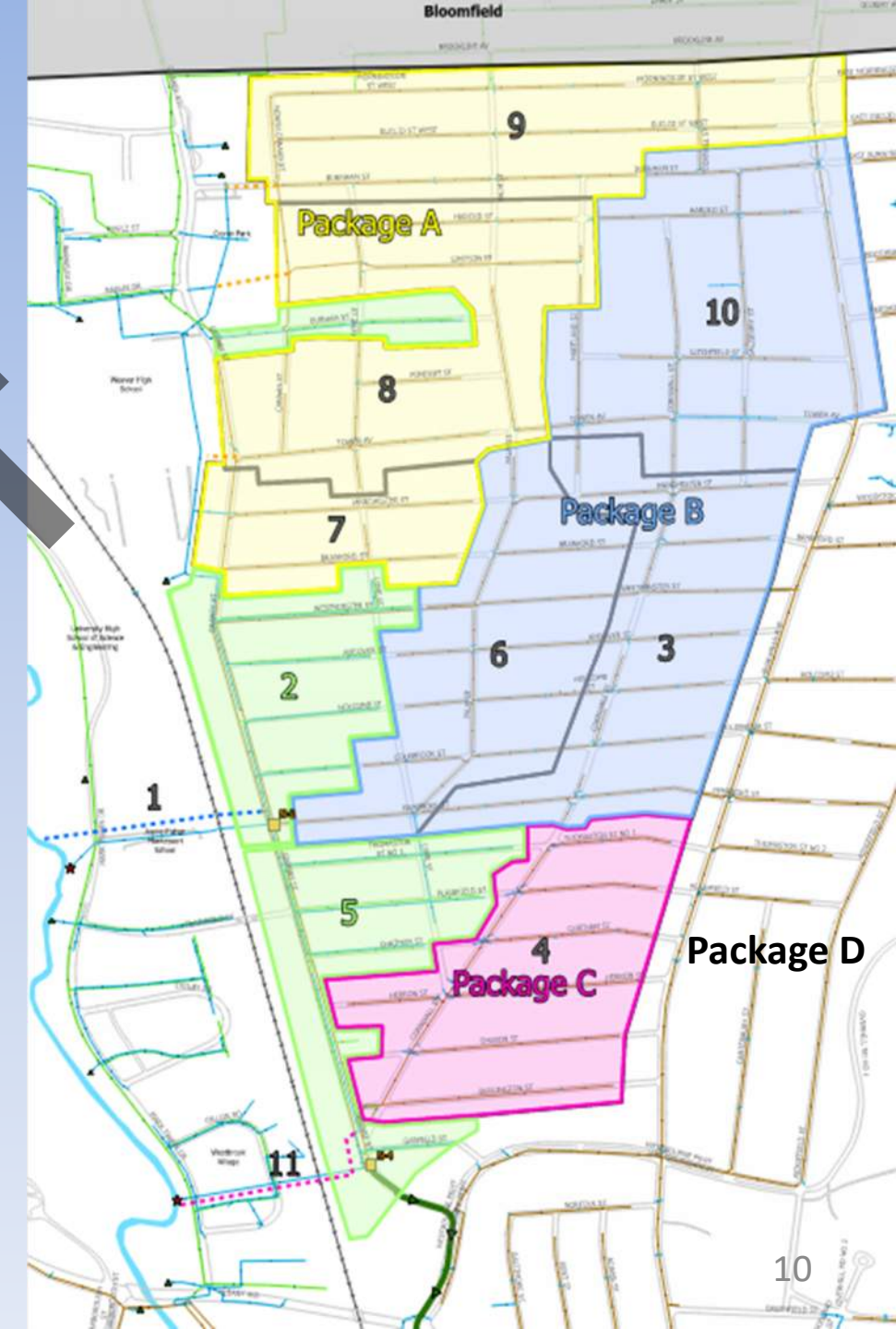
Consent Order Project Schedule Update: Granby Separation – Key Findings

- Field investigations identified clearing and ongoing maintenance needed prior to sewer separation to provide full capacity in existing 108" Granby Street conduit



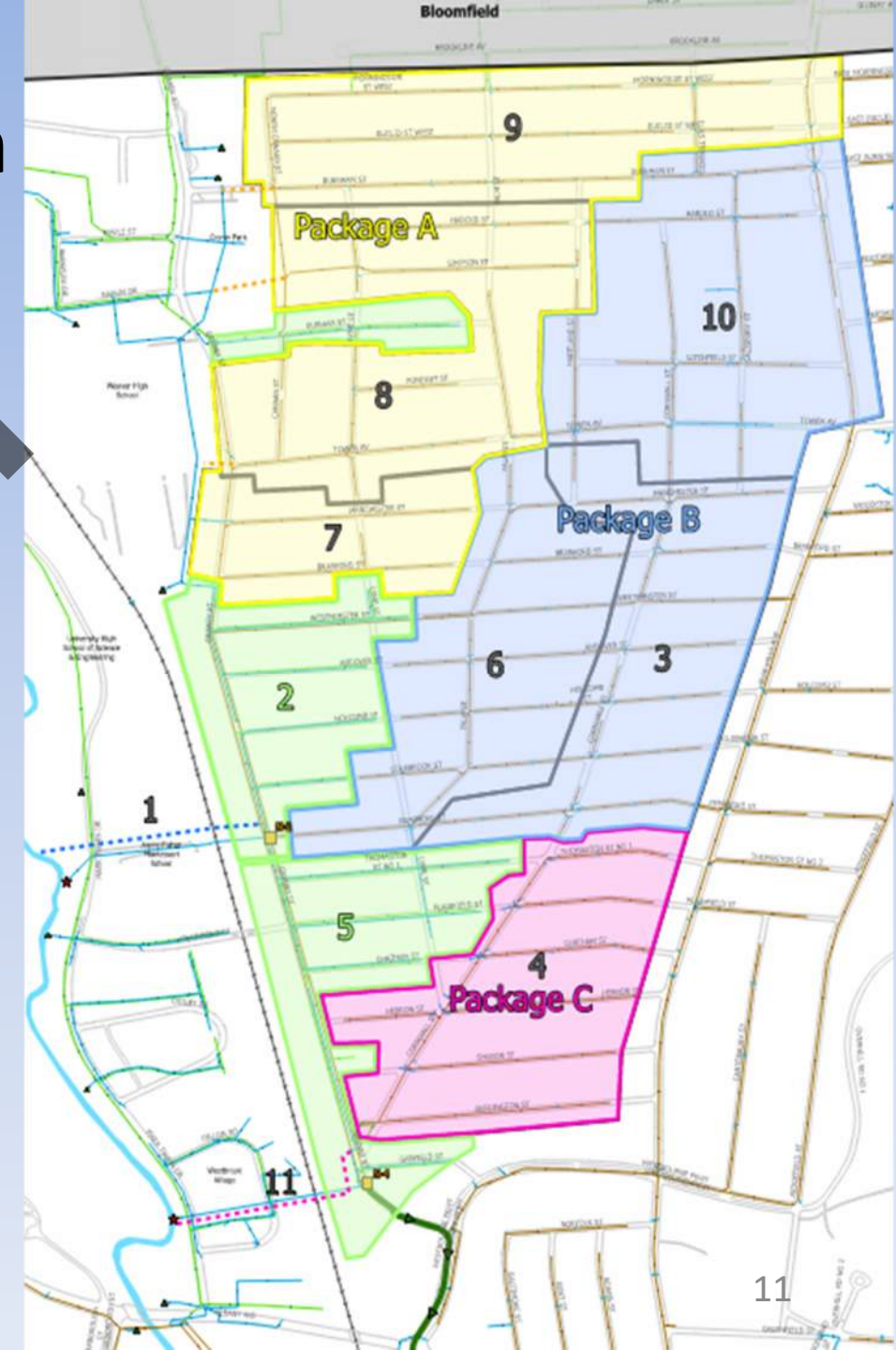
Consent Order Project Schedule Update: Granby Separation – Separation Options

- NBPR Area Drainage Study:
 - Granby Area broken into three package areas, each with multiple proposed construction contracts
 - Final draft of memo with conceptual design plan and profile drawings submitted July 31, 2025
- Delay of Package A (Granby 7, 8, and 9) would allow City more time to address the Granby Street Conduit and unnamed stream by pushing proposed sewer separation to Phase 2 in 2030s. CO Modification required.
- Considered Package B
 - Extremely challenging project. Further study needed.
- Proceed with Package C (Granby 4 & 11).
 - CO Modification required prior to initiating design



Consent Order Project Schedule Update: Granby Separation – Recommended Plan

- Proceed with Package C (Granby 4 and 11)
 - New 72" outfall through Westbrook Village (Granby 11)
 - Sewer separation of Cornwall (Granby to Thomaston) and adjacent streets (Granby 4)
 - Help abate flooding at intersection of Granby and Cornwall.
- Proceed with Granby 7:
 - Design proceeding in concurrence with COH working on plan for 108" conduit
 - Project can proceed in expedited manner compared to Package C.
 - Maintains progress in NBPR Area.
 - Completion in accordance with current CO Milestone date of 12/31/28
- Requires CO modifications:
 - Remove Granby 8 & 9 from CO
 - Add Granby 4 & 11 to CO:
 - Granby 4 CO Milestone Date = 12/31/31
 - Granby 11 CO Milestone Date = 12/31/32



Expedited Sewer Separation Program – Example Construction Progress



New Storm Drain Installation
(Project: Westland Street Area Expedited Sewer Separation)

Tower Avenue Area Sewer Rehabilitation Project



Project Overview

The scope of the project includes lining of main line sewers and sewer house connection point repairs, rehabilitation of sewer manholes and reconnection of catch basins to a storm system. Sewer lining was performed to help remove infiltration (groundwater that seeps pipe through cracks or holes) and improve the structural integrity of the pipe and renew remaining life. It is a "no-dig" type of construction thereby minimizing the impact to property owners and residents. The project included 359 properties and was substantially completed December 2024 as part of the MDC's Integrated Plan with CT DEEP.

Project Outreach

Project outreach by MDC staff and contractors was key to keeping residents informed throughout the construction process for both public right of way and private property improvements. This constant communication was important for the construction improvements but also the restoration of the sidewalks, lawns and tree planting.


\$6.9M project cost
359 properties
39% of workforce hours were Hartford residents

Work Completed

- 1.8 miles of sewer main lined
- 300 sewer laterals/private house connections lined (2 miles)
- 58 sewer point repairs made
- 71 manholes lined



Woodstock and Branford Sewer Separation Project



Project Overview

The Woodstock and Branford Streets sewer separation project involved several key improvements, including the lining of sewer main lines, sewer laterals, and manholes. Additionally, a dedicated storm drain was installed, and new storm laterals were connected, with permissions granted by property owners, to convey private property storm related flow directly into the storm main. The project included 72 properties and was substantially completed in fall of 2024 as part of the MDC's Integrated Plan with CT DEEP, helping achieve environmental regulatory goals while providing a community benefit.

Private Property Work


Sewer Backup Prevention: Installation of backwater valves, check valves, and sump pumps.

Sewer Infiltration Inflow Separation: Removal of infiltration via lateral lining and removal of inflow via sewer separation such as directing gutters, yard drains and foundation drains to newly constructed storm drains.

Project Outreach

Project outreach by MDC staff and contractors was key to keeping residents informed throughout the construction process for both public right of way and private property improvements. This constant communication was important not just for the construction improvements but also the restoration of the road, sidewalks, lawns and tree planting.

\$1.7M in sewer improvements
\$1.4M additional water main improvements
43% of workforce hours were Hartford residents



Work Completed

- 2,060 feet of main line sewer lined
- 67 sewer lateral private house connections lined
- 321 feet of main line storm installed
- 2,840 feet of new water main installed
- 72 storm drain stubs installed
- 85 new water services installed
- 42 basement assessments completed
- 36 basement protection improvements completed
- 35 private property storm laterals installed



Expedited Sewer Separation Program - Example Construction Progress Photos



Project: Woodstock and Branford Streets Expedited Sewer Separation

Prior to improvements: Roof leader from gutters enters basement and connects to sewer

After improvements: Roof leader from gutters diverted to new storm lateral and new sump pump to pump internal/foundation drains to new storm lateral



Project: Woodstock and Branford Streets Expedited Sewer Separation

Example of new storm lateral installed for roof leaders and sump pump connection

Consent Order Projects: NRZ Impact and CSO Reduction

Project Name		Neighborhood Revitalization Zone and/or Neighborhood	1 Yr CSO Reduction (MG)	Typical Year CSO Reduction (MG)
Current CIP Sewer Rehab (in Bloomfield and North Branch Park Area)		Blue Hills, Clay Arsenal, South Downtown, South Behind the Rocks	0.2	2.4
NBPR Drainage Study		Blue Hills, West End, Asylum Hill	*	*
Sewer & House Connection Rehabilitation (in North Branch Park River Area)		Blue Hills	0.9	11.5
Granby 7 Sewer Separation		Blue Hills	0.4	3.8
Granby 8 Sewer Separation		Blue Hills	0.3	3.4
Granby 9 Sewer Separation		Blue Hills	0.4	3.6
Durham Street	Expedited Sewer Separation Contracts (ROW)	Blue Hills	0.1	1.2
Woodstock and Brandford Streets		Blue Hills	0.1	1.4
Westland Street Area		Northeast	0.4***	4.5***
Windsor Street Area		North Meadows	1.1	14.3
Expedited Sewer Separation Contracts (Private Property Work)		Blue Hills, Northeast, North Meadows	**	**
Sewer & House Connection Rehabilitation (in Gully Brook Area)		Northeast	0.9	11.0
Tower Avenue Area Sewer Rehabilitation		Northeast	0.2	3.0
Sewer & House Connection Rehabilitation (in North Meadows Area)		North Meadows	1.0	28.4
Current CIP Sewer Rehab (in Gully Brook Area)		Asylum Hill, Clay Arsenal, South Behind the Rocks	1.3	10.0
18-in to 21-in Brick Rehabilitation (Part 1, Part 2, and Part 3)		Asylum Hill, Clay Arsenal, South End, Marg	0.8	7.0
I-4 (N-30) Improvements		West End	<0.1	<0.1
Sewer Backup Prevention (up to 1,500 properties)		All North Hartford NRZs/Neighborhoods	**	**
South Hartford Conveyance & Storage Tunnel Contracts 2, 3, & 5		South End, Marg, South Behind the Rocks	3.8	21.9
West Hartford SSES Implementation		N/A	0.2	1.2
Bloomfield Styrene Rehabilitation		N/A	<0.1	<0.1

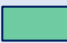
*CSO Reductions for the NBPR Drainage Study included in individual Granby Separation Contracts

** CSO Reductions associated with Private Property Improvements included in associated ROW project reductions

*** Values were updated based on revised runs to include additional separation

**COMPLETED REDUCTION
TO DATE**

1.9 MG (15%) 18.0 MG (14%)

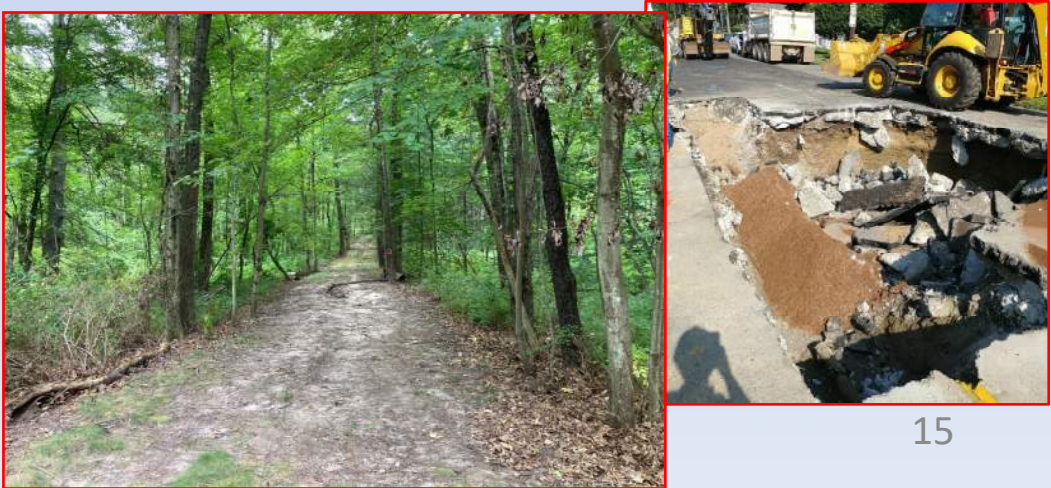
 Completed

Additional Sewer Improvement Projects

Non-Consent Order (2019 through Q4 2025)

- Clearing Sewer Easements on Private Property
 - Completed = Bloomfield, Rocky Hill, East Hartford, Windsor, Newington
 - In progress = Wethersfield
 - West Hartford and Hartford future 2026 -2027 work
- Easement Sewer Rehabilitation
 - Bloomfield Phase 1 completed, subsequent phases in design
 - Other Member Towns to be evaluated/scheduled
- On-Call Sewer Rehabilitation/Repair
 - 257,342 feet sewer main rehabilitated from 2019 to 2024; 33,213 feet of sewer main in 2025
 - Sewer main and laterals rehabilitated in Member Towns
 - In 2025 Q4: work performed in East Hartford, Hartford, Newington, West Hartford, and Windsor
 - Asset management/paving program coordination

Town	Easement Clearing Length (feet)
Bloomfield	98,000 (completed)
Rocky Hill	59,100 (completed)
East Hartford	66,200 (completed)
Windsor	132,300 (completed)
Newington	51,300 (completed)
Wethersfield	59,200 (in progress)
Hartford	19,000 (2026-2027)
West Hartford	54,300 (2026-2027)
Total (feet)	539,400
Total (miles)	102



North Hartford Project Overall Status

PROJECT STATUS

Preliminary Design

Final Design

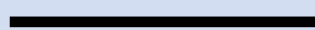
Construction

Completed

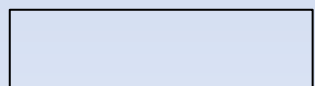
PROJECT TYPE



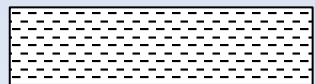
Sewer Separation



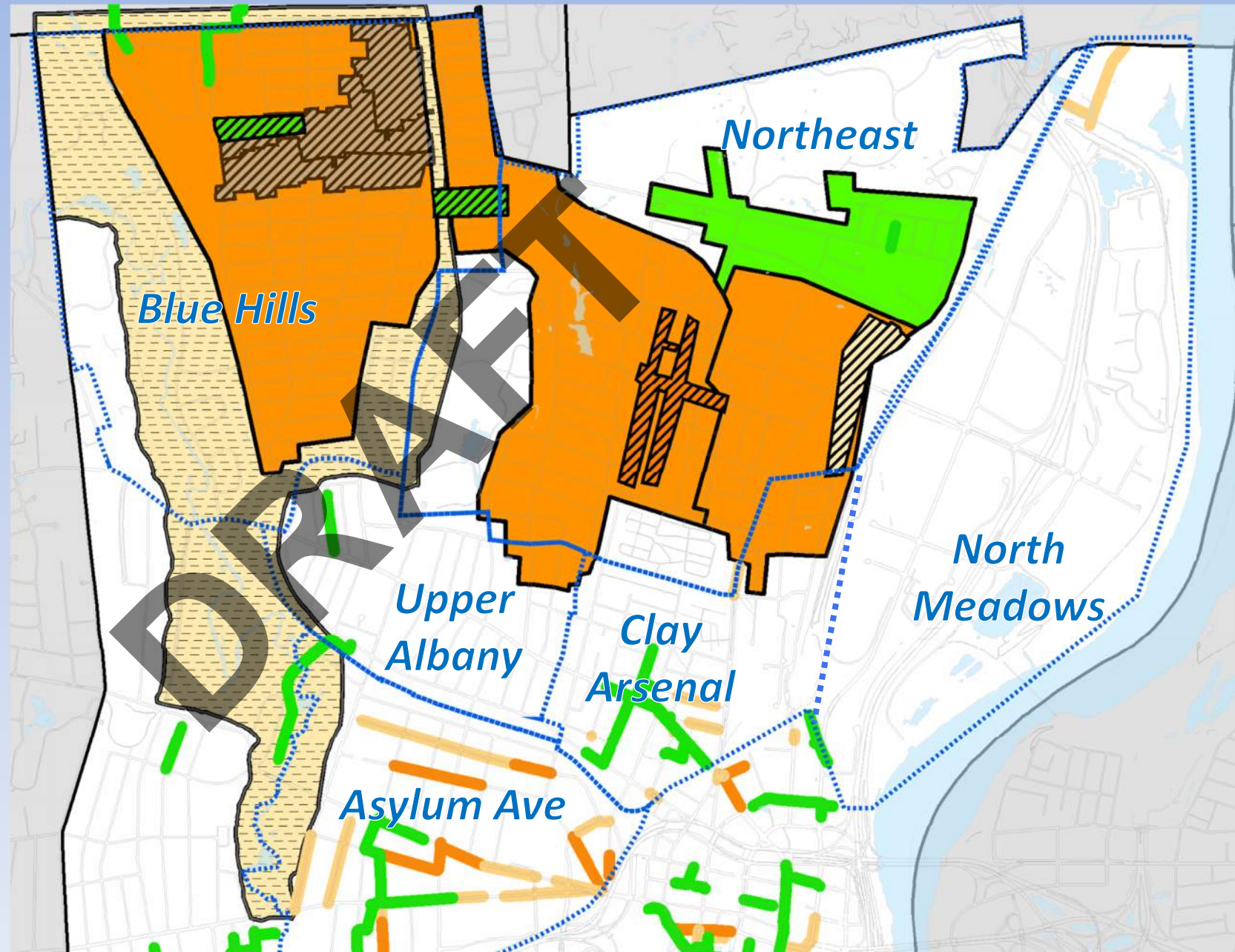
Sewermain Rehabilitation



Sewermain & Lateral
Rehabilitation



Drainage Study



Consent Order Projects (as of 12/31/25): North Hartford

Sewer & House Connection Rehabilitation (in North Branch Park River Area):

Rehabilitation of sewer mains and house connections upstream of CSOs N-2 and N-4

Granby 7/8/9 Sewer Separation:
Sewer separation with new storm drains and private property disconnections (final location based on North Branch Park River Study)

Tower Avenue Area Sewer Rehabilitation:

Rehabilitation of sewer mains and house connections upstream of CSOs NM-2, NM-3, and NM-4

Expedited Sewer Separation Contracts (ROW):

Construction of storm drains in streets
(Additional separation added per MDC review)

Sewer & House Connection Rehabilitation (in North Meadows Area)

Rehabilitation of sewer mains and house connections upstream of CSOs NM-5, NM-6, and NM-7

Expedited Sewer Separation Contracts (Private):

Private property storm separation (to follow ROW Separation Contracts)

North Branch Park River Drainage Study:

Evaluating the North Branch Park River and surrounding sewer and drainage infrastructure in support of future river improvements and sewer separation

Sewer & House Connection Rehabilitation (in Gully Brook Area):

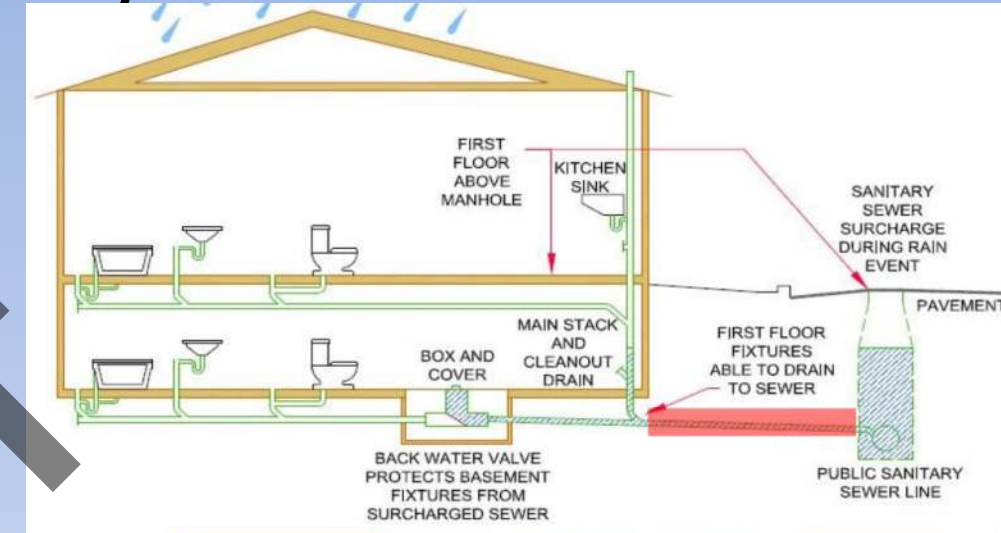
Rehabilitation of sewer mains and house connections upstream of CSO G-13W

Legend:
Preliminary Design
Final Design
Construction
Completed

Consent Order Projects: Private Property Benefit

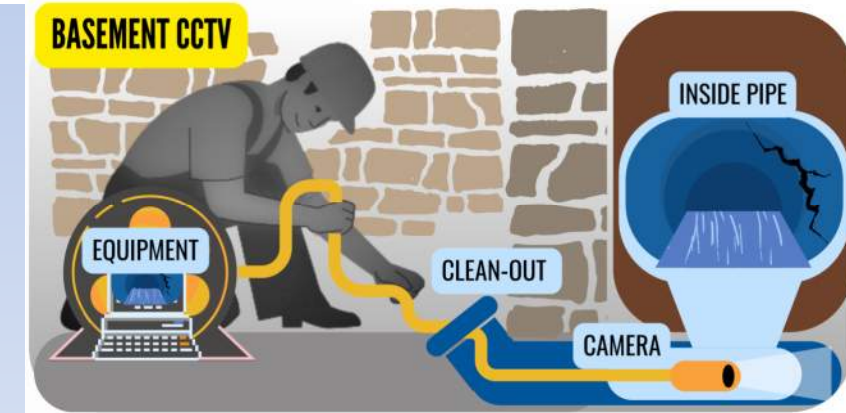
Sewer Backup Prevention Program (“Backwater Valve Program”)

- Separates homes’ foundation drains (via installing sump pumps) and gutters from the sewer system, reducing surcharging during wet weather
- Install backwater valves & sump pumps, etc. to prevent basement backups, **District-wide; at no cost** to property owner.
- \$12.2 million (up to 1,500 homes) for North Hartford properties (Consent Order project)
- <https://themdc.org/utility-services/backwater-valve-program/>
- To **schedule a free assessment** of your property, contact MDC Utility Services at **(860) 278-7850, ext. 3123**



Sewer House Connection Program – voluntarily included by MDC

- MDC Board initiative to provide same benefit **District-wide** that was being offered to North Hartford residents
- Emergency and non-emergency maintenance and inspection services **at no cost** to the property owner
- Provides funding for renewal of the house connection, if needed
- <https://themdc.org/utility-services/sewer-house-connection-program/>



Contractors for both programs are anticipated to be all SBE (Small Business Enterprise)

Example Sewer Backup Prevention Program Improvements



Prior to improvements:

Washing machine drain line and old BWV pit with no protection

- Previous washing line
- New washing machine line protected by check valve
- New cleanout
- Previous BWV pit
- New sump pump in old BWV pit



After improvements:

Check valve installed to protect washing machine; new cleanout installed; new sump pump to replace the old BWV pit

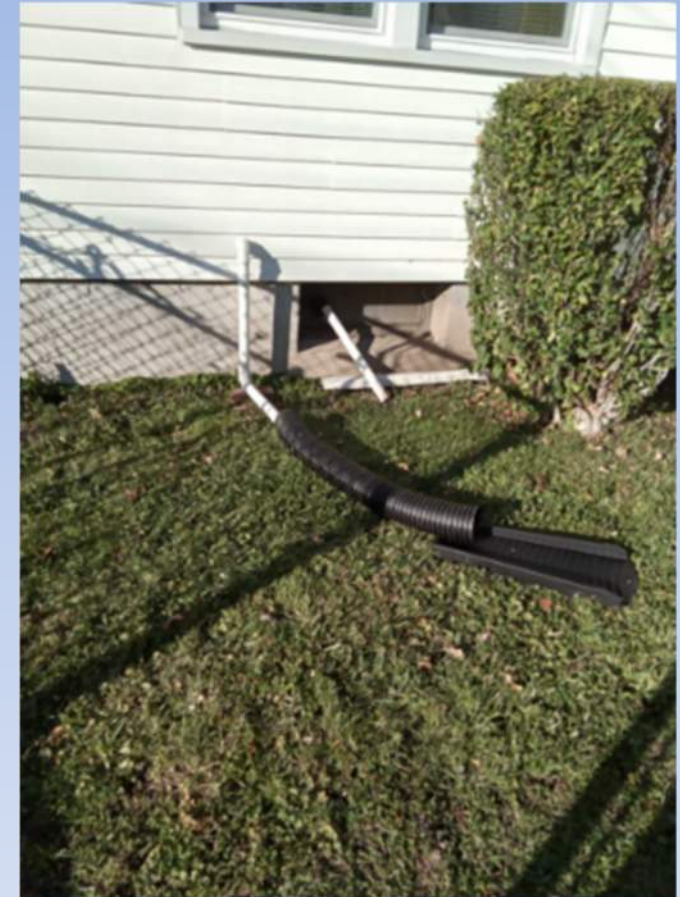
Example Sewer Backup Prevention Program Improvements



New double bay plastic sink and drain piping (new check valve also installed not in photo)



New sump pump (with battery backup) and new Backwater Valve (BWV) inside irrigation style box



Sump pump discharge to lawn

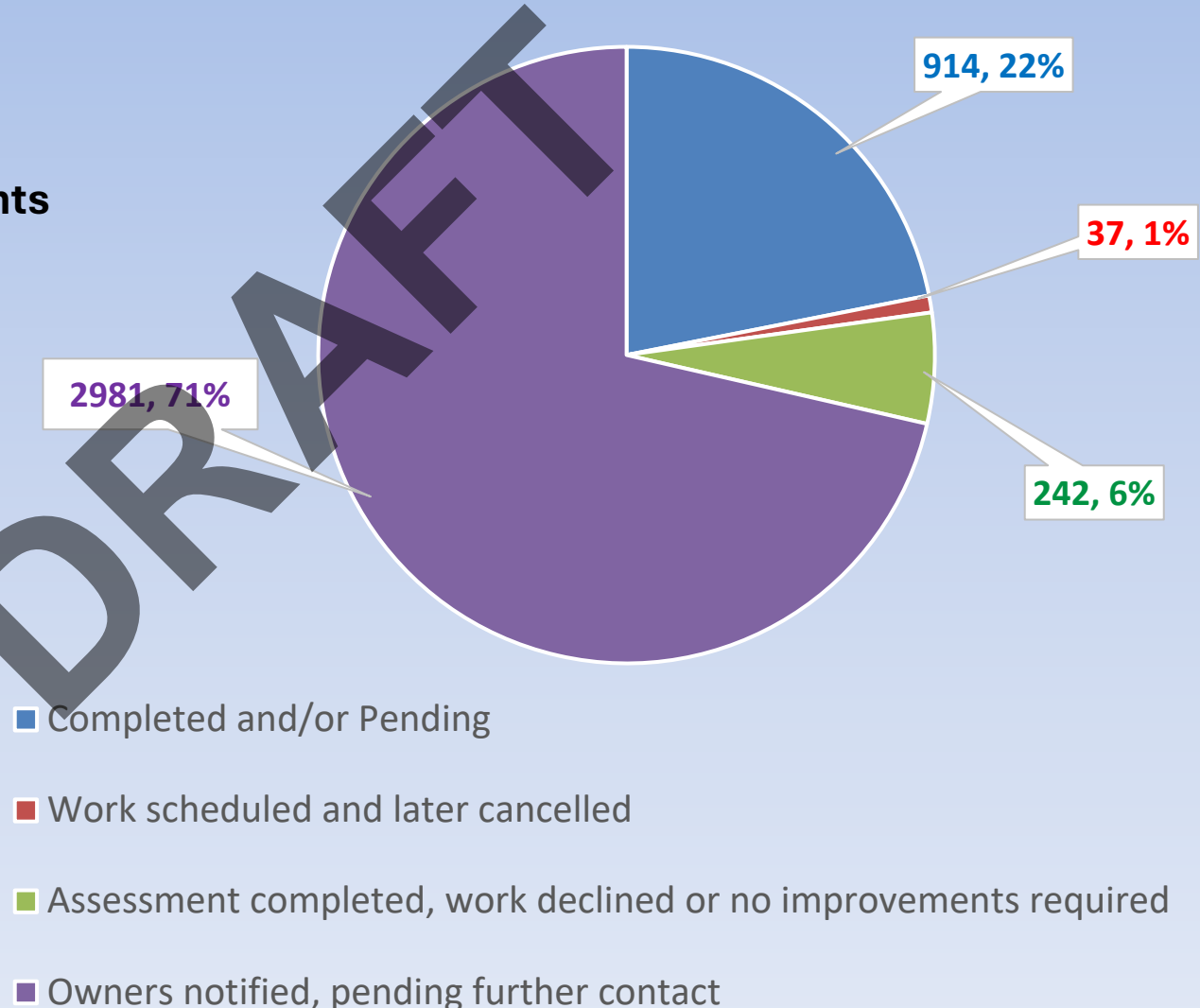
Sewer Backup Prevention Program (SBPP) in North Hartford

Project Name	2023			2024			2025			2026			2027	2028	2029
Sewer Backup Prevention															

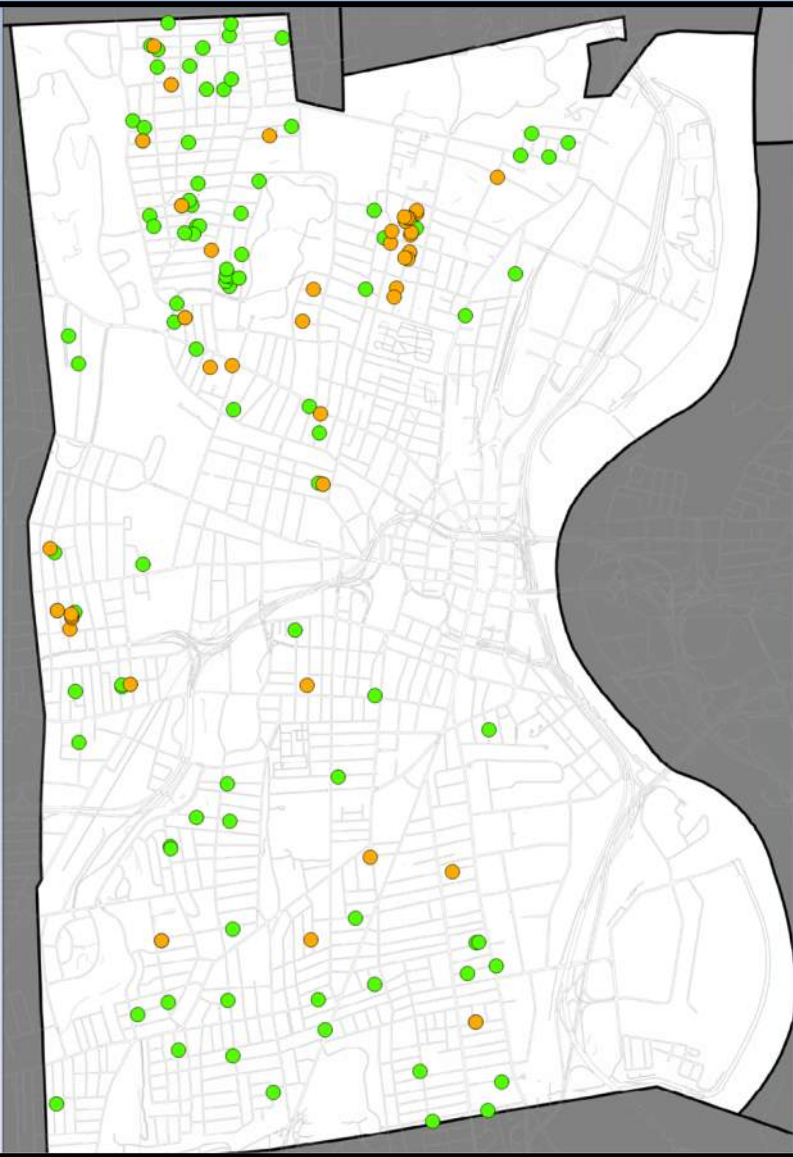
Total North Hartford SBPP to Date

Q3 2023 through end of 2025:

- 4,232 properties contacted
- 1,193 properties responded /assessments completed
- 951 properties with recommended improvements
 - 85% of Assessments completed have resulted in homeowner improvements
 - 424 properties with completed improvements



Sewer Backup Prevention and Sewer House Connection Programs



Hartford

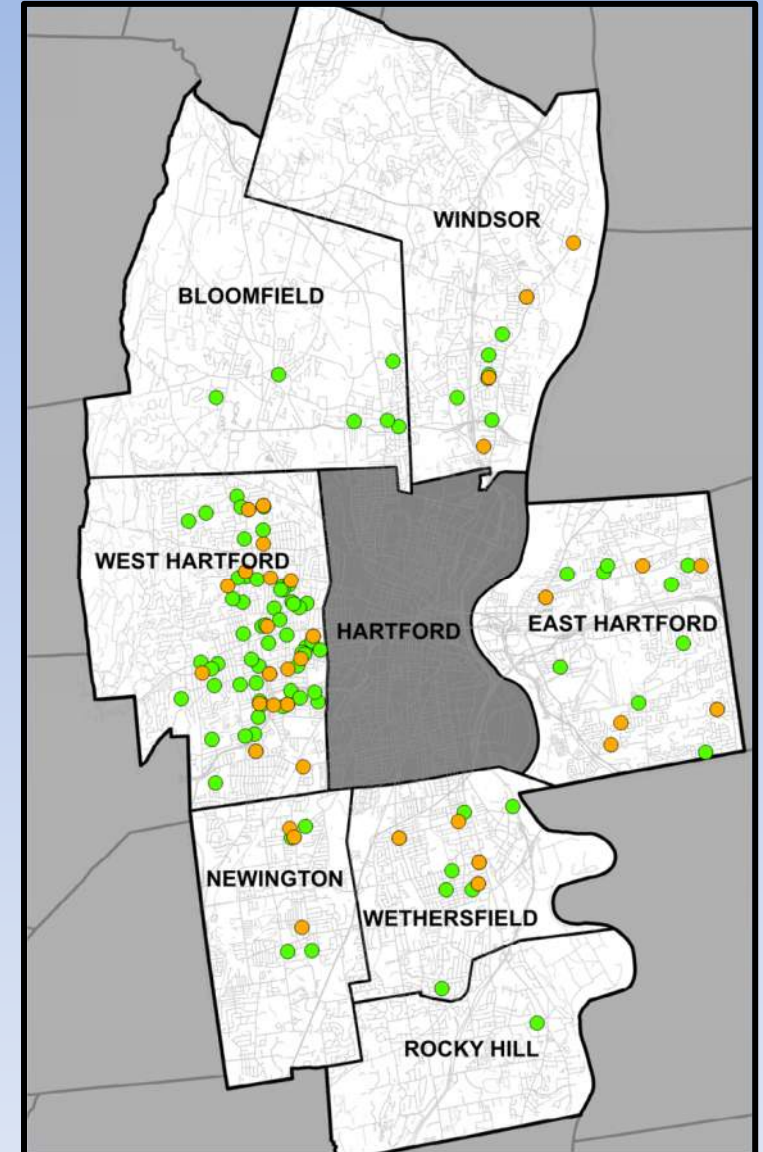
2025 Q4 Properties that Participated*

- 244 Sewer Backup Prevention Properties
- 78 Sewer House Connection Properties

(322 Total Properties)

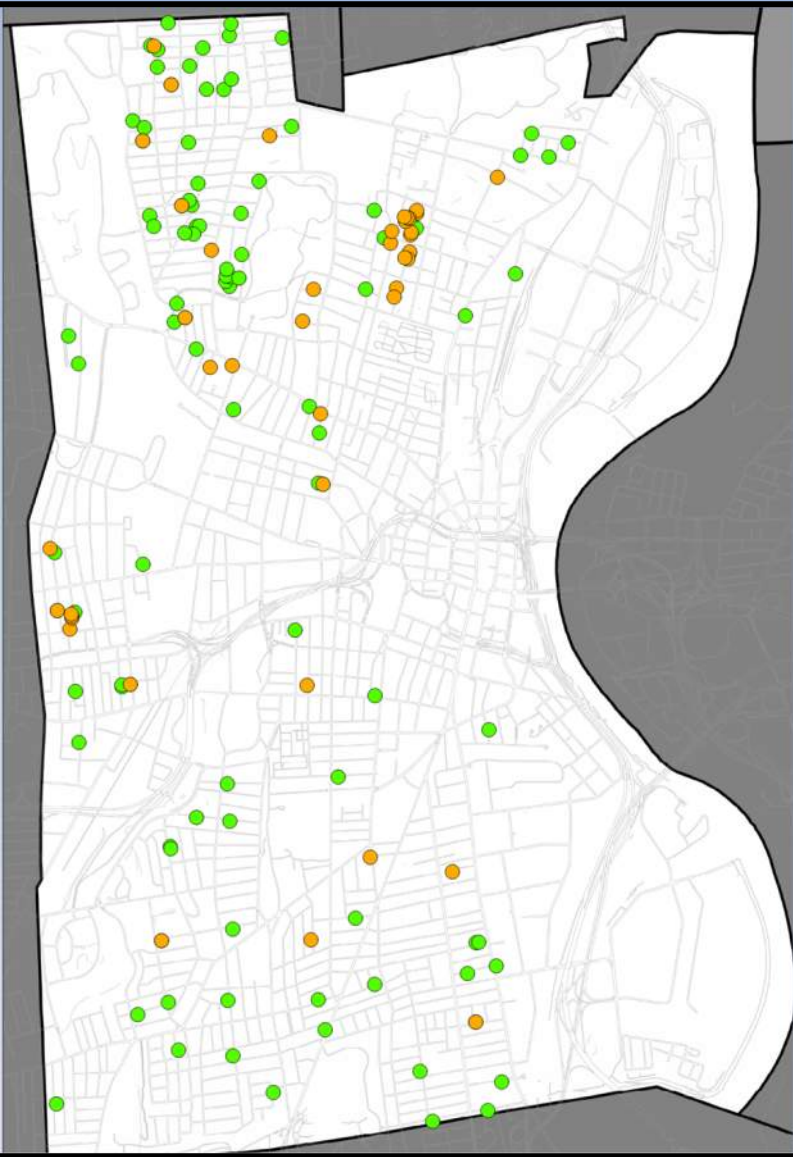
DRAFT

* Includes all properties that responded, scheduled appointments, received assessments, had improvements recommended, and/or had work completed



Outside of Hartford

Sewer Backup Prevention and Sewer House Connection Programs



Hartford

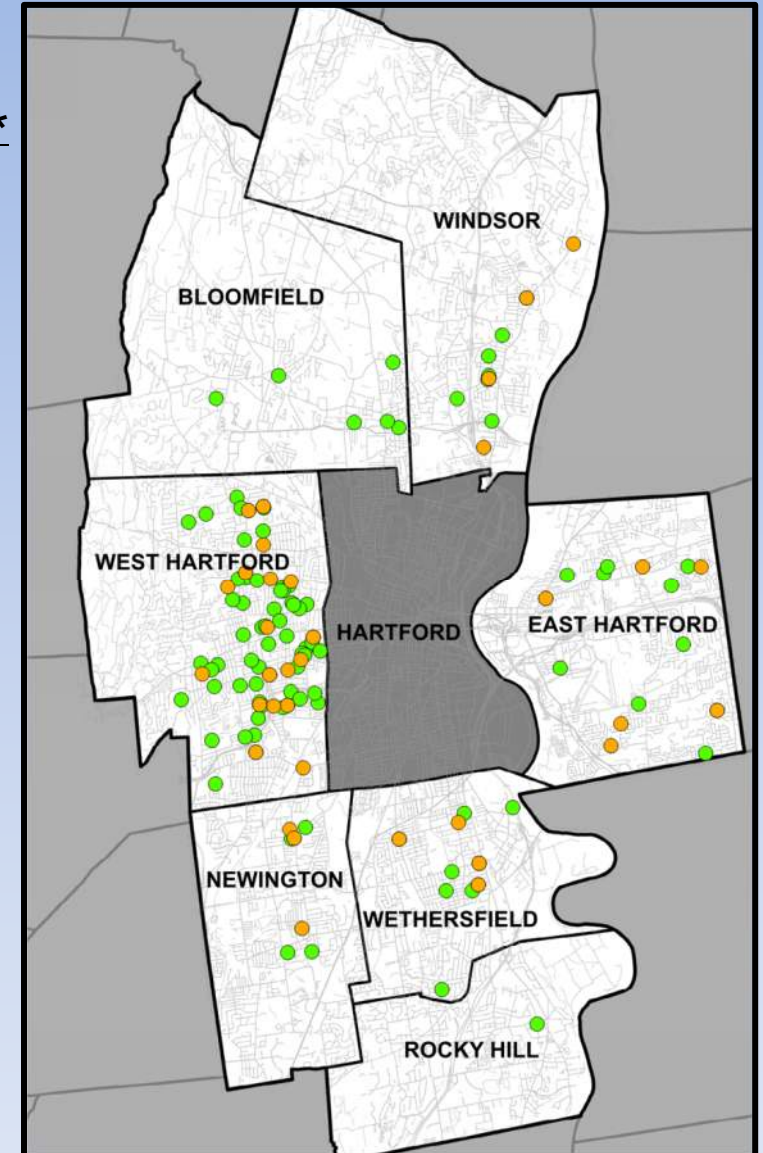
2025 Total Properties that Participated*

- 852 Sewer Backup Prevention Properties
- 313 Sewer House Connection Properties

(1,165 Total Properties)

DRAFT

* Includes all properties that responded, scheduled appointments, received assessments, had improvements recommended, and/or had work completed



Outside of Hartford

Consent Order Projects (as of 12/31/25): Outside of North Hartford

**South Hartford
Conveyance & Storage
Tunnel (SHCST) Contract 3:**
Construction of the SHCST
Dewatering Pump Station

Current CIP Sewer Rehab (in Gully Brook Area):
Rehabilitation of sewer mains and house
connections

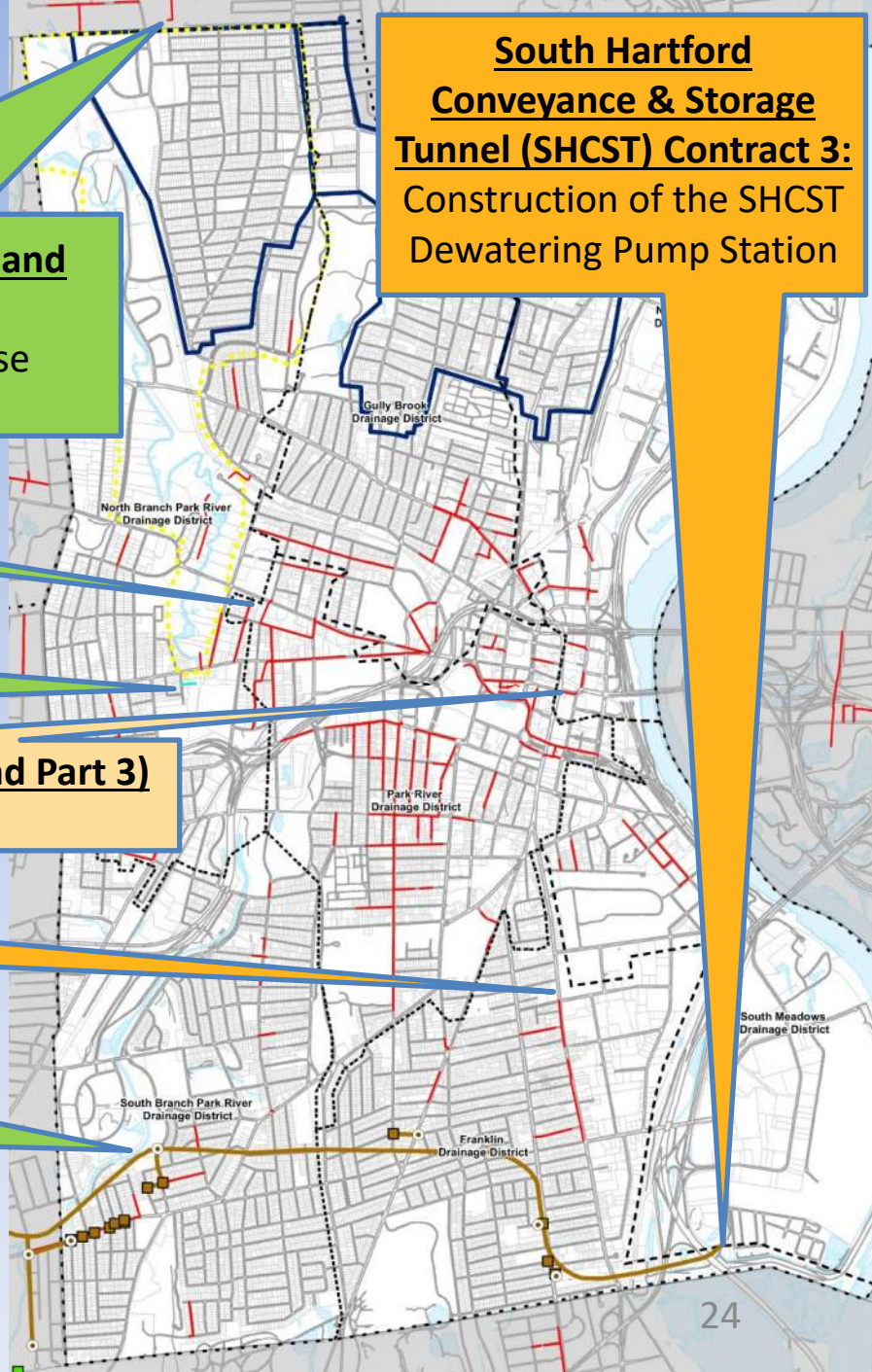
**Current CIP Sewer Rehab (in Bloomfield and
North Branch Park River):**
Rehabilitation of sewer mains and house
connections

I-4 (N-30) Improvements:
Rehabilitation of sewer mains
downstream of CSO I-4 (N-30)

18-in to 21-in Brick Rehabilitation (Part 2 and Part 3)
Rehabilitation of brick sewer mains

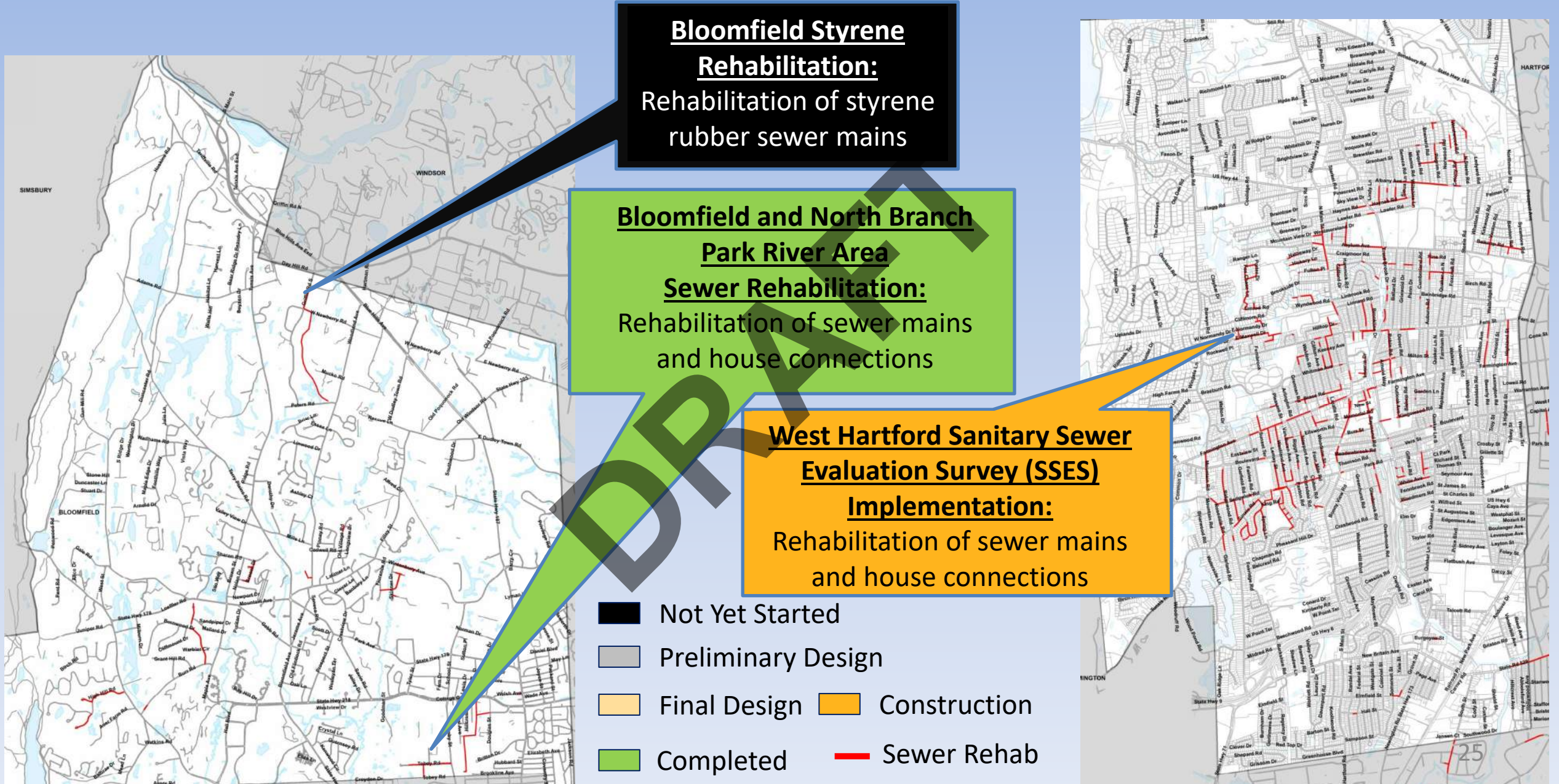
18-in to 21-in Brick Rehabilitation (Part 1)
Rehabilitation of brick sewer mains

South Hartford Conveyance & Storage Tunnel (SHCST) Contracts 2 & 5:
Construction of the SHCST, drop shafts and consolidation conduits



- Final Design
- Completed
- Preliminary Design
- Construction
- Sewer Rehab

Consent Order Projects (as of 12/31/25): Outside of Hartford



- Not Yet Started
- Preliminary Design
- Final Design
- Construction
- Completed
- Sewer Rehab

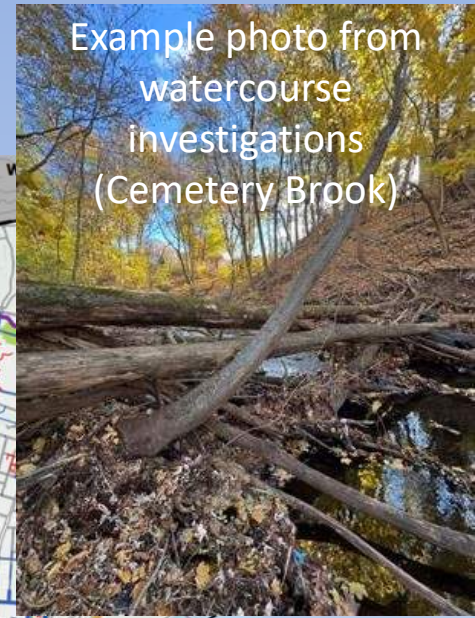
North Branch Park River Drainage Study Update

- **Importance of Study**
 - NBPR has sediment buildup (i.e., from streets) and blockages (i.e., from downed trees); contributes to street and localized flooding and backups
 - Study needed to determine
 - Required flood control and stream improvements (COH priority)
 - Approach to remove stormwater from sewers; eliminate CSOs (MDC priority)
- **Short term improvements performed to date**
 - City cleaned Park River Conduit inlet and Granby St conduit in 2024
 - Durham Street ROW and private property sewer separation completed
- **Update for 2025 (Q1 through Q4)**
 - Report finalized (w/COH comments) summarizing NBPR River improvements submitted earlier in 2025
 - Sewer separation design memo and conceptual plans finalized (w/MDC comments) and submitted to COH and MDC earlier in 2025
 - Executive summary drafted and will be submitted in Q1 2026
 - City and MDC: collaborating on a memorandum of understanding (MOU); will define the responsibilities, coordination, and projects to implement over next several years
 - Future COH projects pending
 - MDC projects include final design/construction of Granby sewer separation projects and new outfalls

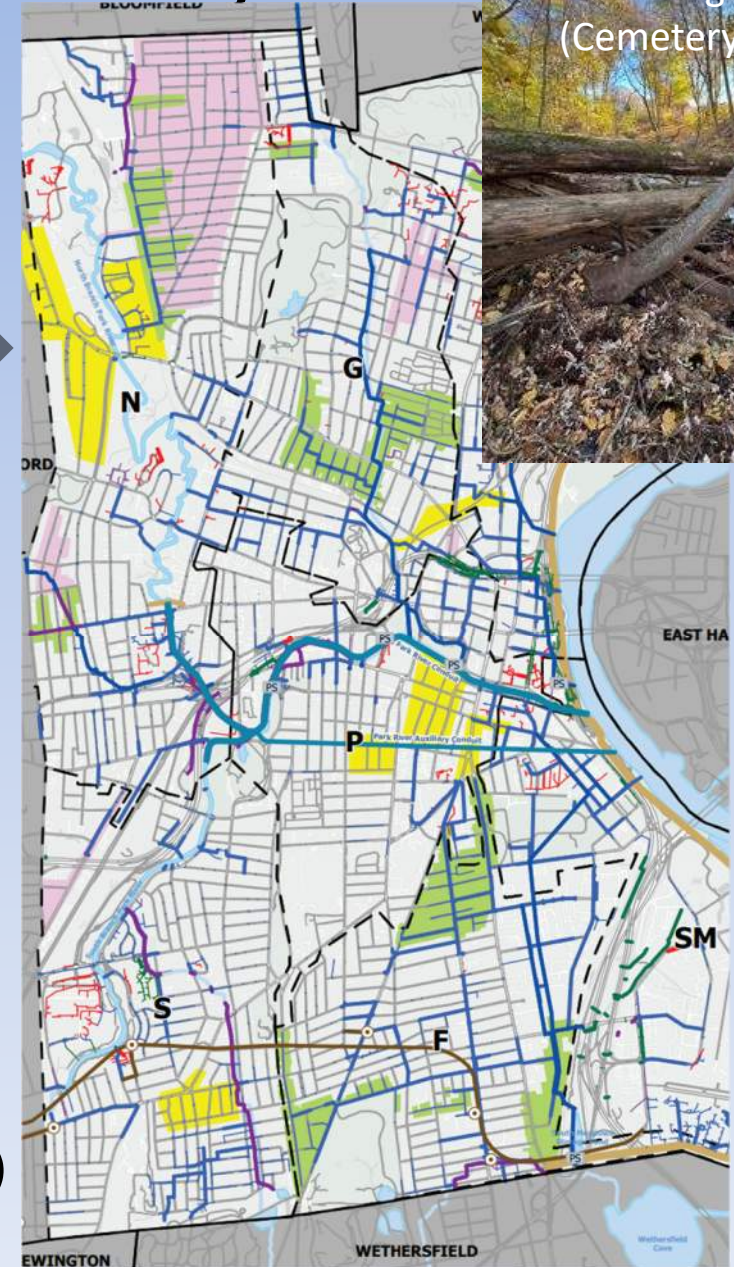


Hartford Drainage and Sewer Separation Study

Example photo from
watercourse
investigations
(Cemetery Brook)



- **City-wide drainage study began in Q3 2025**
 - Similar to North Branch Park River Drainage Study
 - Will encompass remainder of City
 - Will improve understanding of City drainage network
- Includes conceptual layout of sewer separation throughout Hartford
- Pre-cursor to 2028 CSO LTCP/IP Update
- Will also advance proposed solution for the Franklin Ave / Wethersfield Cove contributing area to preliminary design level (**Consent Order requirement**)
- Scheduled to be completed by end of 2027
- **2025 Q3 and Q4 Work Completed:**
 - Hydraulic modeling improvements based on temporary flow metering
 - Watercourse investigations completed (brooks, swales, etc)
 - Preparations made for upcoming CCTV (to begin Q1 2026)



Status of Projects: Key Performance Indicators (District Wide*)

Key Performance Indicators	Q4 2025 (October 1 through December 31)	2025 Annual (Jan 1, 2025 through Dec 31, 2025)	Total To Date (since 2019)
Storm drains or sanitary sewers installed (feet)	1,496	4,807	37,923
Sewer mains rehabilitated (feet) (miles)	38,622 (7.3)	160,435 (30.4)	566,583 (107.6)
Sewer laterals inspected (# of properties)	685	6,001	14,247
Sewer laterals renewed (# of properties) (feet)	871 (24,175)	2,989 (92,628)	5,586 (177,390)
Backwater valve/surcharge protection (# of properties)	75	695	2,321
Private property internal disconnects (# of properties)	30	94	356
Sewer or storm laterals installed via separation (to property line) (# of properties)	4	32	147
Private property separation completed (# of properties)	0	27	77

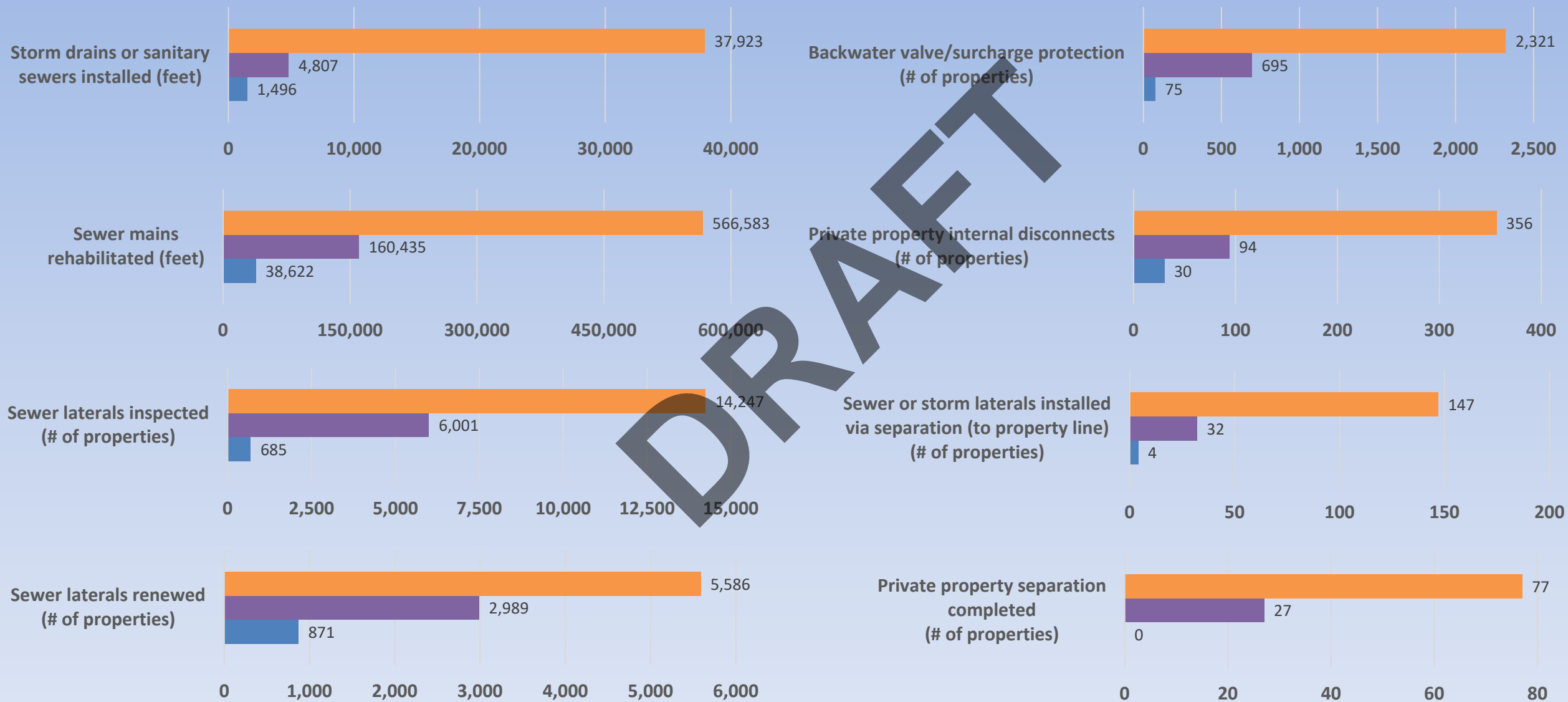
*Work in all Member Towns, including North Hartford

Status of Projects: Key Performance Indicators (North Hartford)

Key Performance Indicators	Q4 2025 (October 1 through December 31)	2025 Annual (Jan 1, 2025 through Dec 31, 2025)	Total To Date (since 2019)
Storm drains or sanitary sewers installed (feet)	476	3,787	13,307
Sewer mains rehabilitated (feet) (miles)	971 (0.2)	34,845 (6.6)	111,136 (21.1)*
Sewer laterals inspected (# of properties)	132	2,133	4,802
Sewer laterals renewed (# of properties) (feet)	469 (11,015)	1,534 (51,478)	2,372 (83,043)
Backwater valve/surcharge protection (# of properties)	36	199	748
Private property internal disconnects (# of properties)	7	35	134
Sewer or storm laterals installed via separation (to property line) (# of properties)	4	32	147
Private property separation completed (# of properties)	0	27	77

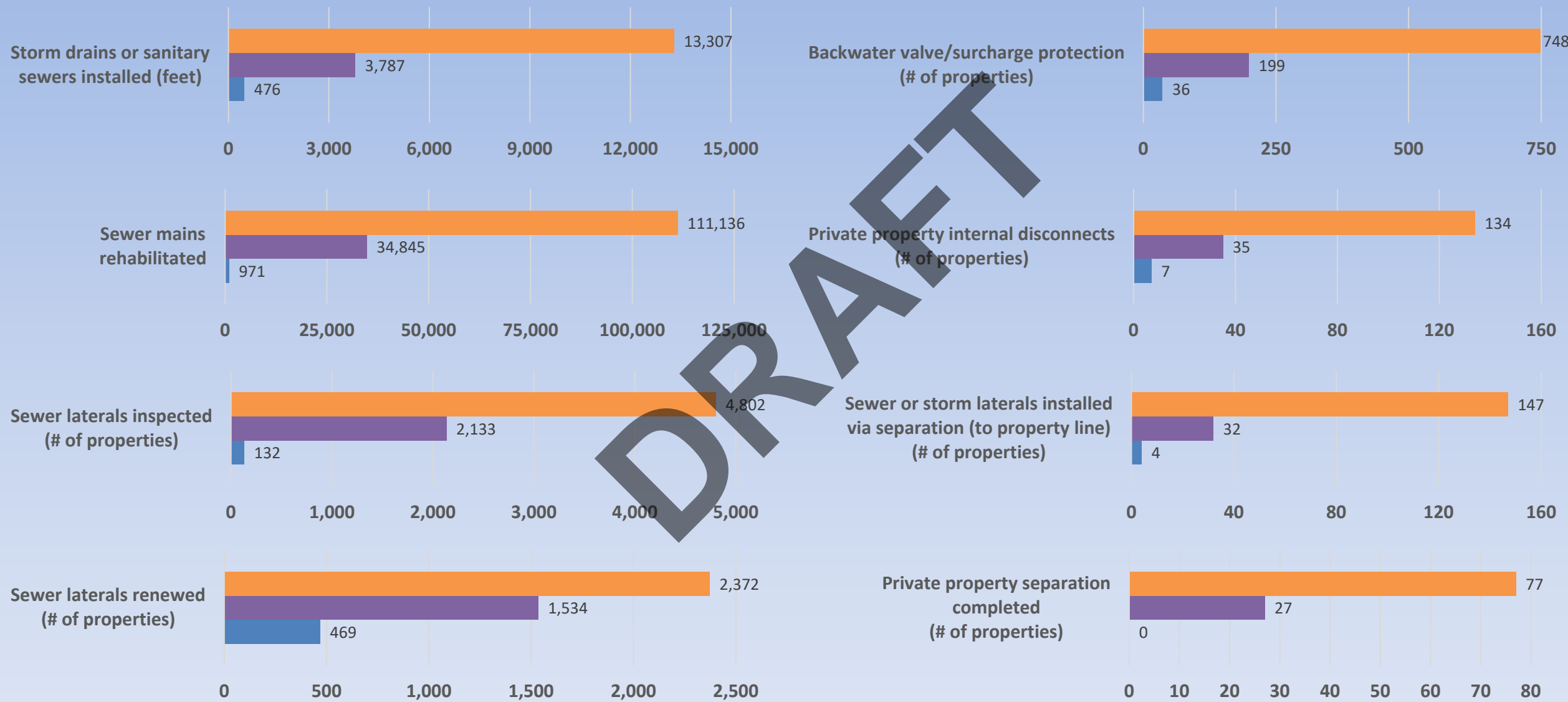
*Note that there is approximately 80 miles of sewer in North Hartford; therefore this is approximately 26% of the system²⁹

Status of Projects: Key Performance Indicators (District Wide*)



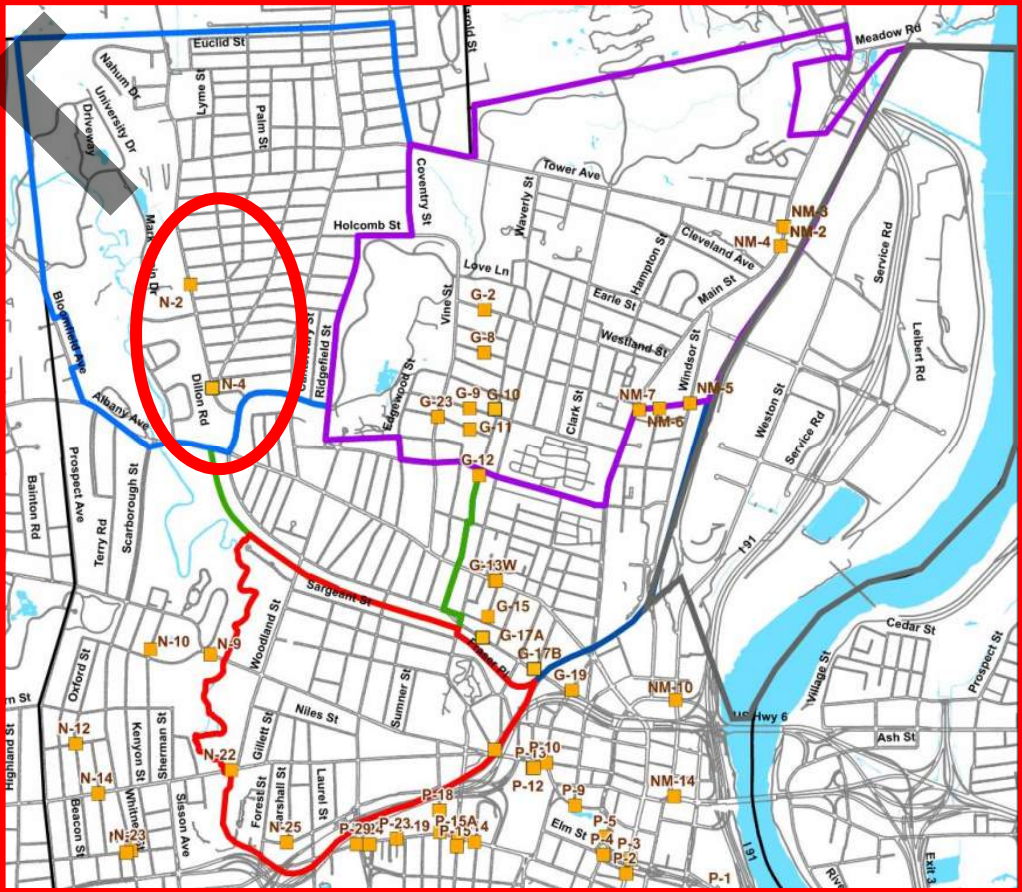
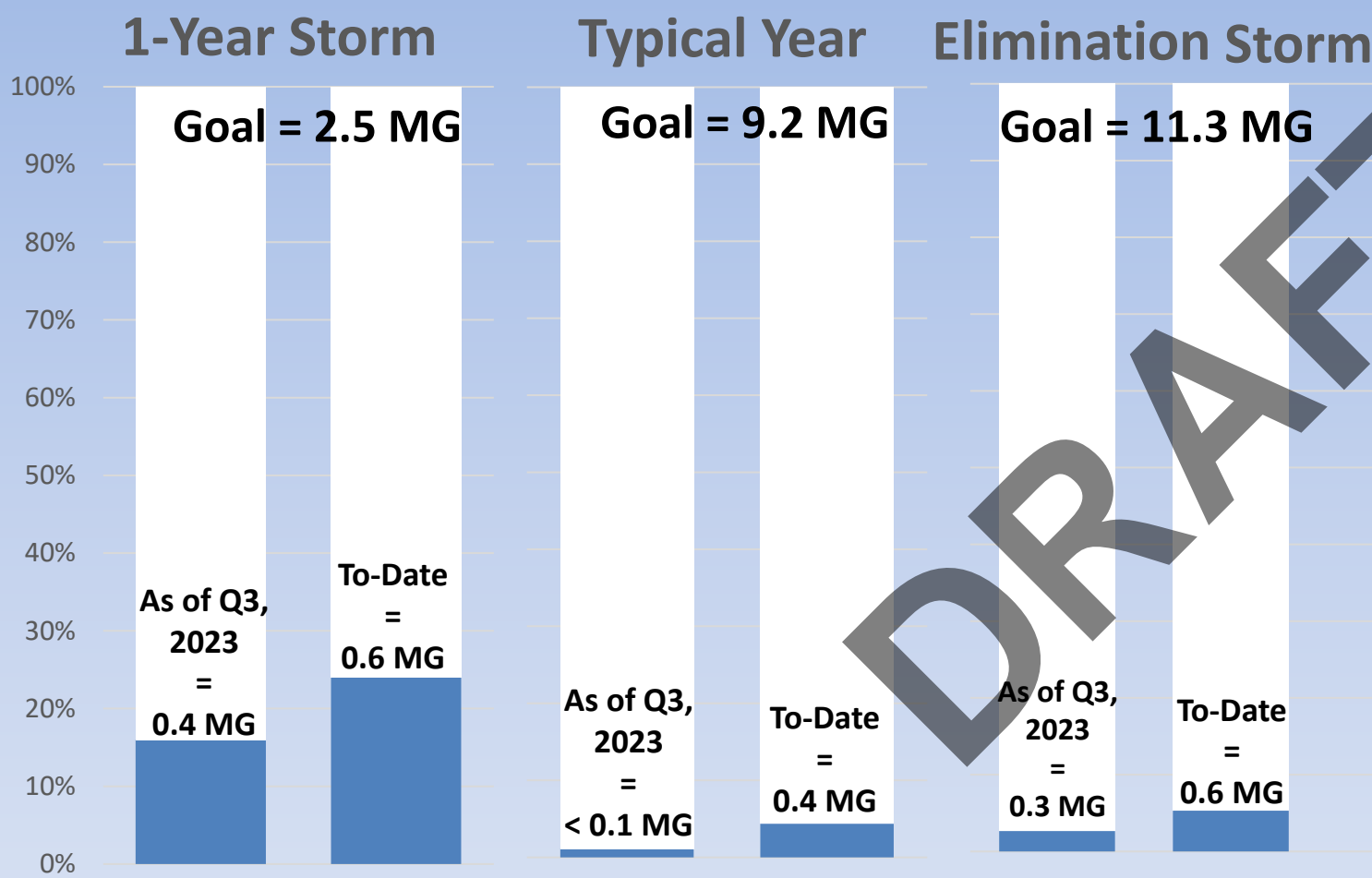
*Work in all Member Towns, including North Hartford

Status of Projects: Key Performance Indicators (North Hartford)



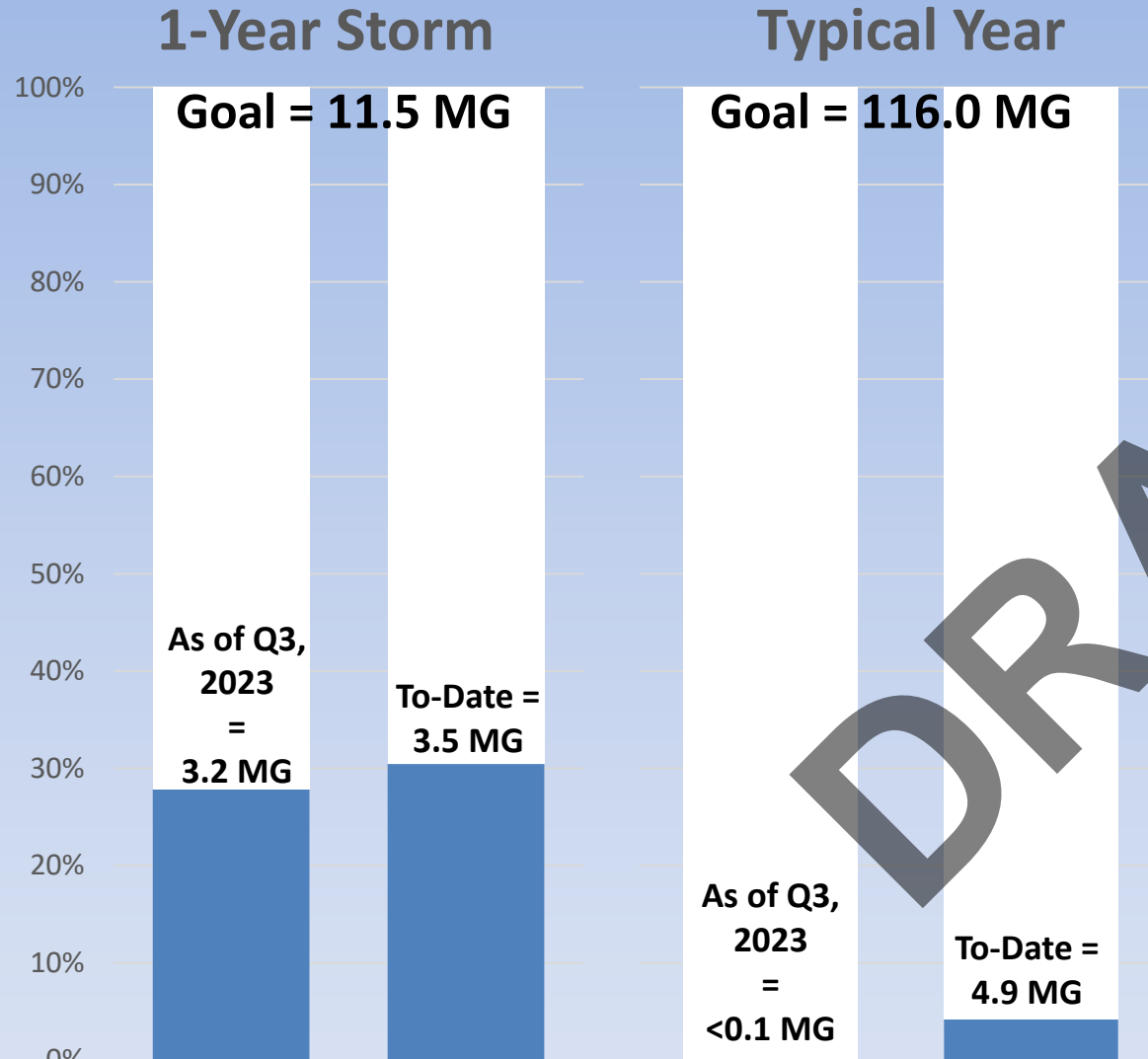
*Note that there is approximately 80 miles of sewer in North Hartford; therefore this is approximately 26% of the system

Status of Projects: N-2 and N-4 CSO Reduction



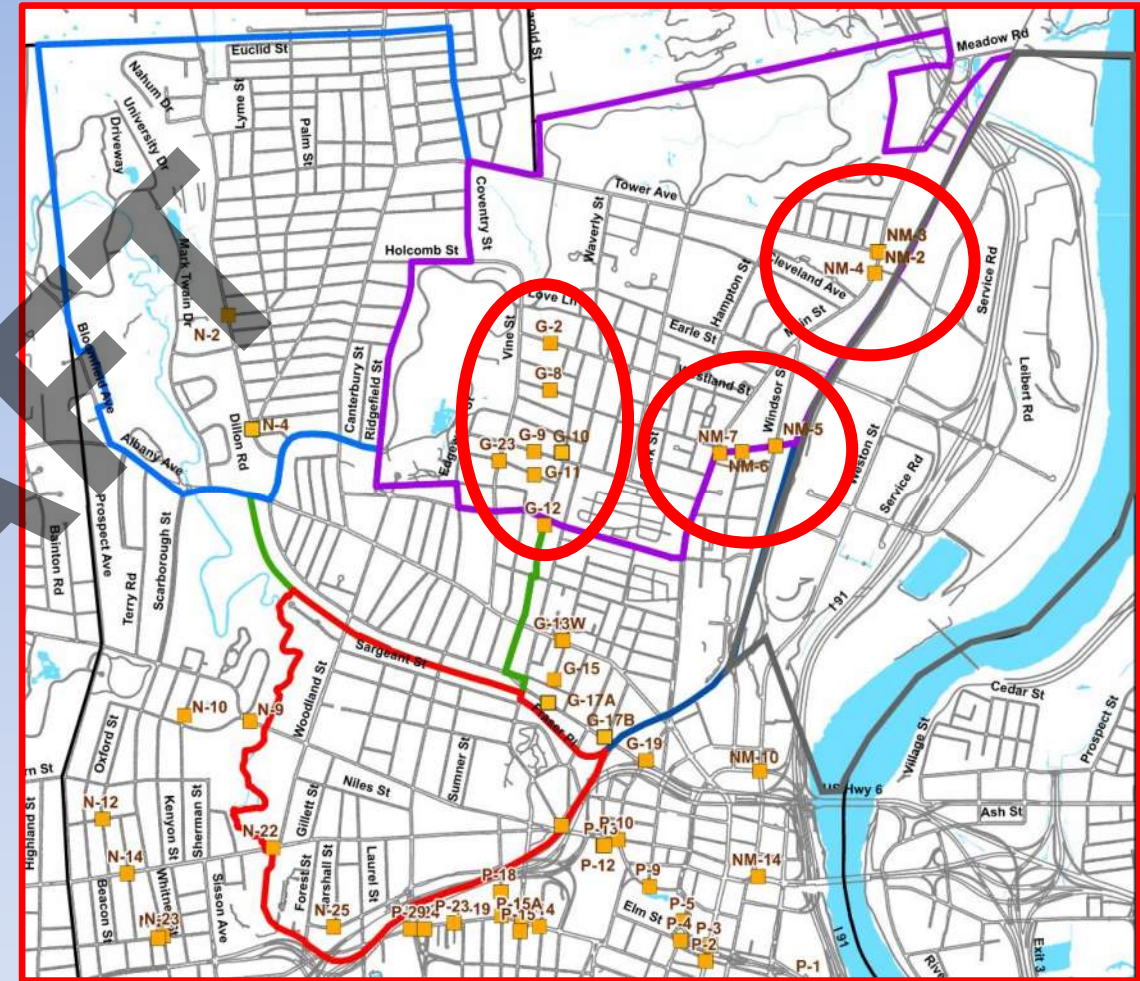
- Notes:**
1. Per the Consent Order, combined sewer overflows (CSOs) from N-2 and N-4 must be eliminated. Million gallon (MG) goals are per 2018 Integrated Plan.
 2. Q3 2023 represents the start of work completed under current Consent Order

Status of Projects: Gully Brook & North Meadows CSO Reduction



Notes:

1. Per the Consent Order, combined sewer overflows (CSOs) Gully Brook and North Meadows must be controlled to the 1-year storm. Goal represents the total million gallons (MG) of CSO that occurs in a 1-year storm and typical year.
2. Q3 2023 represents the start of work completed under current Consent Order



Community Outreach

Keeping people informed who live and work in the communities where construction is taking place is a critical component to the success of our projects.

- **Communication and Project Outreach**
 - On-going outreach is taking place for the House Connection (lateral lining) and Sewer Backup Prevention programs
 - Outreach is primarily conducted through mailings, door to door notifications and project meetings. Staff regularly attend local NRZ and Community Group Meetings as well.
 - View north Hartford projects and status: www.themdc.org
- **Outreach Office : 179 Barbour Street, Hartford**
 - The office is staffed Monday through Friday (M, W, F, 9:00 -1:00, Tu, 1:00-4:00, Th, 1:00-5:00)
 - The public is welcome to stop in for information on projects, schedules, and related activities.
 - Those interested in training and employment are either directed to our Contractor Career Development and Compliance team or to visit our website to view and/or apply for current MDC Job Openings at www.themdc.org



MDC's 2025 Strategy to Scale Small, Minority, Women and Disadvantaged Businesses (SBE, MBE, WBE, DBE)

(Year in Review: From Certification to Market Readiness)

- **Contractor Certification & Registration Clinics (The Foundation)**
 - Q1: Launched monthly clinics with CT DAS, APEX Accelerator, NAWIC, and Uhart.
 - Q1-Q2: Capability Statements, SAM.gov renewals, S/MBE recertification coaching
 - Q2: eProcurement platform navigation and cybersecurity compliance
 - Q3: "Navigating State & Municipal Opportunities" seminar
 - Q4: Year-end DAS audit — **zero gap** in vendor eligibility for 2026
- **Growth Phase: Scaling Minority Contractor Capacity (The Engine)**
 - Q1: Launched HEDCO + MDC Contractor Growth Initiative (COD to net terms, financial literacy, credit-readiness)
 - Q3: Gap Analysis (July 1) — stopped guessing, let data drive curriculum
 - Q3: Delivered targeted workshops: Digital Marketing (July) and Estimating (August)
 - Q4: Delivered Job Costing workshop (October)
 - Q4: Designed "Phase 2" curriculum — focus on **Contract Protection** to safeguard 2025 cohort investment

2025 Hands-On Certification Clinics

Small/Minority Business Enterprise (S/MBE) & System for Award Management (SAM)

Join us to review your S/MBE and SAM applications.

- Receive personalized assistance from the state's Procurement Division and CT APEX Accelerator.
- Completed certification helps companies build revenue and find potential new customers through growth and marketing opportunities.

SAM registration is a requirement for the CT S/MBE Certification.

**CT APEX Accelerator is offering additional training on:*

- **March 12:** Capability Statement Workshop: Showcase Your Business to Win Contracts
- **June 18:** Cybersecurity Essentials: Protecting Your Business in the Digital Age
- **September 17:** Navigating State and Municipal Opportunities: Market Research for Success

Clinics are held on Wednesdays:

- February 19
- March 12*
- April 16
- May 21
- June 18*
- August 20
- September 17*
- October 15
- November 19

Location:

The Metropolitan District
(MDC) Training Center
125 Maxim Road
Hartford, CT 06114

Time:

12:00 PM—2:00 PM

Brought to you by Industry Partners



Pre-Registration is Required to Attend.

EMAIL: Kevin Nodwell at: kevin.nodwell@ct.gov.

LUNCH IS PROVIDED.
NO COST TO ATTEND.
SPACE IS LIMITED.

MDC's 2025 Strategy to Scale Small, Minority, Women and Disadvantaged Businesses (SBE, MBE, WBE, DBE) Continued....

(Year in Review: From Integration to Pipeline Generation)

- **Joint Venture Expansion with Prime Contractors**

- Q1-Q2: Matchmaking for joint ventures on active MDC projects
- Q3: Shifted to **1:1 Prime-Sub integration** on BWV and HCP rosters
- Q4: Initiated Prime re-engagement strategy to safeguard Hartford Resident employment goals
- Q4: Pivoted recruitment to target high-aptitude 20-21 year olds (non-college bound)

- **Contractor Standards & Field Training**

- Q1-Q3: On-site installation support, quality control, and compliance reviews for BWV and HCP
- Q2: Contractor Compliance Training to standardize MBE/WBE and Hartford resident reporting
- Q4: Launched "Basement Assessment Blitz" (North End churches) — generating **direct work pipeline** for trained contractors

2025 Hands-On Certification Clinics

Small/Minority Business Enterprise (S/MBE) & System for Award Management (SAM)

Join us to review your S/MBE and SAM applications.

- Receive personalized assistance from the state's Procurement Division and CT APEX Accelerator.
- Completed certification helps companies build revenue and find potential new customers through growth and marketing opportunities.

SAM registration is a requirement for the CT S/MBE Certification.

**CT APEX Accelerator is offering additional training on:*

- **March 12:** Capability Statement Workshop: Showcase Your Business to Win Contracts
- **June 18:** Cybersecurity Essentials: Protecting Your Business in the Digital Age
- **September 17:** Navigating State and Municipal Opportunities: Market Research for Success

Clinics are held on **Wednesdays:**

- February 19
- **March 12***
- April 16
- May 21
- **June 18***
- August 20
- **September 17***
- October 15
- November 19

Location:

The Metropolitan District
(MDC) Training Center
125 Maxim Road
Hartford, CT 06114

Time:

12:00 PM—2:00 PM

Brought to you by Industry Partners



Pre-Registration is Required to Attend.

EMAIL: Kevin Nodwell at: kevin.nodwell@ct.gov.

**LUNCH IS PROVIDED.
NO COST TO ATTEND.
SPACE IS LIMITED.**

MDC's Evolving Partnership: Community Engagement & Talent Pipeline Expansion

(Year in Review: Outreach, Partners, and Recruitment)

- **Key Community & Education Partner Activities**

- GHAAA Weekly Engagement: Contractor visibility updates every Saturday — all year
- Hartford NRZ Engagement: Monthly communications with MARG, WECA, NERA, Blue Hills, Southwest/Behind the Rocks
- Weaver HS Credential Program: OSHA-10 training, field exposure, and continuing mentorship (Q1-Q2)
- HPHS Engineering Green Tech (EGT) Subcommittee:
 - IAB meetings throughout the year (April, July, Sept, Oct, Nov, Dec)
 - Q1-Q2: Curriculum alignment with Pratt & Whitney and ReadyCT
 - Q3: Strategic shift — stopped chasing volume, focused on **high-impact field experiences**
- Trade Tuesday & Workforce Wednesday: Launched industry days with ReadyCT at HPHS (Q1)
- Career Exposure Events: Newington, Windsor, Wethersfield, Waterbury CTECS (Q1-Q2)
- Q4: ECLAC Quarterly Meeting — collaborated on classroom engagement and facility tours
- Q4: Ready CT interviewing panel at HPHS — scouting Try-A-Trade 2026 candidates



MDC's Evolving Partnership: Community Engagement & Talent Pipeline Expansion Continued....

(Year in Review: Outreach, Partners, and Recruitment)

- **Contractor Networking & Job Fair**

- Q1: Construction Industry Career Fair (Rocky Hill) — BLD hired 1 HS graduate
- Q2: Andrew Associates (June 3), CWE/WBENC Matchmaker (June 18), CCSU/Dept of Labor Fair (June 12)
- Q3: Hartford Athletic Job Fair at Dillon Stadium (Sept 10), Targeted Matchmaking at Outreach Office
- Q4: Tunxis CC (Oct), Hartford High (Oct), Transportation Matchmaker (Nov), Workforce Summit at Gateway CC (Nov), Asylum Hill Fair (Dec), CT Business Matchmaker (Dec)
- Employer engagement follow-up initiated with multiple primes and subs — all year

- **Q4 Evolution: Direct Community Pipeline**

- Launched "Basement Assessment Blitz" at 6 North End churches (Dec)
- Generating **direct work pipeline** for newly trained contractors



MDC's Evolving Partnership: Scaling Programs & Building Internal Systems

Year in Review: *(Try-A-Trade, Retention and Career Pathing)*

- **Try-A-Trade Program Evolution**

- Q1: 12 students selected (5 alternates) from 60+ applicants; family involvement added to interview process
- Q2: April program delivered — all 12 earned Flagger Certification; rotations across 6 divisions
- Q3: 8 interns placed in Work-Based Learning Program — **first female participant in Plant Maintenance**
- Q4: 2026 planning underway — pivoted to recruit high-aptitude 20–21-year-olds (non-college bound)

- **Retention & Employment Success**

- 2024 cohort: 2 hired full-time by MDC, 2 retained part-time, 1 enrolled in Class 1 Wastewater license training
- Graduates transitioned to Aztec, Top Notch Flaggers, TT&CA via HEDCO partnership
- Zero turnover — 100% retention of 2024/2025 hires
- **13 Hartford residents now in confirmed long-term employment**



TRY-A-TRADE

Monday, April 14 - Thursday, April 17, 2025

ABOUT THE PROGRAM

The Metropolitan District's (MDC) "Try-A-Trade" program is an unpaid high school learning opportunity which runs the week of spring break. It was created to educate and introduce students to the many career opportunities within the trades and Water/Wastewater utility.

The best way to find out if you like something is to give it a try! Try-A-Trade is a one week hands-on program to do just that! Join us as we explore several different and profitable career paths through hands-on learning! Students will have the opportunity to earn certificates as well as gain knowledge and a better understanding of various career opportunities in the trades and at the MDC. Participants will receive Personal Protective Equipment including a Hard Hat, Safety Glasses, Work Gloves and PPE bag.

PROGRAM DETAILS (Open to High School Juniors and Seniors)

Dates: April 14th - 17th, 2025
Time: 8:00 am - 2:30 pm
Location: MDC Training Center, 125 Maxim Road, Hartford, CT

Please complete intake form: 

CAREER PATHS

- WATER TREATMENT
- WATER POLLUTION CONTROL
- OPERATIONS
- FACILITY MAINTENANCE
- ELECTRICAL
- INSTRUMENTATION AND CONTROL

 Questions? Email human-resources@themdc.com or call (860) 278-7850 ext. 3268

MDC's Evolving Partnership: Scaling Programs & Building Internal Systems Continued...

Year in Review: *(Try-A-Trade, Retention and Career Pathing)*

- **System Enhancements: Centralized Career Pathing**
 - Skilled-trade pipeline: Flagger → CDL → labor roles
 - OIT Roadmap for 2024 hires to ensure Class 1 License success
 - **"Big Brother" Coaching Model** — tackling real-life barriers to ensure vesting
 - Training Coordinator role formalized; Class I/II Wastewater study plans developed
- **Education & Pipeline Development**
 - CTECS Portal + Handshake Portal connecting students to MDC trades and internships
 - University of Hartford: Facility tour + recruitment via Handshake
 - HEDCO Training Program: 10 WBE/MBE contractors enrolled — business operations, HR, financial management, marketing



TRY-A-TRADE

Monday, April 14 - Thursday, April 17, 2025

ABOUT THE PROGRAM

The Metropolitan District's (MDC) "Try-A-Trade" program is an unpaid high school learning opportunity which runs the week of spring break. It was created to educate and introduce students to the many career opportunities within the trades and Water/Wastewater utility.

The best way to find out if you like something is to give it a try! Try-A-Trade is a one week hands-on program to do just that! Join us as we explore several different and profitable career paths through hands-on learning! Students will have the opportunity to earn certificates as well as gain knowledge and a better understanding of various career opportunities in the trades and at the MDC. Participants will receive Personal Protective Equipment including a Hard Hat, Safety Glasses, Work Gloves and PPE bag.

PROGRAM DETAILS *(Open to High School Juniors and Seniors)*

Dates: April 14th - 17th, 2025

Time: 8:00 am - 2:30 pm

Location: MDC Training Center, 125 Maxim Road, Hartford, CT

Please complete intake form: 

CAREER PATHS

- WATER TREATMENT
- WATER POLLUTION CONTROL
- OPERATIONS
- FACILITY MAINTENANCE
- ELECTRICAL
- INSTRUMENTATION AND CONTROL

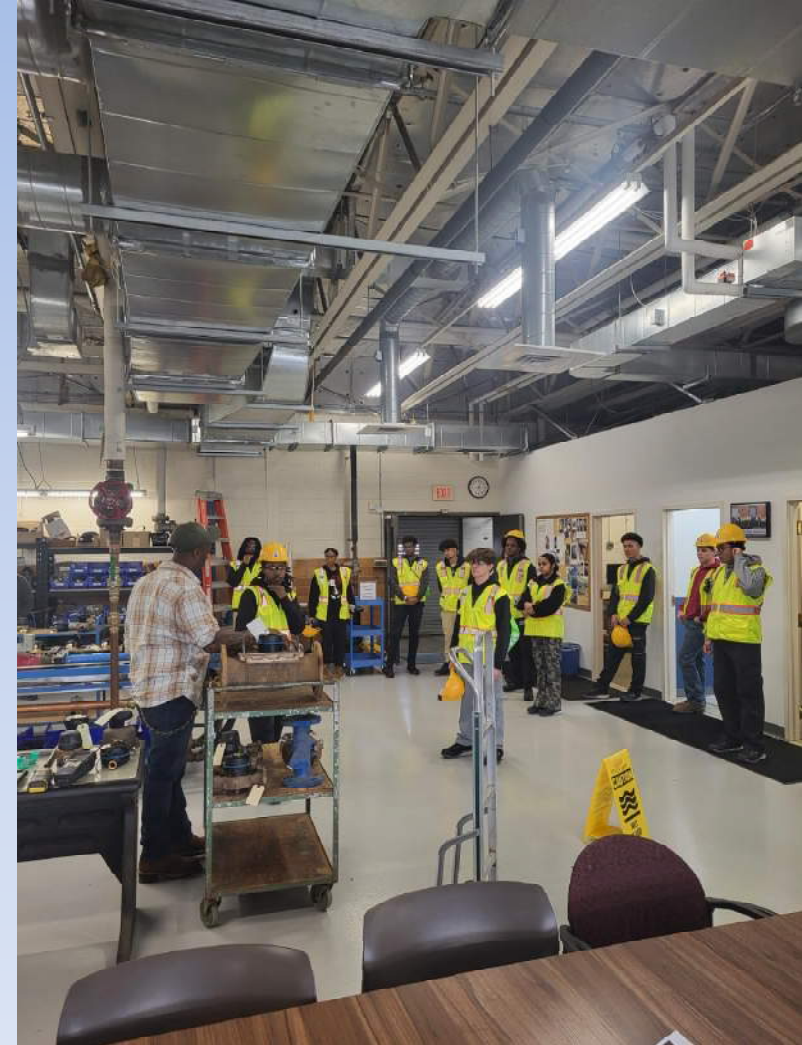
MDC

Questions? Email human-resources@themdc.com or call (860) 278-7850 ext. 3268

MDC's Partnerships: Metrics from Transforming Local Labor Recruitment

(Year in Review: Local Workforce & Contractor Development in the North End)

- **Workforce Goal:** Meeting **30% Hartford Resident** workforce target.
- **Contractor Hiring & Scaling**
 - **New Hires (Q3):** **3 new Hartford residents** hired by MDC Contractors.
 - Total To-Date: **20 Hartford residents** placed in employment.
 - **Expansion: Top Notch Flaggers** expanded via Utility Services & Prime contracts.
 - Total To-Date: **8 employees hired** (includes 4 Hartford residents).
 - **MBE Scaling: 4 Subcontractors** scaled operations 2x-3x (All Points, Service Relief, TT&CA, Aztec).
 - Total To-Date: **4 Contractors** awarded work (2 Hartford, 2 Non-Hartford).
 - Q4: DAS certification renewals secured (Service Relief, TT&CA, All Points Plumbing)
 - zero gap for 2026 eligibility.
- **Student Pipeline & Retention**
 - **Summer WBL: 8 students** placed in MDC summer employment this quarter.
 - Total To-Date: **14 students** gained summer employment.
 - **Cohort Status: Zero Turnover** for existing 2024/2025 Try-A-Trade hires (No new hires Q3).
 - Total To-Date: **3 Full-Time employees** hired (2 HPHS, 1 Newington).
 - **Long-Term Placement: 3 Hartford residents** confirmed in long-term roles under new training initiatives.
 - Total To-Date: **13 Hartford residents** transitioned into long-term employment.



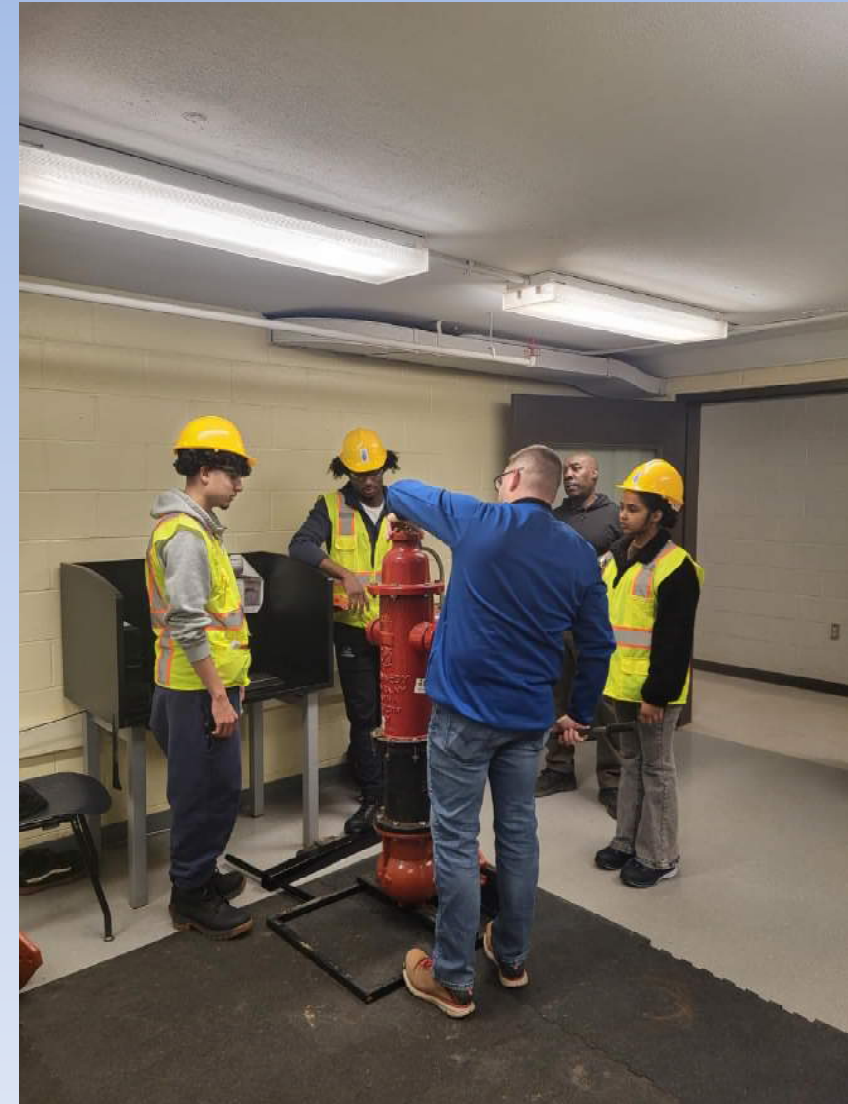
MDC's Partnerships: Metrics from Transforming Local Labor Recruitment Continued....

- **Workforce Development and Educational Partnerships**
 - **Partnership Expansion:** Expanded network to include **Ready CT** and **Pratt & Whitney**, plus **2 MDC Board Seats** on the HPHS Industry Advisory Board (IAB).
 - **Facility Tours (Q3):** Hosted **University of Hartford** engineering students at West Hartford Treatment Plant.
 - Total To-Date: **5 Facility Tours** (Lincoln Tech, HPHS 9th Graders, UHart, 24/25 Try-A-Trade Cohorts).
 - **Pathway Development:** Advancing STEM credentialing at **Weaver HS** and Water/Wastewater Operator pathways with **Goodwin University**.
 - **Sustainability:** Maintained full-time employment and learning placements across **5 MDC divisions**.
 - **Q4:** ECLAC Quarterly Meeting — collaborated with **Ready CT** on classroom engagement and facility tour strategy.
 - **Q4:** Served on Ready CT interviewing panel at HPHS — scouting Try-A-Trade 2026 candidates.
 - **Q4:** 6 job fairs attended (Tunxis CC, Hartford High, Transportation Matchmaker, Gateway CC Workforce Summit, Asylum Hill, CT Business Matchmaker).

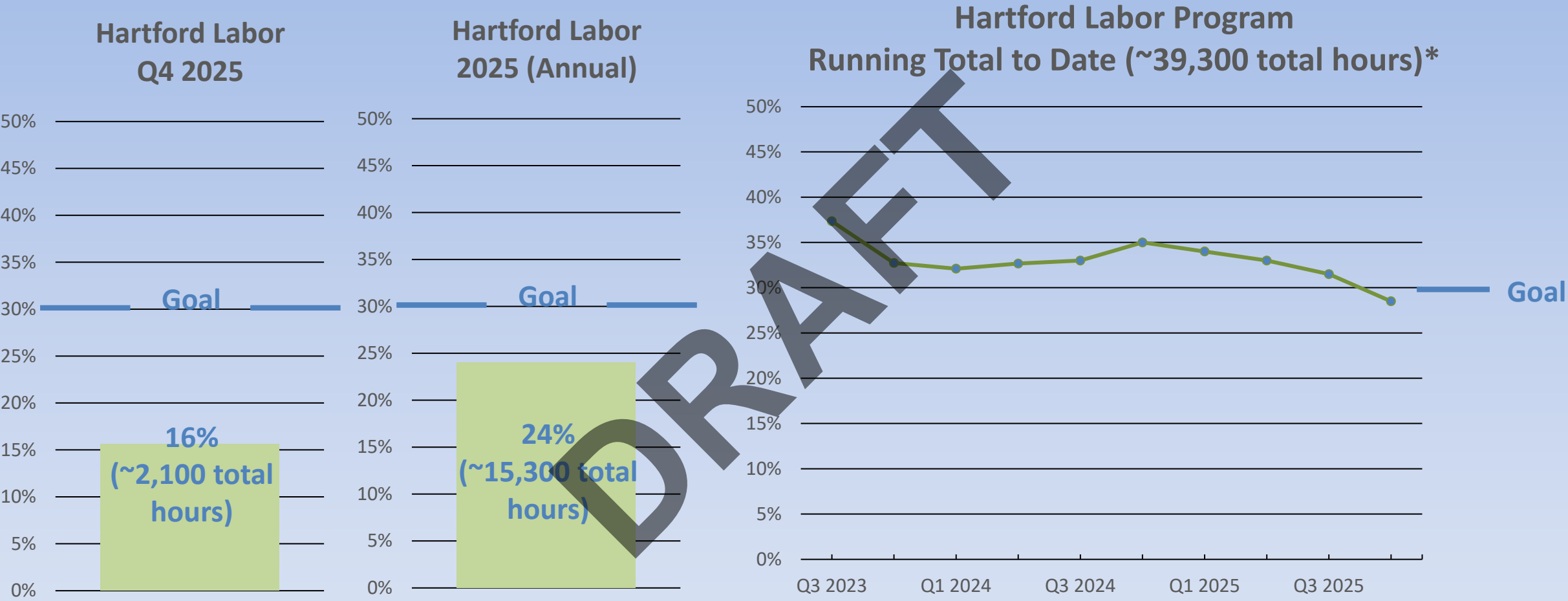


MDC's Partnerships: Metrics from Transforming Local Labor Recruitment Continued....

- **Program Assets & Capacity Building**
 - **Recruitment Tool:** Finalized **Try-A-Trade Promotional Video** to showcase program impact.
 - **[Watch Video: Try-A-Trade Promo]** (<https://youtu.be/70VgSzwFuMA>).
 - **HEDCO Training Program:** 6 WBE/MBE contractors enrolled in HR, finance, marketing, and estimating training tracks.
 - **[Watch Video Q4: HEDCO Training]** (<https://youtu.be/rQ84nWrHhyk>).
 - **Q4:** HEDCO Graduation Ceremony (Nov) — celebrated contractor achievements and program completion.
 - **Q4:** 3 contractors received small business funding from **People's Bank** through HEDCO partnership.
 - **Q4:** HEDCO 2026 cohort proposal reviewed; "Phase 2" curriculum designed focusing on Contract Protection.
 - **Q4:** Launched "**Basement Assessment Blitz**" at 6 North End churches — generating direct work pipeline for trained contractors.

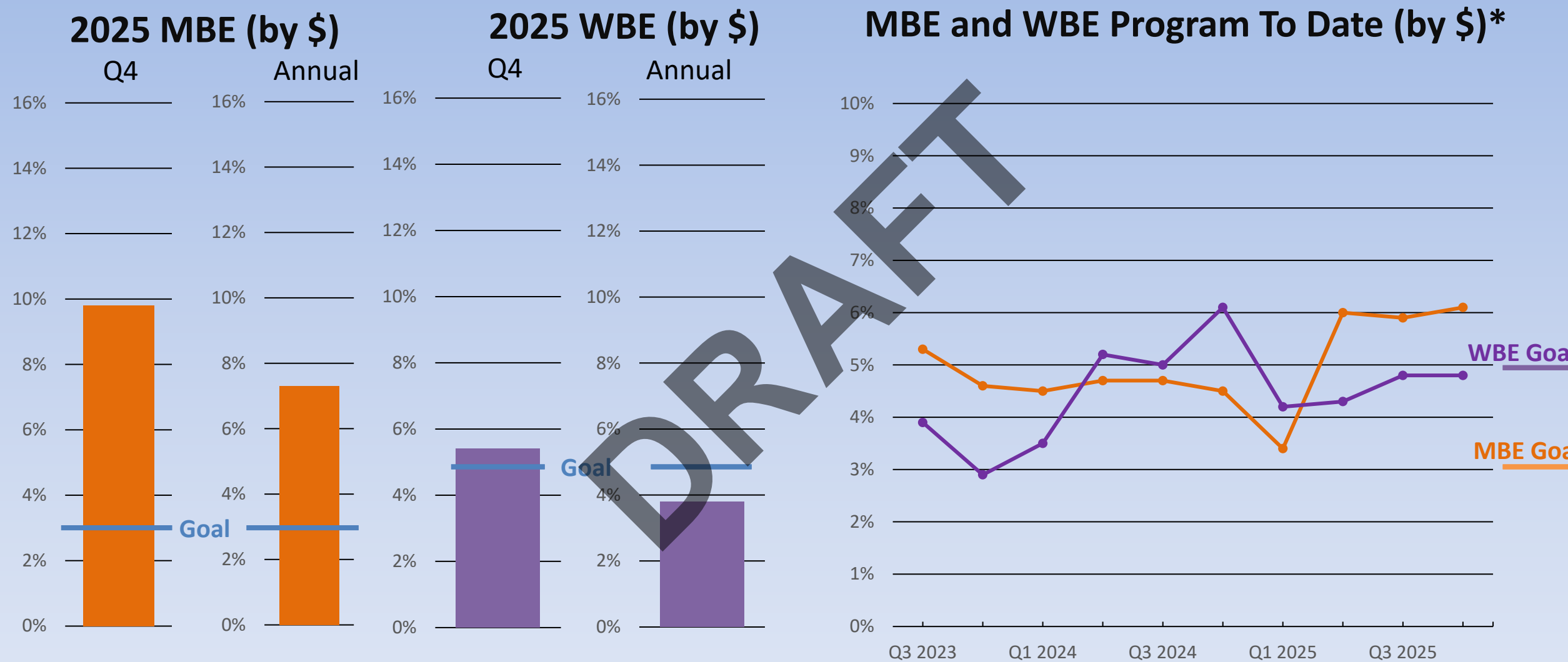


Hartford Labor Status



Note*: Statistics are based on all Hartford Consent Order projects started after July 2023 under construction. 30% target based on similar City of Hartford goal on municipal projects.

Minority/Women Business Enterprises Status



Note*: Statistics are based on all Consent Order related projects under construction, beginning in July 2023.
MBE and WBE targets based on CT DEEP Clean Water Fund (CWF) goals

Closing Remarks

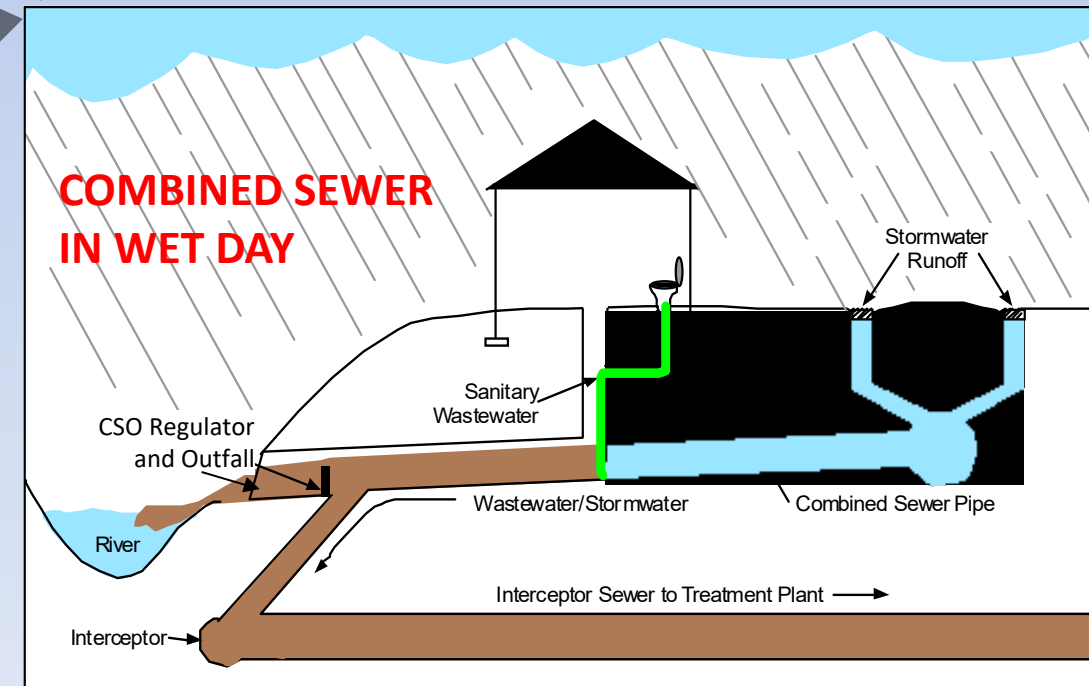
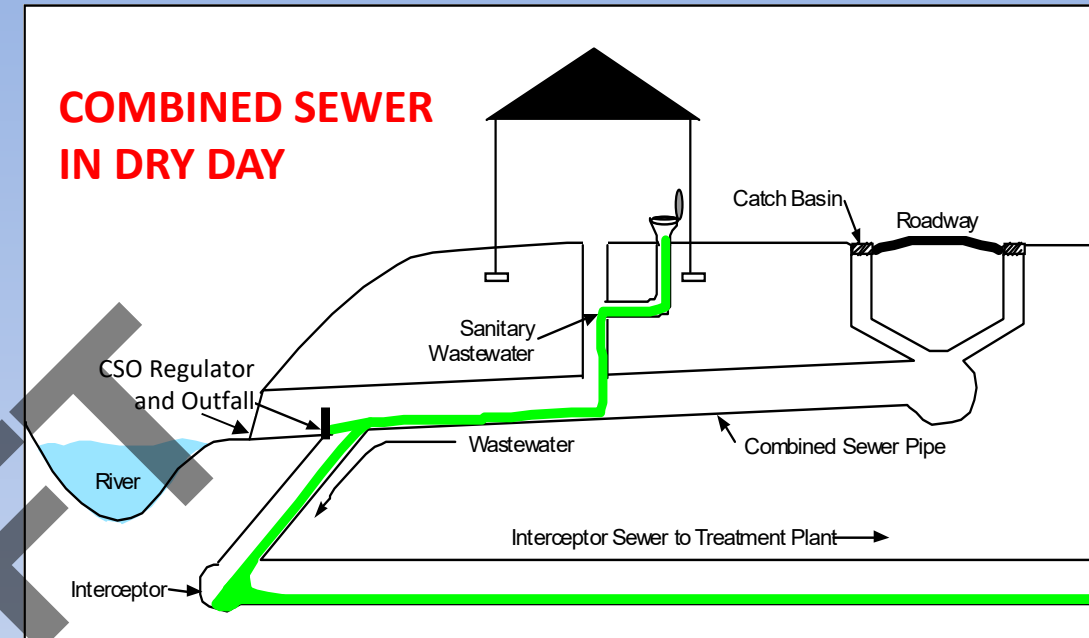
- Many ongoing initiatives and projects
- Many ways to **stay informed**
 - Visit - <https://themdc.org/north-hartford-sewer-improvement-projects/>
 - Via your local NRZ
- Quarterly Consent Order Meetings
 - Second Thursday of the months of March, June, September, and December
 - Each meeting will also be virtual
- Comments and Questions

List of Acronyms

- AFSCME = American Federation of State, County and Municipal Employees
- AHNA = Asylum Hill Neighborhood Association
- BWV = Backwater Valve
- COH = City of Hartford
- CSO = Combined Sewer Overflow
- CT DEEP = Connecticut Department of Energy and Environmental Protection
- CWF = Clean Water Fund
- CWPC = Clean Water Project Charge
- DAS = Department of Administrative Services
- DBE = Disadvantaged Business Enterprise
- EPA = Environmental Protection Agency
- GHAAA = Greater Hartford African American Alliance
- GHFC = Greater Hartford Flood Commission
- IP/CSO LTCP = Integrated Plan/CSO Long-Term Control Plan
- MBE = Minority-Owned Business Enterprise
- MCC = Minority Construction Council
- MG = Million Gallons
- NAWIC = National Association of Women in Construction
- NBPR = North Branch Park River
- NGOs = Non-Government Organizations
- NRZs = Neighborhood Revitalization Zones
- PPID = Private Property Inflow Disconnect
- Q3 = Quarter 3 (ex. period from July 1, 2023 to September 30, 2023)
- RFP = Request for Proposal
- RFQ = Request for Qualifications
- ROW = right-of-way
- SBE = Small Business Enterprise
- SHCST = South Hartford Conveyance & Storage Tunnel
- SSES = Sanitary Sewer Evaluation Survey
- SSO = Sanitary Sewer Overflow
- WBE = Women-Owned Business Enterprise

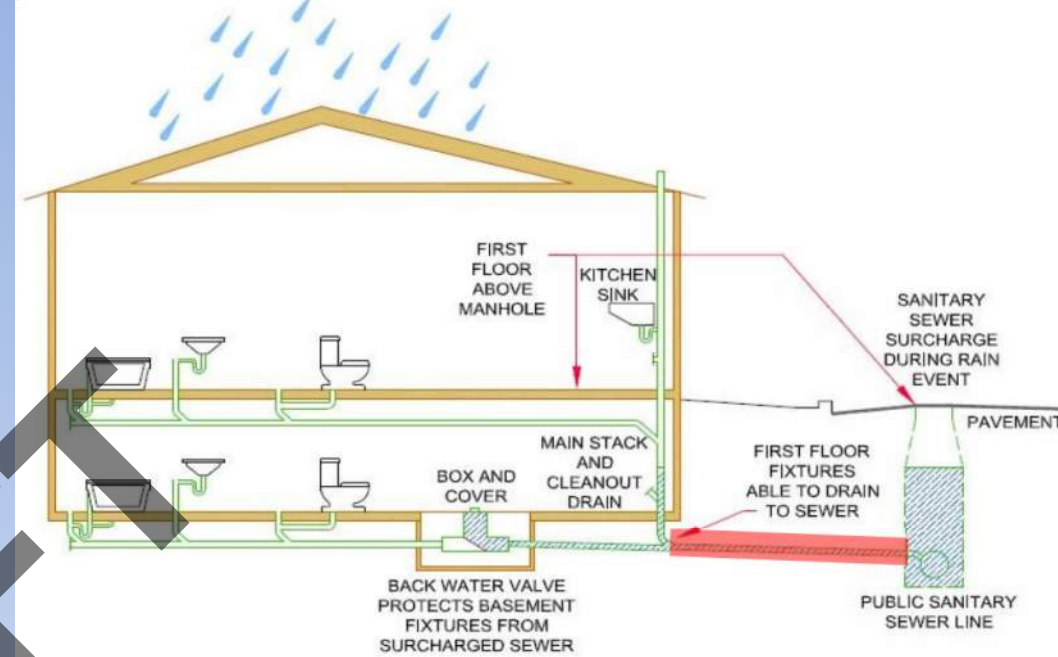
Common Terms & Definitions

- **Separate/sanitary sewer**
 - pipe designed to only convey wastewater
 - how sewers are built now, all member towns except Hartford
- **Storm drain**
 - pipe designed to convey only stormwater
- **Combined sewer**
 - pipe designed to convey **both** sanitary and stormwater (including catch basins)
 - How sewers were built 100 years ago
 - Issues with Combined Sewers:
 - **Dry Day:** No issues, enough capacity for household sewage (toilet, showers, etc)
 - **Wet Day:** Stormwater enters sewer (example: through catch basins). The combined sewer becomes too full, causing overflows (CSOs) into streams/rivers



Common Terms & Definitions

- **Lateral/House Connections**
 - Pipe (shown in red) connecting the wastewater from homes to the District's sewer main
- **Combined Sewer Overflow (CSO)**
 - condition that occurs when wet weather flows in a combined sewer system exceed the treatment capacity at the plant and/or in the pipes, causing it to discharge flow into typically a storm drain or river (via a CSO regulator and outfall)
 - Example: "N-2" and "N-4"
- **Sanitary Sewer Overflow (SSO)**
 - a condition that may occur due to blockage/clog in a pipe, broken infrastructure, or due to significant rainfall



Common Terms & Definitions

- **1-Year Design Storm**
 - The historic event from October 1951 with a 24-hour depth of 2.4 inches and an average recurrence interval (ARI) of 1 year. This design storm has been used to control all CSO regulators except those that discharge to the North Branch Park River or Wethersfield Cove.
- **Typical Year**
 - The typical year evaluated had 42-inches of rain. The selection was agreed to by CT DEEP and followed the approach described by the USEPA's "Combined Sewer Overflows Guidance for Monitoring and Modeling" (USEPA, 1999), which includes analyzing individual storm event return periods, annual precipitation, and simulated CSO volume for each year in the historic record to find a representative typical year.
- **Elimination Storm**
 - Tropical Storm Tammy was adopted for CSO elimination alternatives analysis through correspondence with CT DEEP during the 2012/2014 LTCP Update. The event referred to in the LTCP as Tammy was a combination of the remnants of that storm in combination with Subtropical Depression Twenty-Two. From October 7 to 15, 2005, 13 inches of rain fell at Bradley Airport. The heaviest rain fell on the 8th and the 9th and from the 14th to the 15th, with 5.0 and 5.8 inches falling over respective 24-hour periods