

MDC



The Metropolitan District

water supply • environmental services • geographic information

**Integrated Plan Implementation
Consent Order Annual Report Public Meeting
(Q4 2024 October 1 to December 31, 2024 and 2024 Annual Summary)
Thursday, March 13, 2025 6:00 PM
555 Main Street, Hartford, CT**

Dial in #: 415-655-0001; Access Code: 2305 280 6006#

[Meeting Video Link](#)

AGENDA

1. Welcoming Remarks –

2. Introductions

3. Meeting Purpose

- To provide an annual and quarterly update on MDC's Integrated Plan, with current focus on North Hartford

4. Presentation

- Update on Consent Order projects completed and under construction
- Schedule for Consent Order projects under construction or yet to start construction
- Status of use of minority and disadvantaged business enterprises on its Consent Order projects

5. Public Comments and Questions



Integrated Plan Implementation Quarterly Report

Q4 2024 (October 1 to December 31) and 2024 Annual Summary

March 13, 2025



Meeting Agenda

- Welcoming Remarks
- Introductions
- Quarterly and annual update on MDC's Integrated Plan, with current focus on North Hartford
 - Quarterly Report from October 1, 2024 to December 31, 2024 (Q4 2024) and Annual Report of 2024 (January 1, 2024 to December 31, 2024)
 - An update on projects completed and under construction
 - A schedule for projects under construction or yet to start construction
 - A status of use of minority and disadvantaged business enterprises, including efforts and success at recruiting labor and contractors from the area where projects are or will be occurring
 - Next Quarterly Report Meeting = June 12, 2025 (Q1 2025)
- Public Comments and Questions

Presentation Outline

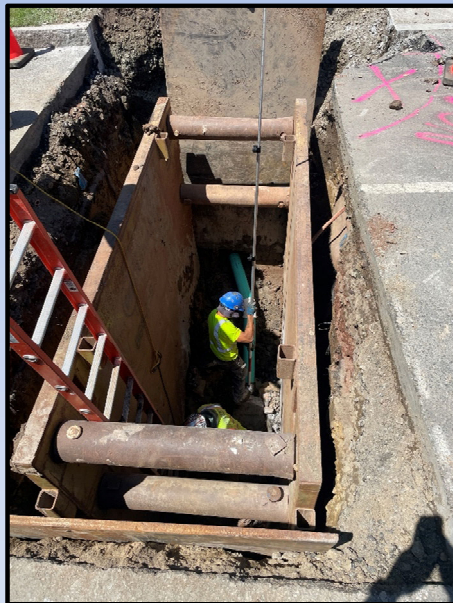
- Background on focus area (North Hartford)
- Quarterly and Annual Consent Order (CO) reporting requirements
- Overview of CO projects in:
 - North Hartford
 - Hartford (outside of North Hartford)
 - Outside Hartford
- Update on key performance indicators
- MDC's recruiting efforts for Small, Minority, Women and Disadvantaged Businesses (SBE, MBE, WBE, DBE) and Local Labor
- Closing remarks

The North Hartford Area

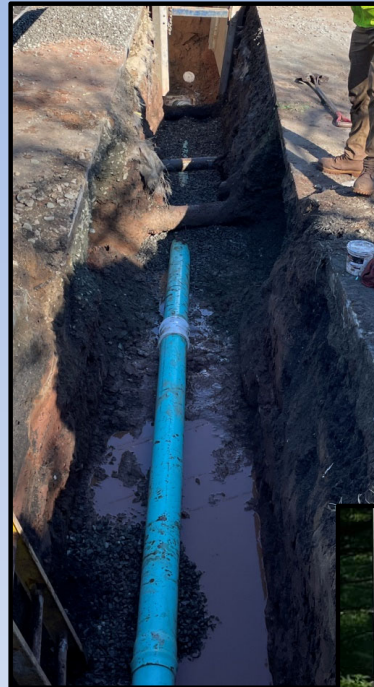
MDC listened to the North Hartford Community and responded with an altered program that provides immediate community benefit



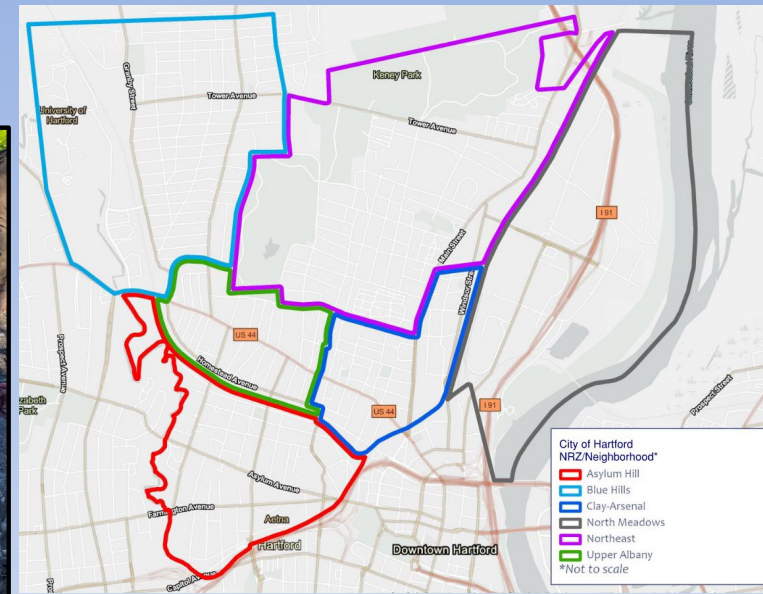
Point repair
(Project: Sewer & House Connection Rehabilitation in North Branch Park River Area)



Lateral repair
(Project: Sewer & House Connection Rehabilitation in North Branch Park River Area)



New storm lateral
(Project: Woodstock and Branford Streets Expedited Sewer Separation)



Consent Order Modification Reporting Requirements

Quarterly and Annual Reporting Required under Consent Order Modification

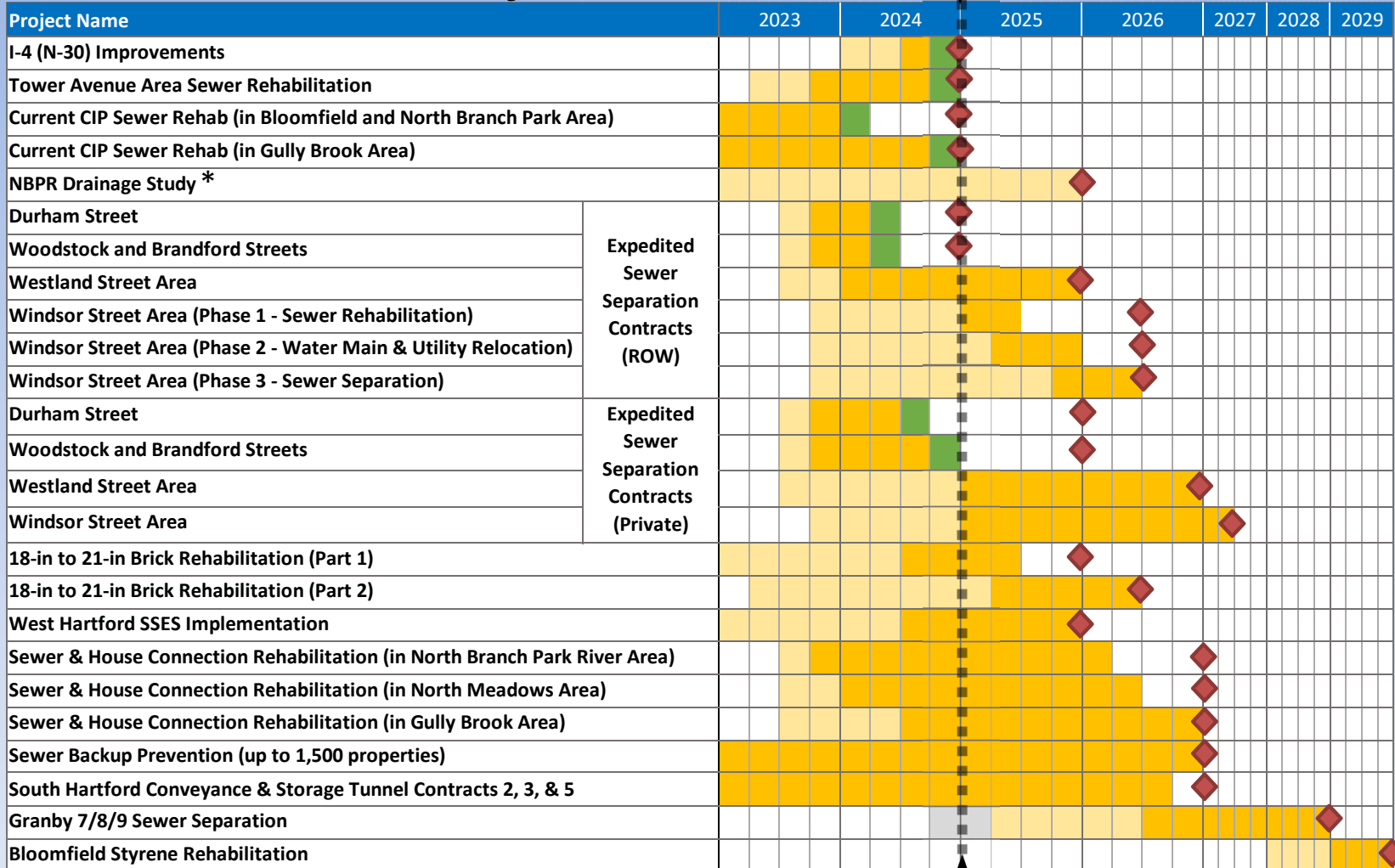
- 1) An update on projects completed and under construction
- 2) A schedule for projects under construction or yet to start construction
- 3) A status of use of minority and disadvantaged business enterprises, including efforts and success at recruiting labor and contractors from the area where projects are or will be occurring
- 4) Other items as requested by Commissioner
 - *None received this quarter*
- 5) Draft Report posted to MDC website 30 days prior to meeting, with comments from CT DEEP and ICA incorporated as needed**

Other Items Voluntarily Included by the MDC

- MDC committed to 30% Hartford based workforce for North Hartford work associated with Consent Order modification
 - 30% based on similar City of Hartford goal on municipal projects

Consent Order Projects & Timeline

*To view bids, please visit: <https://themdc.org/ebid>



◆ Consent Order Deadline

* Partial Draft submitted in 2024

Preliminary Design
 Final Design
 Construction
 Completed

Expedited Sewer Separation Program – Example 2024 Construction Progress Photos



Durham Street Sewer Separation Project

Project Overview

The Durham Street Sewer Separation Project construction began in July 2023, with on-call contracting process and included the installation of new storm drains and stub connections, along with the lining of sewer mains and installing new manholes and catch basins. The project was completed in July 2024 (a year and a half ahead of schedule) and is part of MDC's Integrated Plan with CT DEEP, an effort to improve the efficiency and reliability of the sewer system in the area.

Private Property Work

Sewer Backup Prevention: Installation of backwater valves, check valves, and sump pump

Sewer Inflow Separation: Lining sewer laterals and adding gutters and yard drains to manage water flow and prevent sewer system overload.

Project Outreach

Project outreach by MDC staff and contractors was key to keeping residents informed throughout the construction process for both public right of way and private property improvements. This constant communication was important not just for the construction improvements but also the restoration of the road, sidewalks, lawns and tree planting.

\$1.9M in sewer improvements

\$276K additional water main improvements

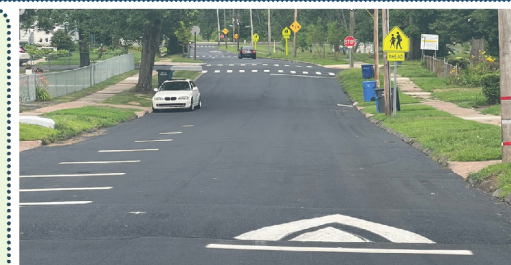
38% of workforce hours were Hartford residents



Work Completed

- 1234 feet of main line sewer lined
- 21 sewer laterals/private house connections lined
- 1401 feet of main line storm installed
- 730 feet of new water main installed

- 16 new water services installed
- 21 basement assessments completed
- 18 backwater valves installed
- 16 private property storm laterals installed



Lateral Repair
(Project: Sewer & House Connection Rehabilitation in North Meadows Area)



New Storm Lateral
(Project: Woodstock and Branford Streets Expedited Sewer Separation)

Expedited Sewer Separation Program - Example Construction Progress Photos



Project: Woodstock and Branford Streets Expedited Sewer Separation

Prior to improvements: Roof leader from gutters enters basement and connects to sewer

After improvements: Roof leader from gutters diverted to new storm lateral and new sump pump to pump internal/foundation drains to new storm lateral



Project: Woodstock and Branford Streets Expedited Sewer Separation

Example of new storm lateral installed for roof leaders and sump pump connection

Consent Order Projects: NRZ Impact and CSO Reduction


Project Name		Neighborhood Revitalization Zone and/or Neighborhood	1 Yr CSO Reduction (MG)	Typical Year CSO Reduction (MG)
Current CIP Sewer Rehab (in Bloomfield and North Branch Park Area)		Blue Hills, Clay Arsenal, South Downtown, South Behind the Rocks	0.2	2.4
NBPR Drainage Study		Blue Hills, West End, Asylum Hill	*	*
Sewer & House Connection Rehabilitation (in North Branch Park River Area)		Blue Hills	0.9	11.5
Granby 7 Sewer Separation		Blue Hills	0.4	3.8
Granby 8 Sewer Separation		Blue Hills	0.3	3.4
Granby 9 Sewer Separation		Blue Hills	0.4	3.6
Durham Street	Expedited Sewer Separation Contracts (ROW)	Blue Hills	0.1	1.2
Woodstock and Brandford Streets		Blue Hills	0.1	1.4
Westland Street Area		Northeast	0.4***	4.5***
Windsor Street Area		North Meadows	1.1	14.3
Expedited Sewer Separation Contracts (Private Property Work)		Blue Hills, Northeast, North Meadows	**	**
Sewer & House Connection Rehabilitation (in Gully Brook Area)		Northeast	0.9	11.0
Tower Avenue Area Sewer Rehabilitation		Northeast	0.2	3.0
Sewer & House Connection Rehabilitation (in North Meadows Area)		North Meadows	1.0	28.4
Current CIP Sewer Rehab (in Gully Brook Area)		Asylum Hill, Clay Arsenal, South Behind the Rocks	1.3	10.0
18-in to 21-in Brick Rehabilitation (Part 1 and Part 2)		Asylum Hill, Clay Arsenal, South End, Marg	0.8	7.0
I-4 (N-30) Improvements		West End	<0.1	<0.1
Sewer Backup Prevention (up to 1,500 properties)		All North Hartford NRZs/Neighborhoods	**	**
South Hartford Conveyance & Storage Tunnel Contracts 2, 3, & 5		South End, Marg, South Behind the Rocks	3.8	21.9
West Hartford SSES Implementation		N/A	0.2	1.2
Bloomfield Styrene Rehabilitation		N/A	<0.1	<0.1

*CSO Reductions for the NBPR Drainage Study included in individual Granby Separation Contracts

** CSO Reductions associated with Private Property Improvements included in associated ROW project reductions

*** Values were updated based on revised runs to include additional separation

COMPLETED REDUCTION TO DATE	
1.9 MG (15%)	18.0 MG (14%)

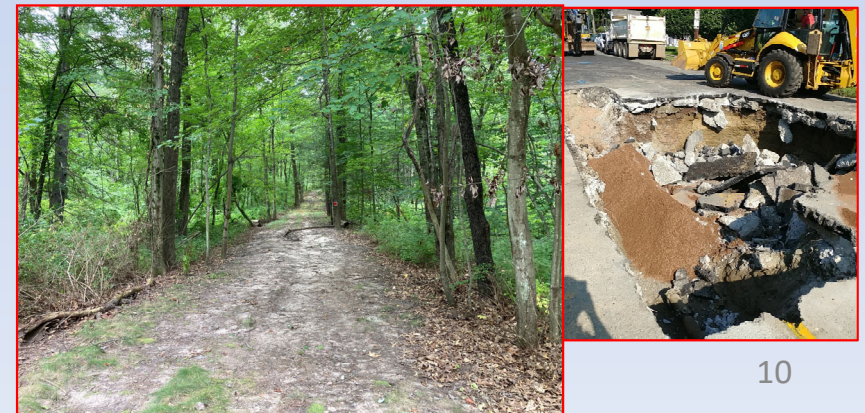
 Completed

Additional Sewer Improvement Projects

Non-Consent Order (2019 through Q4 2024)

- Clearing Sewer Easements on Private Property
 - Completed = Bloomfield, Rocky Hill, East Hartford, Windsor
 - In progress = Newington
 - Other Member Towns to follow
- Easement Sewer Rehabilitation
 - Bloomfield Phase 1 completed, subsequent phases in design
 - Other Member Towns to be evaluated/scheduled
- On-Call Sewer Rehabilitation/Repair
 - 230,000 feet sewer main rehabilitated from 2019 to 2023; 21,000 feet of sewer main in 2024
 - Sewer main and laterals rehabilitated in Member Towns
 - In 2024 Q4: work performed in Hartford, East Hartford
 - In all of 2024: work performed in every member Town
 - Asset management/paving program coordination

Town	Easement Clearing Length (feet)
Bloomfield	98,000 (completed)
Rocky Hill	59,100 (completed)
East Hartford	66,200 (completed)
Windsor	132,300 (completed)
Newington	51,300 (in progress)
Hartford	55,800 (2025-2027)
West Hartford	54,300 (2025-2027)
Wethersfield	59,200 (2025)
Total (feet)	576,200
Total (miles)	109



Consent Order Projects (as of 12/31/24): North Hartford

Sewer & House Connection Rehabilitation (in North Branch Park River Area):

Rehabilitation of sewer mains and house connections upstream of CSOs N-2 and N-4

Granby 7/8/9 Sewer Separation:

Sewer separation with new storm drains and private property disconnections (final location based on North Branch Park River Study)

Tower Avenue Area Sewer Rehabilitation:

Rehabilitation of sewer mains and house connections upstream of CSOs NM-2, NM-3, and NM-4

Expedited Sewer Separation Contracts (ROW):

Construction of storm drains in streets
(Additional separation added per MDC review)

Sewer & House Connection Rehabilitation (in North Meadows Area):

Rehabilitation of sewer mains and house connections upstream of CSOs NM-5, NM-6, and NM-7

Expedited Sewer Separation Contracts (Private):

Private property storm separation (to follow ROW Separation Contracts)

North Branch Park River Drainage Study:

Evaluating the North Branch Park River and surrounding sewer and drainage infrastructure in support of future river improvements and sewer separation

Sewer & House Connection Rehabilitation (in Gully Brook Area):

Rehabilitation of sewer mains and house connections upstream of CSO G-13W

- Preliminary Design
- Final Design
- Completed
- Construction

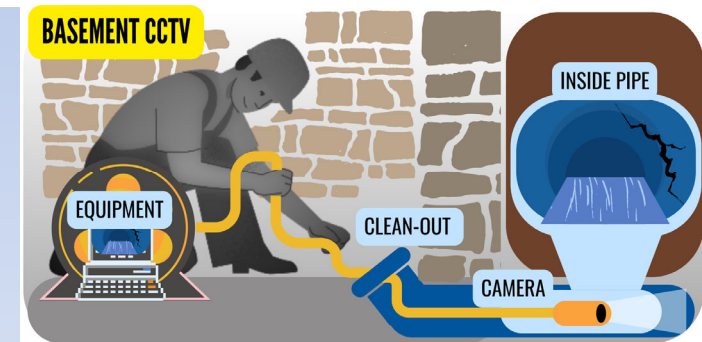
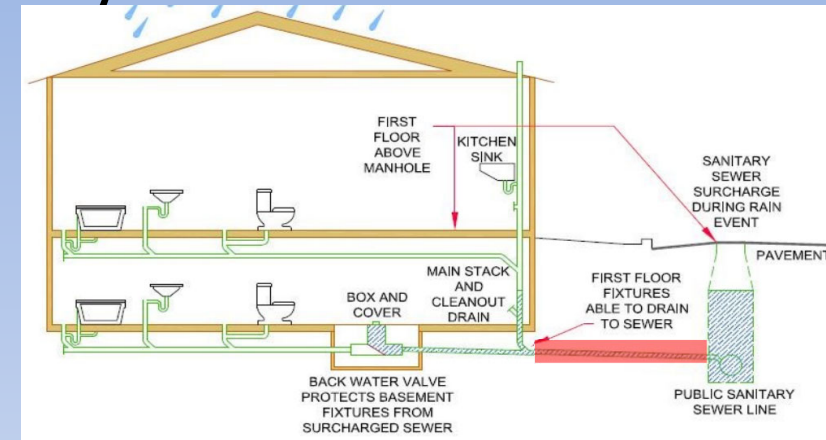
Consent Order Projects: Private Property Benefit

Sewer Backup Prevention Program (“Backwater Valve Program”)

- Separates homes’ foundation drains (via installing sump pumps) and gutters from the sewer system, reducing surcharging during wet weather
- Install backwater valves & sump pumps, etc. to prevent basement backups, **District-wide; at no cost** to property owner.
- \$12.2 million (up to 1,500 homes) for North Hartford properties (Consent Order project)
- <https://themdc.org/utility-services/backwater-valve-program/>
- To **schedule a free assessment** of your property, contact MDC Utility Services at **(860) 278-7850, ext. 3123**

Sewer House Connection Program – voluntarily included by MDC

- MDC Board initiative to provide same benefit **District-wide** that was being offered to North Hartford residents
- Emergency and non-emergency maintenance and inspection services **at no cost** to the property owner
- Provides funding for renewal of the house connection, if needed
- <https://themdc.org/utility-services/sewer-house-connection-program/>



Contractors for both programs are anticipated to be all SBE (Small Business Enterprise)

Example Sewer Backup Prevention Program Improvements



Previous washing line

New washing machine line protected by check valve

New cleanout

Previous BWV pit

New sump pump in old BWV pit

Prior to improvements:

Washing machine drain line and old BWV pit with no protection



After improvements:

Check valve installed to protect washing machine; new cleanout installed; new sump pump to replace the old BWV pit

Example Sewer Backup Prevention Program Improvements



New double bay plastic sink and drain piping (new check valve also installed not in photo)

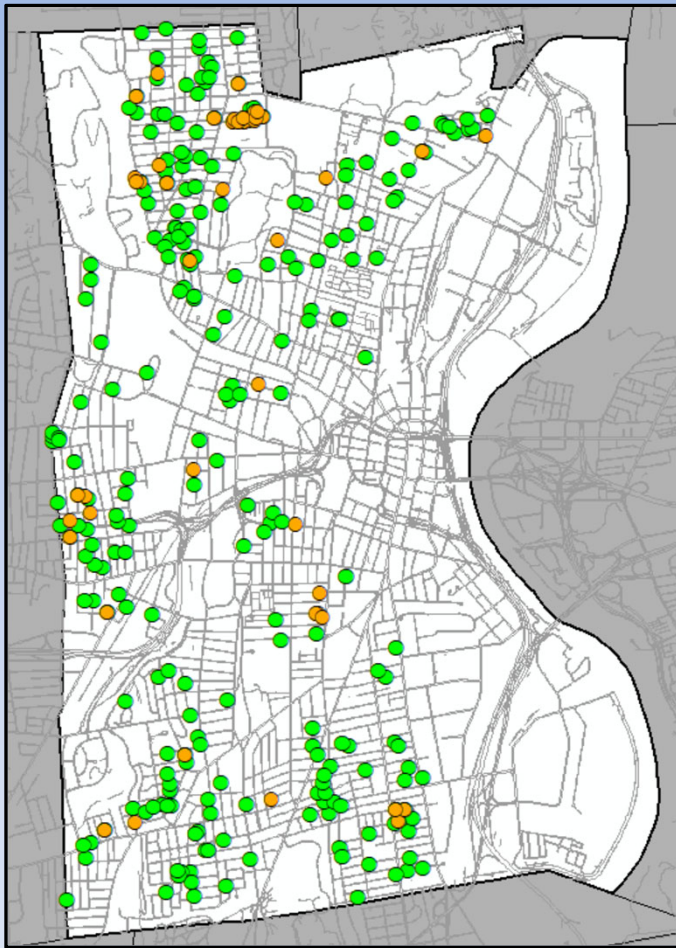


New sump pump (with battery backup) and new BWV inside irrigation style box





Sump pump discharge to lawn

Sewer Backup Prevention and Sewer House Connection Programs

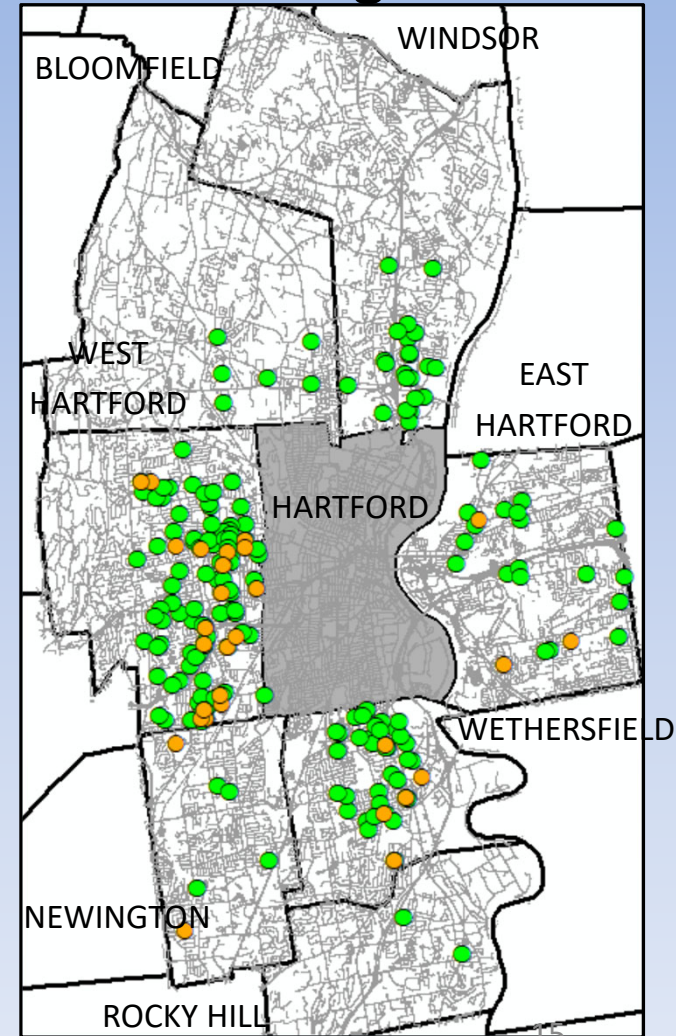


Hartford

2024 Q4 Properties w/ Completed Improvements

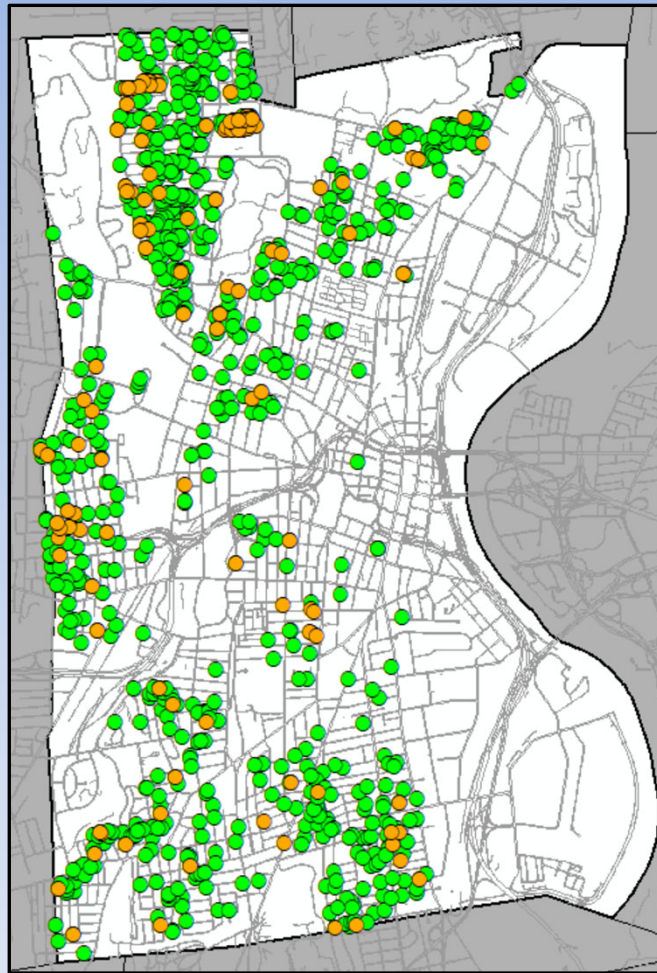
-  444 Sewer Backup Prevention Properties
-  86 Sewer House Connection Properties

(530 Total Properties)



Outside of Hartford

Sewer Backup Prevention and Sewer House Connection Programs

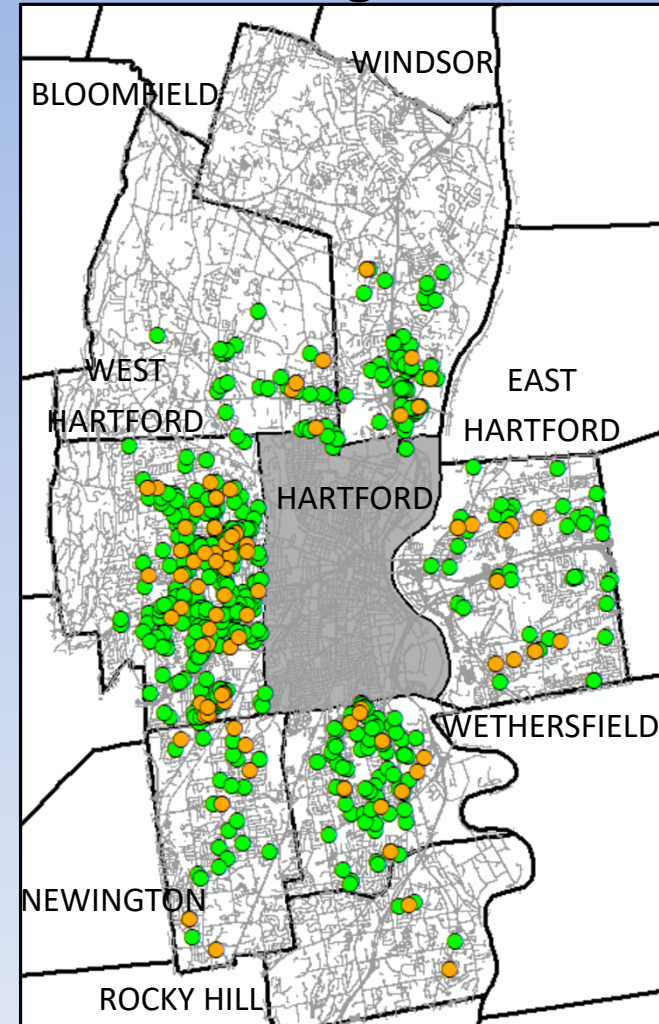


Hartford

2024 Total Properties w/ Completed Improvements

- 1,415 Sewer Backup Prevention Properties
- 267 Sewer House Connection Properties

(1,682 Total Properties)

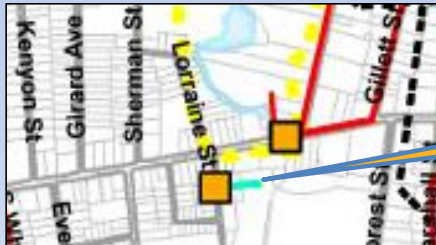


Outside of Hartford

Consent Order Projects (as of 12/31/24): Outside of North Hartford

Current CIP Sewer Rehab (in Gully Brook Area):
Rehabilitation of sewer mains and house connections

Current CIP Sewer Rehab (in Bloomfield and North Branch Park River):
Rehabilitation of sewer mains and house connections

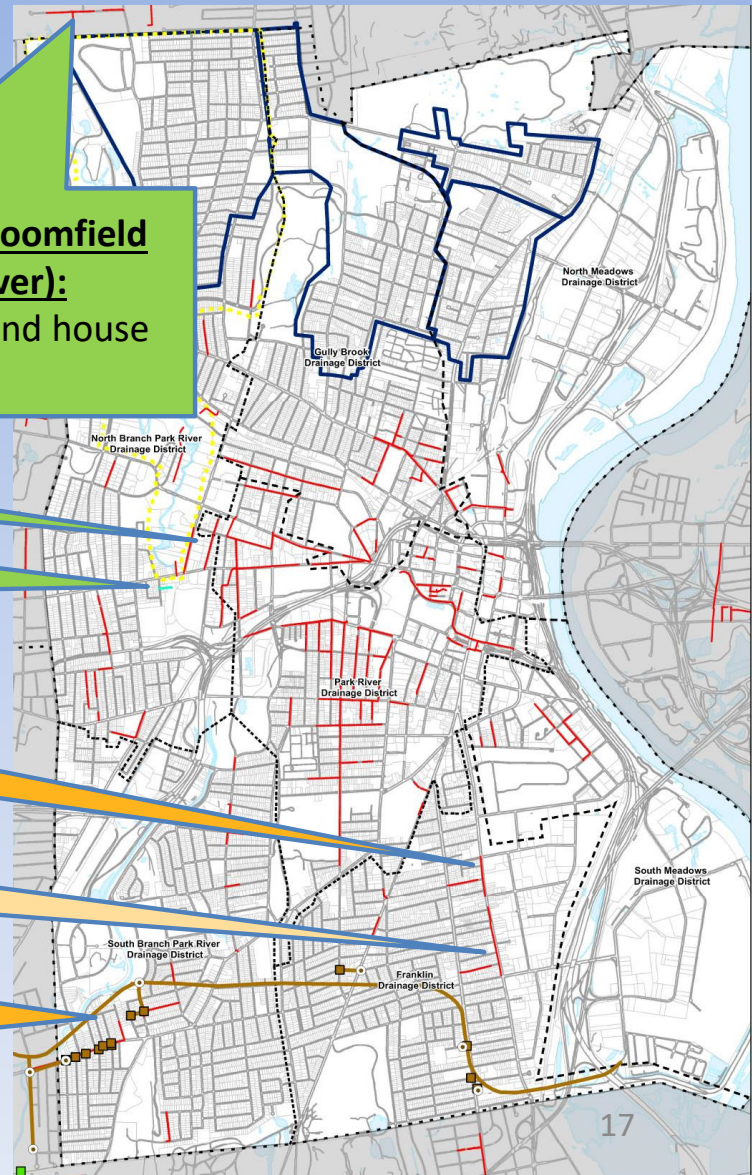


I-4 (N-30) Improvements:
Rehabilitation of sewer mains downstream of CSO I-4 (N-30)

18-in to 21-in Brick Rehabilitation (Part 1)
Rehabilitation of brick sewer mains

18-in to 21-in Brick Rehabilitation (Part 2)
Rehabilitation of brick sewer mains

South Hartford Conveyance & Storage Tunnel (SHCST) Contracts 2, 3, & 5:
Construction of the SHCST, drop shafts, consolidation conduits and dewatering PS



- Final Design
- Construction
- Completed
- Preliminary Design
- Sewer Rehab

Consent Order Projects (as of 12/31/24): Outside of Hartford

Bloomfield Styrene Rehabilitation:

Rehabilitation of styrene rubber sewer mains

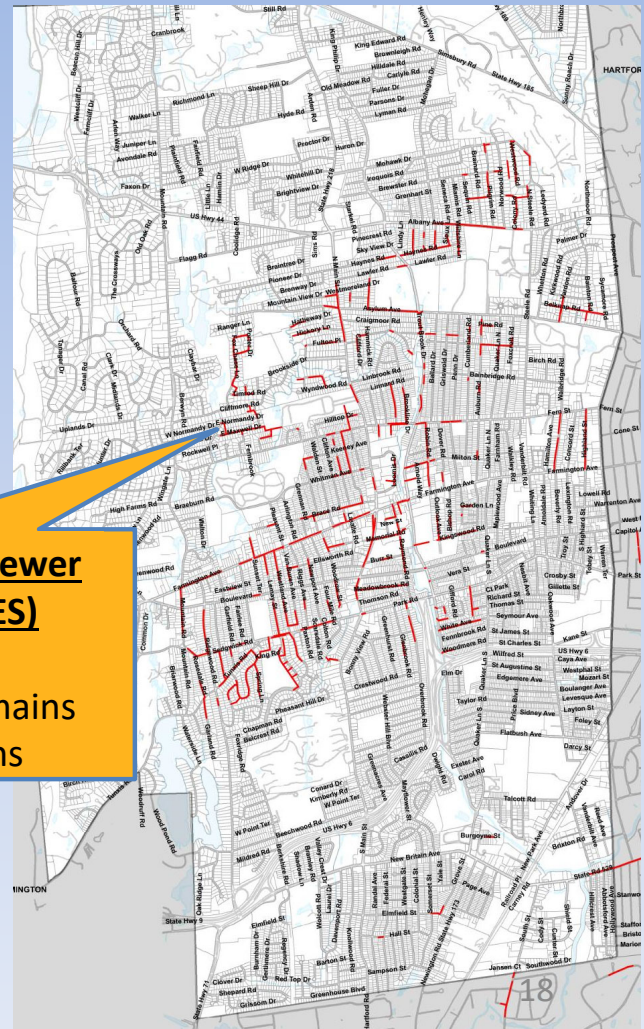
Bloomfield and North Branch Park River Area Sewer Rehabilitation:

Rehabilitation of sewer mains and house connections

West Hartford Sanitary Sewer Evaluation Survey (SSES) Implementation:

Rehabilitation of sewer mains and house connections

- Not Yet Started
- Preliminary Design
- Final Design
- Construction
- Completed
- Sewer Rehab



North Branch Park River Drainage Study Update

- **Update for 2024 Q4**
 - CDM Smith presented preliminary findings to MDC, City of Hartford (COH), and Greater Hartford Flood Commission (GHFC) in 2024 Q2
 - Draft report submitted to MDC and COH in Q3 for review
 - Report to be finalized after review, further decisions from COH pending
 - Proceeding with sewer separation conceptual design – drafts ready end of Q1 of 2025
- **Importance of Study**
 - NBPR has sediment buildup (i.e., from streets) and blockages (i.e., from downed trees); contributes to street and localized flooding and backups
 - Study needed to determine
 - Required flood control and stream improvements (COH priority)
 - Approach to remove stormwater from sewers; eliminate CSOs (MDC priority)
 - Short term improvements performed to date
 - City cleaned Park River Conduit inlet
 - Durham Street sewer separation in ROW complete, private property separation completed end of Q3 2024



Status of Projects: Key Performance Indicators (District Wide*)

Key Performance Indicators	Q4 2024 (Oct 1 through Dec 31)	2024 Annual (Jan1 through Dec 31)	Total To Date (since 2019)
Storm drains or sanitary sewers installed (feet)	1,384'	1,485'	33,116'
Sewer mains rehabilitated (feet) (miles)	11,394' (2.2)	69,743' (13.2)	393,516' (74.5)
Sewer laterals inspected (# of properties)	1,022	5,054	8,246
Sewer laterals renewed (# of properties) (feet)	430 (13,288')	2,099 (68,543')	2,480 (80,783')
Backwater valve/surcharge protection (# of properties)	204	609	1,626
Private property internal disconnects (# of properties)	35	151	262
Sewer or storm laterals installed via separation (to property line) (# of properties)	20	115	115
Private property separation completed (# of properties)	0	50	50

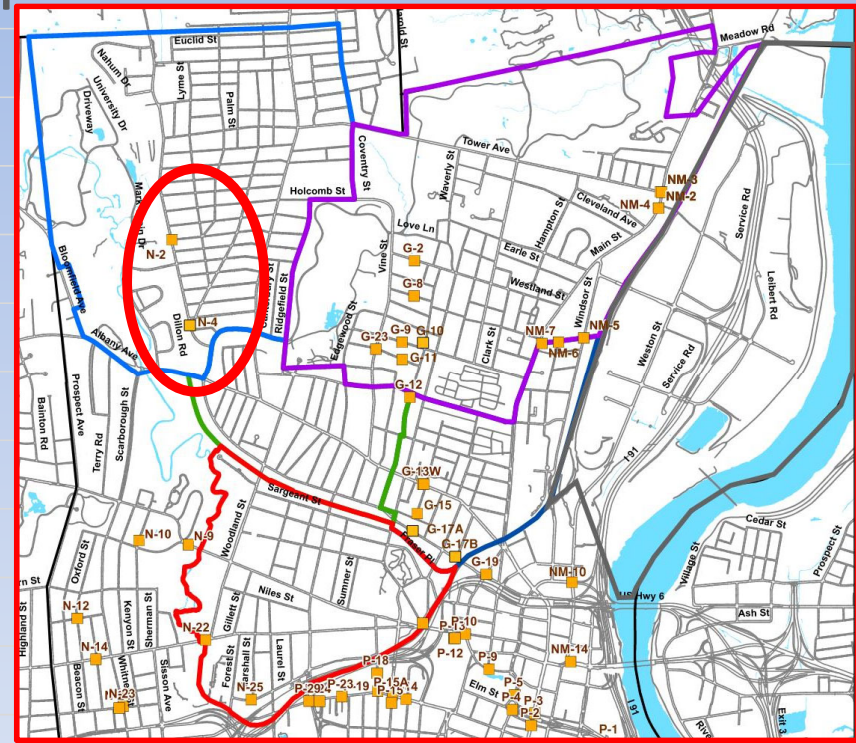
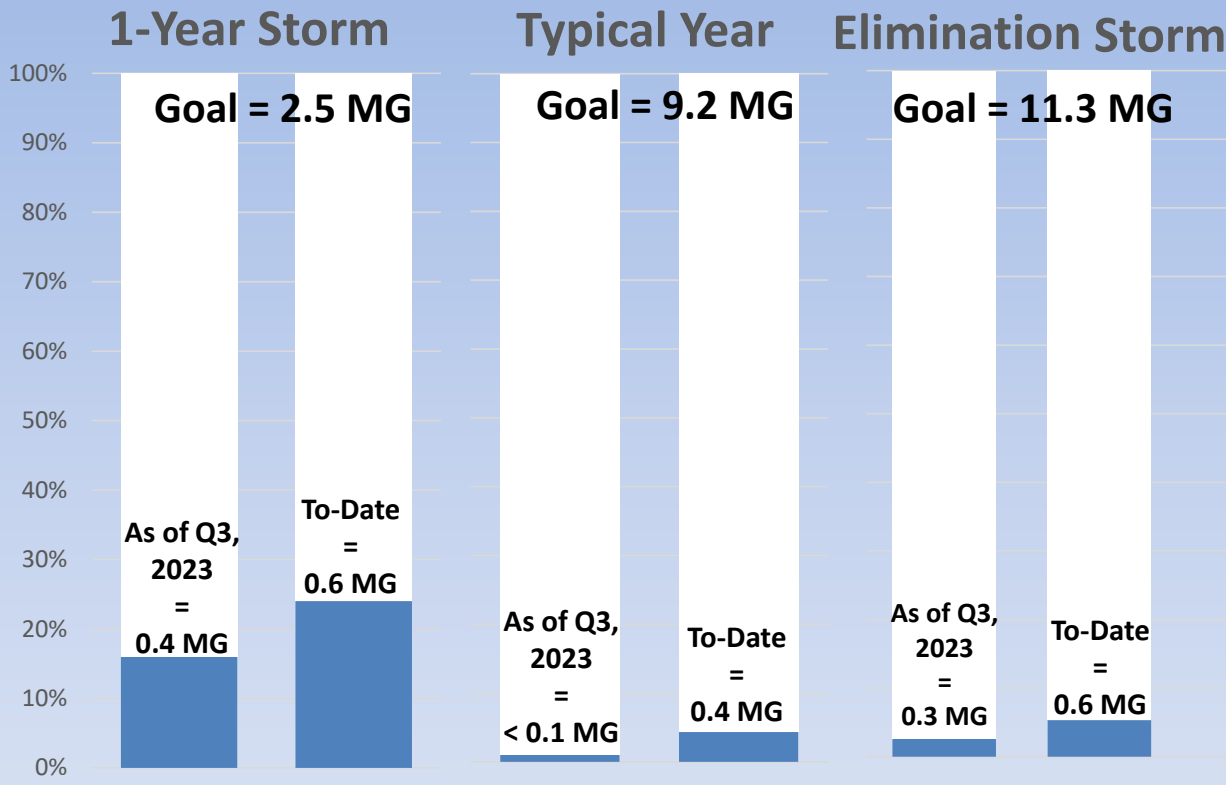
*Work in all Member Towns, including North Hartford

Status of Projects: Key Performance Indicators (North Hartford)

Key Performance Indicators	Q4 2024 (Oct 1 through Dec 31)	2024 Annual (Jan 1 through Dec 31)	Total To Date (since 2019)
Storm drains or sanitary sewers installed (feet)	288'	389'	9,520'
Sewer mains rehabilitated (feet) (miles)	2,502' (0.5)	38,429' (7.3)	76,298' (14.5)*
Sewer laterals inspected (# of properties)	346	2,246	2,669
Sewer laterals renewed (# of properties) (feet)	293 (10,046')	718 (26,426')	819 (30,991')
Backwater valve/surcharge protection (# of properties)	56	203	549
Private property internal disconnects (# of properties)	9	42	99
Sewer or storm laterals installed via separation (to property line) (# of properties)	20	115	115
Private property separation completed (# of properties)	0	50	50

*Note that there is approximately 80 miles of sewer in North Hartford; therefore this is approximately 18% of the system²¹

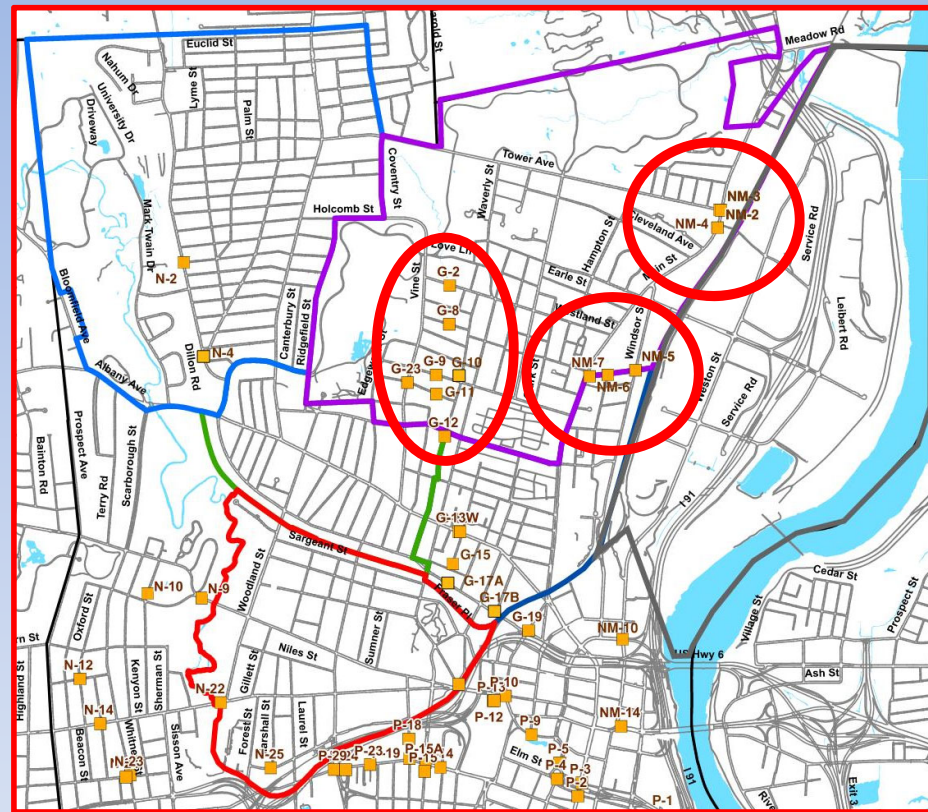
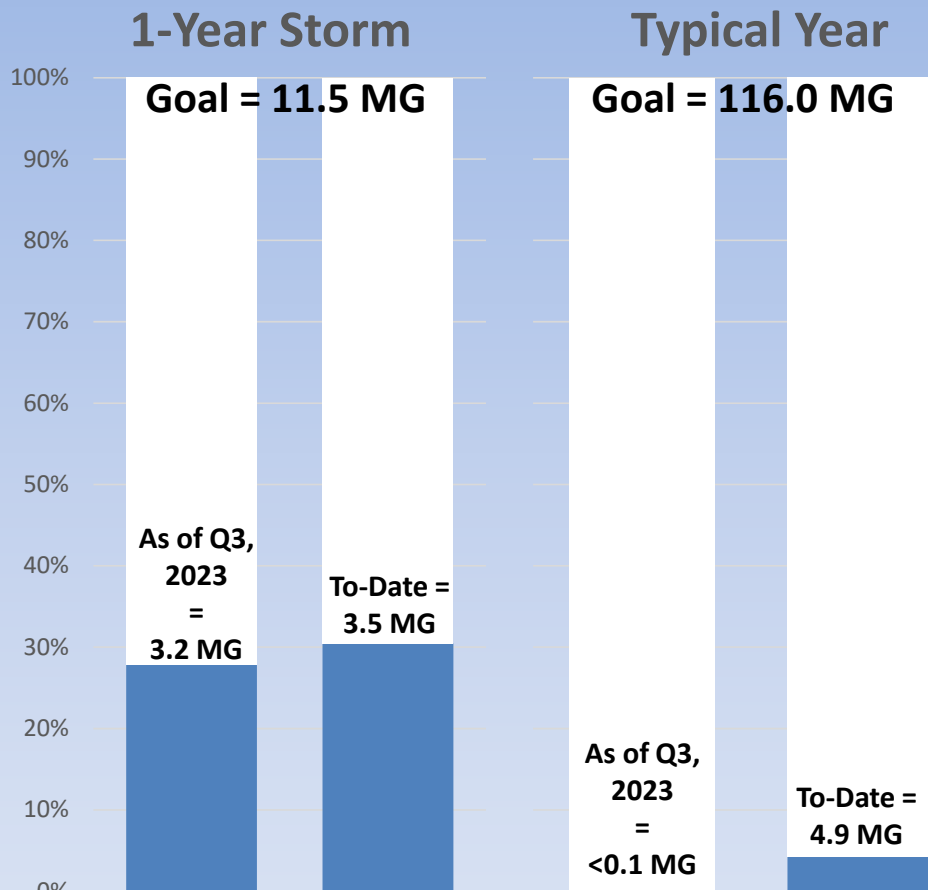
Status of Projects: N-2 and N-4 CSO Reduction



Notes:

1. Per the Consent Order, combined sewer overflows (CSOs) from N-2 and N-4 must be eliminated. Million gallon (MG) goals are per 2018 Integrated Plan.
2. Q3 2023 represents the start of work completed under current Consent Order

Status of Projects: Gully Brook & North Meadows CSO Reduction



Notes:

1. Per the Consent Order, combined sewer overflows (CSOs) Gully Brook and North Meadows must be controlled to the 1-year storm. Goal represents the total million gallons (MG) of CSO that occurs in a 1-year storm and typical year.
2. Q3 2023 represents the start of work completed under current Consent Order

Community Outreach

Keeping people informed who live and work in the communities where construction is taking place is a critical component to the success of our projects.

- **Communication and Project Outreach**
 - On-going outreach is taking place for the House Connection (lateral lining) and Sewer Backup Prevention programs
 - Outreach is primarily conducted through mailings, door to door notifications and project meetings. Staff regularly attend local NRZ and Community Group Meetings as well.
 - View north Hartford projects and status: www.themdc.org
- **Outreach Office : 179 Barbour Street, Hartford**
 - The office is staffed Monday through Friday
(M, W, F, 9:00 -1:00, Tu, 1:00-4:00, Th, 1:00-5:00)
 - The public is welcome to stop in for information on projects, schedules, and related activities.
 - Those interested in training and employment are either directed to our Contractor Career Development and Compliance team or to visit our website to view and/or apply for current MDC Job Openings at www.themdc.org



MDC Year in Review: 2024 Recruitment for Small, Minority, Women and Disadvantaged Businesses (SBE, MBE, WBE, DBE)

- Certification & Registration Support
 - Established year-round DAS SBE/MBE/WBE and SAM.gov Registration Clinics.
 - Partnership with CT Apex Accelerator, NAWIC, and University of Hartford.
 - Hosted monthly sessions at MDC Training Facility.
 - Provided comprehensive support for new applications and recertifications.
- Contract Development Programs
 - Facilitated match-making for Backwater Valve and House Connection Programs - Prime Contractors with various Subcontractors.
 - Created joint venture opportunities with MDC Prime Contractors.
 - Established supplier partnerships with FW Webb.
 - Secured community banking support from HEDCO.
- Program Outcomes
 - Successfully onboarded new Hartford-based contractors.
 - Enhanced contractor capacity through mentorship.
 - Established uniform installation standards for all MDC customers.

CT Small/Minority Business Enterprise (S/MBE) Certification and SAM.gov Registration

2024 Hands-On Certification Clinics

S/MBE certification helps companies build revenue and find potential new customers through growth and marketing opportunities.

Brought to you by Industry Partners

Representatives from the state's Procurement Division and Connecticut APEX Accelerator will be onsite to review your applications for the S/MBE Certification and the SAM.gov registration (required for certification).

- Review your initial application
- Assist in updating your recertification application
- Answer your questions
- And more!

Location:
The Metropolitan District (MDC) Training Center
125 Maxim Road, Hartford, CT 06114

Time: 12:00 PM—2:00 PM

2024 Clinic Schedule: *Clinics are held on these Wednesdays:*

• January 17	• June 12
• February 28	• August 21
• March 20	• September 18
• April 17	• October 16
• May 15	• November 20

Pre-Registration is Required to Attend.

EMAIL: Kevin Nodwell at: kevin.nodwell@ct.gov.

Register to attend one clinic, or more, as needed. If you register and cannot make it, please cancel in advance.

LUNCH IS PROVIDED.
NO COST TO ATTEND.
SPACE IS LIMITED.

MDC Seeds of Partnership: 2024 Community Engagement Timeline

- Quarter 1 Highlights:
 - Synergy High School Interview and Resume Clinic (January 26th).
 - Ready CT & Community Partners 2024 Breakfast (January 31st).
 - HEZBA Annual Minority Business Luncheon (February 23rd).
 - Participated in weekly GHAAA Meetings to build community connections and foster local engagement.
- Quarter 2 Initiatives:
 - EGT Pathway Mini Career EXPO READY CT at Hartford Public High School (April 3rd)
 - Capital Community College Partnership Launch - Water/Wastewater Certification Program (April 25th).
 - Engaged Bulkeley High School students at E&M Community Day (May 7th).
 - Participated in Hartford Maker Space Job Fair with a skilled trades focus (June 7th).
 - Participated in Hartford Job Corps Career Fair & Trade Expo (June 26th).
- Quarter 3 Major Developments:
 - Introduced Lincoln Technical Institution Electrical Apprenticeship Program at MDC Water Pollution Facility (July 25th) – Tour inspired interest in Electrical Career.
 - Pratt & Whitney Partnership: 4th Annual NAF Executive Career Panel (August 1st).
 - Engaged with citizen at National Night Out Community Event (August 6th).
 - University of Hartford Partnership at Industry Appreciation Breakfast (August 12th).
 - Initiated Weaver High School Credential Program (August 13th).
 - EGT Industry Advisory Board Advancement (September 9th).
 - Merrimack Careers in STEM Partnership (September 25th).



MDC Seeds of Partnership: 2024 Program Achievements & Future Vision

- Established Partnerships:
 - Greater Hartford African American Alliance (GHAAA) - Weekly Meeting
 - Capital Community College - Water/Wastewater Certification
 - Lincoln Technical Institute - Electrical Apprenticeship Program
 - Pratt & Whitney and Ready CT- NAF Executive Career Panel and Classroom Enrichment
 - University of Hartford - Industry Integration
 - Weaver High School – Classroom Credential Program
 - CT DOL Apprenticeship Program at MDC
- Educational Impact:
 - Advanced 5 institutional training programs
 - Developed new certification pathways
 - Enhanced student career opportunities
 - Expanded STEM partnerships
- Quarter 4 Activities & Recognition:
 - NEWEA Workforce Development Conference Presentation
 - Institute of Asset Management Industry Showcase
 - Transformative Leadership Academy Capstone
 - Weaver High School Classroom Career Training
 - Hartford Public High School Practical Application for Science Students - workplace learning, classroom experience, and industry integration



MDC Seeds of Partnerships: 2024 Try-a-Trade Program Achievements

- Program Development:
 - MDC, CT Pre-Apprenticeship and CT DOT program expansion
 - Enhanced partnerships with trade unions
 - Implemented comprehensive training curriculum
- 2024 Program Outcomes:
 - MDC, CT Pre-Apprenticeship and CT DOT program expansion
 - 11 High School graduates earned certifications
 - 6 program graduates completed Work-Based Learning Program
 - 2 graduates transitioned to full-time MDC employment
 - Work-Based Learning placements across MDC divisions:
 - Utility Services
 - Field Operations
 - Central Equipment Maintenance
 - Water Treatment Facility
 - Wastewater Pollution Facility
- Future Growth Initiatives:
 - Graduate tracking/mentoring system implementation
 - Program enhancement for career pathway development



Try a TRADE

Now OFFERING FULL SCHOLARSHIPS FOR HIGH SCHOOL SENIORS

The best way to find out if you like something is to give it try!
Try a TRADE is a one week hands on program to do just that! Join us as we explore several different and profitable career paths through hands on learning! Students will have the opportunity to earn several certificates as well as gain knowledge and a better understanding of each trade and how to apply. Instruction may include Fall Protection, Ladder Safety, Flagger Certification, Work Zone Safety, Fire Extinguisher Safety, Silica Awareness, Concrete Work, OSHA-10 Certification, CPR/AED/First Aid Certification, Hoisting and Rigging, etc. Participants will receive Personal Protective Equipment including a Hard Hat, Safety Glasses, Work Gloves and PPE bag.

PROGRAM DETAILS
DATES: April 8th - 12th, 2024
TIME: 8:00 am - 2:30 pm
LOCATION: MDC Training Center
125 Maxim Road, Hartford, CT
COST: FULL Scholarship for those that are accepted into the program. Transportation may be included.
Space is limited - Apply Now! Scan the code or visit CTPAHSTP.com

SCAN ME

- Metropolitan District Commission
- Electricians Union
- Operating Engineers Union
- Iron Workers Union
- Carpenters Union
- Laborers Union

This program is funded by:

CONNECTICUT
Pre-Apprenticeship
High School Training Program

MDC
The Metropolitan District
Hartford, Connecticut

MDC Year in Review: 2024 Workforce Development & Training Outcomes

- Program Infrastructure Development:
 - MDC Work-Based Learning Program expansion across 5 divisions
 - CTECS Portal implementation for student engagement
 - Handshake Portal launch for Tri-state college recruitment
 - Mock interviews and screening processes established
- Training & Certification Pathways:
 - Water/Wastewater Treatment Operator certification with Sacramento University
 - Capital Workforce Partners sponsored programs - Veteran and Second Chance opportunities
 - Professional development tracks – OSHA 10, Flaggers Certifications etc.
- Employment Pipeline Success:
 - Summer internship placements
 - Division-specific training programs
 - Contractor development initiatives



MDC

CONTACT INFORMATION

- themdc.org/careers/
- 555 Main Street
Hartford, CT 06103
- (860) 278-7850 x3268
- @MDCWater
- facebook.com/themetropolitandistrict
- @MDC Hartford

The Metropolitan District's (MDC) Worked-based Learning Program is a paid internship program developed in partnership with various workforce development partners to help build a strong pipeline of knowledgeable workers into the water and wastewater industries.

PARTNERSHIPS

- CTECS
- Gateway Community College
- Urban League of Greater Hartford
- Greater Hartford African American Alliance

MDC WORK-BASED LEARNING PROGRAM

PAID INTERNSHIP OPPORTUNITIES

themdc.org

MDC Year in Review: 2024 Metrics on Transforming Local Labor

- Workforce Goal Achievement:
 - Exceeded **30% Hartford resident workforce goal** throughout 2024.
 - Total Annual Outcomes:
 - **16+ Hartford residents hired.**
 - **3 Hartford contractors** awarded MDC contracts.
 - **9 residents** transitioned into long-term training/employment programs.
 - Active placements from Work-Based Learning Program across **5 MDC divisions.**
- Educational Partnership Expansion:
 - New Programs Launched:
 - Weaver High School 19-week Credentialing Program.
 - Hartford Public High School EGT Pathways Program
 - Lincoln Tech Electrical Career Pipeline.
 - University of Hartford collaboration - Hursey Center for Advanced Engineering.
 - Engineering Co-op program with Tri-State colleges -Drexel and Merrimack.
 - Connecticut Community Colleges network.



MDC Year in Review: 2024 Metrics on Transforming Local Labor Continued....

- Program Recognition & Development:
 - Workforce development and DEI presentations at national conferences:
 - NEWEA Workforce Development Abstract | Institute of Asset Management Conference | WEF Conference DEI / Workforce Development | Transformative Water Leadership Academy.
 - New strategic partnerships established:
 - Pratt & Whitney and Ready CT
 - Blue Hills Civic Association (BHCA) and collaborative partners.
- Looking Ahead to 2025:
 - Establish MDC as a pipeline for the wastewater industry through:
 - MDC In-house Apprenticeship Program launch.
 - Strengthening workforce programs for member towns with a focus on underserved communities.
 - Try A Trade graduate tracking/mentoring system implementation.
 - Enhancing partnerships with local and national organizations.
 - Additional CTECS schools
 - Enhance industry collaborations

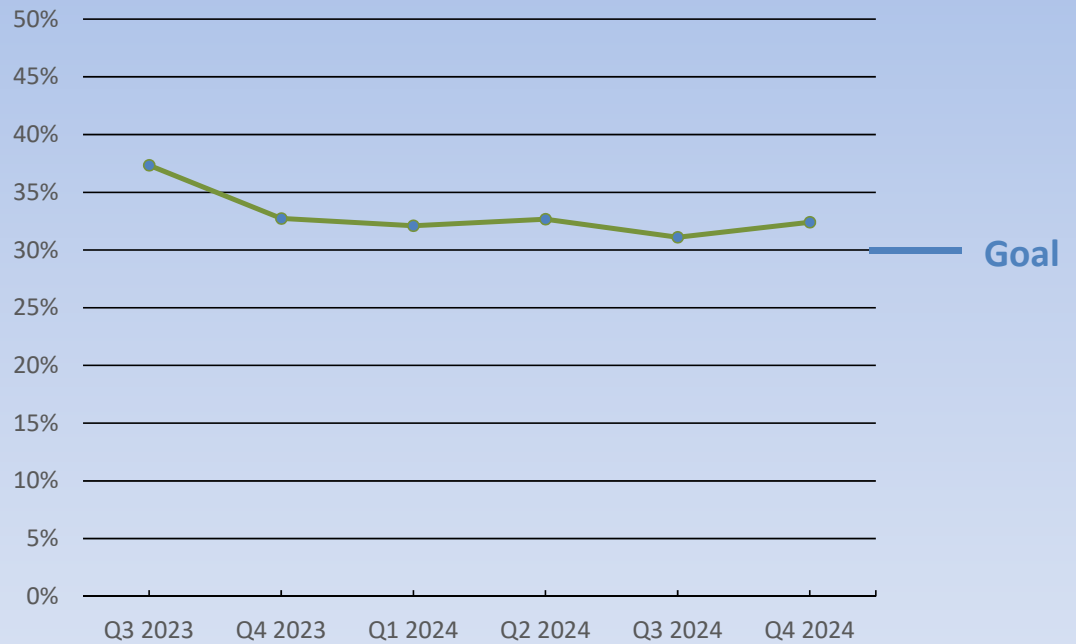
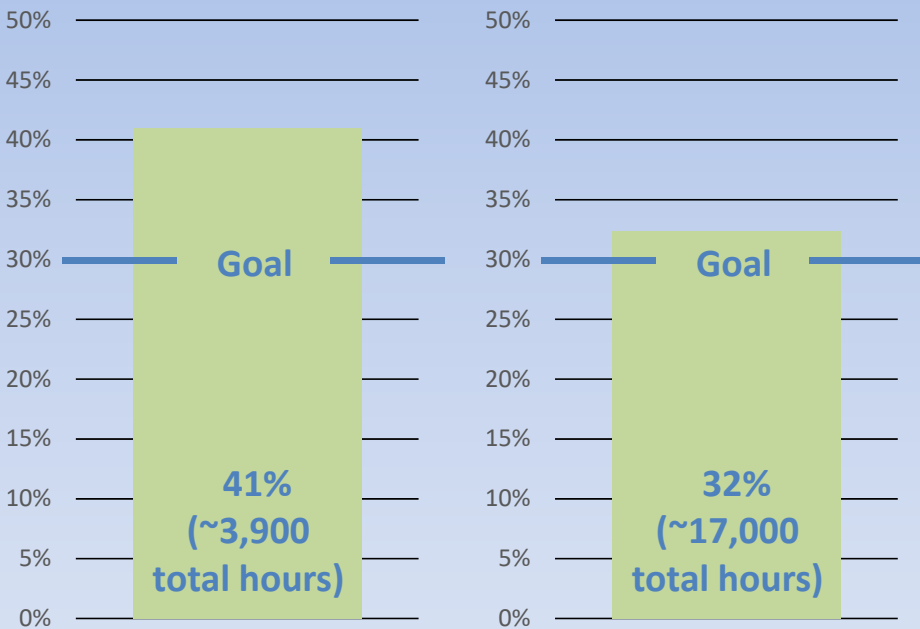


Hartford Labor Status

Hartford Labor
2024 (Q4)

Hartford Labor
2024 (Annual)

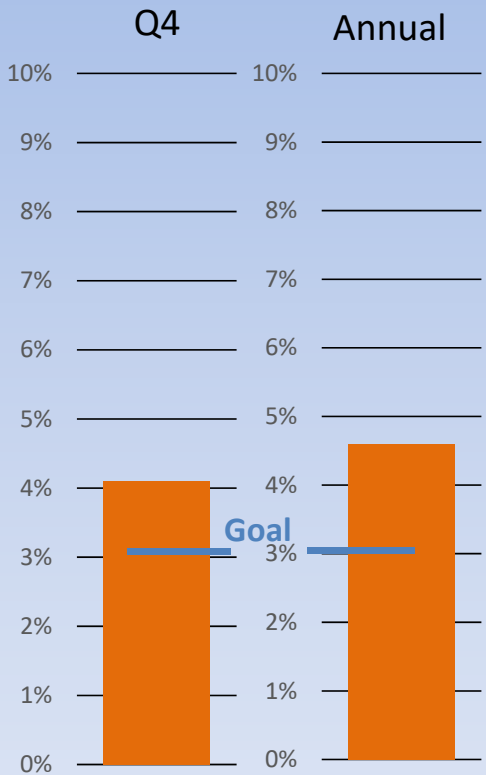
Hartford Labor Program
Running Total to Date (~23,000 total hours)*



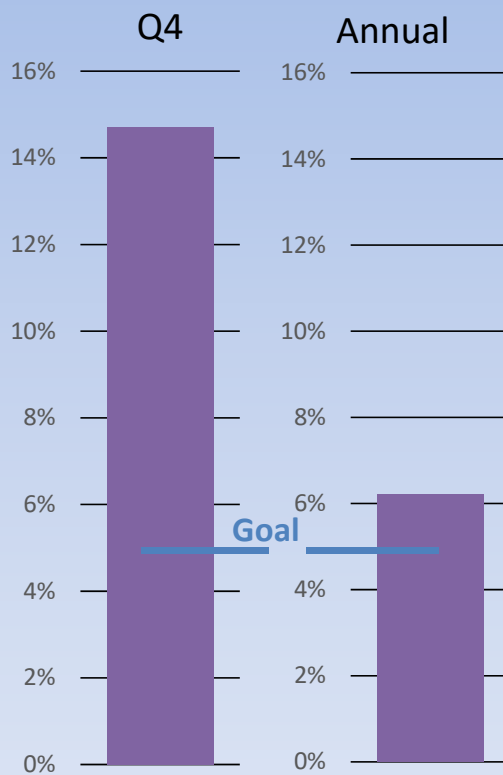
Note*: Statistics are based on all Hartford Consent Order projects started after July 2023 under construction. 30% target based on similar City of Hartford goal on municipal projects.

Minority/Women Business Enterprises Status

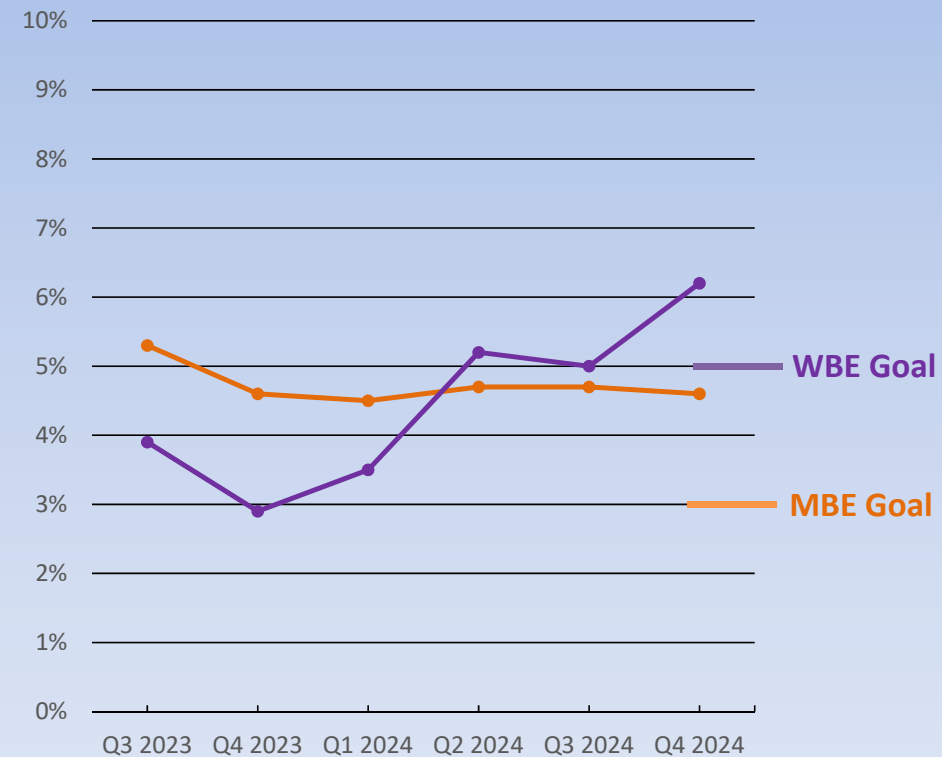
2024 MBE (by \$)



2024 WBE (by \$)



MBE and WBE Program To Date (by \$)*



Note*: Statistics are based on all Consent Order related projects under construction, beginning in July 2023.

MBE and WBE targets based on CT DEEP Clean Water Fund (CWF) goals

Closing Remarks

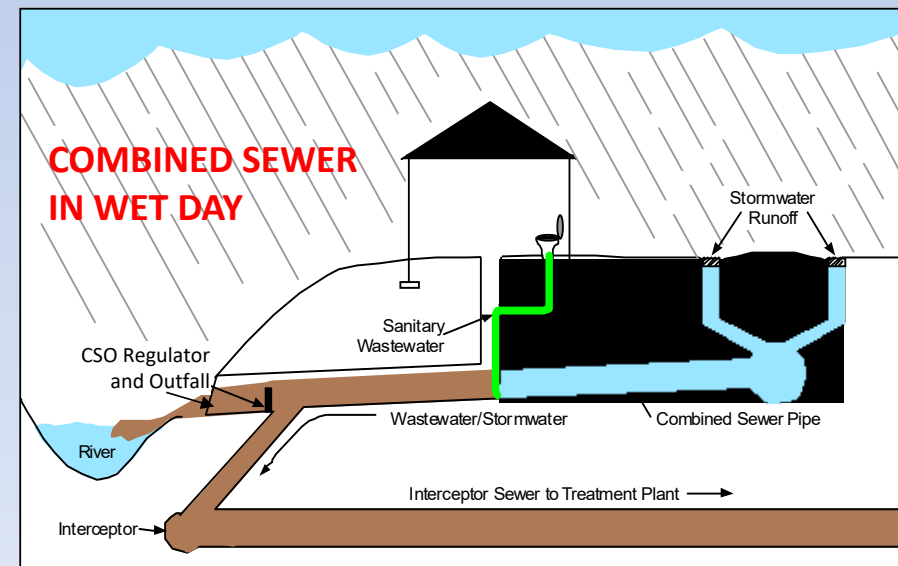
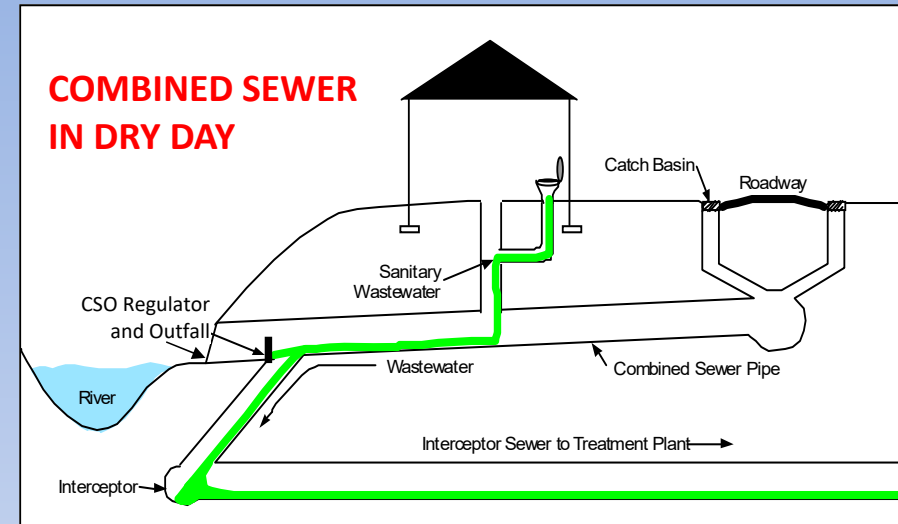
- Many ongoing initiatives and projects
- Many ways to **stay informed**
 - Visit - <https://themdc.org/north-hartford-sewer-improvement-projects/>
 - Via your local NRZ
- Quarterly Consent Order Meetings
 - Second Thursday of the months of March, June, September, and December
 - Each meeting will also be virtual
- Comments and Questions

List of Acronyms

- AFSCME = American Federation of State, County and Municipal Employees
- AHNA = Asylum Hill Neighborhood Association
- BWV = Backwater Valve
- COH = City of Hartford
- CSO = Combined Sewer Overflow
- CT DEEP = Connecticut Department of Energy and Environmental Protection
- CWF = Clean Water Fund
- CWPC = Clean Water Project Charge
- DAS = Department of Administrative Services
- DBE = Disadvantaged Business Enterprise
- EPA = Environmental Protection Agency
- GHAAA = Greater Hartford African American Alliance
- GHFC = Greater Hartford Flood Commission
- IP/CSO LTCP = Integrated Plan/CSO Long-Term Control Plan
- MBE = Minority-Owned Business Enterprise
- MCC = Minority Construction Council
- MG = Million Gallons
- NAWIC = National Association of Women in Construction
- NBPR = North Branch Park River
- NGOs = Non-Government Organizations
- NRZs = Neighborhood Revitalization Zones
- PPID = Private Property Inflow Disconnect
- Q3 = Quarter 3 (ex. period from July 1, 2023 to September 30, 2023)
- RFP = Request for Proposal
- RFQ = Request for Qualifications
- ROW = right-of-way
- SBE = Small Business Enterprise
- SHCST = South Hartford Conveyance & Storage Tunnel
- SSES = Sanitary Sewer Evaluation Survey
- SSO = Sanitary Sewer Overflow
- WBE = Women-Owned Business Enterprise

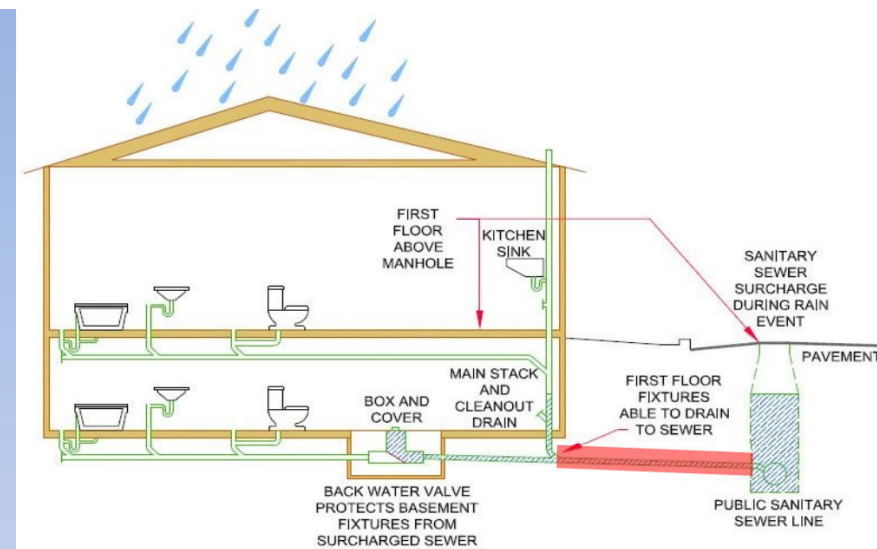
Common Terms & Definitions

- **Separate/sanitary sewer**
 - pipe designed to only convey wastewater
 - how sewers are built now, all member towns except Hartford
- **Storm drain**
 - pipe designed to convey only stormwater
- **Combined sewer**
 - pipe designed to convey **both** sanitary and stormwater (including catch basins)
 - How sewers were built 100 years ago
 - Issues with Combined Sewers:
 - **Dry Day:** No issues, enough capacity for household sewage (toilet, showers, etc)
 - **Wet Day:** Stormwater enters sewer (example: through catch basins). The combined sewer becomes too full, causing overflows (CSOs) into streams/rivers



Common Terms & Definitions

- **Lateral/House Connections**
 - Pipe (shown in red) connecting the wastewater from homes to the District's sewer main
- **Combined Sewer Overflow (CSO)**
 - condition that occurs when wet weather flows in a combined sewer system exceed the treatment capacity at the plant and/or in the pipes, causing it to discharge flow into typically a storm drain or river (via a CSO regulator and outfall)
 - Example: "N-2" and "N-4"
- **Sanitary Sewer Overflow (SSO)**
 - a condition that may occur due to blockage/clog in a pipe, broken infrastructure, or due to significant rainfall



Common Terms & Definitions

- **1-Year Design Storm**
 - The historic event from October 1951 with a 24-hour depth of 2.4 inches and an average recurrence interval (ARI) of 1 year. This design storm has been used to control all CSO regulators except those that discharge to the North Branch Park River or Wethersfield Cove.
- **Typical Year**
 - The typical year evaluated had 42-inches of rain. The selection was agreed to by CT DEEP and followed the approach described by the USEPA's "Combined Sewer Overflows Guidance for Monitoring and Modeling" (USEPA, 1999), which includes analyzing individual storm event return periods, annual precipitation, and simulated CSO volume for each year in the historic record to find a representative typical year.
- **Elimination Storm**
 - Tropical Storm Tammy was adopted for CSO elimination alternatives analysis through correspondence with CT DEEP during the 2012/2014 LTCP Update. The event referred to in the LTCP as Tammy was a combination of the remnants of that storm in combination with Subtropical Depression Twenty-Two. From October 7 to 15, 2005, 13 inches of rain fell at Bradley Airport. The heaviest rain fell on the 8th and the 9th and from the 14th to the 15th, with 5.0 and 5.8 inches falling over respective 24-hour periods