

Flooding Areas Documented by MDC and City of Hartford

- Command center calls reporting wet-weather sewer surcharge (since 2020)
- Command center calls reporting wet-weather street flooding or groundwater in basement (since 2020)
- Areas prone to flooding per MDC or COH Staff

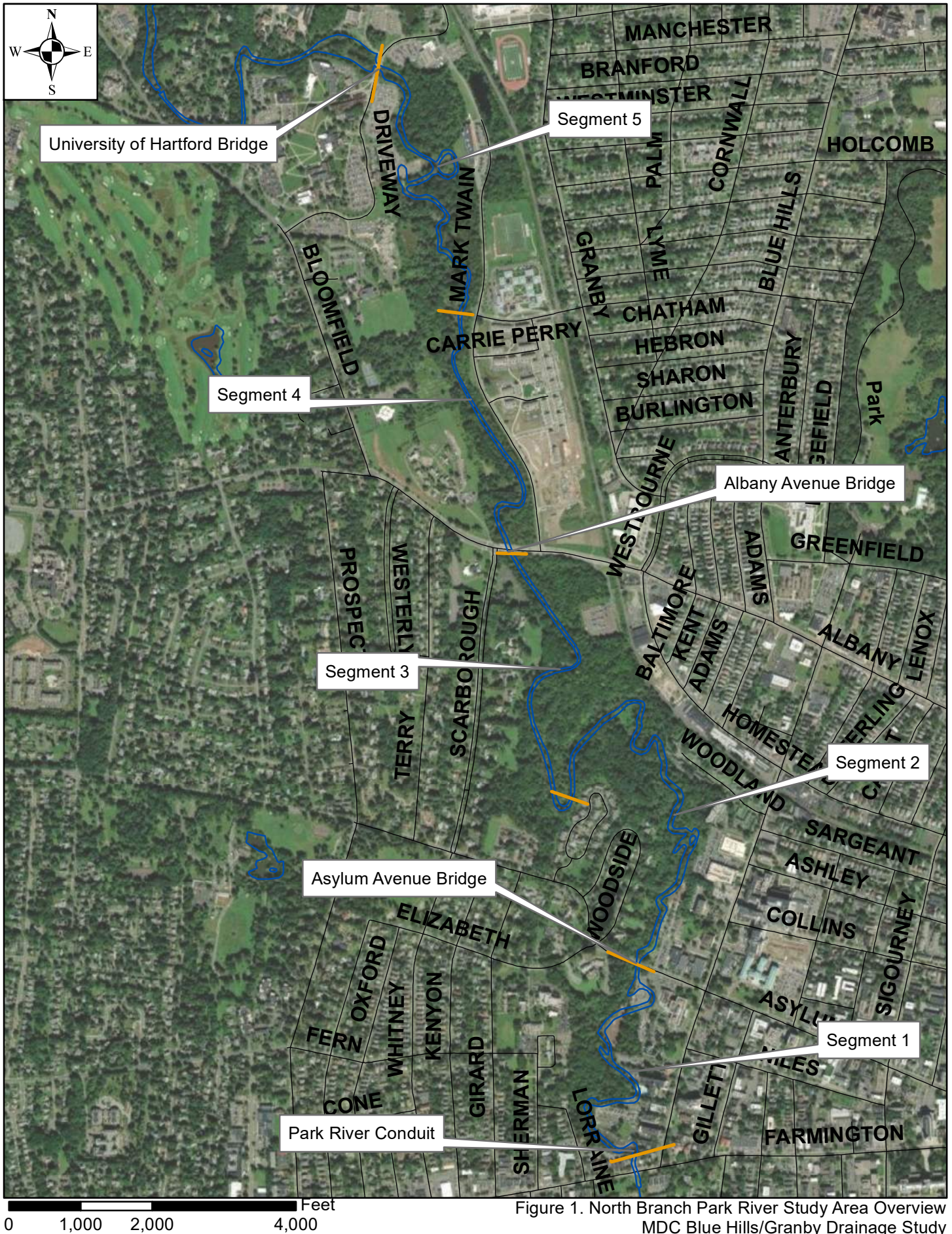
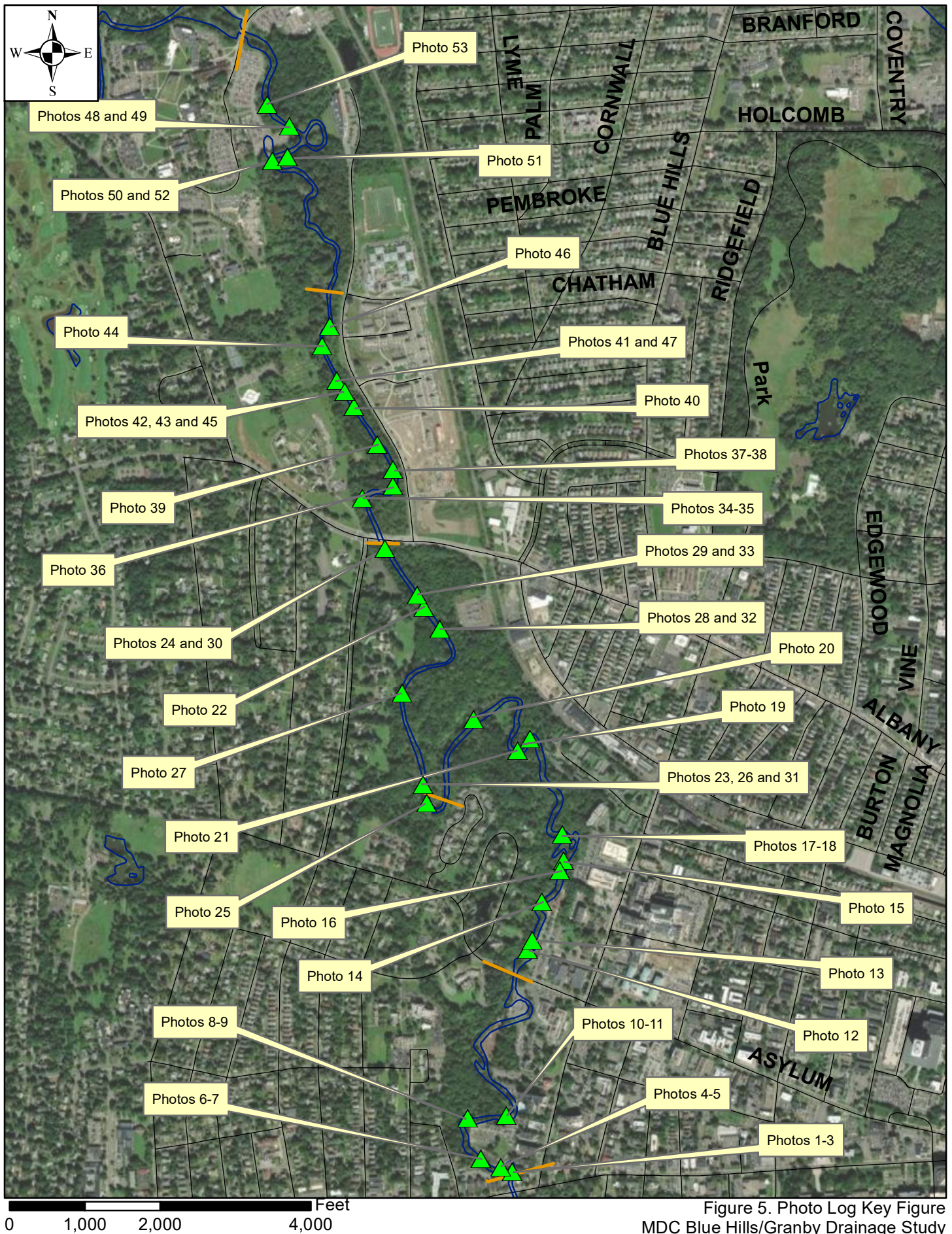


Figure 1. North Branch Park River Study Area Overview
MDC Blue Hills/Granby Drainage Study
North Branch Park River Field Study
Hartford, CT



Figure 2. North Branch Park River Fallen Trees/Debris Overview
MDC Blue Hills/Granby Drainage Study
North Branch Park River Field Study
Hartford, CT





Attachment A

Site Photographs



Photo 1: Debris dam at start of Segment 1, Park River Conduit (See Figure 3-1, TD-1).



Photo 2: Water pooling directly upstream of Park River Conduit (Segment 1).



Photo 3: Vegetation island to the upper left of this photo, submerged aquatic vegetation visible (Segment 1).



Photo 4: Second type of submerged aquatic vegetation located approximately 80-feet west (upstream) of the Park River Conduit (Segment 1).



Photo 5: Segment 1 with chain link fence over rip rap armoring.



Photo 6: Small-gauge rip rap/naturalized rock channel with areas of riffles and runs and vegetated, gently sloping banks (Segment 1).

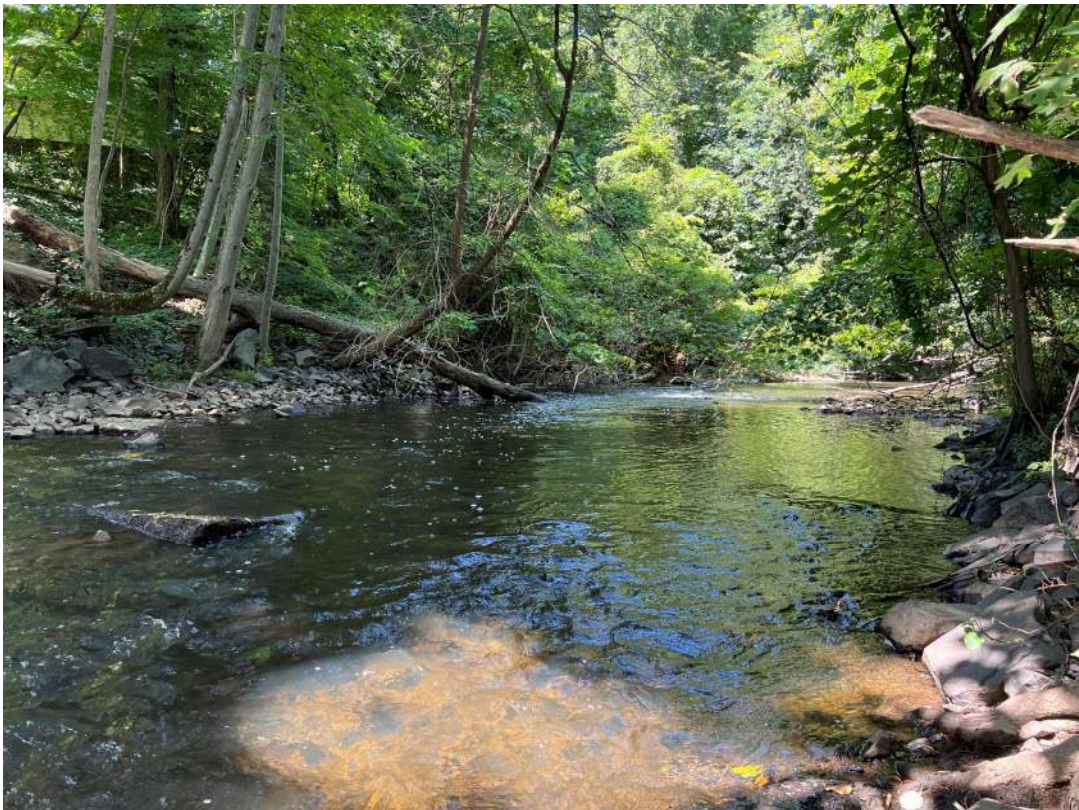


Photo 7: Adjacent to GPS S1DP2, depicting typical river conditions in first portion of Segment 1.



Photo 8: Adjacent to S1DP3, facing west. Large boulders appear placed on bottom, vertical exposed/eroded banks.



Photo 9: S1DP3 facing south, trees in river in Segment 1 (see Figure 3-1, TD-2).

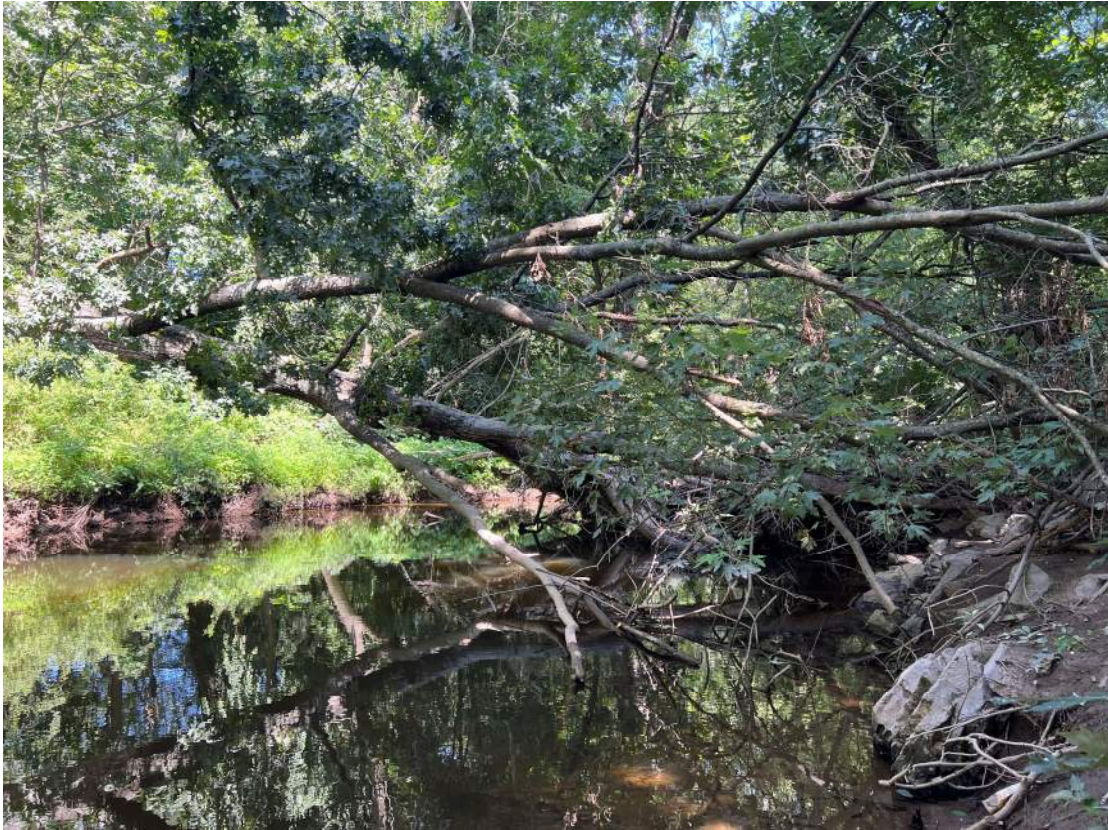


Photo 10: Debris dam behind 21 Woodland Street within Segment 1 (See Figure 3-1, TD-3).



Photo 11: Downed tree and debris dam behind 21 Woodland Street (Segment 1).



Photo 12: Tree debris within river Segment 2 (see Figure 3-2, TD-5).



Photo 13: One of many areas of downed trees in Segment 2 (see Figure 3-2, TD-6).



Photo 14: Tree debris in river in Segment 2 (see Figure 3-2, TD-7).



Photo 15: Downed tree within Segment 2, in both main channel and on braided channel at top of photo (see Figure 3-2, TD-8).



Photo 16: The river becomes a braided channel north of Woodside Circle, and converges back to a single channel west of 129 Woodland Street (Segment 2, see Figure 3-2, TD-8).



Photo 17: Tree dam downstream of dam looking west (Segment 2, see Figure 3-2, TD-9).



Photo 18: Tree dam upstream of dam looking southeast (Segment 2, see Figure 3-2, TD-9).



Photo 19: One of many areas of downed trees in Segment 2 (see Figure 3-2, TD-10).



Photo 20: Typical river and bank conditions in Segment 2.

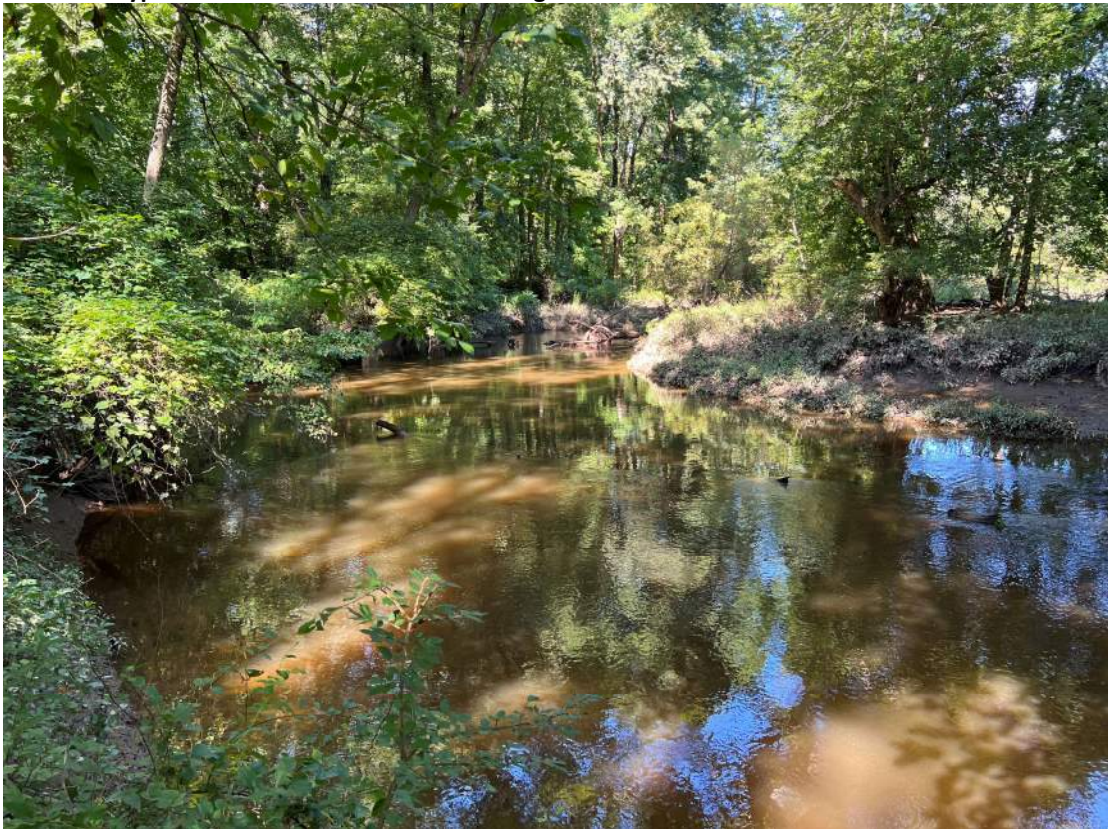


Photo 21: Segment 2 conditions, adjacent to S2DP15.



Photo 22: Typical conditions within Segment 3 for first 2/3 of the segment.

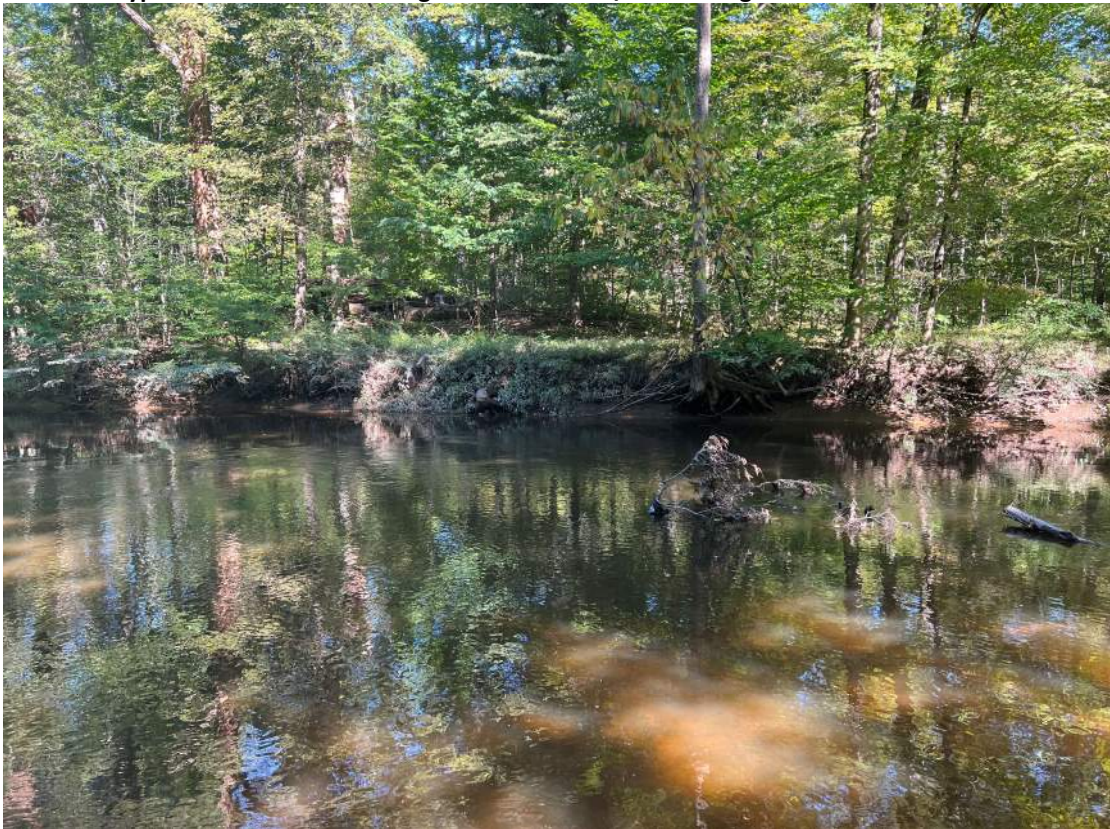


Photo 23: Typical conditions within Segment 3 for first 2/3 of the segment.



Photo 24: Northernmost portion of Segment 3 where the river becomes shallower and with a higher prevalence of cobble and rock in the riverbed.



Photo 25: Downed trees, debris dam within Segment 3 (see Figure 3-3, TD-11).



Photo 26: Downed tree debris and near vertical banks in Segment 3 (see Figure 3-3, TD-12).



Photo 27: Tree debris in Segment 3 (see Figure 3-3, TD-13).



Photo 28: Example of downed trees in Segment 3 (see Figure 3-3, TD-14).



Photo 29: Tree debris and near vertical banks in Segment 3 (see Figure 3-3, TD-15).



Photo 30: Tree debris in Segment 3 (see Figure 3-3, TD-16).



Photo 31: Example of near vertical banks on the opposite bank in Segment 3.



Photo 32: Example of near vertical banks on the opposite bank in Segment 3 (also TD-14 on Figure 3-3).



Photo 33: Example of near vertical banks on the opposite bank in Segment 3.



Photo 34: Tree debris within Segment 4 (see Figure 3-4, TD-17).

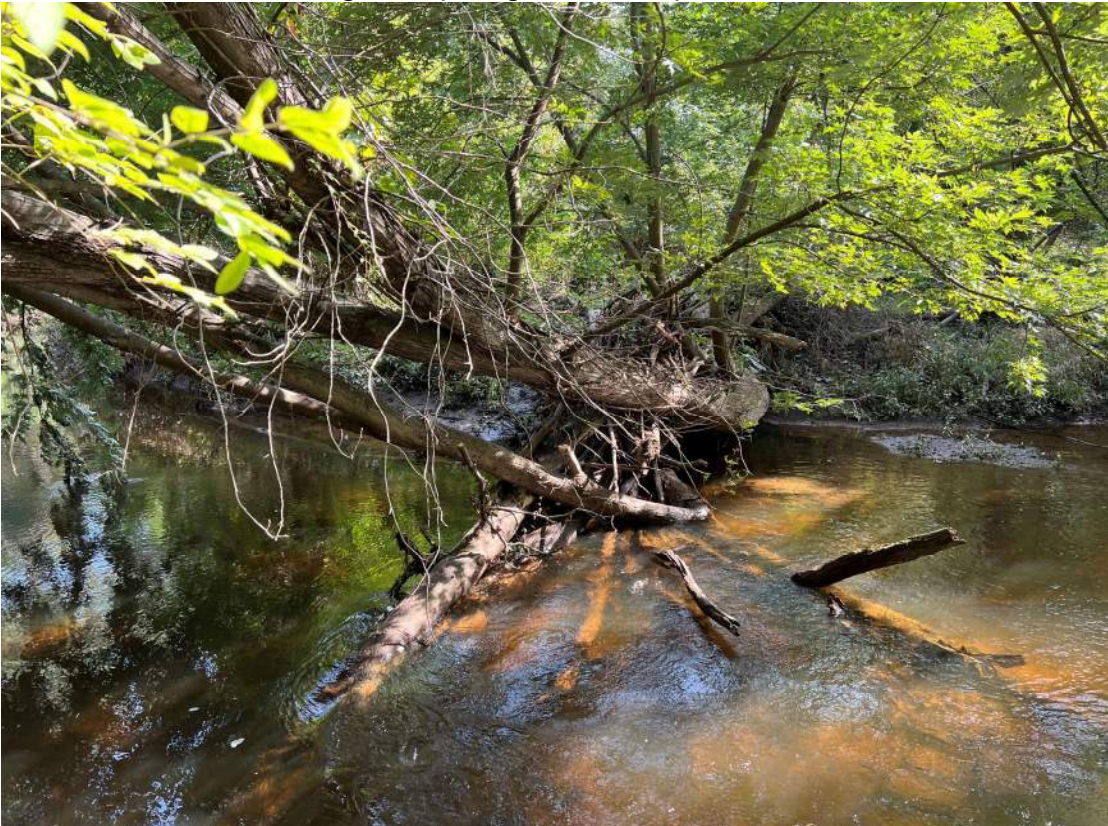


Photo 35: Tree dam within Segment 4 (see Figure 3-4, TD-18).



Photo 36: Tree debris/dam in Segment 4 (see Figure 3-4, TD-19).



Photo 37: Bank failure conditions, down trees, undercut banks in Segment 4 (see Figure 3-4, TD-20).



Photo 38: Typical conditions in Segment 4.



Photo 39: Tree dam in Segment 4 (see Figure 3-4, TD-21).



Photo 40: Typical conditions in Segment 4.



Photo 41: Typical conditions in Segment 4.



Photo 42: Downed trees in Segment 4, trees creating debris dam (see Figure 3-4, TD-22).



Photo 43: Downed trees in Segment 4, trees creating debris dam (see Figure 3-4, TD-23).



Photo 44: Downed trees within Segment 4 (see Figure 3-4, TD-24).

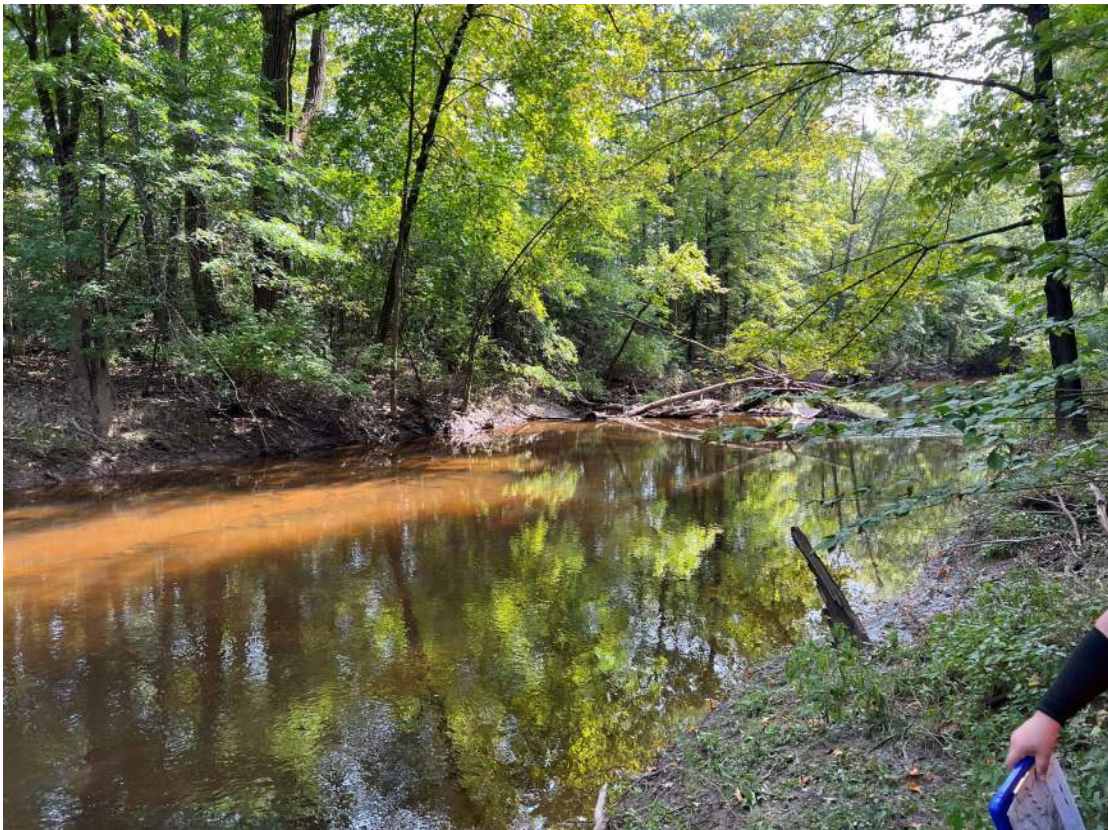


Photo 45: Bank failure and downed trees in Segment 4 (additional view of TD-22).



Photo 46: Undercut banks/trees, nearly vertical banks, bank failure, fallen trees in Segment 4 (additional view of trees in area of TD-23).



Photo 47: Eroded, steeply sloped banks, undercut trees/roots, bank failure in Segment 4.



Photo 48: Typical conditions in Segment 5.



Photo 49: Typical conditions in Segment 5.



Photo 50: Overtopped banks within Segment 5.



Photo 51: Overtopped banks within Segment 5.



Photo 52: Overtopped banks within Segment 5.



Photo 53: Clearing along riverbank adjacent to parking lot.