



Q4 2023 (October 1 to December 31) and 2023 Annual Summary

March 14, 2024



Meeting Agenda

- Welcoming Remarks
- Introductions
- Meeting Purpose
 - To provide an annual and quarterly update on MDC's Integrated Plan, with current focus on North Hartford
- Presentation
 - Update on Consent Order projects completed and under construction
 - Schedule for Consent Order projects under construction or yet to start construction
 - Status of use of minority and disadvantaged business enterprises on its Consent Order projects
- Public Comments and Questions

Presentation Outline

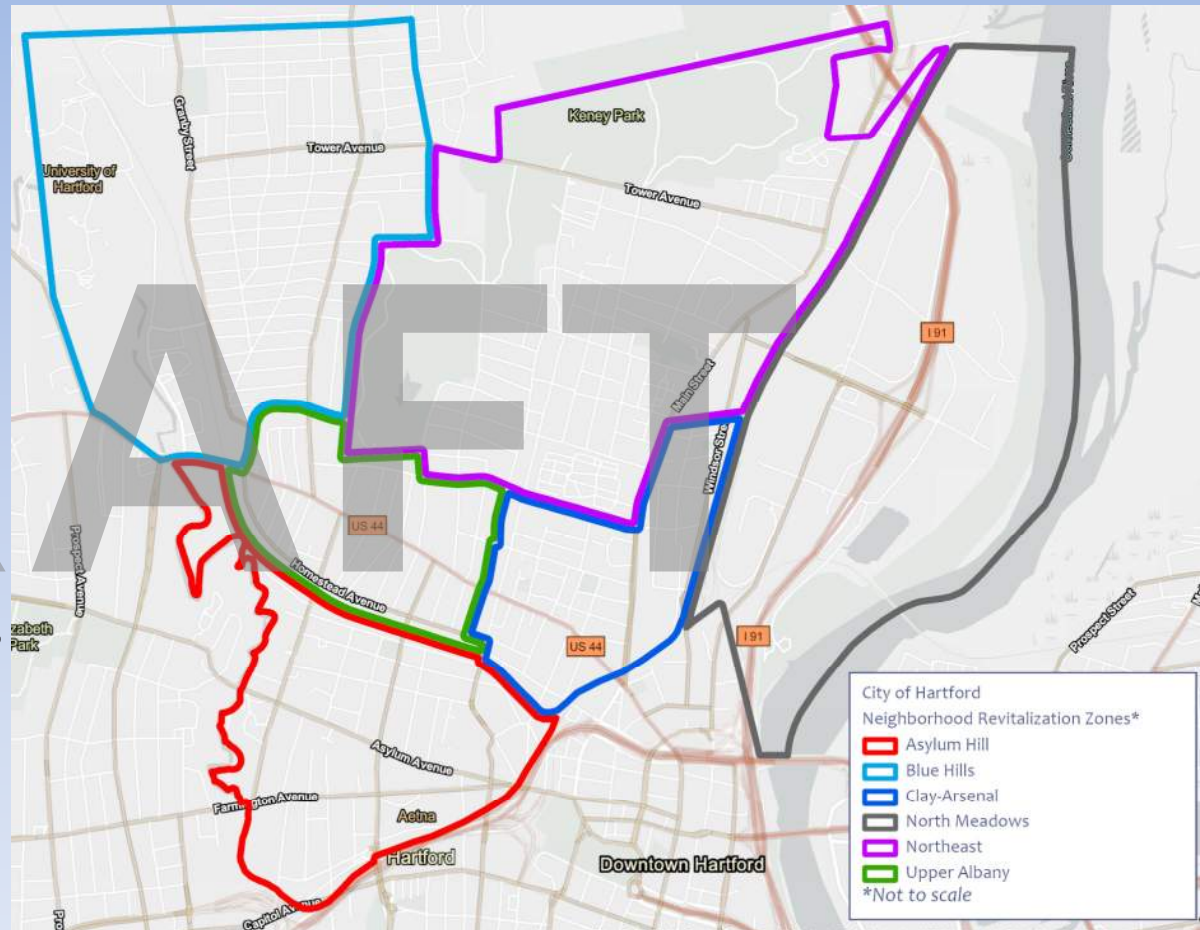
- Background on focus area (North Hartford)
- Quarterly and Annual Consent Order reporting requirements
- Overview of Consent Order projects in:
 - North Hartford
 - Hartford (outside of North Hartford)
 - Outside Hartford
- Update on key performance indicators
- MDC's recruiting efforts for Small, Minority, Women and Disadvantaged Businesses (SBE, MBE, WBE, DBE) and Local Labor
- Clean Water Project Charge (CWPC) Update
- Closing remarks

The North Hartford Area

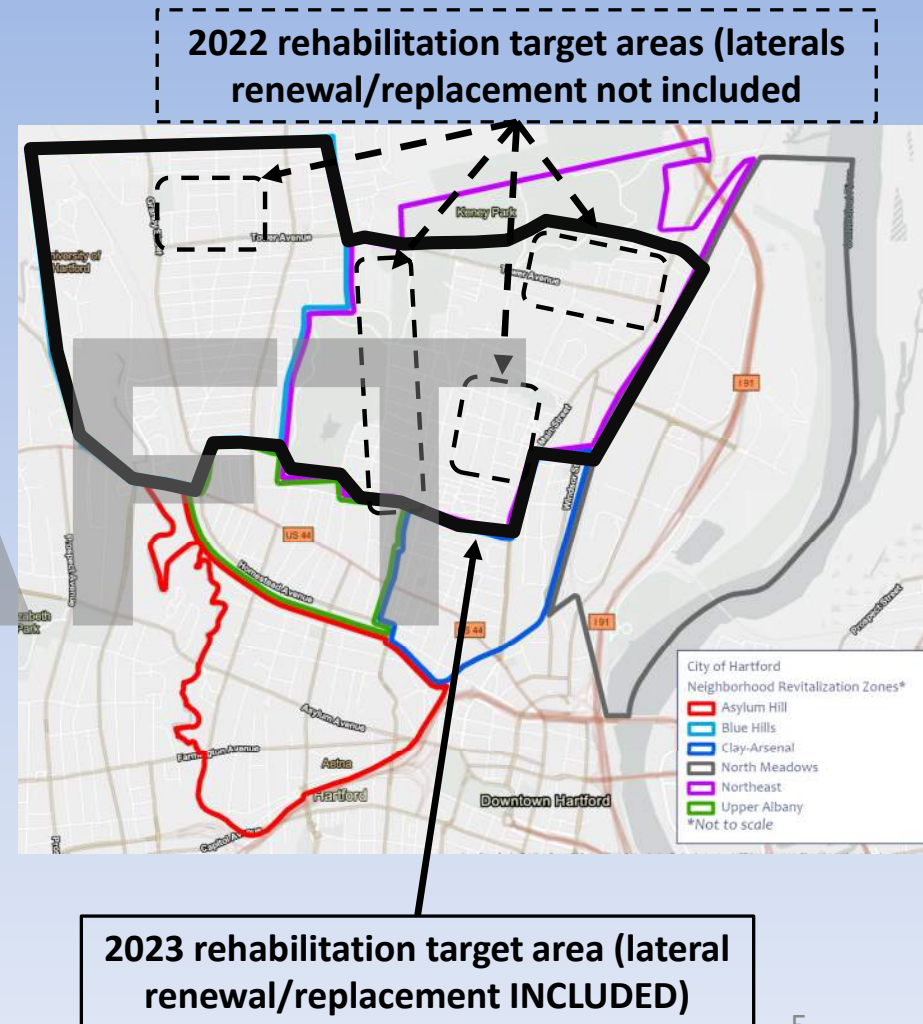
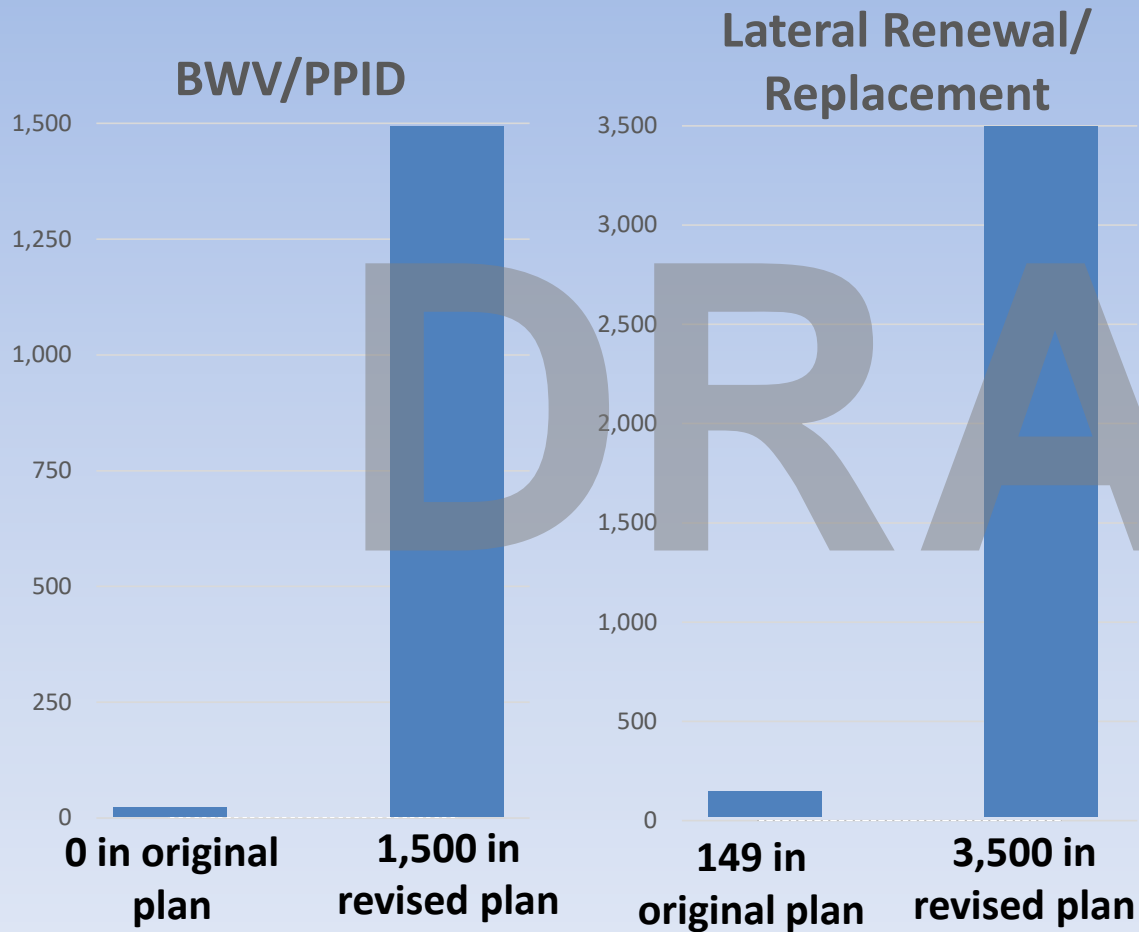
Focus is:

- Sewer separation: remove public and private stormwater from sewer system
- Private property sewer work (which was not the prior focus)
- Reduce flooding
- Reduce sewer surcharge
- Reduce private property backups
- Reduce CSOs to rivers

MDC listened to the North Hartford Community and responded with an altered program that provides immediate community benefit



Community Benefit: Private Property Improvements



Consent Order Modification Reporting Requirements

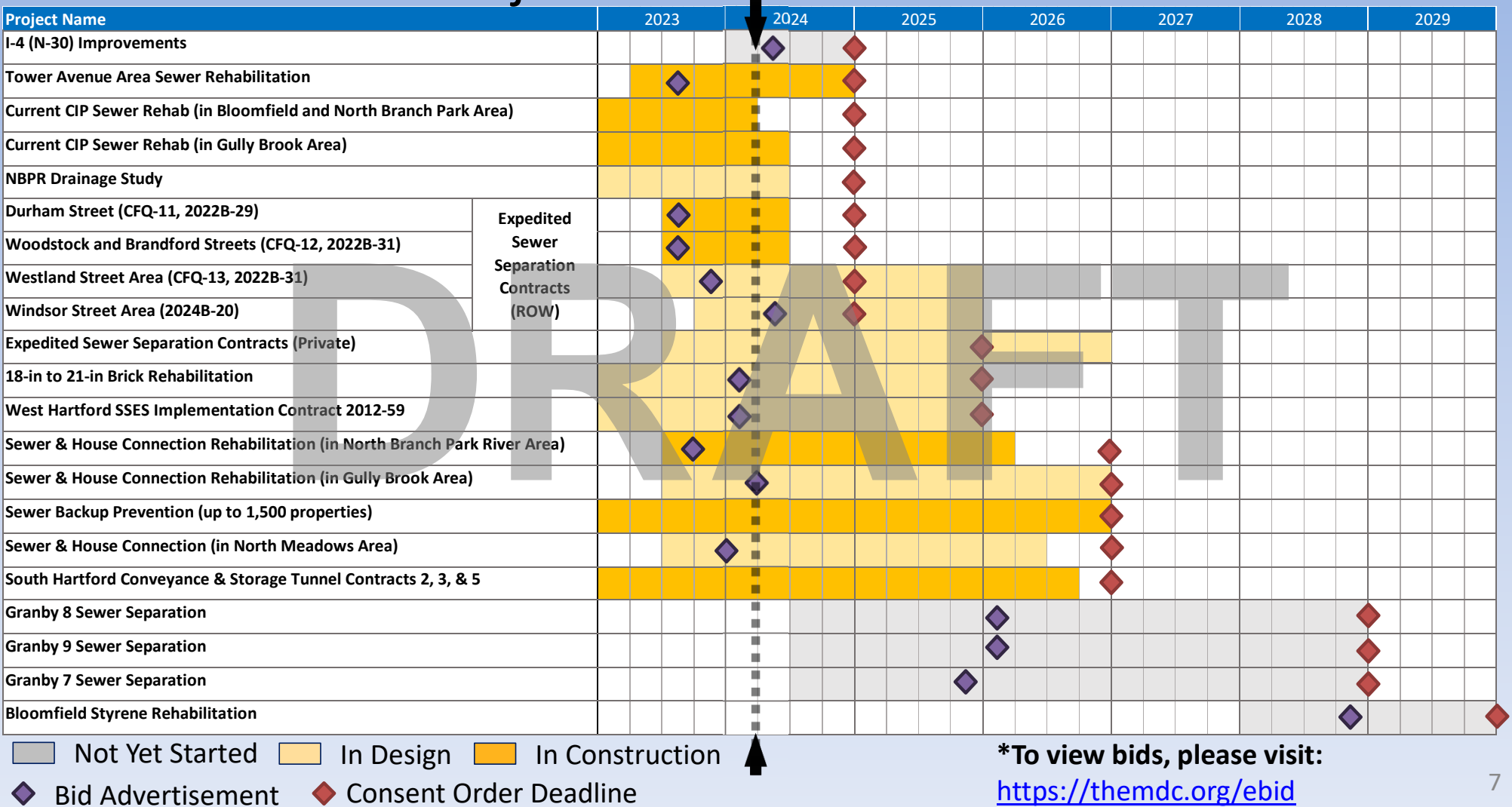
Quarterly and Annual Reporting Required under Consent Order Modification

- 1) An update on projects completed and under construction
- 2) A schedule for projects under construction or yet to start construction
- 3) A status of use of minority and disadvantaged business enterprises, including efforts and success at recruiting labor and contractors from the area where projects are or will be occurring
- 4) Other items as requested by Commissioner
 - *Not applicable for this quarter*

Other Items Voluntarily Included by the MDC

- MDC committed to 30% Hartford based workforce for North Hartford work associated with Consent Order modification
 - 30% based on similar City of Hartford goal on municipal projects

Consent Order Projects & Timeline



Consent Order Projects: NRZ Impact and CSO Reduction

| Project Name | | Neighborhood Revitalization Zone | 1 Yr CSO Reduction (MG) | Typical Year CSO Reduction (MG) |
|---|--|--|-------------------------|---------------------------------|
| I-4 (N-30) Improvements | | West End | | |
| Tower Avenue Area Sewer Rehabilitation | | North East | | |
| Current CIP Sewer Rehab (in Bloomfield and North Branch Park Area) | | Blue Hills, Clay Arsenal, South Downtown, South Behind the Rocks | | |
| Current CIP Sewer Rehab (in Gully Brook Area) | | Clay Arsenal, Asylum Hill, South Behind the Rocks | 1.3 | 10.0 |
| NBPR Drainage Study | | Blue Hills, West End, Asylum Hill | * | * |
| Durham Street (CFQ-11, 2022B-29) | Expedited Sewer Separation Contracts (ROW) | Blue Hills | | |
| Woodstock and Brandford Streets (CFQ-12, 2022B-31) | | Blue Hills | | |
| Westland Street Area (CFQ-13, 2022B-31) | | Northeast | | |
| Windsor Street Area (2024B-20) | | North Meadows | | |
| Expedited Sewer Separation Contracts (Private) | | Various | ** | ** |
| 18-in to 21-in Brick Rehabilitation | | Asylum Hill, Clay Arsenal, South End, Marg | 0.8 | 7.0 |
| West Hartford SSES Implementation Contract 2012-59 | | N/A | 0.2 | 1.2 |
| Sewer & House Connection Rehabilitation (in North Branch Park River Area) | | Blue Hills | | |
| Sewer & House Connection Rehabilitation (in Gully Brook Area) | | Northeast | | |
| Sewer Backup Prevention (up to 1,500 properties) | | Various | ** | ** |
| Sewer & House Connection (in North Meadows Area) | | North Meadows | | |
| South Hartford Conveyance & Storage Tunnel Contracts 2, 3, & 5 | | South End, Marg, South Behind the Rocks | | |
| Granby 8 Sewer Separation | | Blue Hills | | |
| Granby 9 Sewer Separation | | Blue Hills | | |
| Granby 7 Sewer Separation | | Blue Hills | | |
| Bloomfield Styrene Rehabilitation | | N/A | | |

*CSO Reductions for the NBPR Drainage Study included in individual Granby Separation Contracts

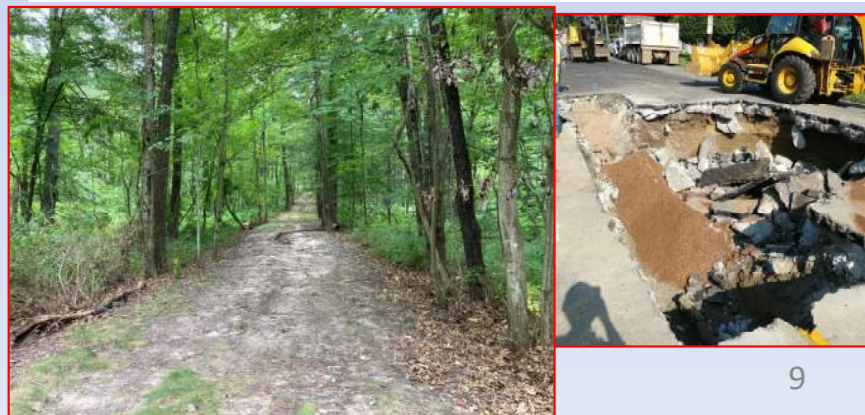
** CSO Reductions associated with Private Property Improvements included in associated ROW Project Reduction Estimates

Additional Sewer Improvement Projects

Non-Consent Order (2019 through Q4 2023)

- Clearing Sewer Easements on Private Property
 - Completed = Bloomfield, Rocky Hill, East Hartford, Windsor
 - In progress = Newington
 - Other Member Towns to follow
- Easement Sewer Rehabilitation
 - Bloomfield currently
 - Planning phase for the next design of easement sewer rehabilitation work has started
- On-Call Sewer Rehabilitation/Repair
 - 230,000 feet rehabilitated from 2019 to 2023
 - Performed in all Member Towns
 - In Q4: work performed in Bloomfield, East Hartford, Hartford, West Hartford
 - Asset management/paving program coordination

| Town | Easement Clearing Length (feet) |
|----------------------|---------------------------------|
| Bloomfield | 98,000 (completed) |
| Rocky Hill | 59,100 (completed) |
| East Hartford | 66,200 (completed) |
| Windsor | 132,300 (completed) |
| Newington | 51,300 (in progress) |
| Hartford | 55,800 |
| West Hartford | 54,300 |
| Wethersfield | 59,200 |
| Total (feet) | 576,000 |
| Total (miles) | 109 |



Consent Order Projects: North Hartford

North Branch Park River Area Sewer Rehabilitation:

Rehabilitation of sewer mains and house connections upstream of CSOs N-2 and N-4

Expedited Sewer Separation Contracts (ROW):

Construction of storm drains in streets
(Additional separation added per MDC review)

Expedited Sewer Separation Contracts (Private):

Private property storm separation (to follow Public Separation Contracts)

North Branch Park River Drainage Study:

Evaluating the North Branch Park River and surrounding sewer and drainage infrastructure in support of future river improvements and sewer separation

Granby 7/8/9 Sewer Separation:
Sewer separation with new storm drains and private property disconnections (final location based on North Branch Park River Study)

Tower Avenue Area Sewer Rehabilitation:

Rehabilitation of sewer mains and house connections upstream of CSOs NM-2, NM-3, and NM-4

North Meadows Area Sewer Rehabilitation:

Rehabilitation of sewer mains and house connections upstream of CSOs NM-5, NM-6, and NM-7

Gully Brook Area Sewer Rehabilitation:

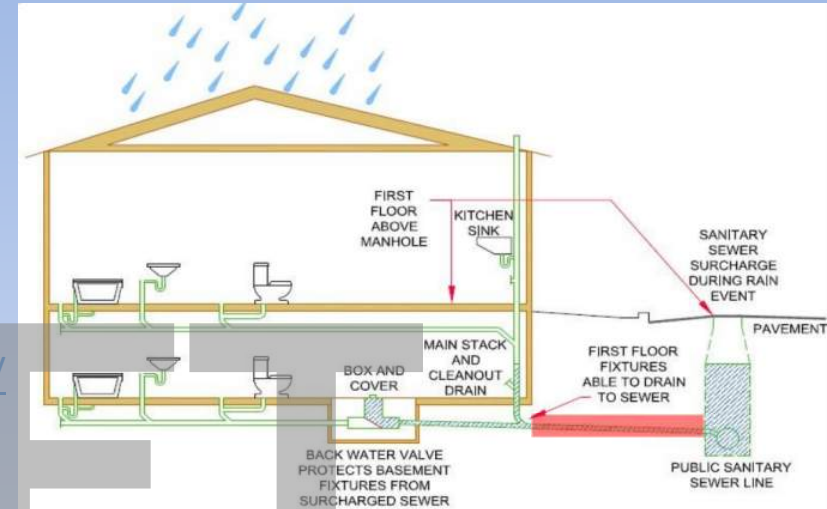
Rehabilitation of sewer mains and house connections upstream of CSO G-13W

Not Yet Started
In Design
In Construction

Consent Order Projects: Private Property Benefit

Sewer Backup Prevention Program (“Backwater Valve Program”)

- Separates homes’ foundation drains (via installing sump pumps) and gutters from the sewer system, reducing surcharging during wet weather
- \$12.2 million (up to 1,500 homes) for North Hartford properties (Consent Order project)
- <https://themdc.org/utility-services/backwater-valve-program/>
- To **schedule a free assessment** of your property, contact MDC Utility Services at **(860) 278-7850, ext. 3123**



House Connection Program – voluntarily included by MDC

- MDC Board initiative to provide same benefit District-wide that was being offered to North Hartford residents
- Emergency and non-emergency maintenance and inspection services at no cost to the property owner
- Provides funding for renewal of the house connection, if needed
- <https://themdc.org/utility-services/sewer-house-connection-program/>



Contractors for both programs are anticipated to be all SBE (Small Business Enterprise)

Consent Order Projects: Outside of North Hartford

Gully Brook Area Sewer Rehabilitation:

Rehabilitation of sewer mains
and house connections

18-in to 21-in Brick Rehabilitation:

Rehabilitation of brick sewer mains

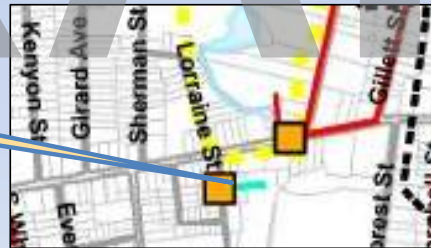
I-4 (N-30) Improvements:

Rehabilitation of sewer mains
downstream of CSO I-4 (N-30)

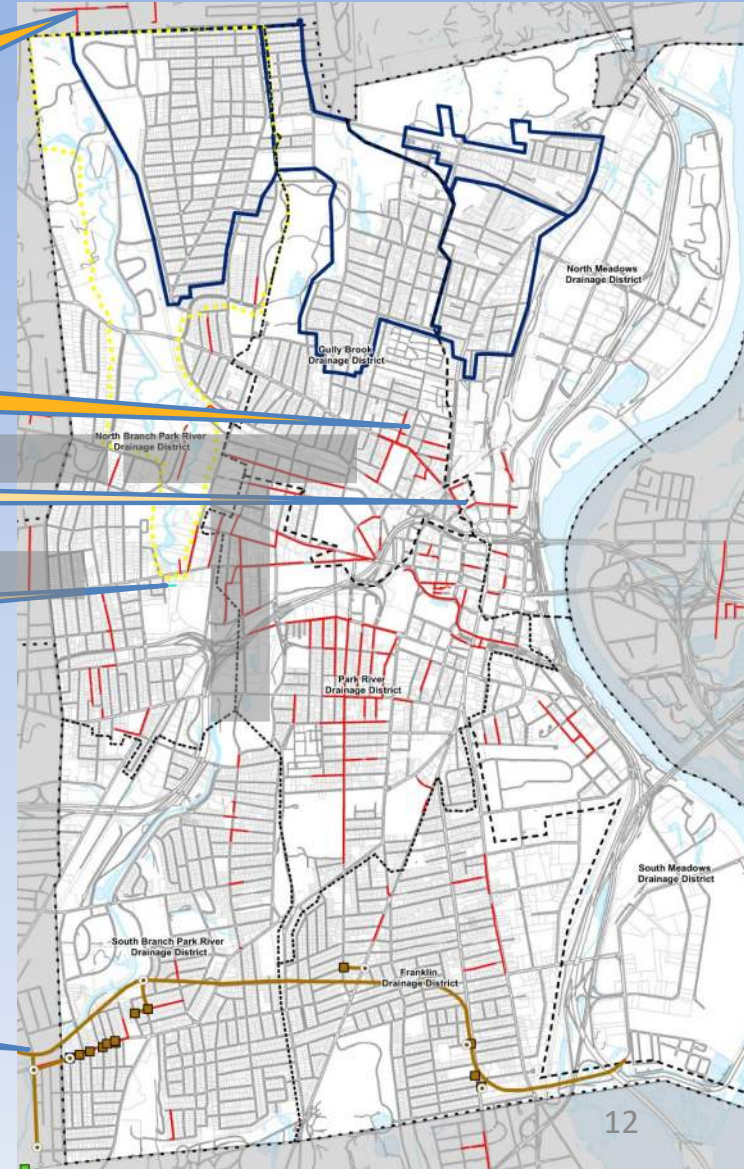
South Hartford Conveyance & Storage Tunnel (SHCST) Contracts 2, 3, & 5:

Construction of the SHCST, drop shafts,
consolidation conduits and
dewatering pumpstation

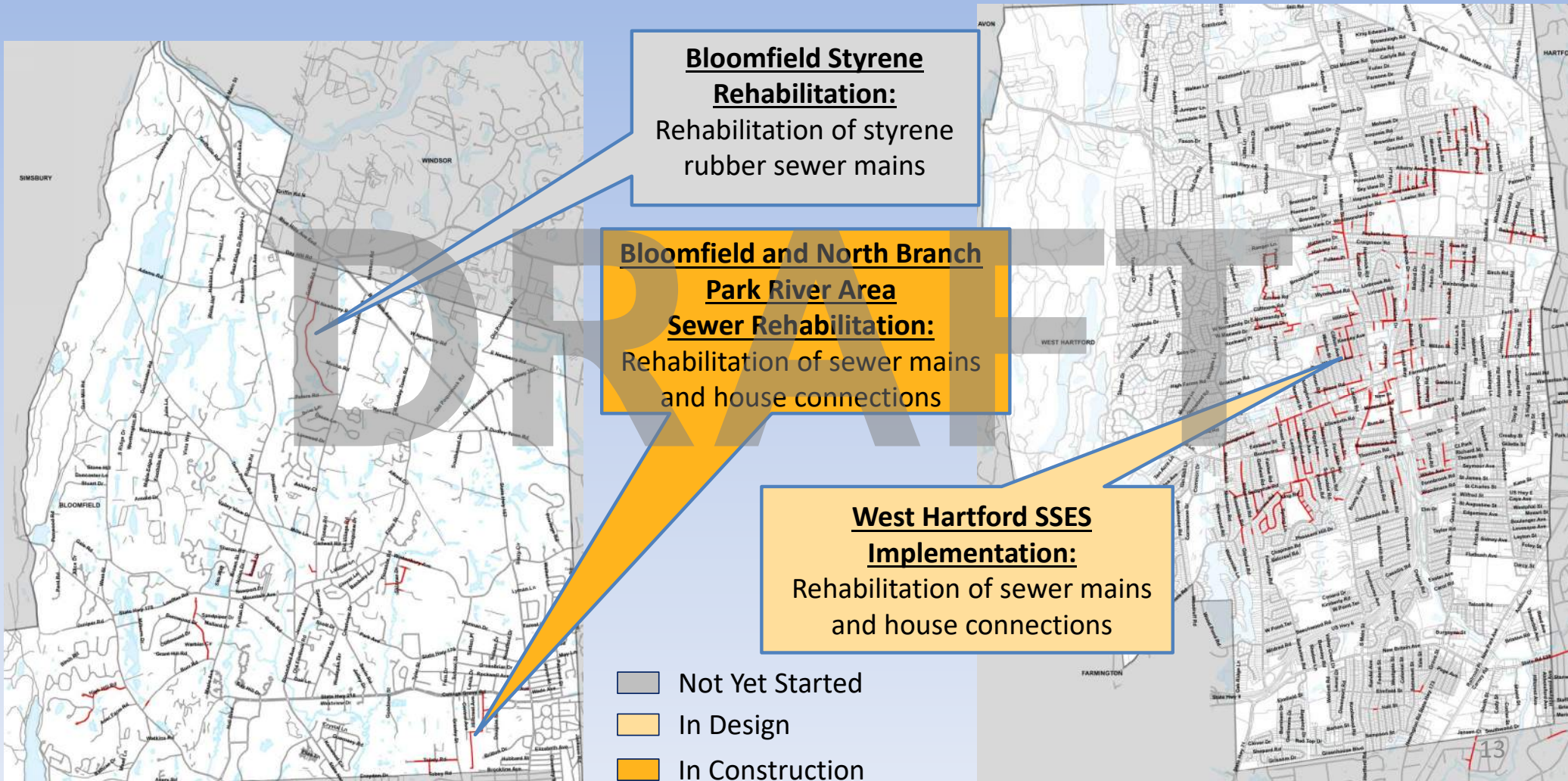
**Bloomfield and North Branch Park
River Area Sewer Rehabilitation:**
Rehabilitation of sewer mains and
house connections



Not Yet Started In Design In Construction



Consent Order Projects Locations: Outside of Hartford



North Branch Park River Drainage Study Update

- Importance of Study
 - NBPR has sediment buildup (i.e., from streets) and blockages (i.e., from downed trees); needs attention as these contribute to street and localized flooding and backups
- Study needed to determine
 - Required flood control and stream improvements (COH priority)
 - Approach to remove stormwater from sewers to eliminate CSOs (MDC priority)
- River assessment ongoing
- Short term improvements performed
 - City cleaned Park River Conduit inlet
- Durham Street sewer separation ongoing
- Conceptual sewer separation design underway
- Study to be completed in 2024



Status of Projects: Key Performance Indicators (District Wide*)

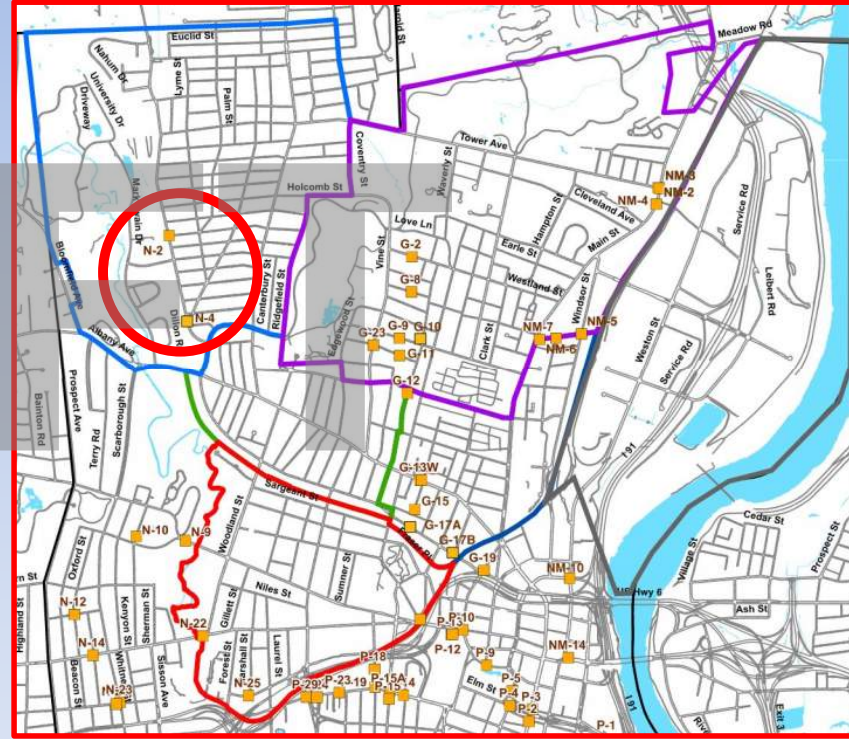
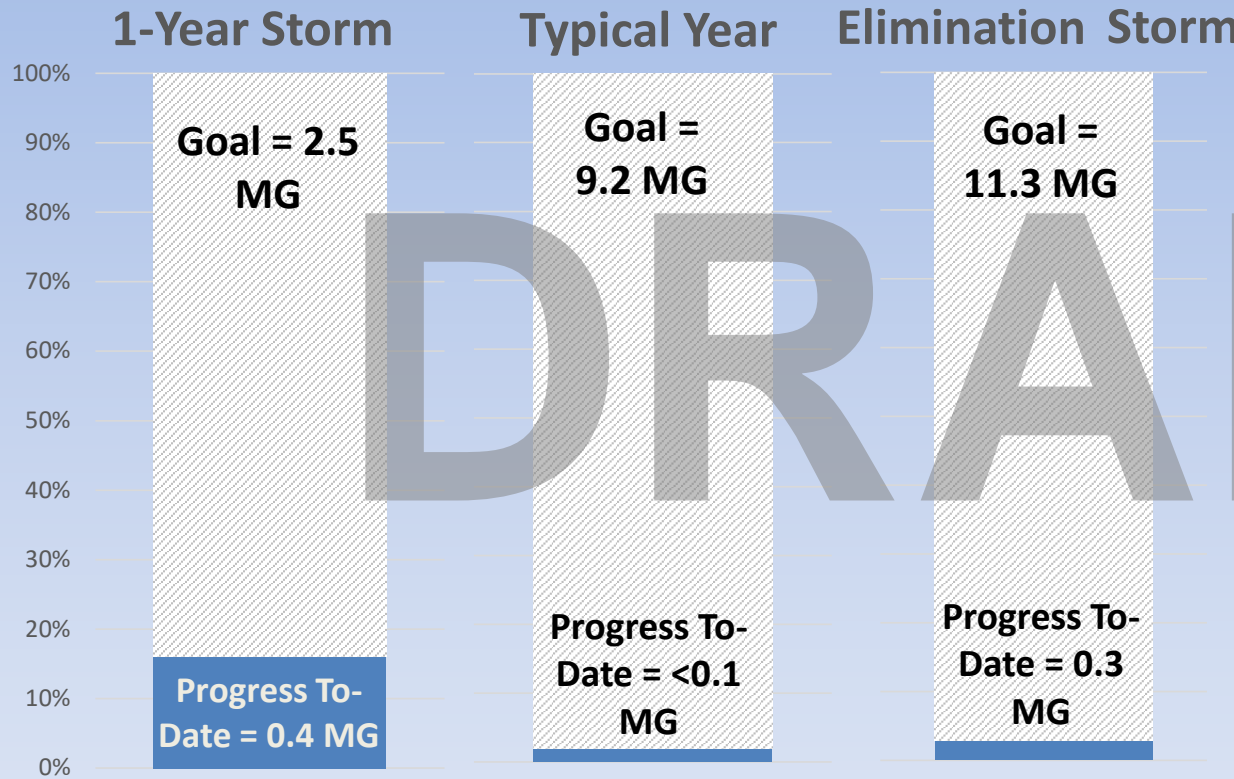
| Key Performance Indicators | Q4 2023 (Oct 1 through Dec 31) | 2023 Annual (July 1 through Dec 31) | Total To Date (since 2019) |
|--|--------------------------------------|---|-------------------------------|
| Storm drains or sanitary sewers installed (feet) | 1,631' | 2,531' | 31,631' |
| Sewer or storm laterals installed via separation (# of properties) | 0 | 0 | 0 |
| Sewer mains rehabilitated (feet) (miles) | 36,193' (6.9) | 65,193' (12.3) | 324,193' (61.4) |
| Sewer laterals inspected (# of properties) | 592 | 1,392 | 3,192 |
| Sewer laterals renewed (# of properties) (feet) | 307 (10,039') | 377 (12,039') | 387 (12,539') |
| Backwater valve/surcharge protection (# of properties) | 155 | 235 | 1,017 |
| Private property internal disconnects (# of properties) | 53 | 72 | 111 |
| Private property separation completed (# of properties) | 0 | 0 | 0 |

*Work in all Member Towns, including North Hartford

Status of Projects: Key Performance Indicators (North Hartford)

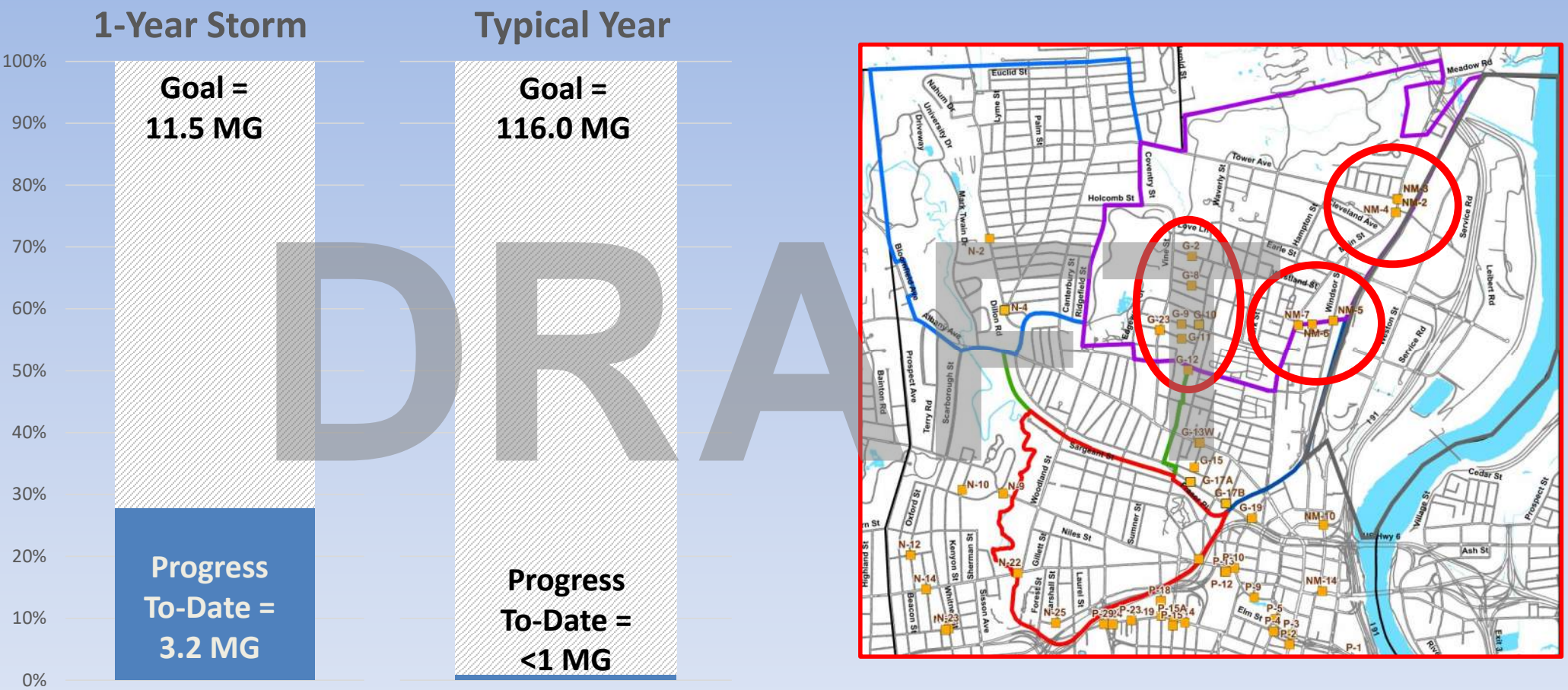
| Key Performance Indicators | Q4 2023 (Oct 1 through Dec 31) | 2023 Annual (July 1 through Dec 31) | Total To Date (since 2019) |
|--|--------------------------------------|---|-------------------------------|
| Storm drains or sanitary sewers installed (feet) | 1,631' | 2,181' | 9,131' |
| Sewer or storm laterals installed via separation (# of properties) | 0 | 0 | 0 |
| Sewer mains rehabilitated (feet) (miles) | 13,289' (2.5) | 14,789' (2.8) | 38,289' (7.3) |
| Sewer laterals inspected (# of properties) | 173 | 373 | 423 |
| Sewer laterals renewed (# of properties) (feet) | 97 (4,440') | 97 (4,415') | 100 (4,565') |
| Backwater valve/surcharge protection (# of properties) | 61 | 101 | 346 |
| Private property internal disconnects (# of properties) | 25 | 38 | 57 |
| Private property separation completed (# of properties) | 0 | 0 | 0 |

Status of Projects: N-2 and N-4 CSO Reduction



Notes: Per the Consent Order, combined sewer overflows (CSOs) from N-2 and N-4 must be eliminated. Million gallon (MG) goals are per 2018 Integrated Plan.

Status of Projects: Gully Brook & North Meadows CSO Reduction



Notes: Per the Consent Order, CSOs from Gully Brook and North Meadows must be controlled to the 1-year storm. Goal represents the total million gallon (MG) of CSO that occurs in a 1-year storm and typical year.

MDC's Recruiting Efforts for Small, Minority, Women and Disadvantaged Businesses (SBE, MBE, WBE, DBE)

- CT Department of Administrative Services (DAS) SBE/MBE/WBE and SAM.gov Registration Clinic with CT Apex Accelerator, National Association of Women in Construction (NAWIC), and University of Hartford
 - MDC Training Facility – October 18th and November 15th
 - Reviewed new applications
 - Assisted Contractors with recertification application
 - Q&A for new SAM.gov ID process
- Solicited targeted pre-bid attendance for second round of proposal submission from SBE/MBE/WBE Contractor's – City of Hartford MBE/WBE List, and CT DAS Vendor Search
- Advertised request for qualifications (RFQ) for Backwater Valve and House Connection Programs in Local Publications
 - Inquiring News, North End Agents, The Hartford News, and Hartford Courant

Brought to you by Industry Partners

DAS Small/Minority S/MBE Sam.gov Registration

Hands-On Certification Clinics
12:00 PM – 2:00 PM
Space is Limited [15 people per clinic]. Lunch provided.

□ June 21, 2023
□ August 16, 2023
□ September 20, 2023
□ October 18, 2023
□ November 15, 2023

The Metropolitan District (MDC) Training Center
125 Maxim Road
Hartford, CT 06114

Meet with Experts. Get On-Site Help.
Representatives from DAS Supplier Diversity Certification Unit and Connecticut APEX Accelerator (formerly CT PTAC), will be onsite to review your application for CT DAS Supplier Diversity Program SBE/MBE Certification and will assist with SAM.gov registration process that is required for state SBE certification and recertification.

- ✓ Review your application
- ✓ Assist in updating your recertification application
- ✓ Answer your questions
- ✓ And more!

REGISTER TO ATTEND
Space is limited. Lunch Provided. No cost to attend.

REGISTRATION IS REQUIRED.
Select a date(s) to attend.

➔ **Email: Kevin Nodwell at: kevin.nodwell@ct.gov.**
You can register to attend one clinic, or more, as needed. If you register and cannot attend, please let us know in advance as space is limited.

MDC's Seeds of Partnership: Transforming Local Labor Recruitment

- Attended to provide update on MDC bidding and match making opportunities
 - CCIA Annual Meeting & MCC Members Meeting
 - Greater Hartford African American Alliance (GHAAA) Weekly Meetings
 - University of Hartford Internship Event
 - Hartford Public High School – November 17th
 - MDC, District Contractors (BLD Services, Boisvert Plumbing, VMS Construction) and DOT Contractors

MDC

The Metropolitan District's (MDC) Worked-based Learning Program is a paid internship program developed in partnership with various workforce development partners to help build a strong pipeline of knowledgeable workers into the water and wastewater industries.

CONTACT INFORMATION

- themdc.org/careers/
- 555 Main Street
Hartford, CT 06103
- (860) 278-7850 x3268
- @MDCWater
- facebook.com/themetropolitandistrict
- @MDC Hartford

PARTNERSHIPS

- CTECS
- Gateway Community College
- Urban League of Greater Hartford
- Greater Hartford African American Alliance

MDC WORK-BASED LEARNING PROGRAM

PAID INTERNSHIP OPPORTUNITIES


themdc.org

MDC

METROPOLITAN DISTRICT COMMISSION

MDC's Seeds of Partnership: Transforming Local Labor Recruitment

- Attended to provide update on MDC bidding and match making opportunities continued
 - Minority Construction Council (MCC) – Construction Expo & Match Maker Event
 - Bloomfield Community Center – October 6th
 - Training Alliance Partner Award / Recognition Received - [Minority Construction Council - Advancing the cause of minority contractors \(mccforct.org\)](https://mccforct.org)
 - F.A.D. Mechanical (MBE) attended October 11th BWV pre-bid from connection made at the event
- Workforce Development relationship building, including:
 - CCIA and CTECS Work-Based Learning Seminar
 - MDC Work Based Learning Program Brochure
 - MDC, CT Pre-Apprenticeship and CT DOT - Try a Trade Program



Try a TRADE

NOW OFFERING FULL SCHOLARSHIPS FOR HIGH SCHOOL SENIORS

PROGRAM DETAILS
DATES: April 8th - 12th, 2024
TIME: 8:00 am - 2:30 pm
LOCATION: MDC Training Center
125 Maxim Road, Hartford, CT
COST: Full Scholarship for those that are accepted into the program. Transportation may be included. Space is limited - Apply Now! Scan the code or visit CTPAHSTP.com

SCAN ME

The best way to find out if you like something is to give it try!
Try a TRADE is a one week, hands on program to do just that! Join us as we explore several different and profitable career paths through hands on learning! Students will have the opportunity to earn several certificates as well as gain knowledge and a better understanding of each trade and how to apply. Instruction may include Fall Protection, Ladder Safety, Flagger Certification, Work Zone Safety, Fire Extinguisher Safety, Silica Awareness, Concrete Work, OSHA-10 Certification, CPR/AED/First Aid Certification, Hoisting and Rigging, etc. Participants will receive Personal Protective Equipment including a Hard Hat, Safety Glasses, Work Gloves and PPE bag.

- Metropolitan District Commission
- Electricians Union
- Operating Engineers Union
- Iron Workers Union
- Carpenters Union
- Laborers Union

This program is funded by:

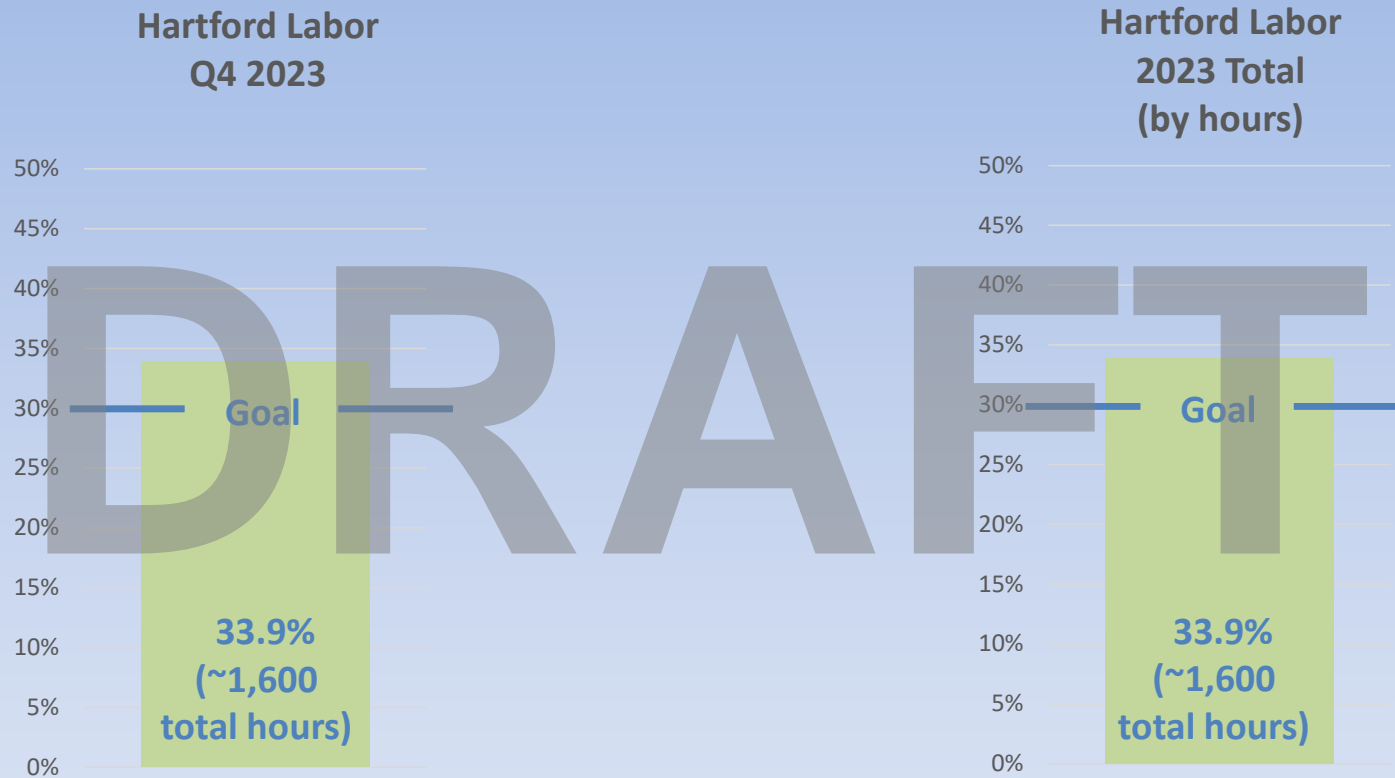
CONNECTICUT
The Metropolitan District
Hartford, Connecticut

MDC's Seeds of Partnership: Transforming Local Labor Recruitment

- 30% Hartford resident workforce goal
- Match making qualified Hartford residents to Prime Contractors working for MDC in North Hartford
 - 1 Hartford residents hired by MDC Contractors in Q4
 - 7 Hartford residents in contact with MDC looking for jobs in Q4
- Work Based Learning Program coordination with local school and/or Non-Government Organizations (NGOs)
 - Coordination with E.C. Goodwin, A.I. Prince Tech., Howell Cheney Tech., and Hartford Public Schools
 - Outreach via school presentations, construction site visits, and job fairs (Learn and Earn Summer 2023 Program revamped to Work-Based Learning Program with Try a Trade Event in Q1)
- Workforce Development at MDC and student training programs (partnership with the CT Pre-apprenticeship, Ready CT and DOT)



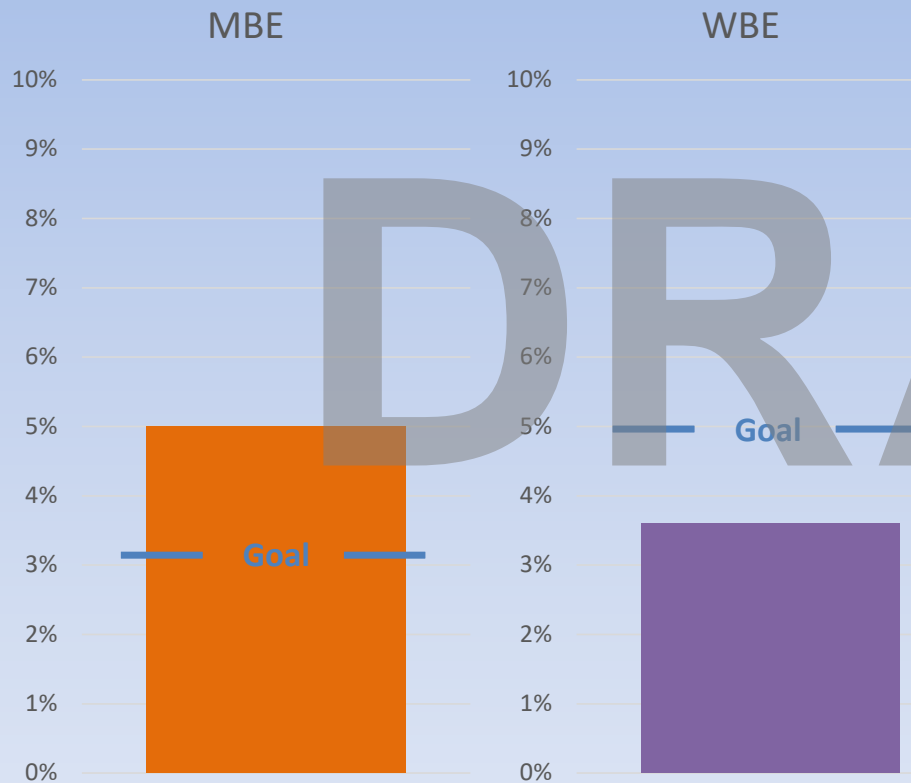
Hartford Labor Status



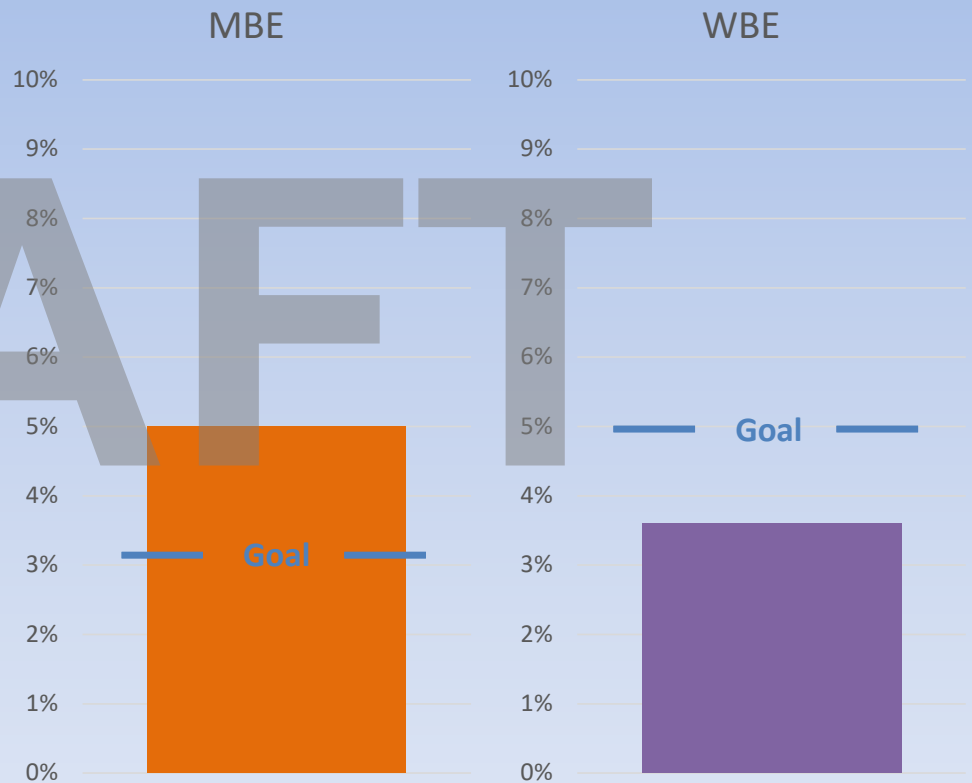
Note: Statistics are based on all Hartford Consent Order projects started after July 2023 under construction. 30% target based on similar City of Hartford goal on municipal projects.

Minority/Women Business Enterprises Status

MBE and WBE Q4 2023 (by \$)



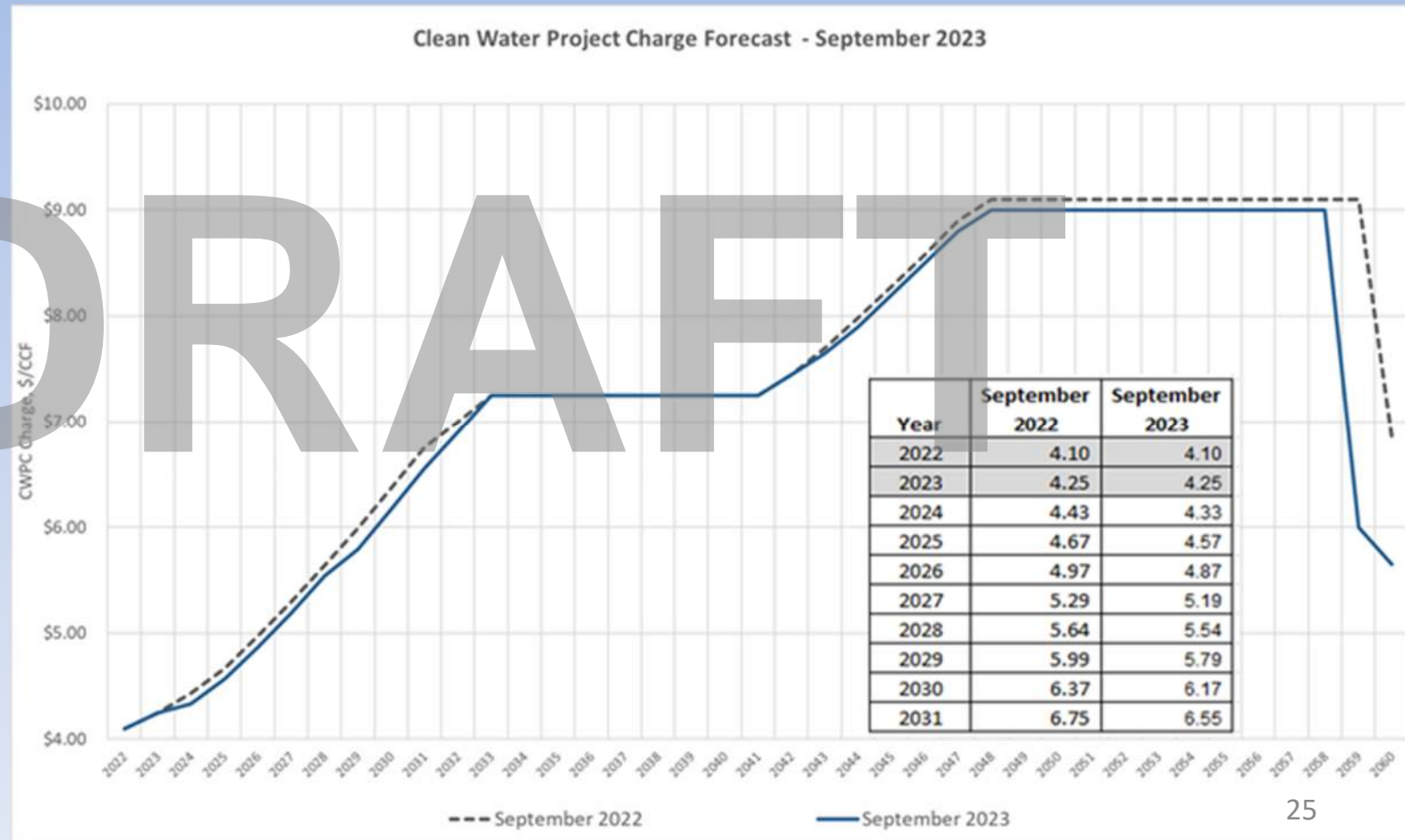
MBE and WBE 2023 Total (by \$)



Note: Statistics are based on all Consent Order related projects under construction, beginning in Q3 of 2023.
MBE and WBE targets based on CT DEEP Clean Water Fund (CWF) goals

Clean Water Project Charge (CWPC)

Significant change in plan has not resulted in any additional CWPC charges than originally projected in September 2022 by receiving additional grant money from CT DEEP and deferring many projects in original Integrated Plan to the 2030s and beyond (next slide)



Deferred Projects from 2018 Integrated Plan

| Original Phase 1 CWP/IP Project | Original End Date | Revised End Date |
|---|-------------------|------------------|
| SM-2 Improvements | 2024 | 2030 - 2040 |
| Cemetery Brook Area Large Diameter Rehab | 2025 | 2030 - 2040 |
| Farmington and Homestead Ave Large Diameter Rehab | 2026 | 2030 - 2040 |
| New North Branch Interceptor Improvements | 2027 | 2030 - 2040 |
| Kane Brook (S-8 & S-13) | 2027 | 2030 - 2040 |
| Homestead Avenue Interceptor Improvements (Design Only) | 2029 | 2030 - 2040 |
| Gully Brook Area Large Diameter Rehab (Part 1) | 2029 | 2030 - 2040 |
| Gully Brook Area Large Diameter Rehab (Part 2) | 2029 | 2030 - 2040 |
| N-12 Sewer Separation and CMOM | 2029 | 2030 - 2040 |
| South Hartford Conveyance & Storage Tunnel (SHCST) Contract 4 | 2029 | 2030 - 2040 |
| Small Diameter Sewer Rehab Program | 2029 | 2030 - 2040 |
| Newington SSO Separation | 2026 | 2030 - 2040 |
| Wethersfield SSO Separation | 2026 | 2030 - 2040 |
| Franklin Avenue Area Sewer Relocations | 2026 | 2030 - 2040 |
| Wethersfield Trunk Sewer (Design Only) | 2028 | 2030 - 2040 |

- In addition, the Downtown Tunnel was deferred to beyond 2050 (if needed)

Closing Remarks

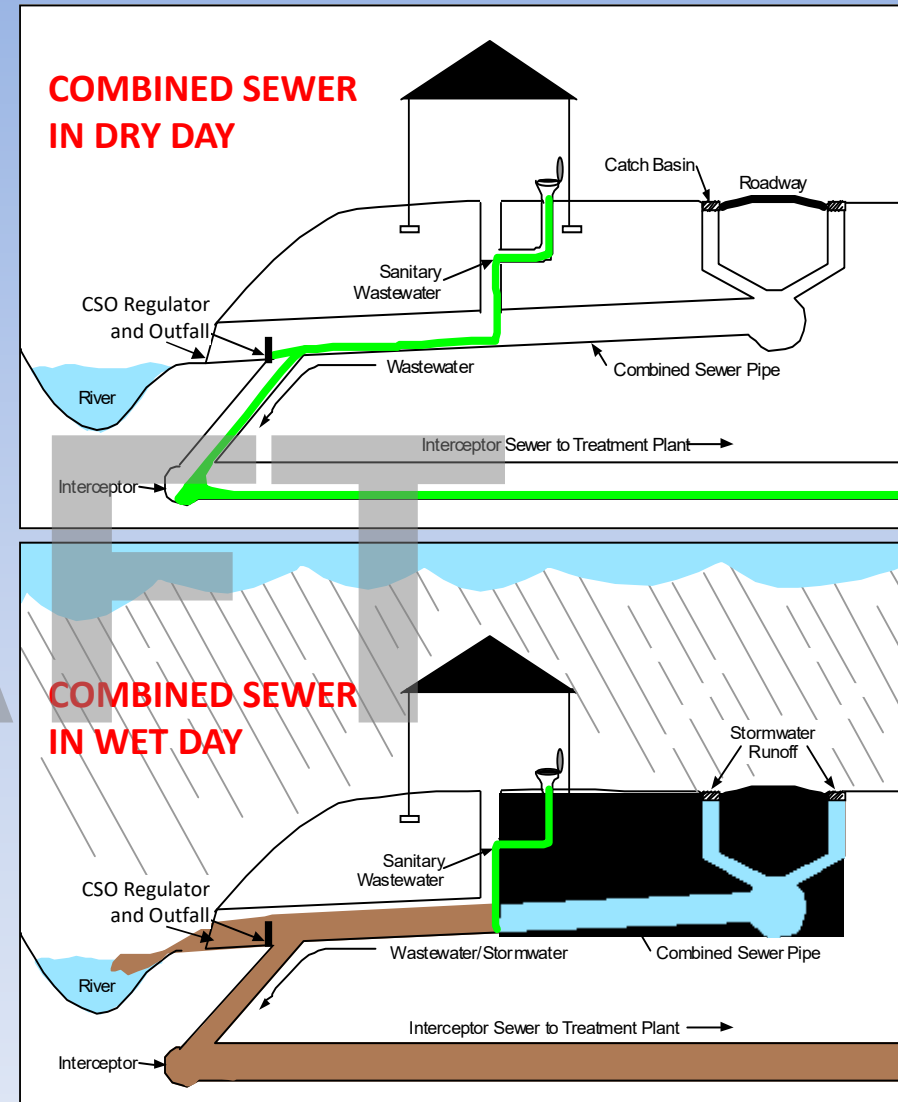
- Many ongoing initiatives and projects
- Many ways to **stay informed**
 - Visit - <https://themdc.org/north-hartford-sewer-improvement-projects/>
 - Via your local NRZ
- Quarterly Consent Order Meetings
 - Second Thursday of the months of March, June, September, and December
 - Next Quarterly Report Meeting = June 13, 2024 (Q1 2024)
 - Each meeting will also be virtual
- Comments and Questions

List of Acronyms

- AFSCME = American Federation of State, County and Municipal Employees
- AHNA = Asylum Hill Neighborhood Association
- BWV = Backwater Valve
- CSO = Combined Sewer Overflow
- CT DEEP = Connecticut Department of Energy and Environmental Protection
- CWF = Clean Water Fund
- CWPC = Clean Water Project Charge
- DAS = Department of Administrative Services
- DBE = Disadvantaged Business Enterprise
- EPA = Environmental Protection Agency
- GHAAA = Greater Hartford African American Alliance
- IP/CSO LTCP = Integrated Plan/CSO Long-Term Control Plan
- MBE = Minority-Owned Business Enterprise
- MCC = Minority Construction Council
- MG = Million Gallons
- NAWIC = National Association of Women in Construction
- NBPR = North Branch Park River
- NGOs = Non-Government Organizations
- NRZs = Neighborhood Revitalization Zones
- PPID = Private Property Inflow Disconnect
- Q3 = Quarter 3 (period from July 1, 2023 to September 30, 2023)
- RFP = Request for Proposal
- RFQ = Request for Qualifications
- ROW = right-of-way
- SBE = Small Business Enterprise
- SHCST = South Hartford Conveyance & Storage Tunnel
- SSES = Sanitary Sewer Evaluation Survey
- SSO = Sanitary Sewer Overflow
- WBE = Women-Owned Business Enterprise

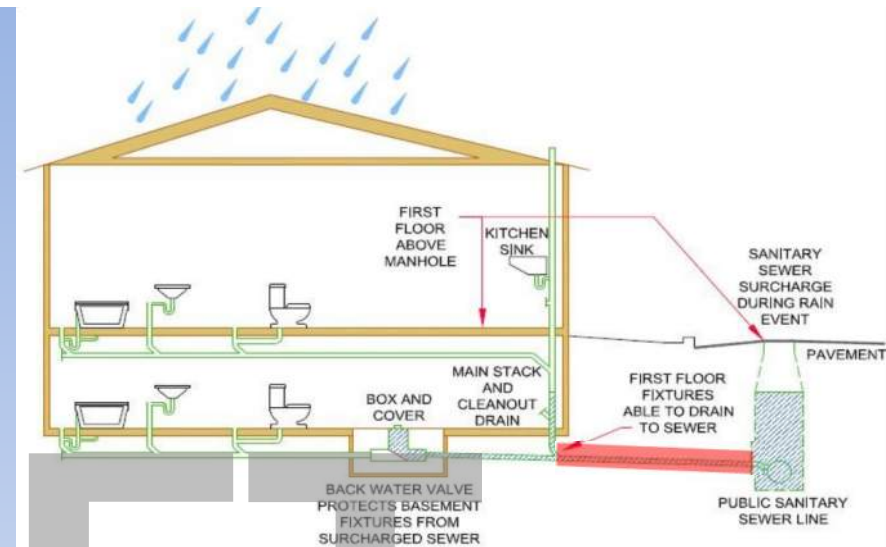
Common Terms & Definitions

- **Separate/sanitary sewer**
 - pipe designed to only convey wastewater
 - how sewers are built now, all member towns except Hartford
- **Storm drain**
 - pipe designed to convey only stormwater
- **Combined sewer**
 - pipe designed to convey **both** sanitary and stormwater (including catch basins)
 - How sewers were built 100 years ago
 - Issues with Combined Sewers:
 - **Dry Day:** No issues, enough capacity for household sewage (toilet, showers, etc)
 - **Wet Day:** Stormwater enters sewer (example: through catch basins). The combined sewer becomes too full, causing overflows (CSOs) into streams/rivers



Common Terms & Definitions

- **Lateral/House Connections**
 - Pipe (shown in red) connecting the wastewater from homes to the District's sewer main
- **Combined Sewer Overflow (CSO)**
 - condition that occurs when wet weather flows in a combined sewer system exceed the treatment capacity at the plant and/or in the pipes, causing it to discharge flow into typically a storm drain or river (via a CSO regulator and outfall)
 - Example: "N-2" and "N-4"
- **Sanitary Sewer Overflow (SSO)**
 - a condition that may occur due to blockage/clog in a pipe, broken infrastructure, or due to significant rainfall



Consent Order Projects: North Hartford Updates

Further information and regular updates on status of each North Hartford project can be found on the District's website:

- **Overall progress:** <https://themdc.org/north-hartford-sewer-improvement-projects/>
- **Expedited Sewer Separation Contracts:**
 - **Durham Street:** <https://themdc.org/north-hartford-sewer-improvement-projects/durham-street-sewer-separation/>
 - **Woodstock and Branford Streets:** <https://themdc.org/north-hartford-sewer-improvement-projects/expedited-sewer-separation-contracts-in-north-hartford/>
 - **Westland Street Area Sewer Separation:** <https://themdc.org/north-hartford-sewer-improvement-projects/westland-street-sewer-separation/>
- **Tower Ave Area Sewer Rehabilitation:** <https://themdc.org/north-hartford-sewer-improvement-projects/sewer-lateral-rehabilitation/>
- **Sewer & Lateral Rehabilitation in North Branch Park River Drainage Area:** <https://themdc.org/north-hartford-sewer-improvement-projects/sewer-lateral-rehabilitation-in-north-branch-park-river-drainage-area/>
- **Sewer & Lateral Rehabilitation in North Meadows Drainage Area (NM 5/6/7):** <https://themdc.org/north-hartford-sewer-improvement-projects/sewer-lateral-rehabilitation-in-north-meadows-drainage-area-nm-5-6-7/>
- **Sewer & Lateral Rehabilitation in Gully Brook Drainage Area:** <https://themdc.org/north-hartford-sewer-improvement-projects/sewer-lateral-rehabilitation-in-gully-brook-drainage-area/>
- **North Branch Park River Drainage Study:** <https://themdc.org/north-hartford-sewer-improvement-projects/north-branch-park-river-drainage-study/>