



Integrated Plan Implementation Quarterly Report Q3 2023 (July 1 to September 30)

December 14, 2023



Introductions and Reason for Public Meeting

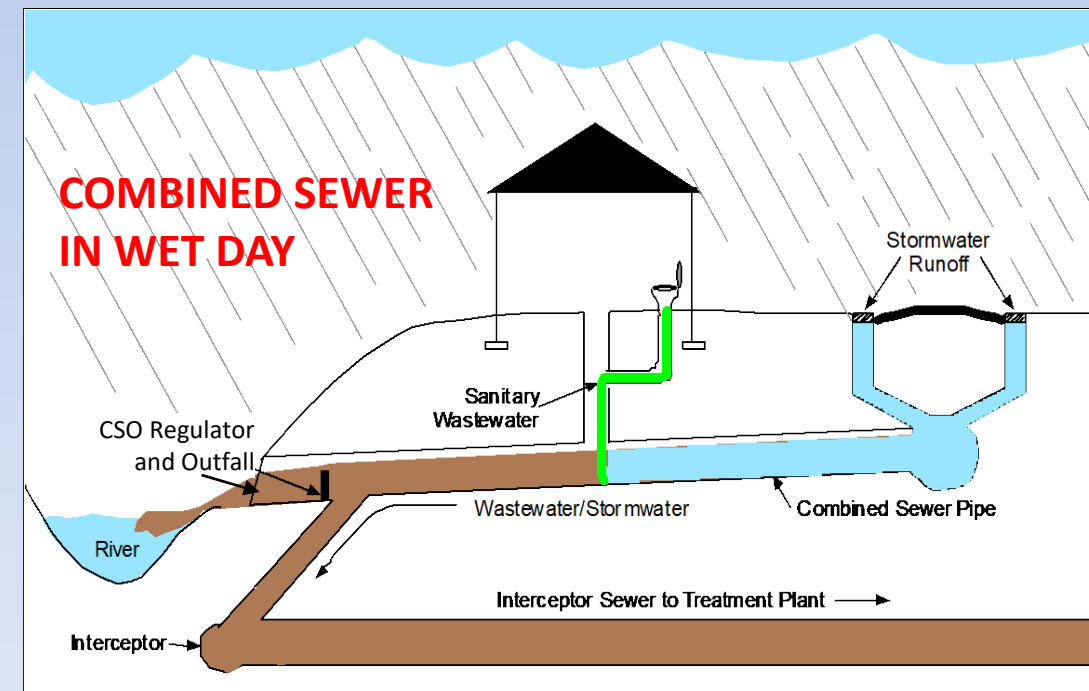
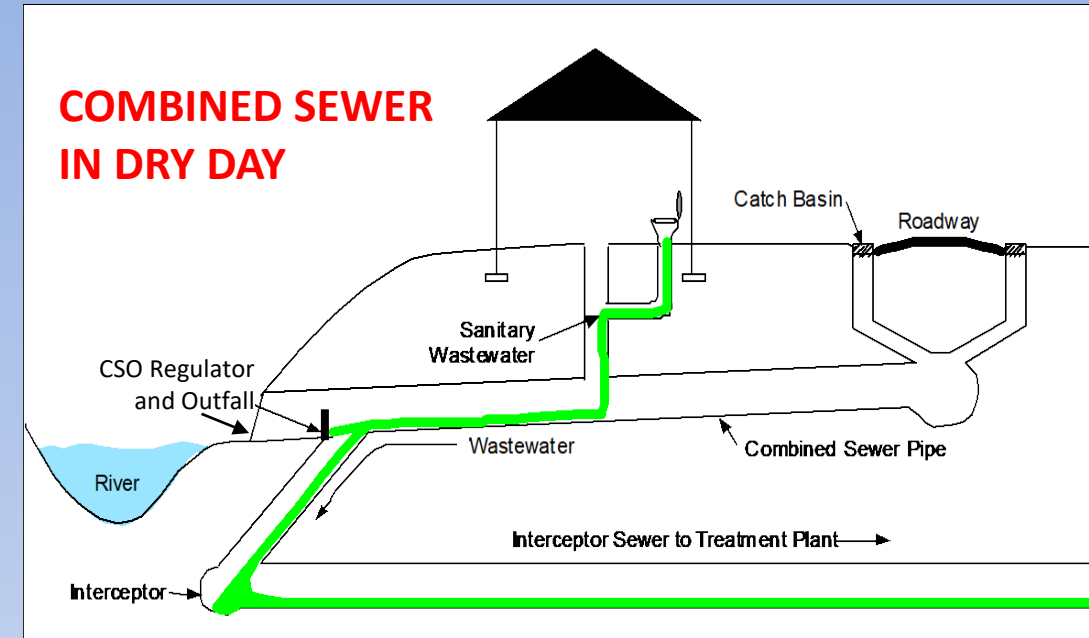
- Welcoming Remarks
- Public Comments
- Introductions
- We are here today to provide quarterly update on MDC's Integrated Plan, with current focus on North Hartford
 - Quarterly Report from July 1, 2023 to September 30, 2023 (Q3 2023)
 - An update on projects completed and under construction
 - A schedule for projects under construction or yet to start construction
 - A status of use of minority and disadvantaged business enterprises, including efforts and success at recruiting labor and contractors from the area where projects are or will be occurring
 - Next Quarterly Report Meeting = March 14, 2024 (Q4 2023)
 - Will also include 2023 Annual Report

Agenda

- Recent changes to the MDC's Integrated Plan and Consent Order, including focus on North Hartford
- Quarterly Consent Order reporting requirements
- Overview of Consent Order projects in:
 - North Hartford
 - Hartford (outside of North Hartford)
 - Outside Hartford
- Update on key performance indicators
- MDC's recruiting efforts for Small, Minority, Women and Disadvantaged Businesses (SBE, MBE, WBE, DBE) and Local Labor
- Impacts of revised Integrated Plan on the Clean Water Project Charge
- Closing remarks

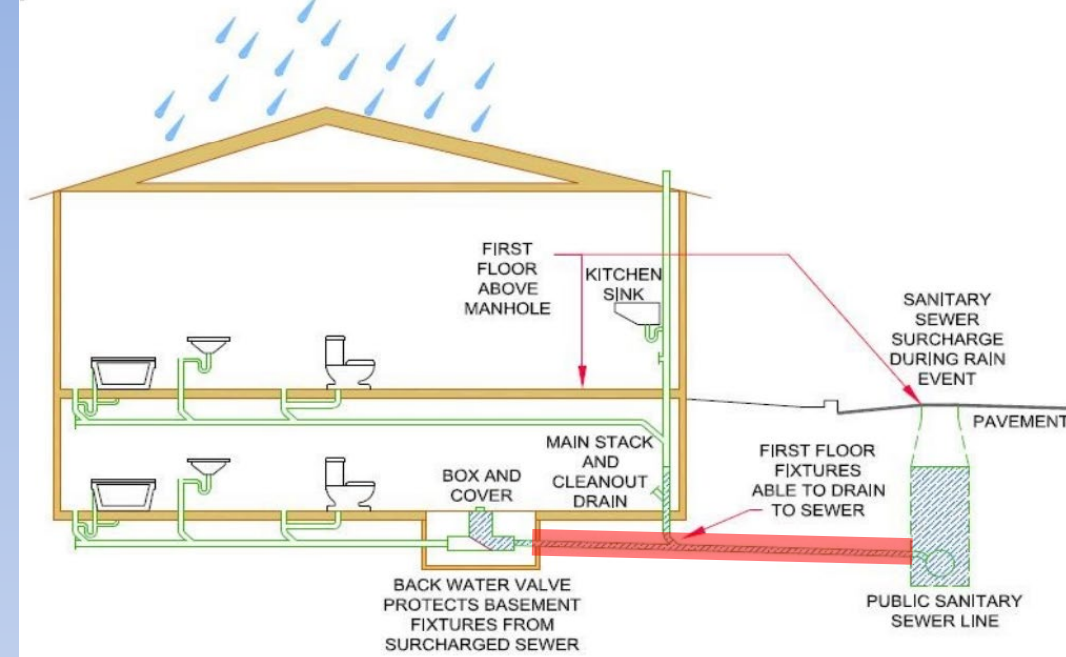
Common Terms & Definitions

- **Separate/sanitary sewer**
 - pipe designed to only convey wastewater
 - how sewers are built now, all member towns except Hartford
- **Storm drain**
 - pipe designed to convey only stormwater
- **Combined sewer**
 - pipe designed to convey **both** sanitary and stormwater (including catch basins)
 - How sewers were built 100 years ago
 - Issues with Combined Sewers:
 - **Dry Day:** No issues, enough capacity for household sewage (toilet, showers, etc)
 - **Wet Day:** Stormwater enters sewer (example: through catch basins). The combined sewer becomes too full, causing overflows (CSOs) into streams/rivers

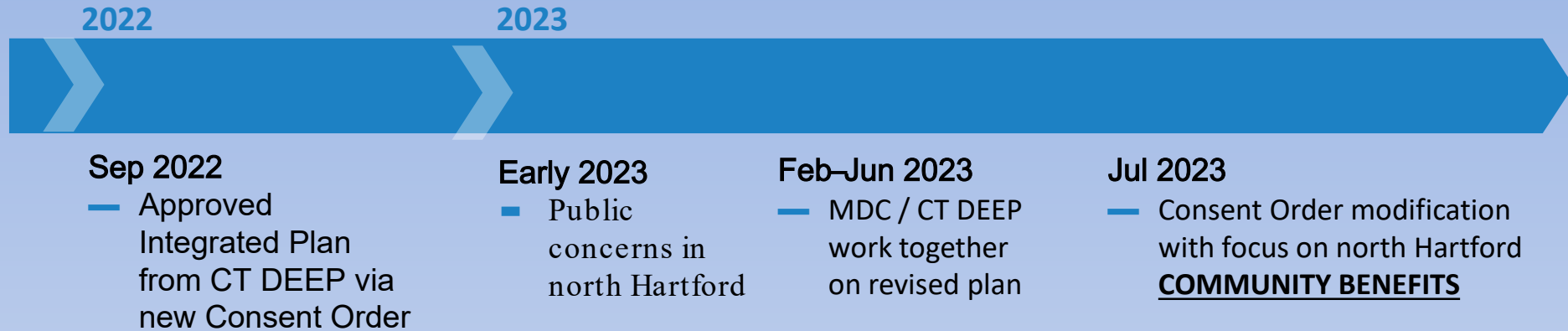


Common Terms & Definitions

- **Lateral/House Connections**
 - Pipe (shown in red) connecting the wastewater from homes to the District's sewer main
- **Combined Sewer Overflow (CSO)**
 - condition that occurs when wet weather flows in a combined sewer system exceed the treatment capacity at the plant and/or in the pipes, causing it to discharge flow into typically a storm drain or river (via a CSO regulator and outfall)
 - Example: "N-2" and "N-4"
- **Sanitary Sewer Overflow (SSO)**
 - a condition that may occur due to blockage/clog in a pipe, broken infrastructure, or due to significant rainfall



Integrated Planning Changes: MDC Shifted Focus to North Hartford



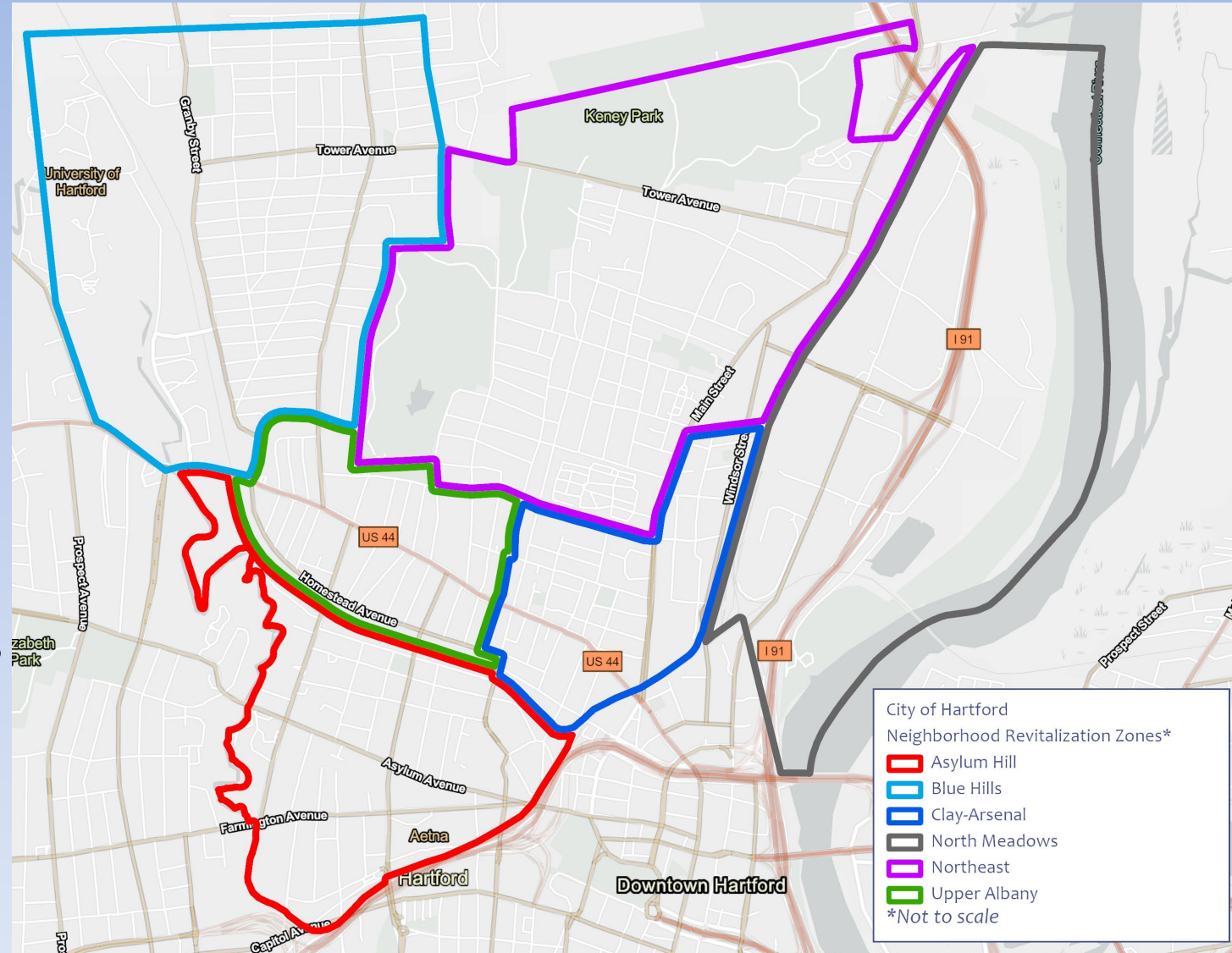
- MDC developed a revised plan with a new approach that focuses on **community benefits**, including **private property improvements** consisting of separation, rehabilitation, and surcharge protection
- Revised plan renews infrastructure, addresses **public concerns**, and still reduces CSOs
- Project funding for north Hartford increased from less than \$50M in prior Phase 1 plan to more than \$150M in current plan
- CT DEEP is providing funding (grant) for this private property work as a pilot
- Deferred prior plan projects including those benefiting the Cove, Newington, Rocky Hill, and Wethersfield
- This resulted in **no increase** in Clean Water Project Charge
- MDC met goal of **starting construction in July 2023** in North Hartford
- Multiple construction projects ongoing in North Hartford with more to come
- MDC's intention is to implement findings District-wide going forward as the new model

The North Hartford Area

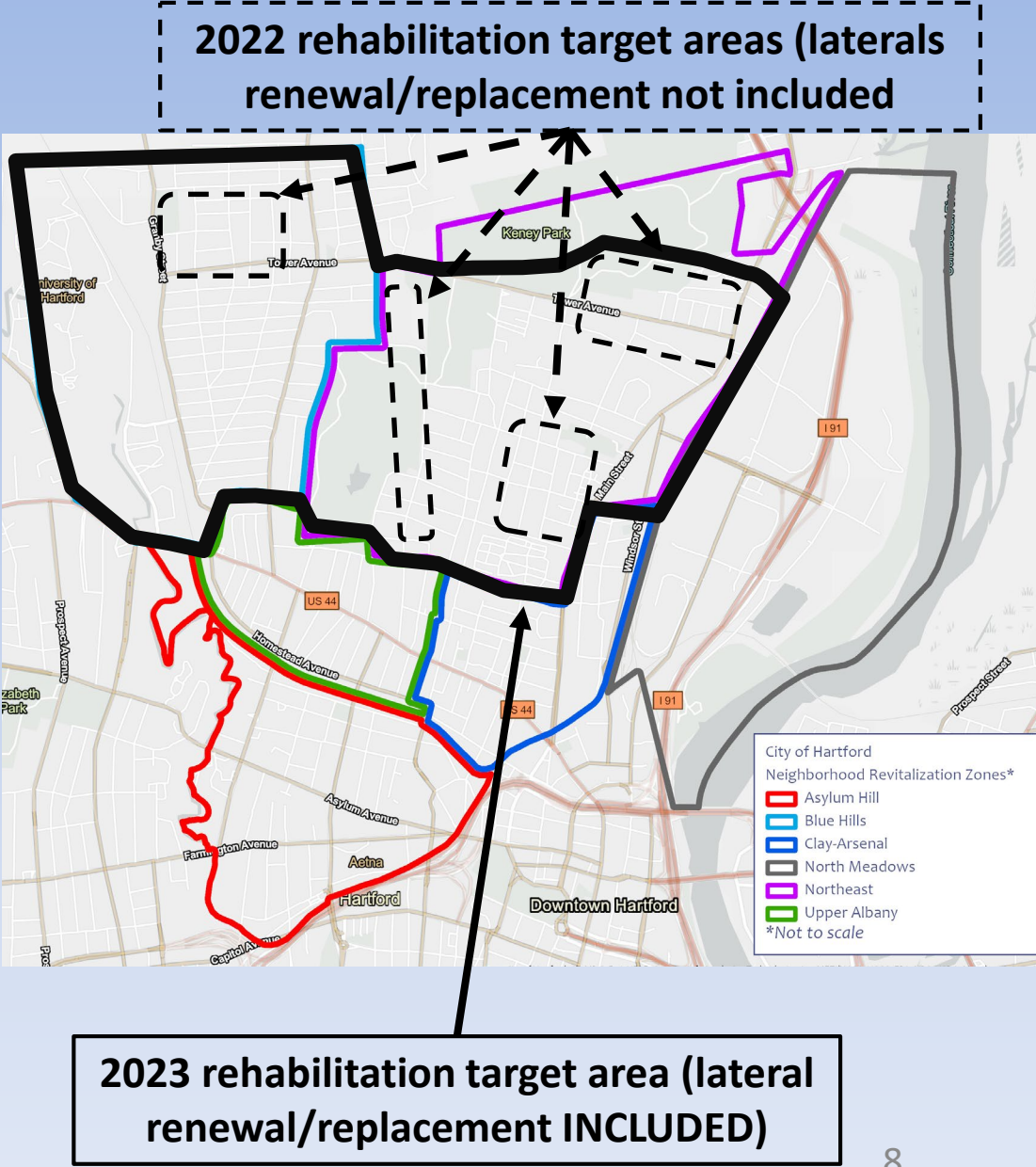
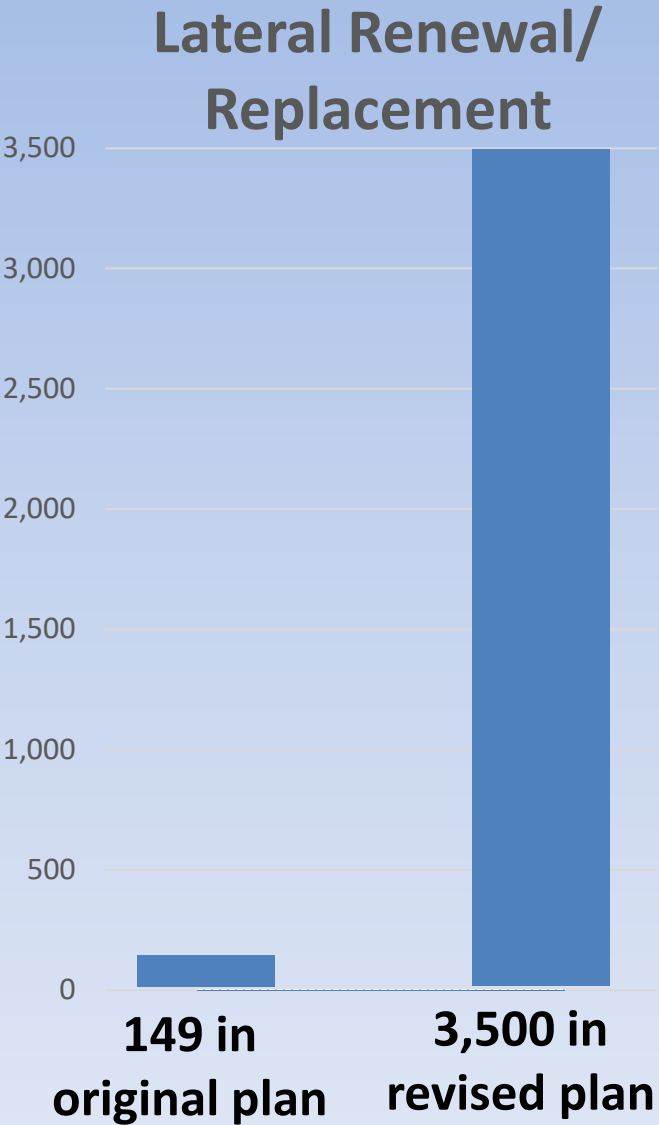
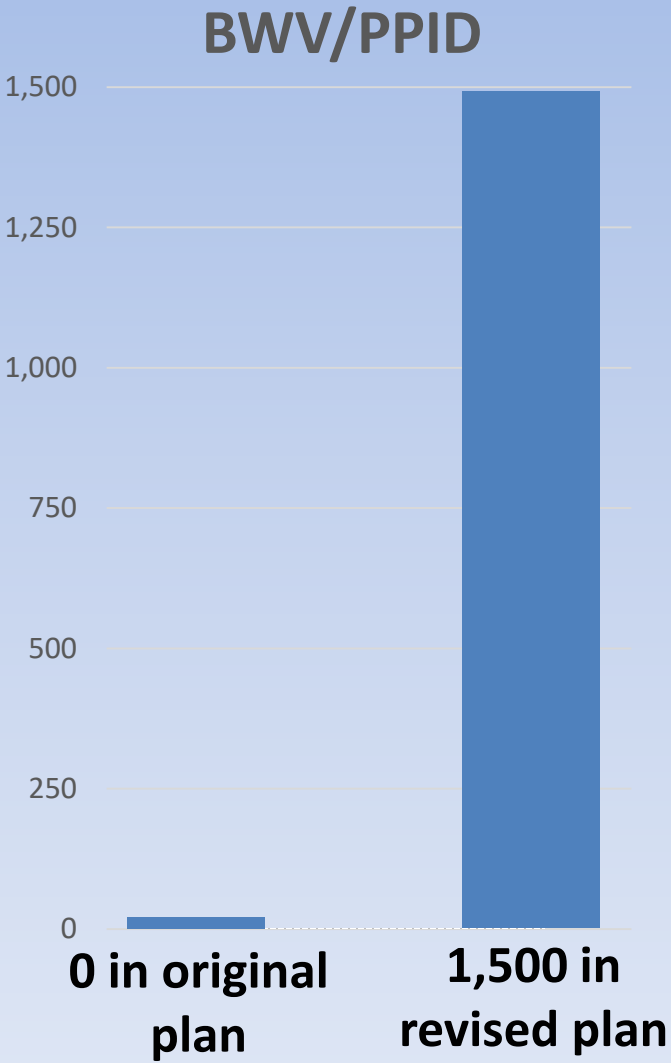
Focus is:

- Sewer separation: remove public and private stormwater from sewer system
- Private property sewer work (which was not the prior focus)
- Reduce flooding
- Reduce sewer surcharge
- Reduce private property backups
- Reduce CSOs to rivers

MDC listened to the North Hartford Community and responded with an altered program that provides immediate community benefit



Community Benefit: Private Property Improvements



Consent Order Modification Reporting Requirements

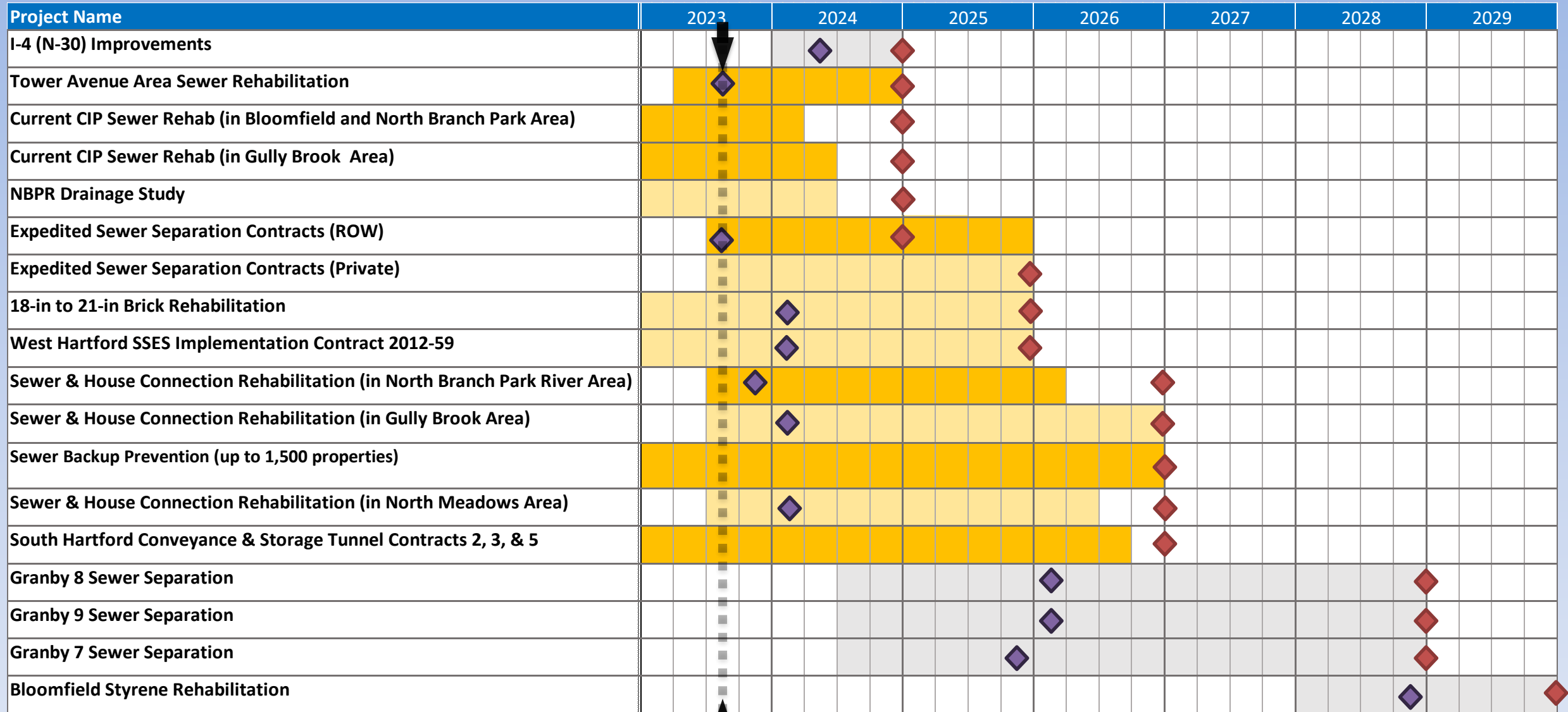
Quarterly Reporting Required under Consent Order Modification

- 1) An update on projects completed and under construction
- 2) A schedule for projects under construction or yet to start construction
- 3) A status of use of minority and disadvantaged business enterprises, including efforts and success at recruiting labor and contractors from the area where projects are or will be occurring
- 4) Other items as requested by Commissioner
 - *Not applicable for this quarter*

Other Items Voluntarily Included by the MDC

- MDC committed to 30% Hartford based workforce for north Hartford work associated with Consent Order modification
 - 30% based on similar City of Hartford goal on municipal projects

Consent Order Projects & Timeline



Not Yet Started
 In Design
 In Construction
 Bid Advertisement
 Consent Order Deadline

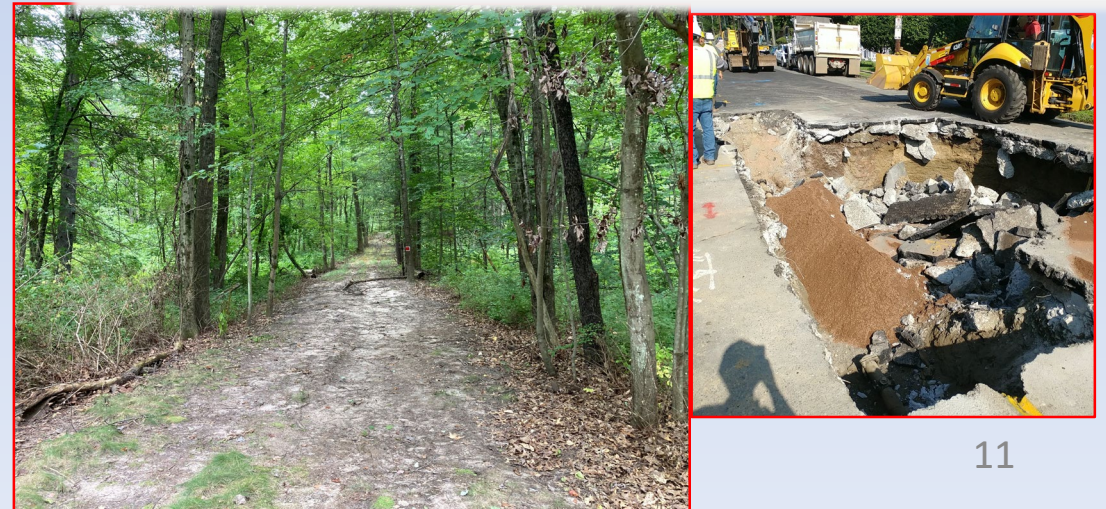
*To view bids, please visit:
<https://themdc.org/ebid>

Additional Sewer Improvement Projects

Non-Consent Order (2019 through Q3 2023)

- Clearing Sewer Easements on Private Property
 - Completed = Bloomfield, Rocky Hill, East Hartford, Windsor
 - Next = Newington, other Member Towns to follow
- Easement Sewer Rehabilitation
 - Bloomfield currently
 - Other Member Towns to be evaluated/scheduled
- On-Call Sewer Rehabilitation/Repair
 - 150,000 feet rehabilitated from 2019 to 2022
 - Over 70,000 feet planned in 2023
 - Performed in all Member Towns
 - Asset management/paving program coordination

| Town | Easement Clearing Length (feet) |
|----------------------|---------------------------------|
| Bloomfield | 98,000 (completed) |
| Rocky Hill | 59,100 (completed) |
| East Hartford | 66,200 (completed) |
| Windsor | 132,300 (completed) |
| Newington | 51,300 (next) |
| Hartford | 55,800 |
| West Hartford | 54,300 |
| Wethersfield | 59,200 |
| Total (feet) | 576,000 |
| Total (miles) | 109 |



Consent Order Projects: North Hartford

North Branch Park River Area

Sewer Rehabilitation:

Rehabilitation of sewer mains and house connections upstream of CSOs N-2 and N-4

Granby 7/8/9 Sewer Separation:
Sewer separation with new storm drains and private property disconnections (final location based on North Branch Park River Study)

Tower Avenue Area

Sewer Rehabilitation:

Rehabilitation of sewer mains and house connections upstream of CSOs NM-2, NM-3, and NM-4

Expedited Sewer Separation

Contracts (Public):

Construction of storm drains in streets

(Additional separation added per MDC review)

North Meadows Area

Sewer Rehabilitation:

Rehabilitation of sewer mains and house connections upstream of CSOs NM-5, NM-6, and NM-7

Expedited Sewer Separation

Contracts (Private):

Private property storm separation (to follow Public Separation Contracts)

North Branch Park River

Drainage Study:

Evaluating the North Branch Park River and surrounding sewer and drainage infrastructure in support of future river improvements and sewer separation

Gully Brook Area

Sewer Rehabilitation:

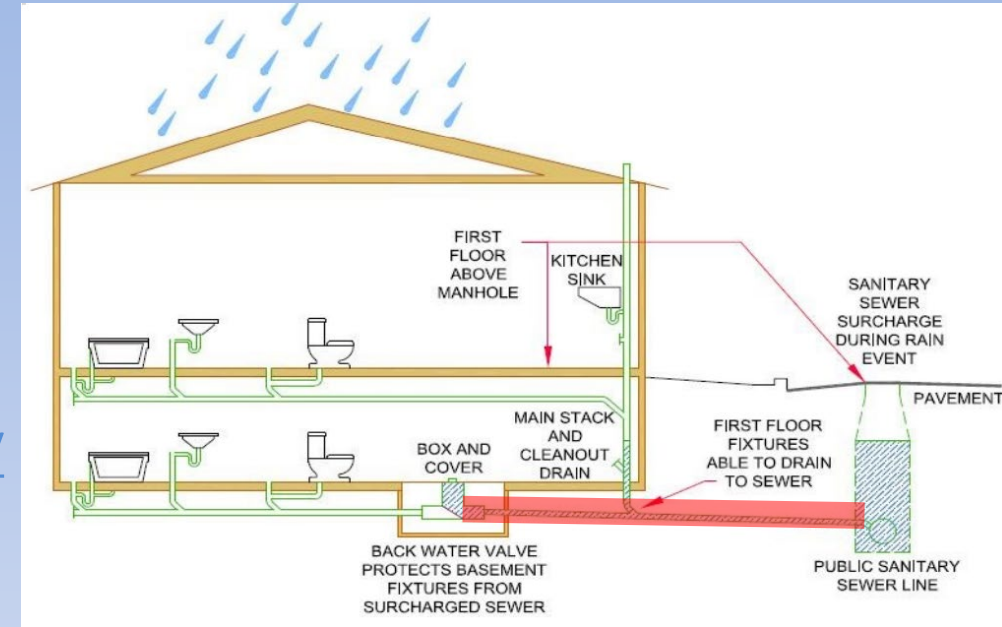
Rehabilitation of sewer mains and house connections upstream of CSO G-13W

- Not Yet Started
- In Design
- In Construction

Consent Order Projects: Private Property Benefit

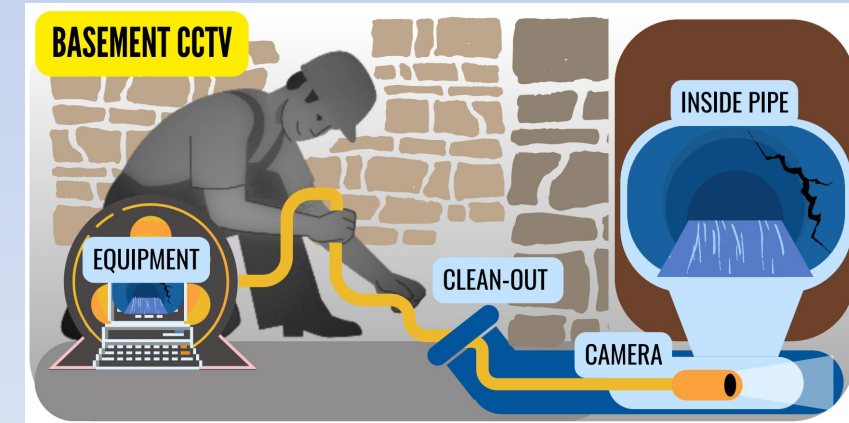
Sewer Backup Prevention Program (“Backwater Valve Program”)

- Separates homes’ foundation drains (via installing sump pumps) and gutters from the sewer system, reducing surcharging during wet weather
- \$12.2 million (up to 1,500 homes) for North Hartford properties (Consent Order project)
- <https://themdc.org/utility-services/backwater-valve-program/>
- To **schedule a free assessment** of your property, contact MDC Utility Services at **(860) 278-7850, ext. 3123**



House Connection Program – voluntarily included by MDC

- MDC Board initiative to provide same benefit District-wide that was being offered to North Hartford residents
- Emergency and non-emergency maintenance and inspection services at no cost to the property owner
- Provides funding for renewal of the house connection, if needed
- <https://themdc.org/new-house-connection-program>



Contractors for both programs have been majority SBE (Small Business Enterprise) in the past and are anticipated to be all SBE moving forward

Consent Order Projects: Outside of North Hartford

Gully Brook Area Sewer Rehabilitation:

Rehabilitation of sewer mains and house connections

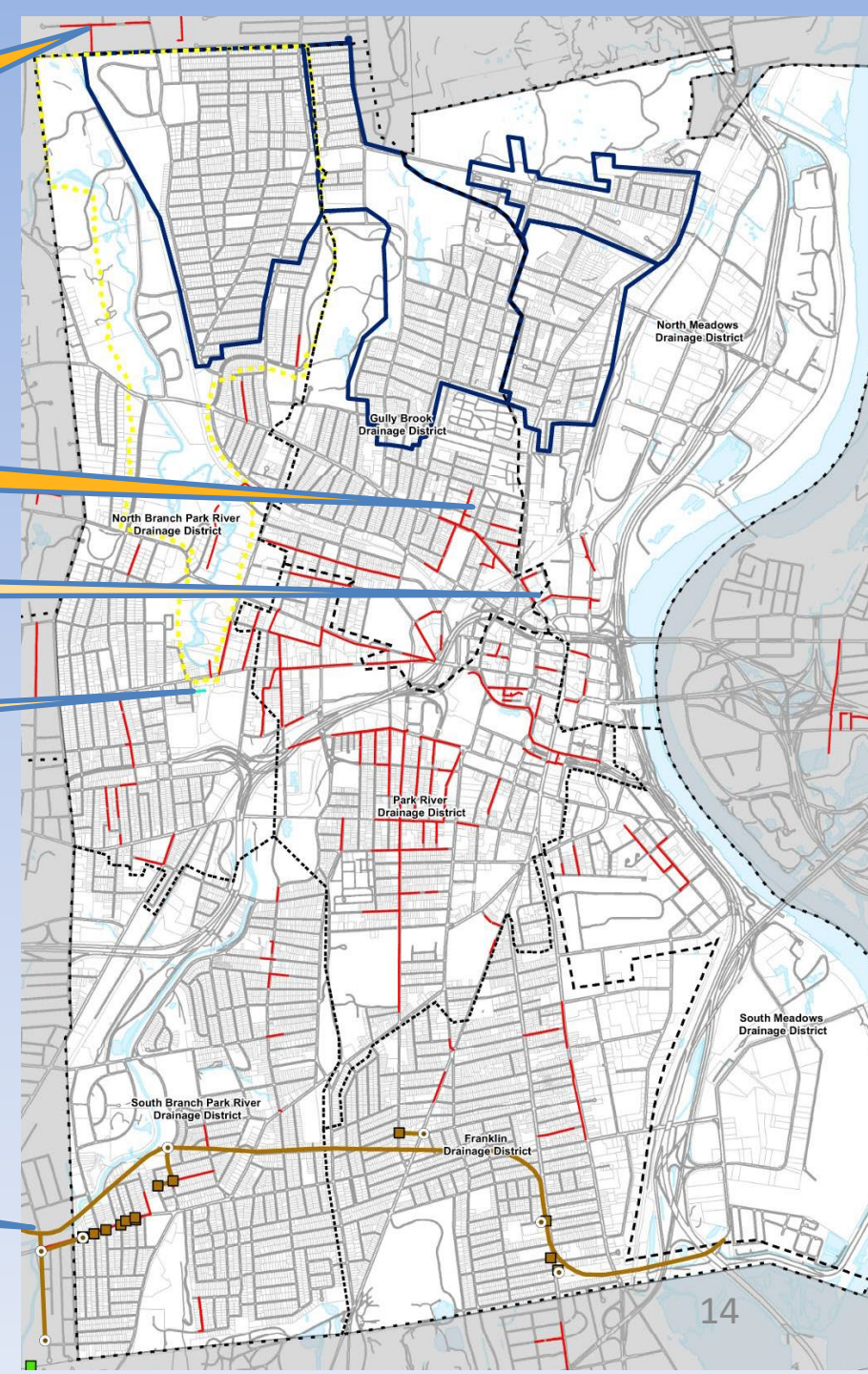
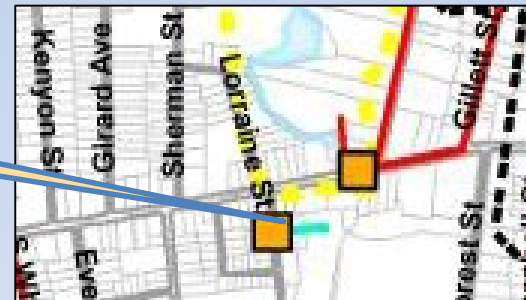
Bloomfield and North Branch Park River Area Sewer Rehabilitation:
Rehabilitation of sewer mains and house connections

18-in to 21-in Brick Rehabilitation:
Rehabilitation of brick sewer mains

I-4 (N-30) Improvements:
Rehabilitation of sewer mains downstream of CSO I-4 (N-30)

South Hartford Conveyance & Storage Tunnel (SHCST) Contracts 2, 3, & 5:
Construction of the SHCST, drop shafts, consolidation conduits and dewatering pumpstation

Not Yet Started In Design In Construction



Consent Order Projects Locations: Outside of Hartford

Bloomfield Styrene Rehabilitation:

Rehabilitation of styrene
rubber sewer mains

Bloomfield and North Branch Park River Area

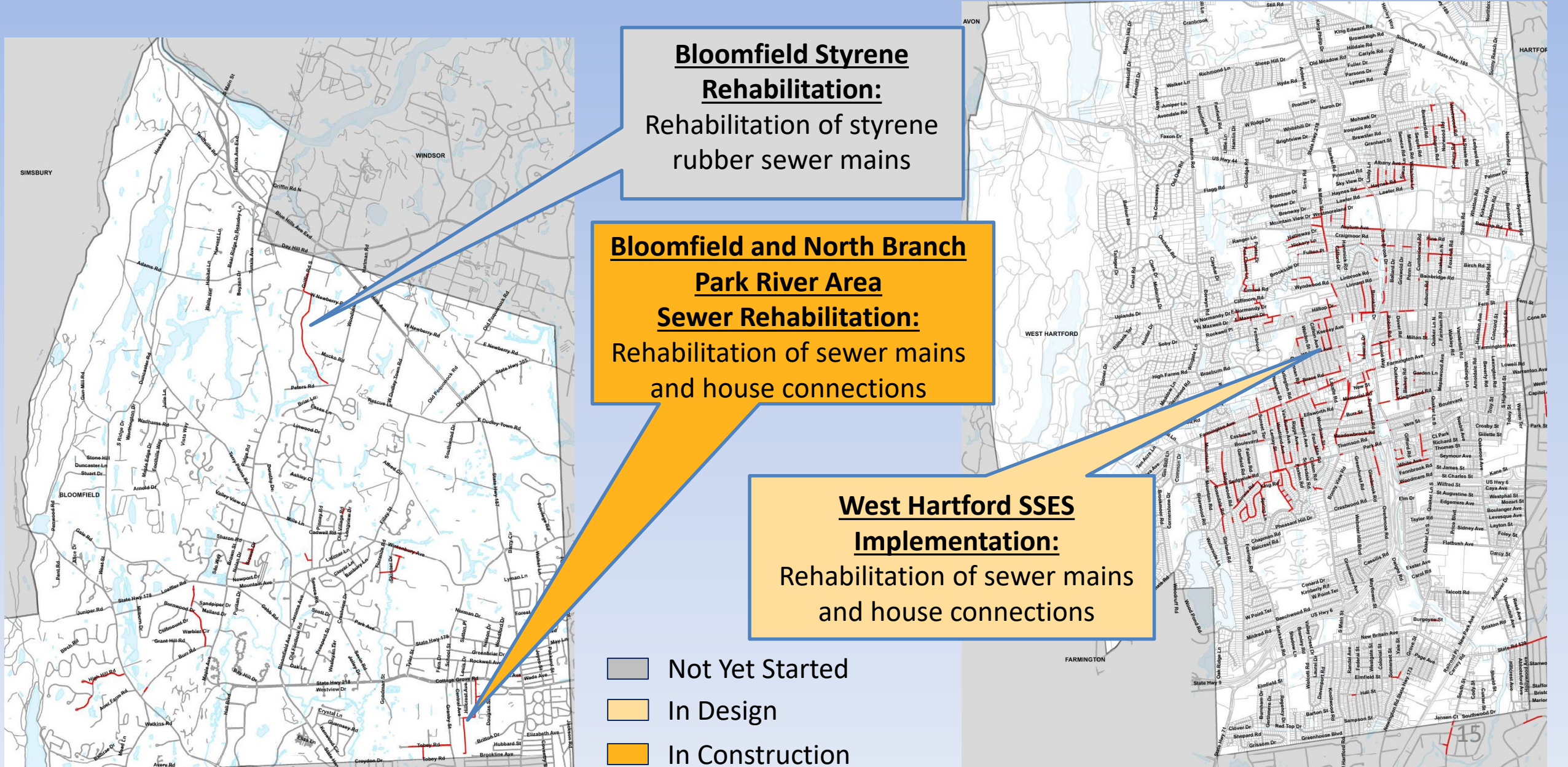
Sewer Rehabilitation:

Rehabilitation of sewer mains
and house connections

West Hartford SSES Implementation:

Rehabilitation of sewer mains
and house connections

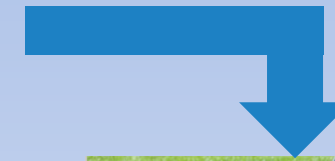
- Not Yet Started
- In Design
- In Construction



Coordination with City of Hartford: Wet Weather Protocols

- Pre storm email shared with City and MDC
 - Review of any clogged catch basins
- City issued public notice not to dump grass and leaves in catch basins
- City leaf collection program
- MDC providing leaf bags to residents at community meetings and other initiatives
- MDC investigates and documents root cause of flooding from complaints received

If you see clogged catch basins please call City ahead of storm to help reduce street flooding



Possibility for Flooding Please See Safety Tips & Resources

Weather forecasts predict that multiple inches of rain could fall between late Thursday night into Saturday. In the event these rains lead to localized flooding, below are some safety tips and resources we hope you find useful.

Preparation is Key

Below please find a reminder of some storm safety tips and guidance on what to do before a flood occurs.

Storm Safety Tips

- Clear any debris from gutters and downspouts to avoid an accumulation of water in and around your property.
- Move furniture and valuables to a safe place, out of a basement or areas that experience flooding.
- On your street, take a look at the nearest catch basin and clear debris from the top to allow rainwater to flow in freely.
- Make sure flash lights are charged or have batteries, and you have some non-perishable food in case the power goes out.
- Keep phones and electronic devices charged.
- Stay home – do not go for walks, as high winds can carry debris or knock down trees.
- Move cars away from trees that could drop branches. Bring in patio furniture. Fill containers with drinking water and fill bathtub with water to flush toilets.



HELP PREVENT CLOGGING DRAINS & STORMWATER POLLUTION



The City of Hartford is seeking your help in reducing clogged sewer drains and stormwater pollutions that comes from grass clippings and other yard waste. Grass clippings blown into the street end up in storm drains where they can build up and cause drainage issues and localized flooding. It can also create hazardous conditions for drivers, motorcyclists, and bicyclists. Along with grass clippings, yard debris and other organic plant material like shrubbery are also a significant source of stormwater pollution.

- **Yard Waste** in streets can clog storm drains and cause drainage and flooding issues by clogging catch basins and pipes, which can then cause water to back up and flood within the drainage system, into streets, or worse, the front yards of properties.
- **Yard Waste** in the stormwater drainage system will decompose and can supercharge the stormwater with nutrients such as nitrogen and phosphorus, causing reduced water quality.

According to the U.S. EPA, phosphorus is one of the most troublesome pollutants in stormwater runoff and it is considered the primary cause of water quality problems in our waters. One bushel of fresh grass clippings can contain 0.1 lbs. of phosphorus—enough to produce 30-50 pounds of algae growth if it finds its way to a lake or river!

Intentionally blowing or placing lawn waste in the street is a violation of City Ordinance. There is no excuse for sweeping grass and/or leaves into the streets, storm drains or waterways.

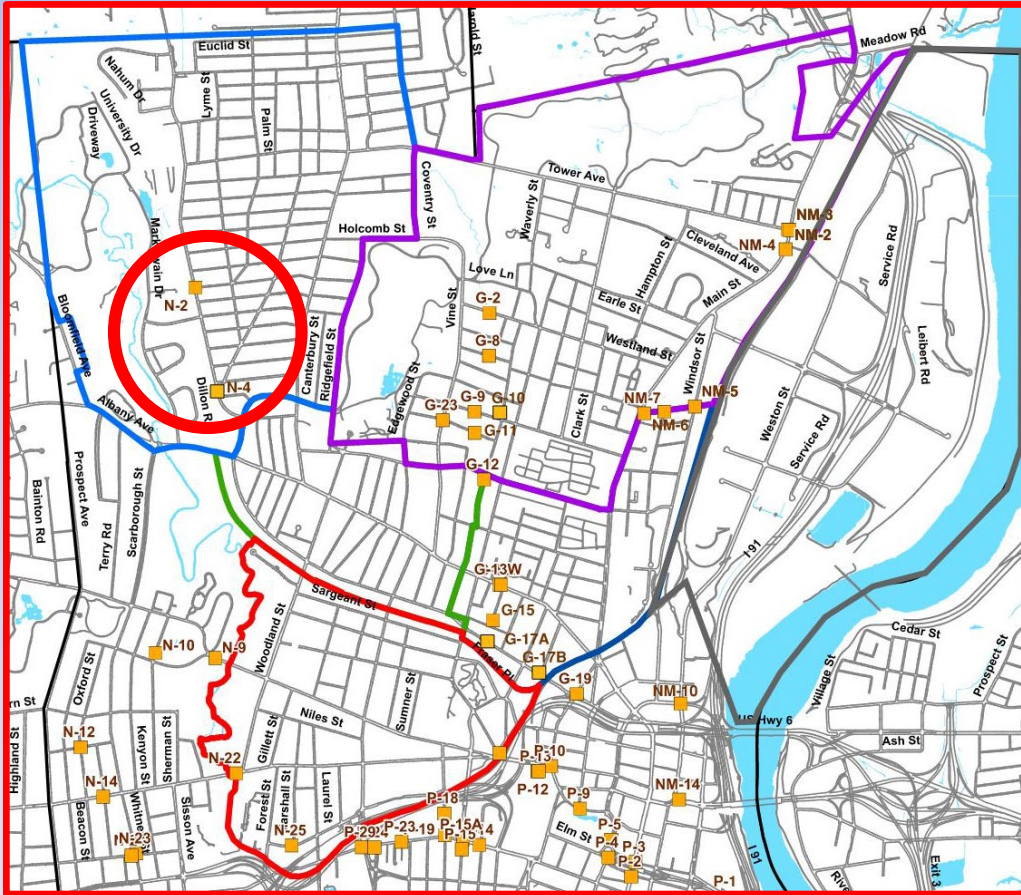
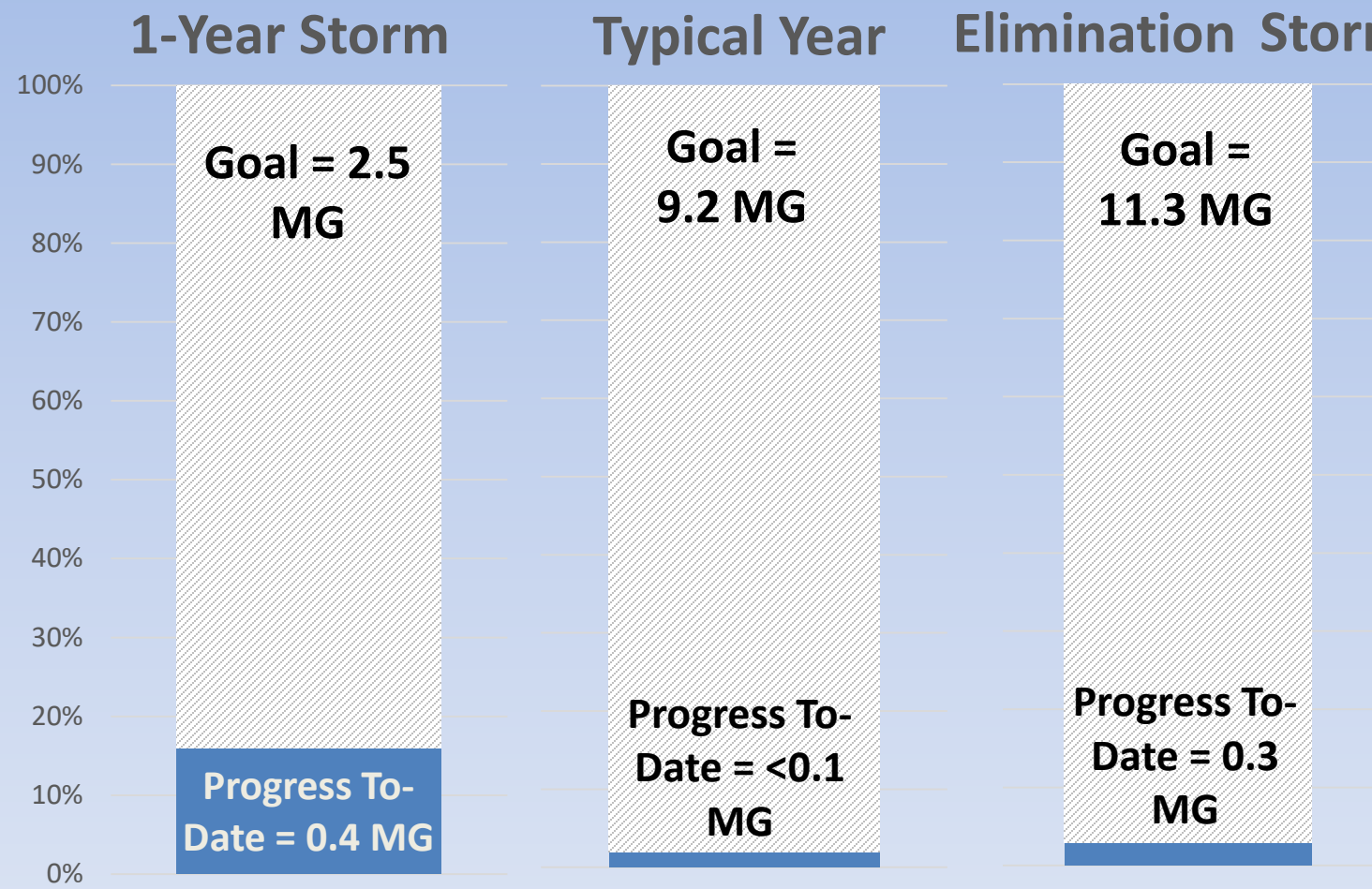
Status of Projects: Key Performance Indicators (District Wide)

| Key Performance Indicators | Q3 2023 (July 1 through Sept 30) | Total To Date (since 2019) |
|--|----------------------------------|----------------------------|
| Storm drains or sanitary sewers installed (feet) | 900' | 30,000' |
| Sewer or storm laterals installed via separation (# of properties) | 0 | 0 |
| Sewer mains rehabilitated (feet) | 29,000' | 288,000' |
| Sewer laterals inspected (# of properties) | 800 | 2,600 |
| Sewer laterals renewed (# of properties) (feet) | 70 (2,000') | 80 (2,500') |
| Backwater valve/surcharge protection (# of properties) | 80 | 862 |
| Private property internal disconnects (# of properties) | 19 | 58 |
| Private property separation completed (# of properties) | 0 | 0 |

Status of Projects: Key Performance Indicators (North Hartford)

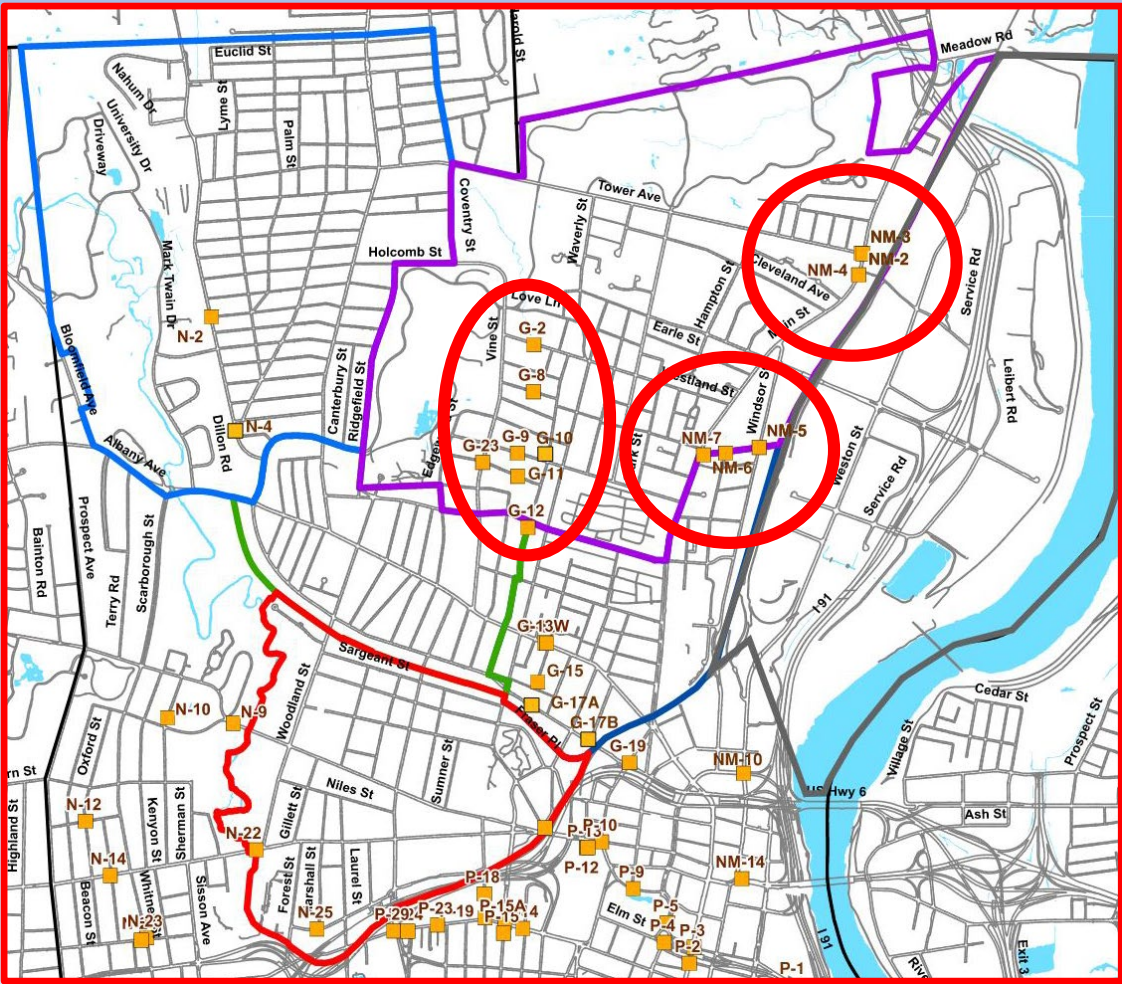
| Key Performance Indicators | Q3 2023 (July 1 through Sept 30) | Total To Date (since 2019) |
|--|----------------------------------|----------------------------|
| Storm drains or sanitary sewers installed (feet) | 550' | 7,500' |
| Sewer or storm laterals installed via separation (# of properties) | 0 | 0 |
| Sewer mains rehabilitated (feet) | 1,500' | 25,000' |
| Sewer laterals inspected (# of properties) | 200 | 250 |
| Sewer laterals renewed (# of properties) (feet) | 0 (0') | 4 (150') |
| Backwater valve/surcharge protection (# of properties) | 40 | 285 |
| Private property internal disconnects (# of properties) | 13 | 32 |
| Private property separation completed (# of properties) | 0 | 0 |

Status of Projects: N-2 and N-4 CSO Reduction



Notes: Per the Consent Order, combined sewer overflows (CSOs) from N-2 and N-4 must be eliminated. Million gallon (MG) goals are per 2018 Integrated Plan.

Status of Projects: Gully Brook & North Meadows CSO Reduction



Notes: Per the Consent Order, CSOs from Gully Brook and North Meadows must be controlled to the 1-year storm. Goal represents the total million gallon (MG) of CSO that occurs in a 1-year storm and typical year.

Importance of North Branch Park River (NBPR) Drainage Study

- When MDC separates the stormwater from the sewer pipes, the stormwater needs a place to go
- Blue Hills area discharges NBPR
- NBPR has sediment buildup (i.e., from streets) and blockages (i.e., from downed trees); needs attention
- Buildups/blockages contribute to street and localized flooding and backups
- Study needed to determine:
 - required flood control and stream improvements (City of Hartford priority)
 - approach to remove stormwater from sewers to eliminate CSOs (MDC priority)
- Study funded by 55% CT DEEP grant, balance split between MDC and City



*For further information, visit: <https://themdc.org/north-hartford-sewer-improvement-projects/north-branch-park-river-drainage-study>

North Branch Park River Drainage Study Update

- River assessment ongoing
- Short term improvements identified
 - City cleaned 96" storm pipe that had tree branches within it
 - Stream improvements identified, such as downed trees
 - Durham Street sewer separation
 - City to clean Park River Conduit inlet
- Completed flow metering
- Conceptual sewer separation design underway
- Study to be completed in 2024



MDC's Recruiting Efforts for Small, Minority, Women and Disadvantaged Businesses (SBE, MBE, WBE, DBE)

- CT Department of Administrative Services (DAS) SBE/MBE/WBE and SAM.gov Registration Clinic with CT Apex Accelerator, National Association of Women in Construction (NAWIC), and University of Hartford
 - MDC Training Facility – August 16th and September 20th
 - Reviewed new applications
 - Assisted Contractors with recertification application
 - Q&A for new SAM.gov ID process
- Solicited pre-bid attendance and proposal submission from SBE/MBE/WBE Contractor's – City of Hartford MBE/WBE List, and CT DAS Vendor Search
- Advertised request for qualifications (RFQ) for Backwater Valve and House Connection Programs in Local Publications
 - Inquiring News, North End Agents, The Hartford News, and Hartford Courant

Brought to you by Industry Partners



DAS Small/Minority S/MBE Sam.gov Registration

Hands-On Certification Clinics
12:00 PM – 2:00 PM
Space is Limited [15 people per clinic]. Lunch provided.

- ☐ June 21, 2023
- ☐ August 16, 2023
- ☐ September 20, 2023
- ☐ October 18, 2023
- ☐ November 15, 2023

The Metropolitan District (MDC) Training Center
125 Maxim Road
Hartford, CT 06114

Meet with Experts. Get On-Site Help.

Representatives from DAS Supplier Diversity Certification Unit and Connecticut APEX Accelerator (formerly CT PTAC), will be onsite to review your application for CT DAS Supplier Diversity Program SBE/MBE Certification and will assist with SAM.gov registration process that is required for state SBE certification and recertification.

- ✓ Review your application
- ✓ Assist in updating your recertification application
- ✓ Answer your questions
- ✓ And more!

REGISTER TO ATTEND

Space is limited. Lunch Provided. No cost to attend.

REGISTRATION IS REQUIRED.
Select a date(s) to attend.

➔ **Email: Kevin Nodwell at: kevin.nodwell@ct.gov.**

You can register to attend one clinic, or more, as needed. If you register and cannot attend, please let us know in advance as space is limited.

MDC's Seeds of Partnership: Transforming Local Labor Recruitment

- Attended to provide update on MDC bidding and match making opportunities
 - MCC Annual Dinner Networking Event
 - MCC Members Meeting
 - Greater Hartford African American Alliance (GHAAA)
 - AFSCME – Staff the Front Lines Job Fair event
 - Department of Labor Veterans Hiring event
 - Asylum Hill Neighborhood Association (AHNA)
coordination with Ted Carroll (Employment Committee Chair)
 - CT Institute for Primary Care, St. Francis Hospital
- Workforce Development relationship building, including:
 - Knox
 - High School Construction Career Exploration



MDC's Seeds of Partnership: Transforming Local Labor Recruitment

- 30% Hartford resident workforce goal
- Match making qualified Hartford residents to Prime Contractors working for MDC in North Hartford
 - 4 Hartford residents hired by MDC Contractors
 - 10 Hartford residents in contact with MDC looking for jobs
- Work Based Learning Program coordination with local school and/or Non-Government Organizations (NGOs)
 - Coordination with E.C. Goodwin, A.I. Prince Tech., Howell Cheney Tech., and Hartford Public Schools
 - Outreach via school presentations, construction site visits, and job fairs (Learn and Earn Summer 2023 Program and July 2023 Minority Construction Council (MCC) Construction Career Fair at A.I. Prince Tech)
- MDC Workforce Development Program
 - 5 Entry Level Positions created at MDC

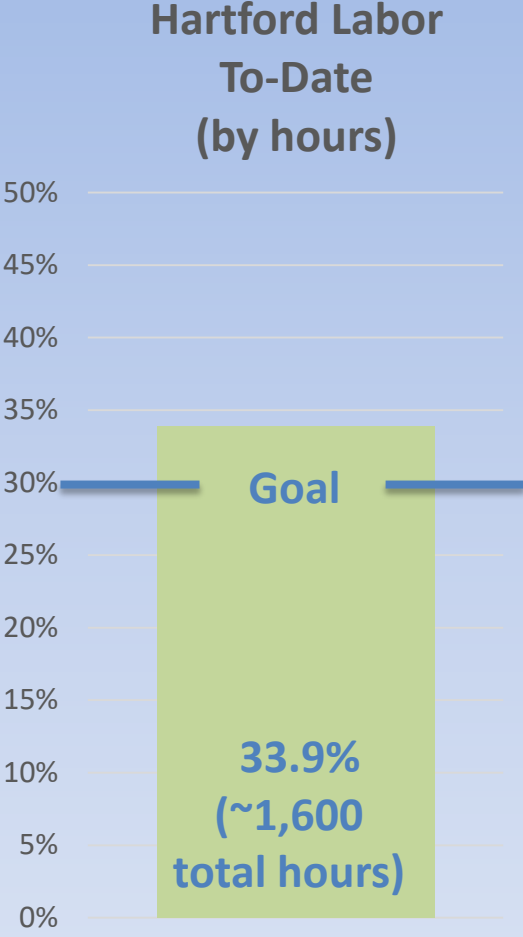
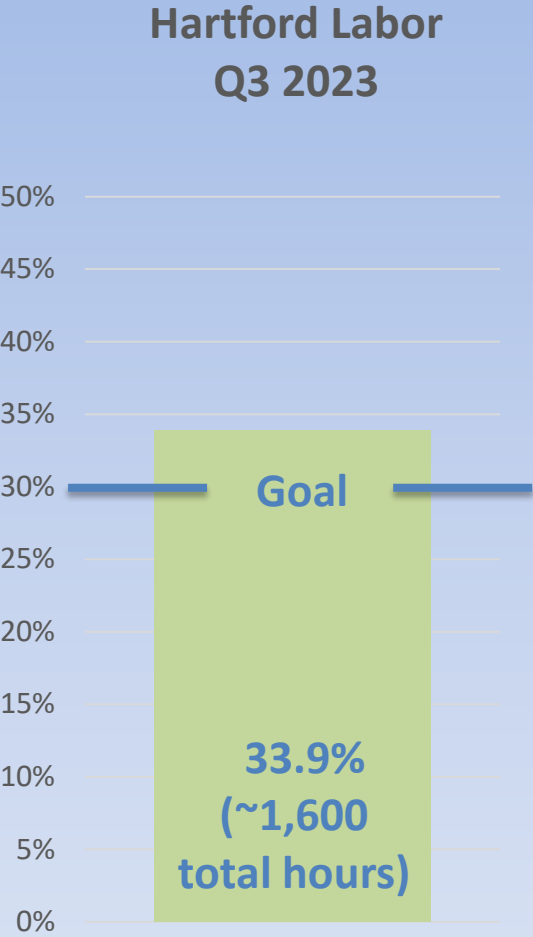


Q4 (October through December 2023) Efforts

- Minority Construction Council (MCC) – Construction Expo & Match Maker Event
 - Bloomfield Community Center – October 6th
 - Training Alliance Partner Award / Recognition Received - [Minority Construction Council - Advancing the cause of minority contractors \(mccforct.org\)](https://mccforct.org)
 - F.A.D. Mechanical (MBE) attended October 11th BWV pre-bid from connection made at the event
- CTECS, DOT, Ready, CT and CT Pre-Apprenticeship Program – Mini Job Fair
 - Hartford Public High School – November 17th, 11:00 am to 1:30 pm
 - MDC, District Contractors (BLD Services, Boisvert Plumbing, VMS Construction) and DOT Contractors
- DAS SBE/MBE/WBE and SAM.gov Registration Clinic with CT Apex Accelerator, The National Association of Women in Construction (NAWIC) and UHART
 - MDC Training Facility - October 18th and November 15th
- Development of student training program (partnership with the CT Pre-apprenticeship, Ready CT and DOT)
 - \$645,000 grant submitted



Hartford Labor Status



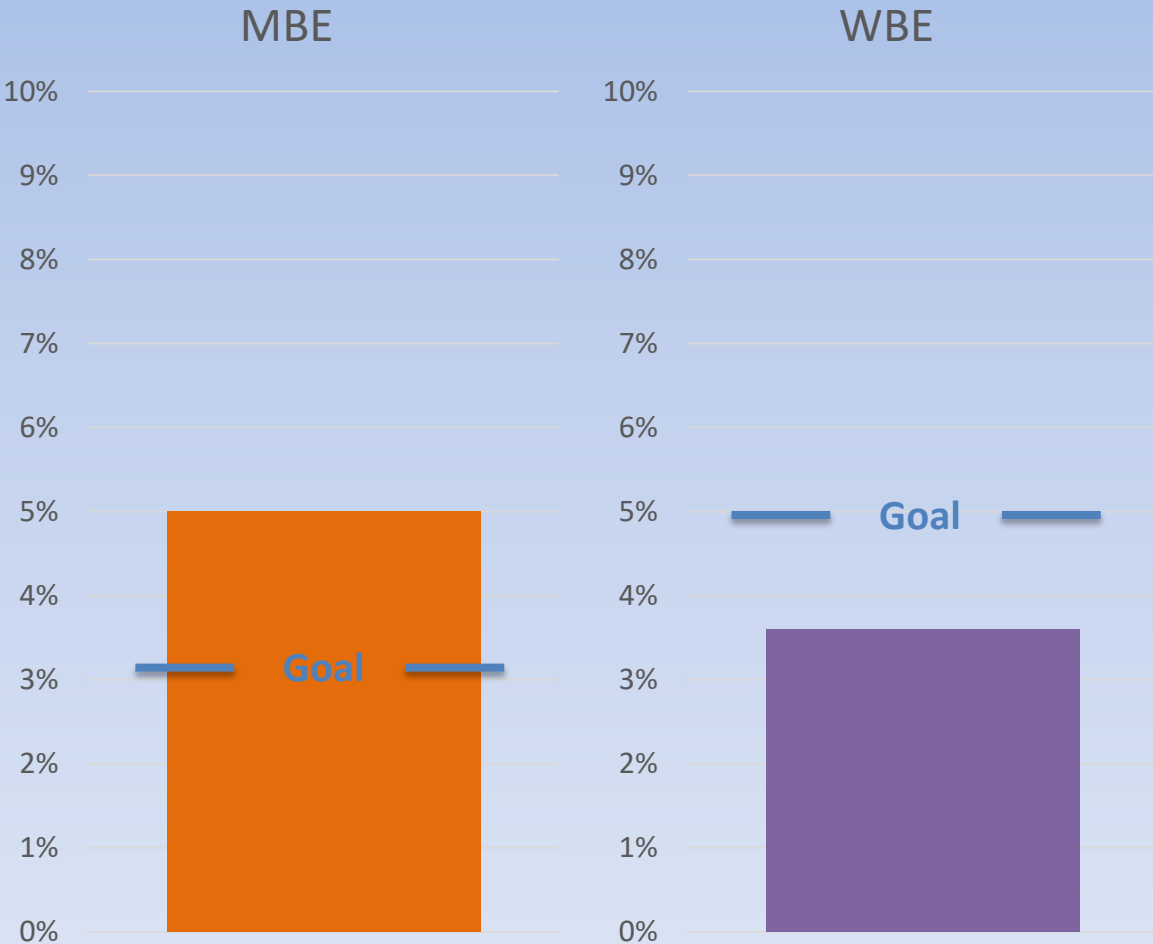
Note: Statistics are based on all Consent Order projects under construction, beginning in Q3 of 2023. 30% target based on similar City of Hartford goal on municipal projects.

Minority/Women Business Enterprises Status

MBE and WBE Q3 2023 (by \$)



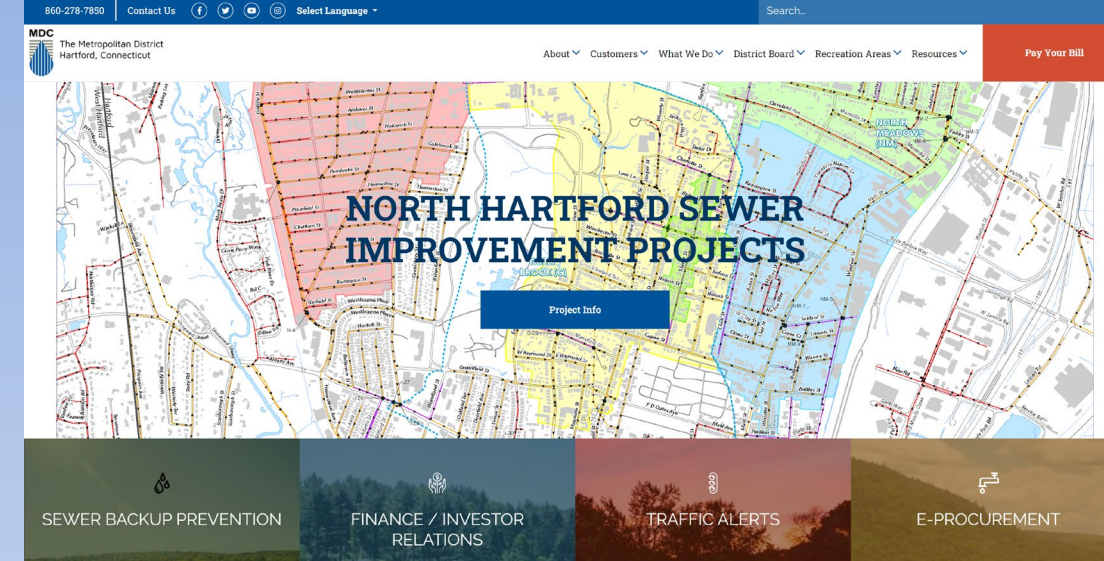
MBE and WBE To-Date (by \$)



Note: Statistics are based on all Consent Order related projects under construction, beginning in Q3 of 2023.
MBE and WBE targets based on CT DEEP Clean Water Fund (CWF) goals

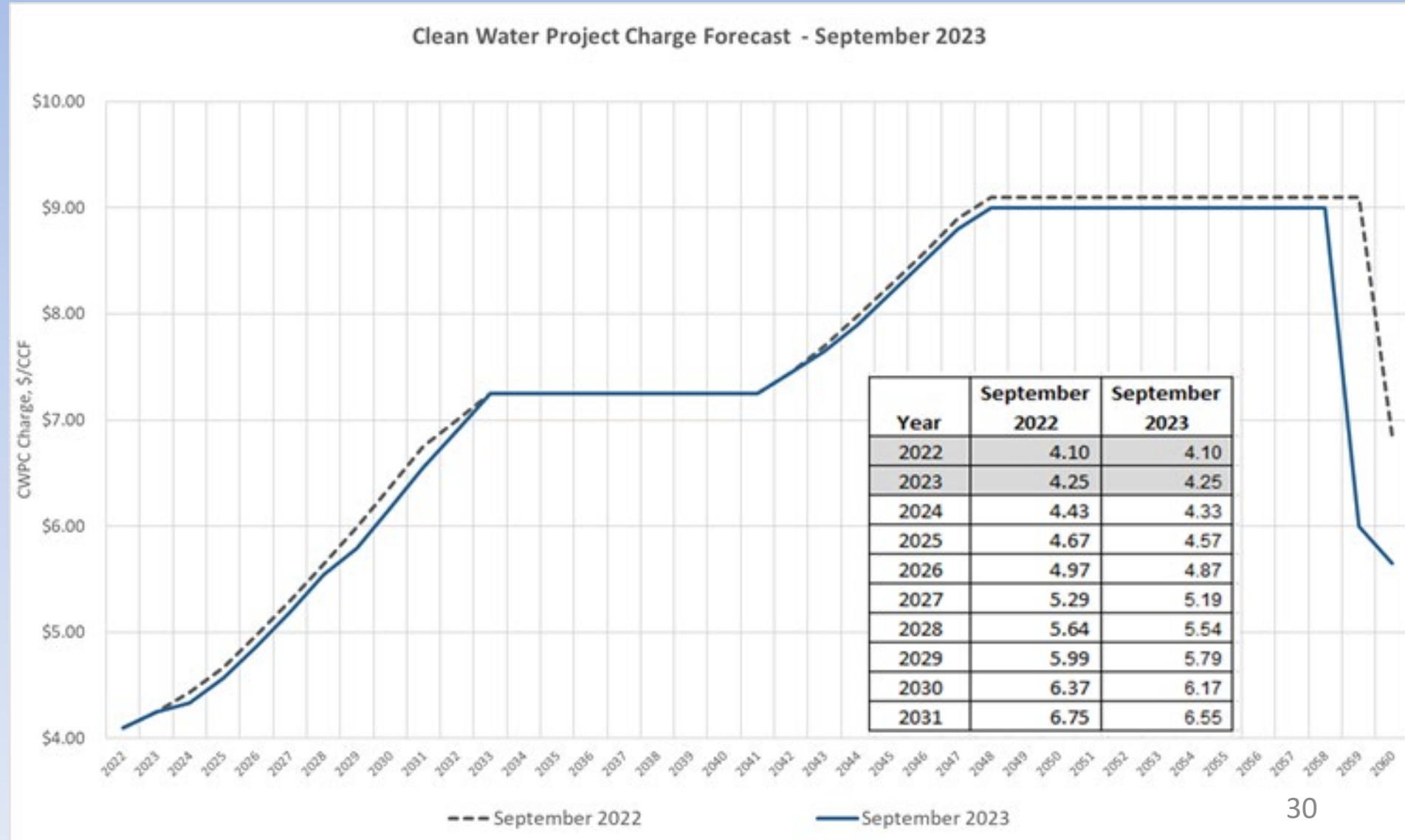
MDC's Outreach Efforts

- **Project Specific Outreach:**
 - Construction notices
 - Meetings, mailings, door to door notifications
 - Community Partnerships
 - On site within project areas
 - Participate in local NRZ & Community Group meetings
 - Flood compensation program referrals to Blue Hills Civic Association
- **Community Outreach Services RFQ/P 2023R-53**
 - Janice Flemming-Butler (Hartford based)
 - Moody Consulting Firm, LLC (Hartford based)
- **Website / Social Media / Videos**
 - Website dedicated for north Hartford Sewer Improvement Projects
 - Weekly construction project schedule updates
 - Educational videos
 - example: Granby / Blue Hills Drainage Study with City of Hartford <https://youtu.be/Ev00CoRdV78>
 - Regular Social Media posts
- **Regular press releases**
- **Advertisements in local Hartford newspapers**
 - Inquiring News, North End Agents, Hartford News



Clean Water Project Charge (CWPC)

Significant change in plan has **not** resulted in any additional CWPC charges than originally projected in September 2022 by receiving additional grant money from CT DEEP and deferring many projects in original Integrated Plan to the 2030s and beyond (next slide)



Deferred Projects from 2018 Integrated Plan

| Original Phase 1 CWP/IP Project | Original End Date | Revised End Date |
|---|-------------------|------------------|
| SM-2 Improvements | 2024 | 2030 - 2040 |
| Cemetery Brook Area Large Diameter Rehab | 2025 | 2030 - 2040 |
| Farmington and Homestead Ave Large Diameter Rehab | 2026 | 2030 - 2040 |
| New North Branch Interceptor Improvements | 2027 | 2030 - 2040 |
| Kane Brook (S-8 & S-13) | 2027 | 2030 - 2040 |
| Homestead Avenue Interceptor Improvements (Design Only) | 2029 | 2030 - 2040 |
| Gully Brook Area Large Diameter Rehab (Part 1) | 2029 | 2030 - 2040 |
| Gully Brook Area Large Diameter Rehab (Part 2) | 2029 | 2030 - 2040 |
| N-12 Sewer Separation and CMOM | 2029 | 2030 - 2040 |
| South Hartford Conveyance & Storage Tunnel (SHCST) Contract 4 | 2029 | 2030 - 2040 |
| Small Diameter Sewer Rehab Program | 2029 | 2030 - 2040 |
| Newington SSO Separation | 2026 | 2030 - 2040 |
| Wethersfield SSO Separation | 2026 | 2030 - 2040 |
| Franklin Avenue Area Sewer Relocations | 2026 | 2030 - 2040 |
| Wethersfield Trunk Sewer (Design Only) | 2028 | 2030 - 2040 |

- In addition, the Downtown Tunnel was deferred to beyond 2050 (if needed)

Closing Remarks

- Many ongoing initiatives and projects
- Many ways to **stay informed**
 - Visit - <https://themdc.org/north-hartford-sewer-improvement-projects/>
 - Via your local NRZ
- Quarterly Consent Order Meetings
 - Second Thursday of the months of March, June, September, and December
 - Each meeting will also be virtual
- Questions and Answers

List of Acronyms

- AFSCME = American Federation of State, County and Municipal Employees
- AHNA = Asylum Hill Neighborhood Association
- CSO = Combined Sewer Overflow
- CT DEEP = Connecticut Department of Energy and Environmental Protection
- CWF = Clean Water Fund
- CWPC = Clean Water Project Charge
- DAS = Department of Administrative Services
- DBE = Disadvantaged Business Enterprise
- EPA = Environmental Protection Agency
- GHAAA = Greater Hartford African American Alliance
- IP/CSO LTCP = Integrated Plan/CSO Long-Term Control Plan
- MBE = Minority-Owned Business Enterprise
- MCC = Minority Construction Council
- MG = Million Gallons
- NAWIC = National Association of Women in Construction
- NGOs = Non-Government Organizations
- NRZs = Neighborhood Revitalization Zones
- Q3 = Quarter 3 (period from July 1, 2023 to September 30, 2023)
- RFP = Request for Proposal
- RFQ = Request for Qualifications
- ROW = right-of-way
- SBE = Small Business Enterprise
- SHCST = South Hartford Conveyance & Storage Tunnel
- SSES = Sanitary Sewer Evaluation Survey
- SSO = Sanitary Sewer Overflow
- WBE = Women-Owned Business Enterprise