



Sewer House Connection (lateral) Lining & Rehabilitation

We Have Been Trying to Reach You!

Beginning the week of October 2nd, Metropolitan District (MDC) and their contractor, **Coastline Construction Company**, in association with **National Water Main**, will be performing sewer rehabilitation and lining activities in your neighborhood. During this time, **with your permission and at no cost to you**, the contractor can also line your sewer house connection. This is the pipe (lateral) that connects your house to the sewer main in the street. See graphic on reverse.

Sewer lining is performed to help stop excess water from getting into the pipe (through cracks and leaks), ***improves the structural integrity of the pipe, and reduces risks of blockages***. It is a “no dig” type of construction thereby minimizing impact to your property. Upon completion your renewed sewer house connection will last an estimated 50 years.

YES, I'd like to line my House Connection

- 1) We'll need your Signed Permission
- 2) You will receive several notices in advance of the work starting so you will be informed and prepared.
- 3) Your house connection (lateral) will be lined from the main in the street to your external foundation.
- 4) There is **NO COST** to you.

I DO NOT want my House Connection lined

We will only line the portion of your lateral in the public right of way (street side to your property line).

If you choose not to participate while the contractor is on your street, you may be responsible for all or some of the cost to rehabilitate your lateral in the future.

Please contact us by or before September 28th if you would like more information or to sign up to have your Sewer House Connection lined.

Angel Morales, MDC Outreach
(860) 278-7850 Ext. 3331
amorales@themdc.com



Visit www.themdc.com,
and click **TRAFFIC ALERT** to learn about road closures or detours in your area.



Like us on Facebook!
www.facebook.com/themetropolitandistrict



Follow MDC traffic
 (@mdctrfficinfo)



The Metropolitan District
 555 Main Street
 Hartford, CT 06103
 (860) 278-7850
www.themdc.com



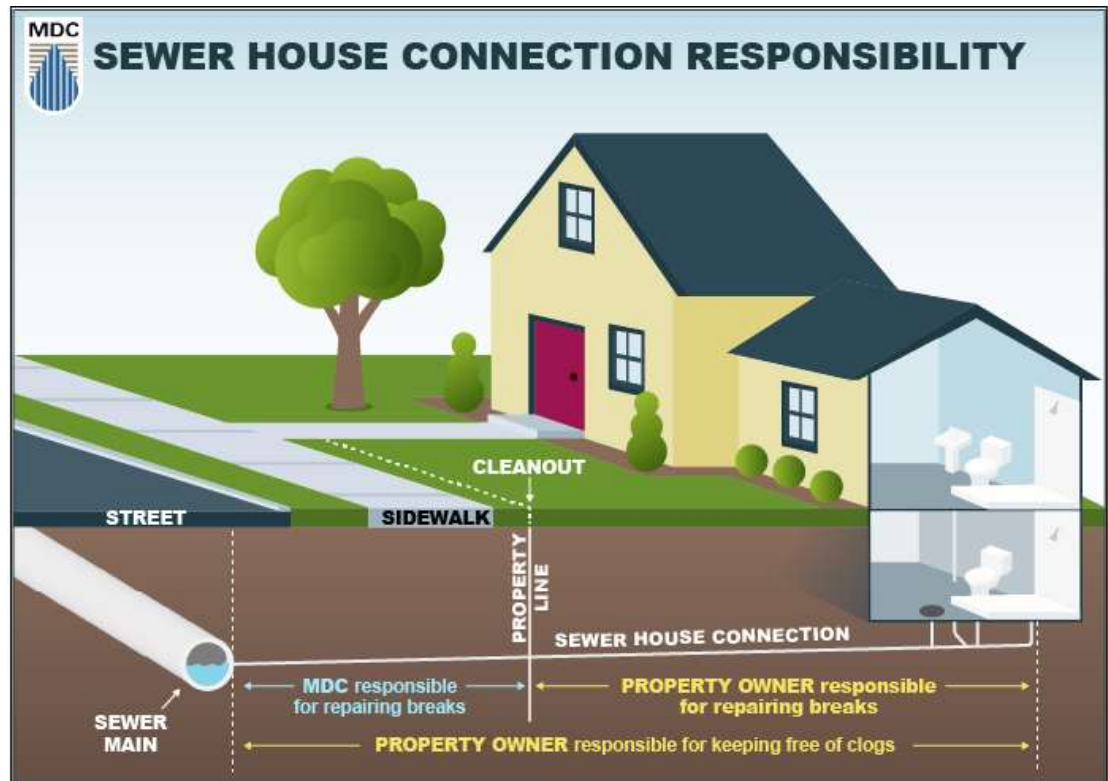
Visit www.themdc.com,
and click **TRAFFIC
ALERT** to learn about
road closures or detours
in your area.



Like us on Facebook!
[www.facebook.com/
themetropolitandistrict](http://www.facebook.com/themetropolitandistrict)



Follow MDC traffic
(@mdctrfficinfo)



For illustrative purposes only. Not to scale.

If you choose to participate have your Sewer House Connection lined, the MDC's contractor will line the full length of your lateral from the Sewer Main in the street to within a few feet from your external foundation at NO COST TO YOU.

If you choose NOT to have your Sewer House Connection fully lined, the MDC's contractor will line from the Sewer Main in the street to the property line only.



The Metropolitan District
555 Main Street
Hartford, CT 06103
(860) 278-7850
www.themdc.com