



Visit [www.themdc.com](http://www.themdc.com),  
and click **TRAFFIC  
ALERT** to learn about  
road closures or detours  
in your area.



Like us on Facebook!  
[www.facebook.com/  
themetropolitandistrict](http://www.facebook.com/themetropolitandistrict)



Follow MDC traffic  
(@mdctrfficinfo)



The Metropolitan District  
555 Main Street  
Hartford, CT 06103  
(860) 278-7850  
[www.themdc.com](http://www.themdc.com)

**FREE!**

## Sewer House Connection Lining

**DON'T MISS OUT! FINAL  
ATTEMPT TO REACH YOU!**

The **Metropolitan District (MDC)** and its contractors, **Coastline Construction Company and National Water Main**, will be performing sewer rehabilitation and lining activities in your neighborhood. **During this time, with your signed permission**, the contractor can line your sewer house connection **at no cost to you**. This is the pipe (lateral) that connects your house to the sewer main in the street.

*See graphic on reverse.*

**Please contact us to schedule an appointment -  
we have been unsuccessful in reaching you!**

Sewer lining is performed to help *stop excess water from getting into the pipe* (through cracks and leaks), *improve the structural integrity of the pipe*, and *reduce the risk of blockages*. It is typically a “no dig” method requiring no disturbance to your lawn. Upon completion your renewed sewer house connection could last an estimated 50 years.

**YES, I'd like to line my House Connection**

- 1) We'll need your Signed Permission
- 2) You will receive several notices in advance of the work starting so you will be informed and prepared.
- 3) Your house connection (lateral) will be lined from the main in the street to your external foundation.
- 4) There is **NO COST** to you.

**I DO NOT want my House Connection lined**

We will only line the portion of your lateral in the public right of way (street side to your property line).

Any future work to your lateral may be completed under the House Connection Program, and would likely be a more disruptive and costly method of repair, including excavation on your property.

**Please contact us by or before October 6<sup>th</sup>**, if you would like more information or to sign up to have your Sewer House Connection lined.

**Mandisa Walker, Outreach Liaison**  
**(860) 797-0370** [mandisa@moodyconsultingfirm.com](mailto:mandisa@moodyconsultingfirm.com)



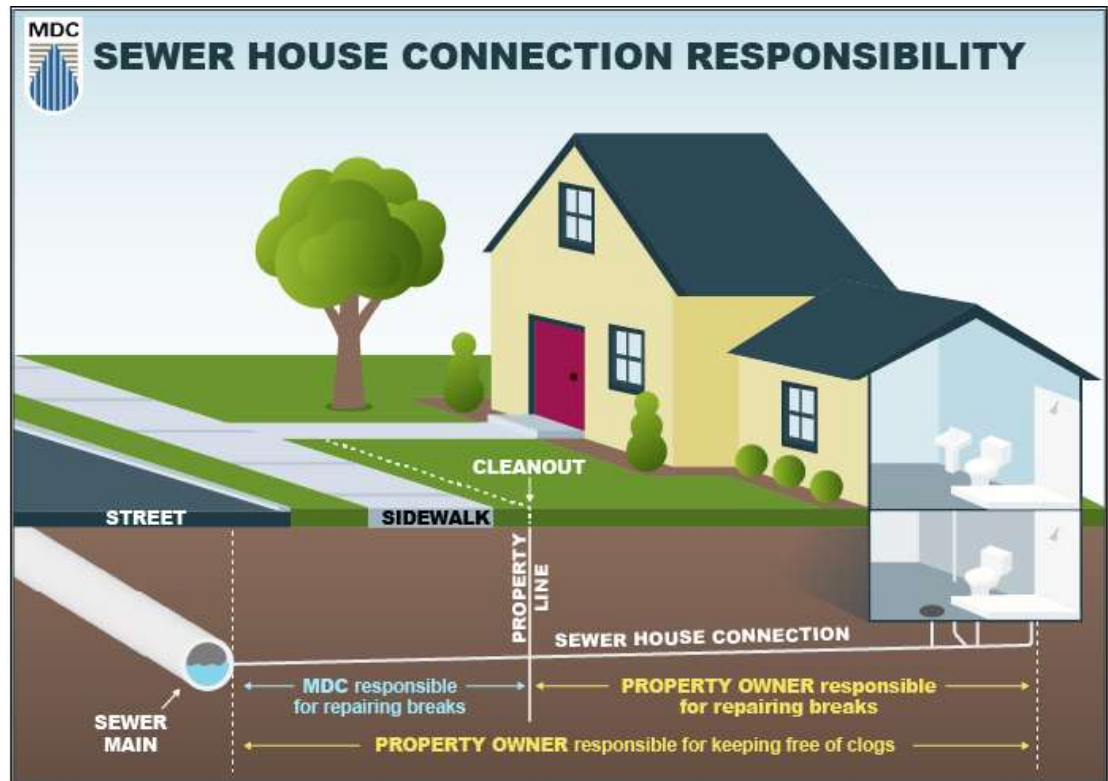
Visit [www.themdc.com](http://www.themdc.com),  
and click **TRAFFIC  
ALERT** to learn about  
road closures or detours  
in your area.



Like us on Facebook!  
[www.facebook.com/  
themetropolitandistrict](http://www.facebook.com/themetropolitandistrict)



Follow MDC traffic  
(@mdctrfficinfo)



For illustrative purposes only. Not to scale.

Sewer lining is typically a “**NO DIG**” method of construction that does not require the contractor to disturb surface areas of your property.

**Notices will be provided to all properties prior to lining work starting.**

**If you choose to participate** to have your Sewer House Connection lined, the MDC’s contractor will line the full length of your lateral from the Sewer Main in the street to within a few feet from your external foundation at **NO COST TO YOU.**

**\*If we don’t hear from you, or if you have chosen NOT** to have your Sewer House Connection fully lined, the MDC’s contractor will line from the Sewer Main in the street to the property line only.

(\*Any future work to your lateral may be completed under the **House Connection Program**, and would likely be a more disruptive and costly method of repair, including excavation on your property. Through this Program, the District only covers cost up to \$10,000 per property. Customers would be responsible for paying the difference in cost.)



The Metropolitan District  
555 Main Street  
Hartford, CT 06103  
(860) 278-7850  
[www.themdc.com](http://www.themdc.com)