



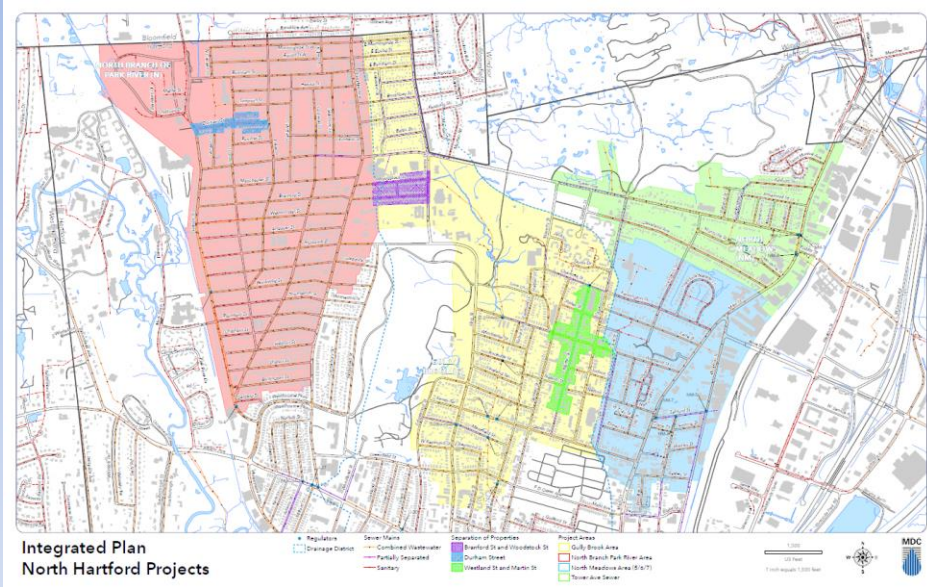
North Hartford - Clean Water Project Update
July 25, 2023

Clean Water Project – Sharing What's New

- MDC has been working closely with CT DEEP to re-prioritize Integrated Plan (IP) projects in response to public concerns regarding sewer back ups and flooding in North Hartford
- MDC is setting a new standard with EPA and CT DEEP to revise the approach to Clean Water Act compliance by focusing on existing public and private property infrastructure as a means for CSO reduction. This approach achieves Compliance by first removing stormwater from the sewer system at the source rather building additional capacity to collect the overflows.
- This approach results in adding or advancing the schedule of more than \$150M worth of work in North Hartford



North Hartford Projects - Overview



Integrated Plan
North Hartford Projects

North Hartford Projects Added to IP Phase 1 (2023-2029)

- Backwater Valve and Private Property Disconnect 2023-2026 (North Hartford -1,000 – 1,500 properties)
- Sewer & Lateral Rehabilitation in North Hartford: 2023 – 2026 (Red/Yellow/Cyan)
- North Meadows Sewer & Lateral Rehabilitation: 2023 (Green)
- Expedited Sewer Separation Contracts: Specific Streets 2023-2025 (small Hatching)
- Granby Area Sewer Separation (Within Reddish Area) 2026-2028
- Granby Area Private Separation: (Within Reddish Area) 2028-2030

North Hartford Projects On-going in IP Phase 1 (2023-2029)

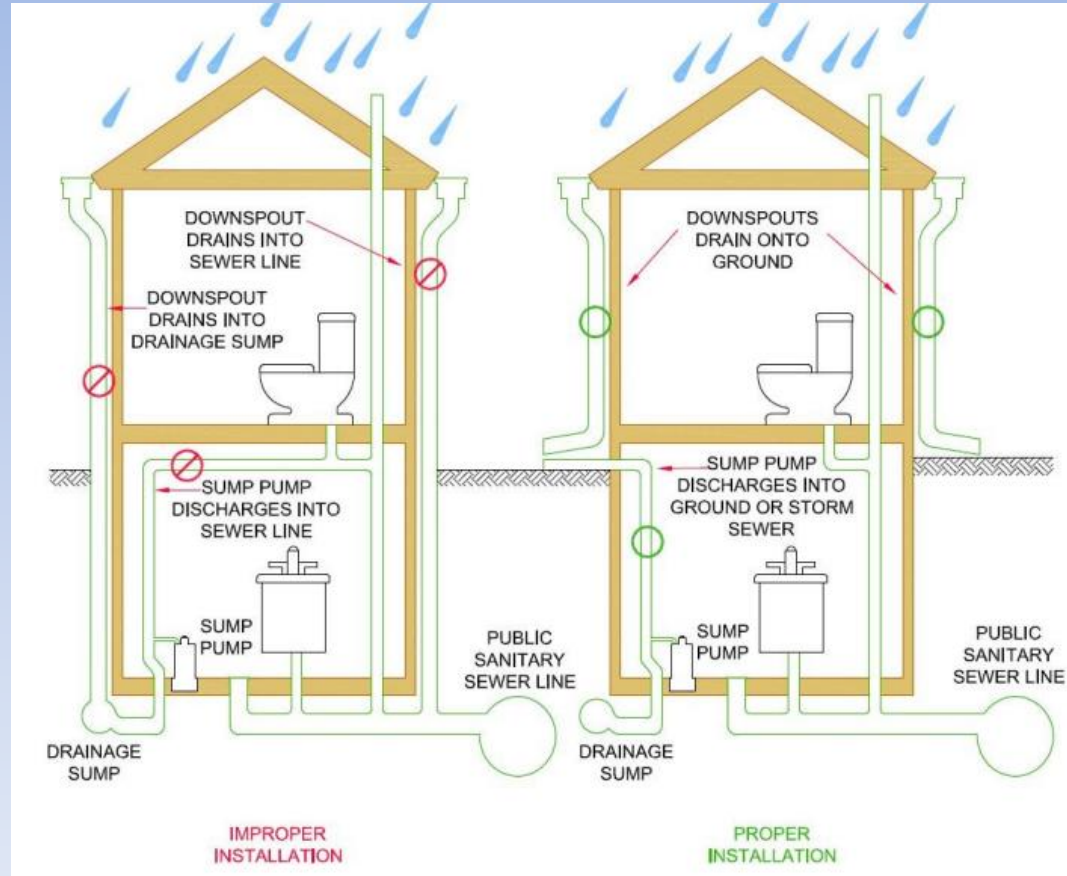
- North Branch PR Drainage Study/Separation Design (COH/MDC Project): 2023 – 2024
- District wide Backwater valve and Private Property Disconnect

*This graphic is provided as a handout and on display

North Hartford Private Property Work

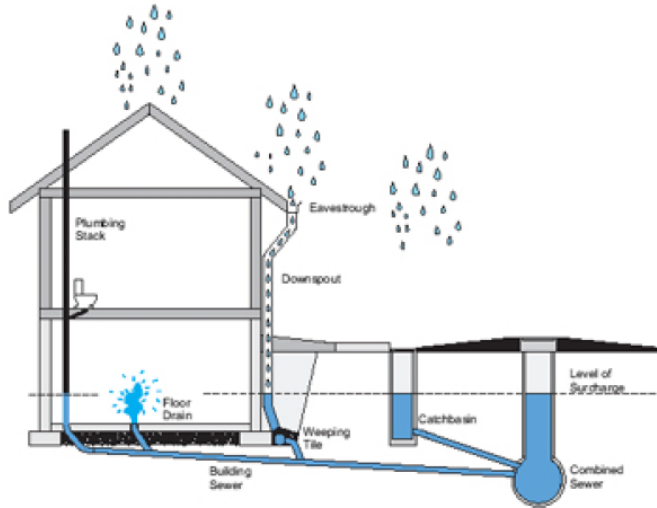
North Hartford Backwater Valve Program and Private Property Inflow Disconnections - \$12.2M

- 1,000 to 1,500 Properties in North Hartford
- Protect Basements - plumbing deficiencies and unprotected fixtures
- Laterals (Sewer house connection) – assess and correct problems
- Private Property Separation - changes in anticipation of future combined sewer separation
- *Assessments at Private Properties: How to get your appointment with MDC's Utility Services*



Combined Sewer Systems

(Hartford)

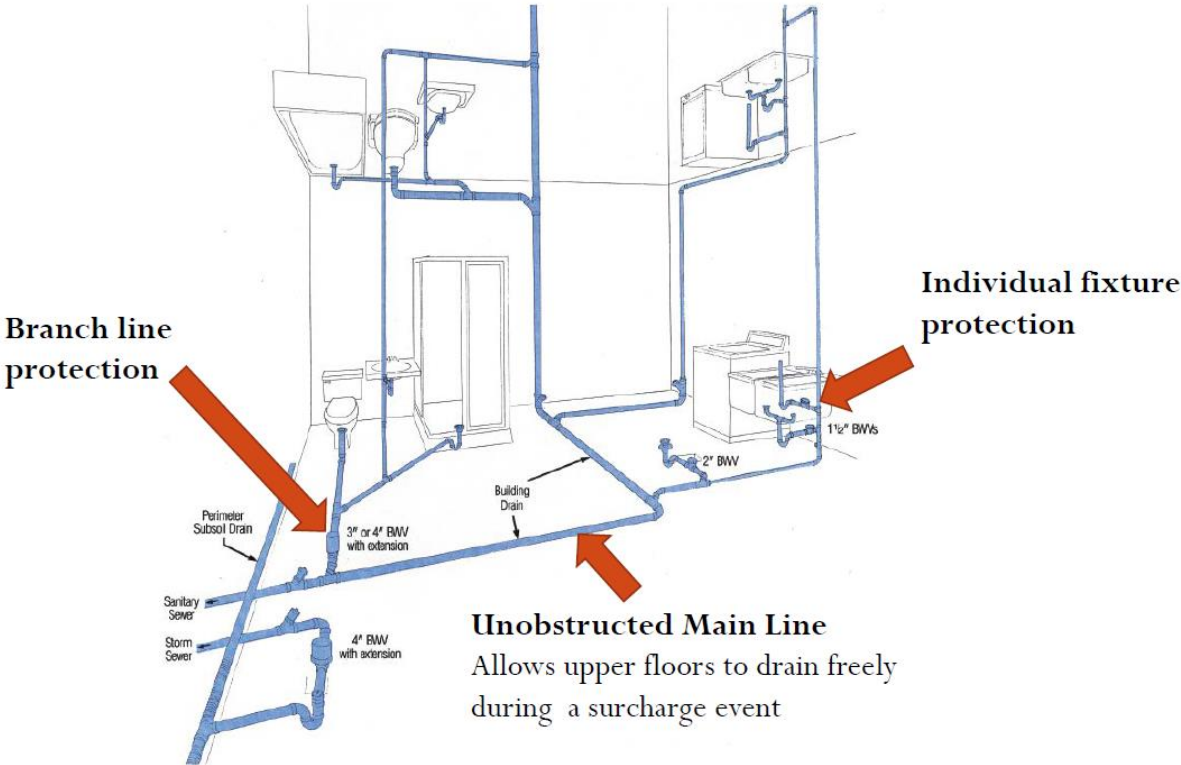


Combined Sewer Systems are piping systems that share one pipe for both storm and sanitary sewer flows. Combined sewer systems are common in older cities constructed prior to the Clean Water Act of 1972. Combined systems are typically supplemented with regulated overflows to relieve the sewer during heavy rain events. MDC has been actively working over the past two decades to reduce the occurrences and volume of overflows through its Clean Water Project.

Why don't Sewer Backups occur during every storm?

Combined systems are typically designed to handle small to moderate storm events and are also supplemented by the regulated overflows to prevent the sewers from exceeding their capacity. In areas of combined system community that do have separate storm and sewer pipes, backups can still occur as flow from other non-separated areas flow through the separated area causing the capacity of the pipe to be exceeded.

Code Compliant Plumbing



Photos of Interior Work

You may have this.



Before and After Installation of Sump Pump



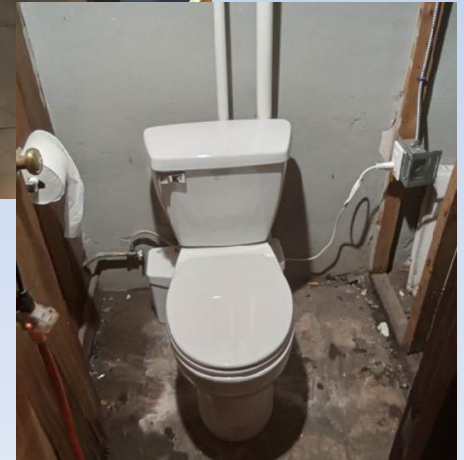
New
Backwater
Valve



More Photos of Interior Work

Basement Bathroom - Protected

Basement Sink - Protected



Point Repair

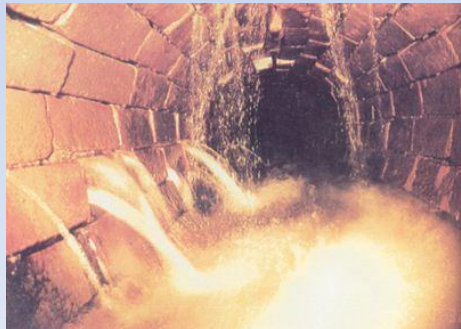


Photos of Sewer Rehabilitation and Repair

Sewer Lateral Replacement



Before Lining



After Lining



Sewer Main Lining



Things to Know



- Private Property work (Backwater valve, lateral rehab, etc.) performed at no cost to the property owner
- Typical Process for Backwater valve and plumbing work:
 - *Assessment, Determination of action, Homeowner acceptance,, City permit, Construction and Inspection*
- Pavement/Sidewalk/Lawn Restoration – Temporary, with Permanent to follow
- Construction can be inconvenient and cause noise, smell and traffic disruption
- Project work may impact on-street parking, sidewalks, driveways, trees, lawns
- Outreach staff– available to answer questions and help resolve issues


Minority Contractor and Workforce Engagement

- Procurement Outreach to Local Small, Minority, Contractors
 - Partnering with State DAS and Minority Construction Council (MCC) to find available local small, minority, and woman owned contractors
 - Reached out to over 30 local small, minority businesses through DAS and City of Hartford approved contractor lists
 - Back Water Valve and House Connection RFQs are Set-Aside 100% for Small, Minority, and Women-Owned Contractors
 - Larger street projects have subcontractor set-asides for Minority and Women-Owned businesses
- Hartford Residency Workforce Development and Contract Goal of 30%
 - Matching prime and subcontractors with local workforce through Connecticut Pre-Apprenticeship Program (Jeff Cathcart and Shari Pratt)
 - Work-based Learning Program through CT Technical Education and Career System (Al Prince Tech, EC Goodwin, Howell Cheney Tech)
 - Greater Hartford African American Alliance and MCC collaboration



Ways We Communicate

- How to Stay informed:
 - Flyers: via mail or hand delivered
 - Meetings: Project/Neighborhood focused
 - Website:
 - <https://themdc.org/projectoutreach/>
 - Traffic Alert site
 - Outreach Team
- MDC staff and Contractors may visit you at your property.
 - No Badge No Entry- Ask for ID



CONSTRUCTION NOTICE

Sanitary Sewer Rehabilitation and Sanitary Sewer Lining

This work will be performed within one week after you receive this notice.

The Metropolitan District (MDC) has contracted with **Michels** for sewer rehabilitation work in your area. The work will be completed using a special "MDC" method, which is used to repair old or defective sewers without the need to dig-up the street. Workers will use a flexible lining material and place it in the sewer pipe. With heat, it will become a rigid reinforcement for the existing pipe and will last for more than 50 years. This process allows for repairs to be made with minimal homeowner disruption and a decreased inconvenience to our valued customers.

Again, the purpose of this notice is to inform you that the sewer work in your area will take place in approximately 7 days. You will be notified once again, 24-hours prior to the start of repair work. Additionally, you will be notified within 24-hours of completion of the repair work.

During the installation period (usually 6-7 hours), **YOUR SEWERS WILL BE TEMPORARILY BLOCKED OFF. PLEASE LIMIT YOUR USE OF WATER.** Normal use of the toilet or washing hands is acceptable. However heavy usage such as laundry, long showers and running water for extended periods of time, should be avoided. **THIS IS TO PREVENT SEWAGE BACKING UP INTO YOUR HOME OR BASEMENT.**

IMPORTANT: If you have a sump pump connected to your sewer drain, please disconnect the hose or piping from the pump to the sewer drain and redirect it to your lawn, driveway, or other drainage area while the sewer work is in progress.

Please note:


1. Sewer cleaning work will be performed prior to the installation of the pipe liner and after its completion. This will involve the flushing of the sanitary sewers with high pressure water. This operation in rare occurrences can cause back pressure resulting in either air or water to surge into toilets and other plumbing devices. If this happens please contact Randy Breakeil, MDC Construction Inspector at (860) 278-7850.
2. It is recommended that you fill the trap on all drains (floor, sink, etc.) with water to reduce the likelihood of odors caused by the pipe lining curing process. In the unlikely event that you experience this problem, please open windows and the door/closets. Also, it is recommended that all toilet seats be kept down, in the event that a pressure build up causes a spray.

For further information or questions please contact:

Randy Breakeil, MDC Construction Inspector
Jeff Passardi, MDC Construction Manager

In the event of a problem after hours please call MDC's 24-hour # (860) 278-7850, ext. 3600

If you would like to obtain more information on this project or on our efforts, please visit our website at www.themdc.com. Again, we than effort to provide you with quality sanitary sewer services.



Visit www.themdc.com, and click **TRAFFIC ALERT** to learn about road closures or detours in your area.

Discussion and Questions?

Thank you for joining us today.