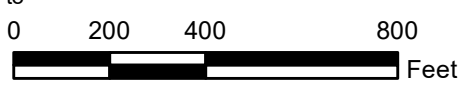


Existing System:

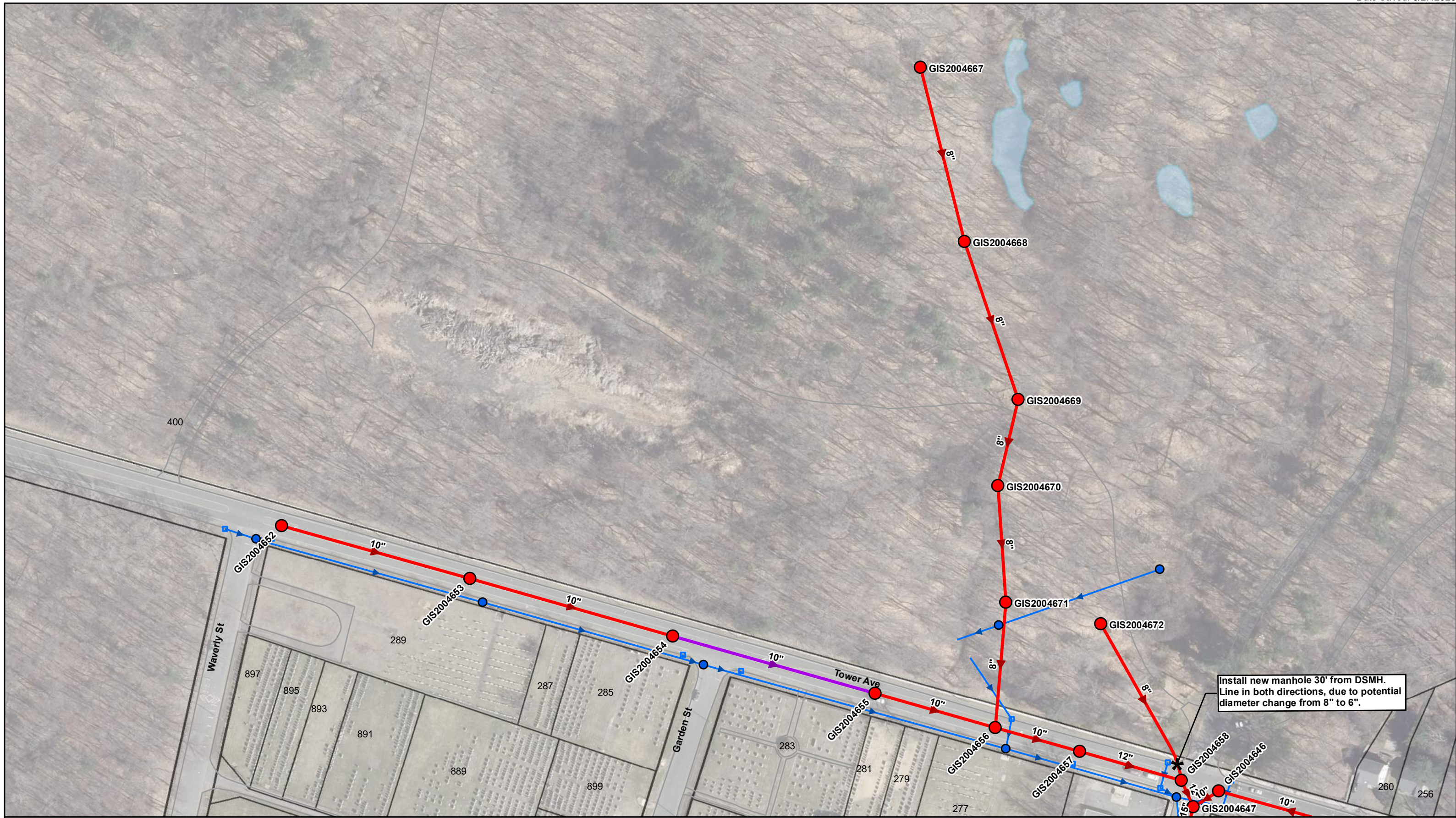


- Active Regulator
- Combined Sewer Manhole
- Sanitary Manhole
- Sanitary Sewer
- Combined Sewer

Proposed Rehab:



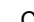





- Structure Rehabilitation at Regulator
- Manhole Rehabilitation
- Manhole Rehabilitation and Remove/Replace Frame and Cover
- Mainline Previously Lined, Perform Lateral Lining to Building
- Point Repair and Lateral Lining to Building
- Mainline Lining and Lateral Lining to Building
- Point Repair, Mainline Lining, and Lateral Lining to Building









The Metropolitan District
Hartford, CT
**CFQ-9: Tower Avenue
Area (North Meadows
Drainage District)**
June 2023

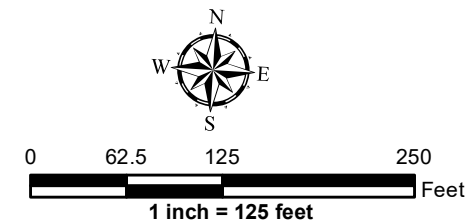




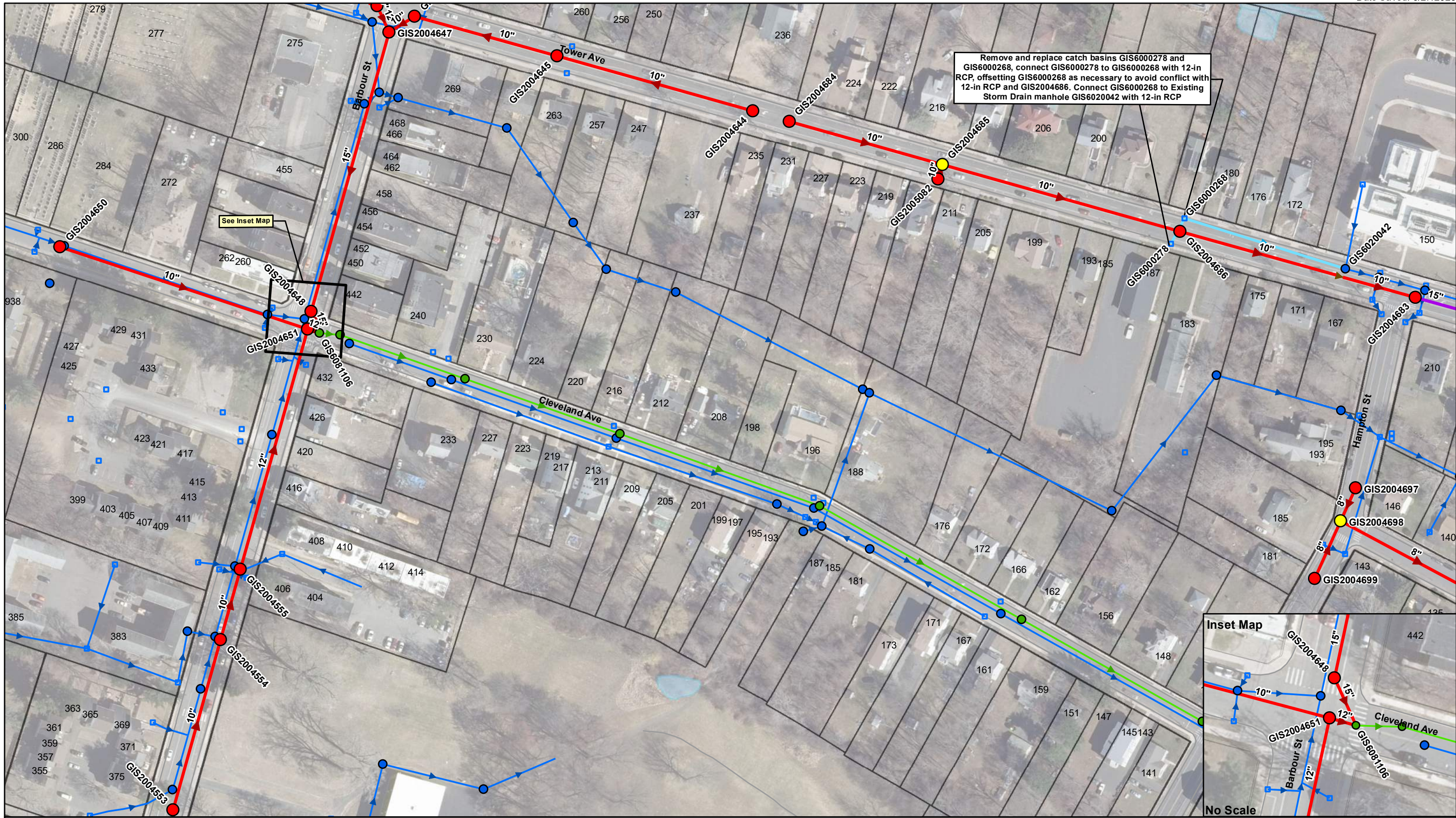
Existing System:

| | |
|--|--|
|  Active Regulator |  Catch Basin |
|  Combined Sewer Manhole |  Sanitary Sewer |
|  Sanitary Manhole |  Combined Sewer |
|  Storm Drain Manhole |  Storm Drain |

Proposed Rehab:

| | |
|---|---|
|  Structure Rehabilitation at Regulator |  Mainline Previously Lined, Perform Lateral Lining to Building |
|  Manhole Rehabilitation |  Mainline Lining and Lateral Lining to Building |
|  Manhole Rehabilitation and Remove/Replace Frame and Cover |  Point Repair, Mainline Lining, and Lateral Lining to Building |





Remove and replace catch basins GIS6000278 and GIS6000268, connect GIS6000278 to GIS6000268 with 12-in RCP, offsetting GIS6000268 as necessary to avoid conflict with 12-in RCP and GIS2004686. Connect GIS6000268 to Existing Storm Drain manhole GIS6020042 with 12-in RCP

See Inset Map



Existing System:

- Active Regulator
- Combined Sewer Manhole
- Sanitary Manhole
- Storm Drain Manhole

Proposed Rehab:

- Catch Basin
- Sanitary Sewer
- Combined Sewer
- Storm Drain

- Structure Rehabilitation at Regulator
- Manhole Rehabilitation
- Manhole Rehabilitation and Remove/Replace Frame and Cover

- Mainline Lining and Lateral Lining to Building
- Point Repair, Mainline Lining, and Lateral Lining to Building

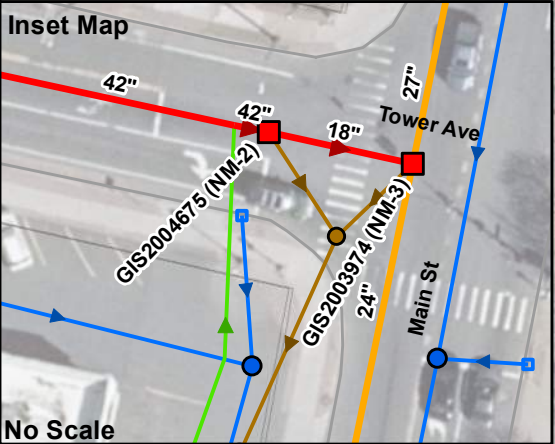
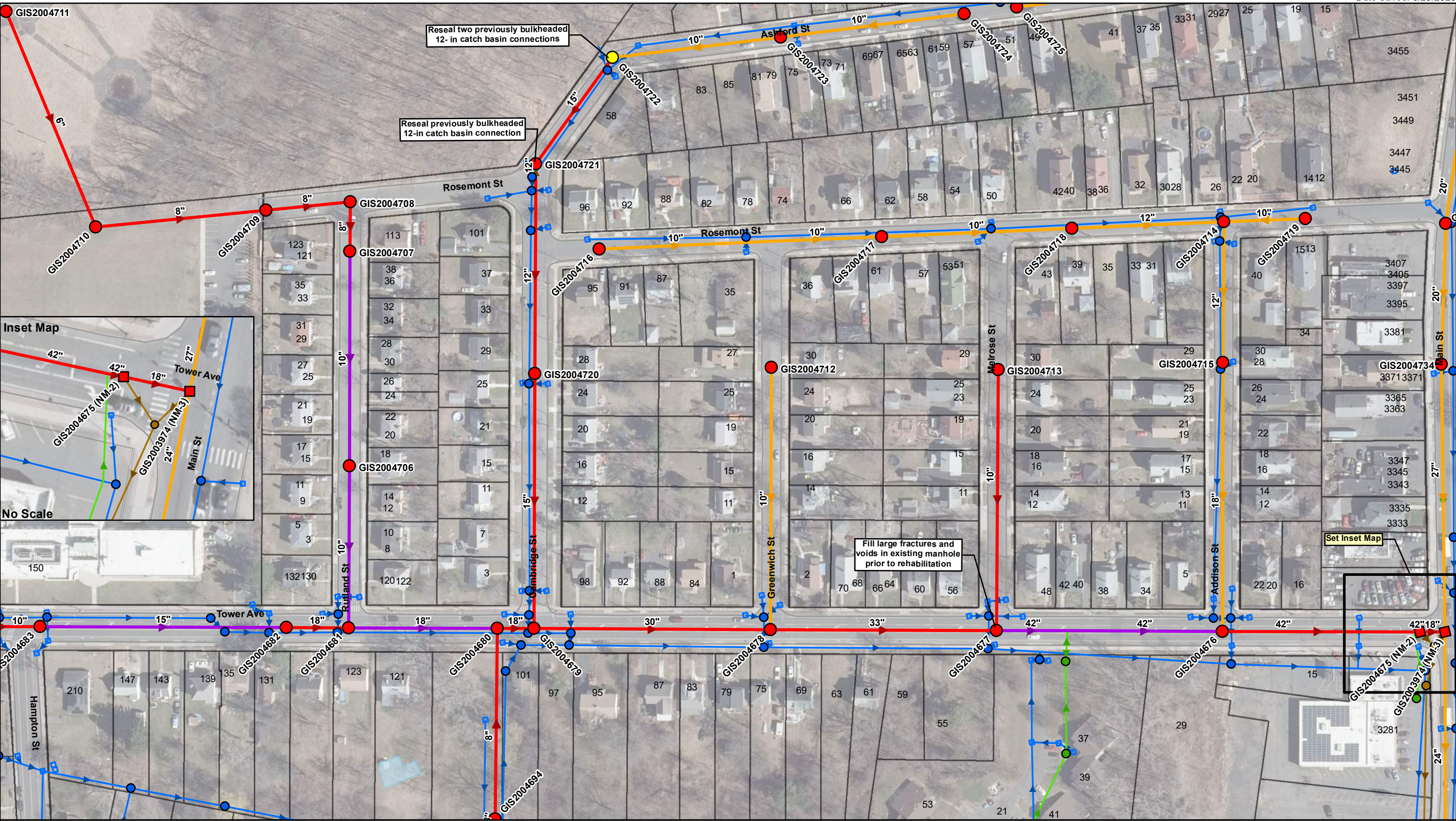
- Mainline Previously Lined, Perform Lateral Lining to Building
- New Storm Drain

1 inch = 125 feet

The Metropolitan District
Hartford, CT

**CFQ-9: Tower Avenue Area
(North Meadows Drainage District)**

June 2023
Page 2 of 5



No Scale

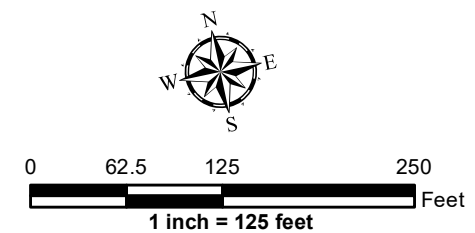
Set Inset Map

Existing System:

| | |
|------------------------|----------------|
| Active Regulator | Catch Basin |
| Combined Sewer Manhole | Sanitary Sewer |
| Sanitary Manhole | Combined Sewer |
| Storm Drain Manhole | Storm Drain |

Proposed Rehab:

| | |
|---|---|
| Structure Rehabilitation at Regulator | Mainline Previously Lined, Perform Lateral Lining to Building |
| Manhole Rehabilitation | Mainline Lining and Lateral Lining to Building |
| Manhole Rehabilitation and Remove/Replace Frame and Cover | Point Repair, Mainline Lining, and Lateral Lining to Building |





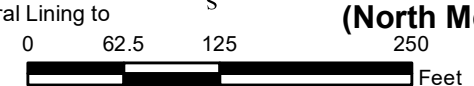
Existing System:

- Active Regulator
- Combined Sewer Manhole
- Sanitary Manhole
- Storm Drain Manhole
- Sanitary Sewer
- Combined Sewer
- Storm Drain
- Catch Basin

Proposed Rehab:

- Structure Rehabilitation at Regulator
- Manhole Rehabilitation
- Manhole Rehabilitation and Remove/Replace Frame and Cover
- Mainline Lining and Lateral Lining to Building
- Point Repair, Mainline Lining, and Lateral Lining to Building

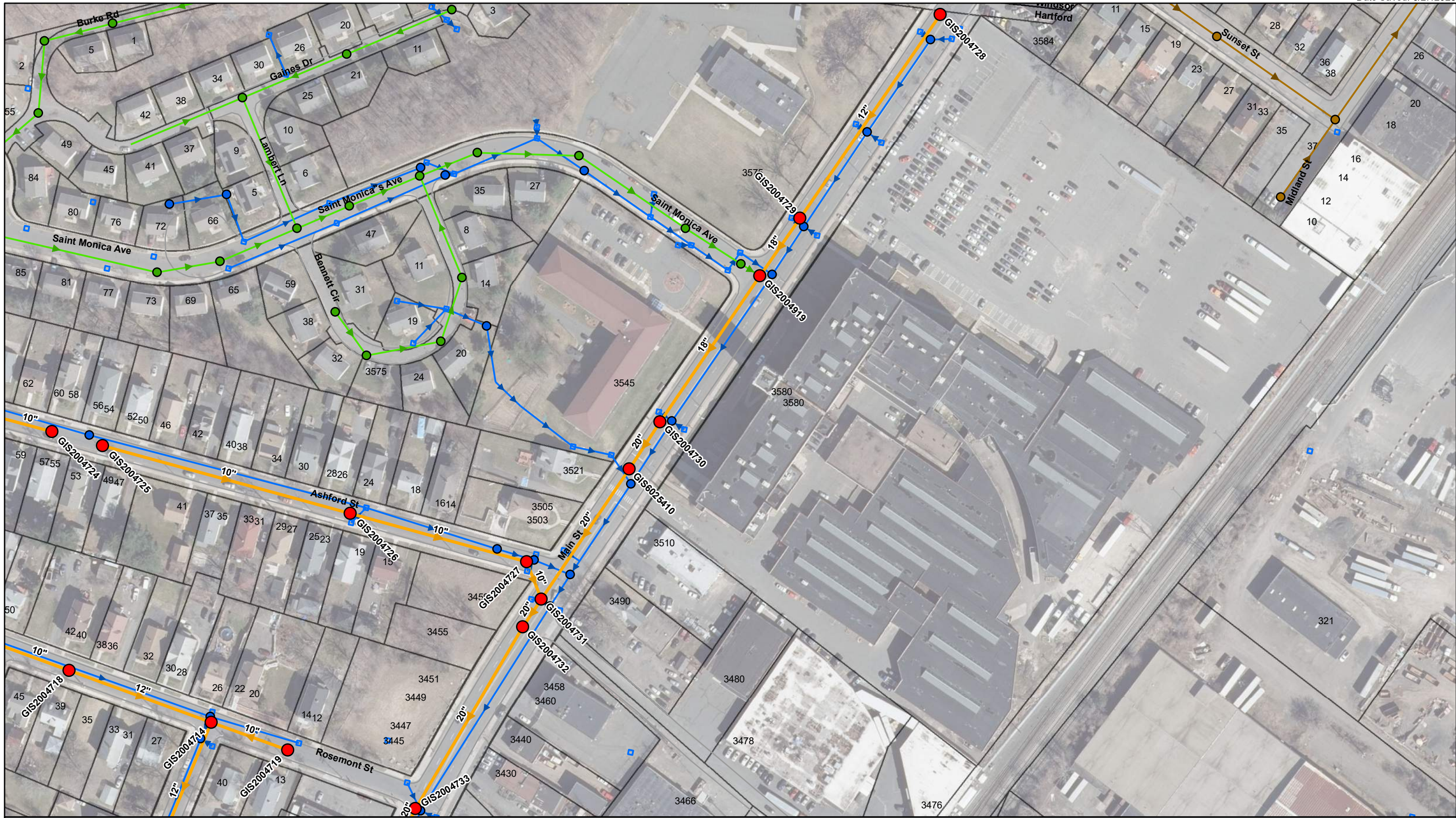
- Mainline Previously Lined, Perform Lateral Lining to Building
- Point Repair and Lateral Lining to Building



The Metropolitan District
Hartford, CT

**CFQ-9: Tower Avenue Area
(North Meadows Drainage District)**

Manhole does not exist.
Line 10" from Montville St
using man entry from Main St
sewer as necessary.



Existing System:

- Active Regulator
- Combined Sewer Manhole
- Sanitary Manhole
- Storm Drain Manhole
- ▶ Sanitary Sewer
- ▶ Combined Sewer
- ▶ Storm Drain

Proposed Rehab:

- Structure Rehabilitation at Regulator
- Manhole Rehabilitation
- Manhole Rehabilitation and Remove/Replace Frame and Cover
- ▶ Mainline Previously Lined, Perform Lateral Lining to Building
- ▶ Mainline Lining and Lateral Lining to Building
- ▶ Point Repair, Mainline Lining, and Lateral Lining to Building

