



The Metropolitan District
water supply · environmental services · geographic information

**WATER BUREAU
SPECIAL MEETING
WEDNESDAY, MARCH 9, 2022
5:30 PM**

Location

Board Room
District Headquarters
555 Main Street, Hartford

Dial in #: (415)-655-0001;
Access Code: 43808661#

[Meeting Video Link](#)

Commissioners

Adil	Lewis
Buell	Mandyck
DiBella (Ex-Officio)	Pane
Gardow	Petosky
Holloway	Salemi
Ionno	Sweezy
Lebeau	Taylor

Quorum: 7

1. CALL TO ORDER
2. ELECTION OF CHAIRPERSON
3. ELECTION OF VICE-CHAIRPERSON
4. PUBLIC COMMENTS RELATIVE TO AGENDA ITEMS
5. APPROVAL OF MEETING MINUTES OF NOVEMBER 22, 2021
6. CONSIDERATION AND POTENTIAL ACTION RE: RECREATION RATES AND PASSIVE RECREATION
7. DISCUSSION RE: POTENTIAL SALE OF SURPLUS CLASS III WATERSHED LAND
8. DISCUSSION RE: COLEBROOK RIVER LAKE DAM
9. REPORT RE: ADVANCED METER INFRASTRUCTURE UPDATE
10. DISCUSSION RE: ELECTRIC VEHICLE CHARGERS
11. OPPORTUNITY FOR GENERAL PUBLIC COMMENTS
12. COMMISSIONER COMMENTS & QUESTIONS
13. ADJOURNMENT

Water Bureau

MDC RECREATION AREAS

March 9, 2022 UPDATE

Lake McDonough Area

Towns:

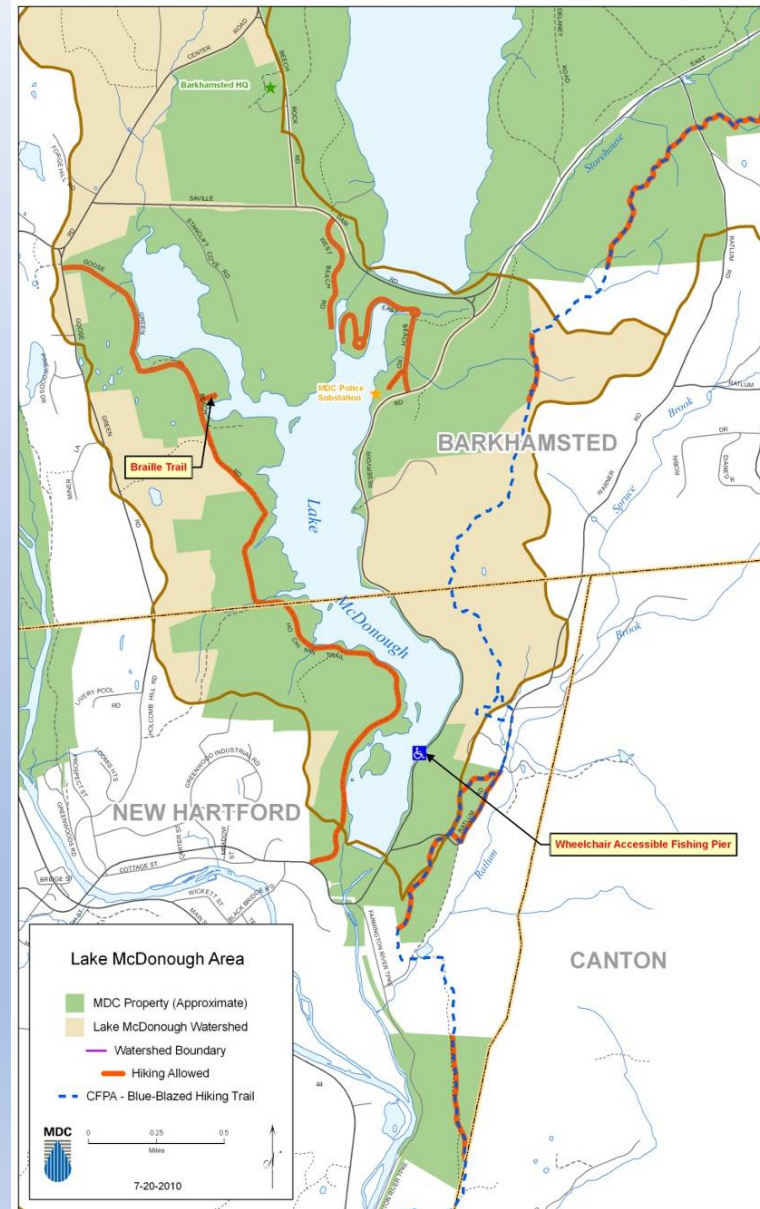
- Barkhamsted, CT (Taxes: \$56,651.60)
- New Hartford, CT (Taxes: \$54,822.50)

Acreage: 1,626 acres

Miles of Trails: ~6 miles

Recreation Uses:

- Swimming at Stancliff Cove
- Boating (CT DEEP Fishing Tournaments)
- Fishing (District Fish Stocking)
- Picnicking
- Ice Fishing (Prohibited)



2022 RECREATION UPDATE- Lake McDonough

Lake McDonough Boathouse and Boat Launch

- Maintain 2021 Operating Dates/Times
 - Weekend Only from Opening Day (April 8) to May 1
 - 7 Days per week starting on May 2
- Restricted to Private Boats Only, No MDC Boat Rentals, No Fishing Tournaments

Goal: “Passive Recreation”

- Recreation access by card reader for boat access
- Yearly Permit Access Only, Eliminate Day Pass.
- Installation of card access gate to only allow passholders – proposed for 2022
- Similar system used by Regional Water Authority in New Haven
- Access to walking trails and Picnic Areas from Saville Dam Parking Areas

Communications: Member Towns, Local Watershed Towns and State Officials

- The District communicates rates and registration process on the District website
- Cards will be issued upon receiving application and payment
- Continue to respond to concerns regarding rate adjustments
 - Senator Witkos

Glastonbury – Boat Launch

	Seasonal Permits	Daily Launch
Residents	\$60/year	\$20/day
Non-Residents	\$120/year	\$40/day

Rocky Hill Boat Launch

FEES:

Rocky Hill resident season pass(purchase in office)\$60.00
Non-resident season pass(purchase in office)\$100.00
Without season pass,daily fee payable to attendant\$30.00
(Fees will be collected any time attendant is present.)

Lake McDonough – 2021 Boating Summary

Boating Pass Sales Spring/Summer 2021

Type of Pass	Cash/Check	Credit Card	Gross Sales Amount	Credit Card Fees	Net Sales
Season Pass-Non-Resident (\$120 each)	14	63	\$ 9,240.00	(\$202.86)	\$9,037.14
Season Pass- Resident (\$60 each)	18	62	\$ 4,800.00	(\$102.92)	\$4,697.08
Day Pass-Non-Resident (\$40 each)	3	85	\$ 3,520.00	(\$96.90)	\$3,423.10
Day Pass- Resident (\$20 each)	1	69	\$ 1,400.00	(\$42.78)	\$1,357.22
Equipment Costs*					(\$2,125.79)
Cellular Plans (\$80/Month)**					(\$560.00)
Total YTD	36	279	\$ 18,960.00	(\$445.46)	\$15,828.75

*Includes Cost of 2 iPads, 2 iPad Cases, Cellular Signal Booster, 2 Square Contactless Readers, and 2 Square Magstripe Readers

**Includes Cost of Cellular Plan YTD (April, May, June, July, August, September and October)

Labor Costs for Temporary Staff to Operate Boat Launch

	# of Weeks	Labor Costs
Early Season	3	\$2,880
Summer Season	15	\$50,400
		\$53,280

Other Costs

- MDC also has a dedicated Conservation Ranger who manages Temporary staff for the 18 weeks as well as coordinates internal activities for the season.
- MDC Communications and Finance provides support.
- MDC Water Supply Maintenance Staff provide all prep/closure and ongoing maintenance during the boating season

2022 RECREATION UPDATE- Lake McDonough

STANCLIFF COVE

(Per EASEMENT Agreement – June 1966)

(Barkhamsted/New Hartford Town Beach)

- Review Town Beach opening for swimming
- Towns manage the launching of carry-in vessels from Stancliff Cove

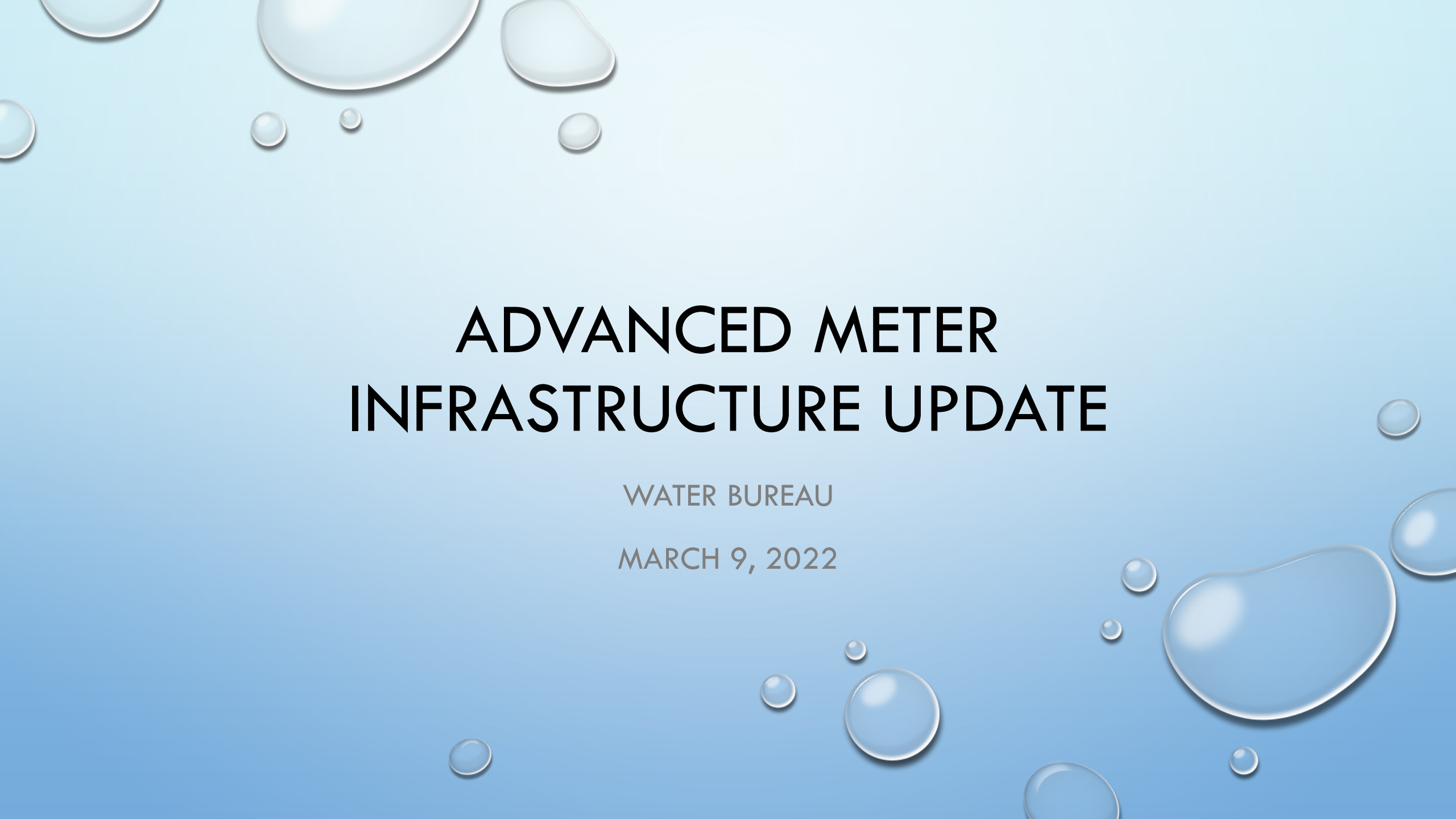
Stancliff Cove (Annual Pass)

RESIDENTS.....\$60.00

NON-RESIDENT.....\$325.00

RESIDENT SENIOR*...\$45.00

NON-RESIDENT SENIOR*..\$250.00

The background is a light blue gradient with several realistic water droplets of various sizes scattered across it. Some droplets are at the top, some at the bottom, and some on the right side. They have highlights and shadows, giving them a 3D appearance.

ADVANCED METER INFRASTRUCTURE UPDATE

WATER BUREAU

MARCH 9, 2022

OVERVIEW & PILOT SUMMARY

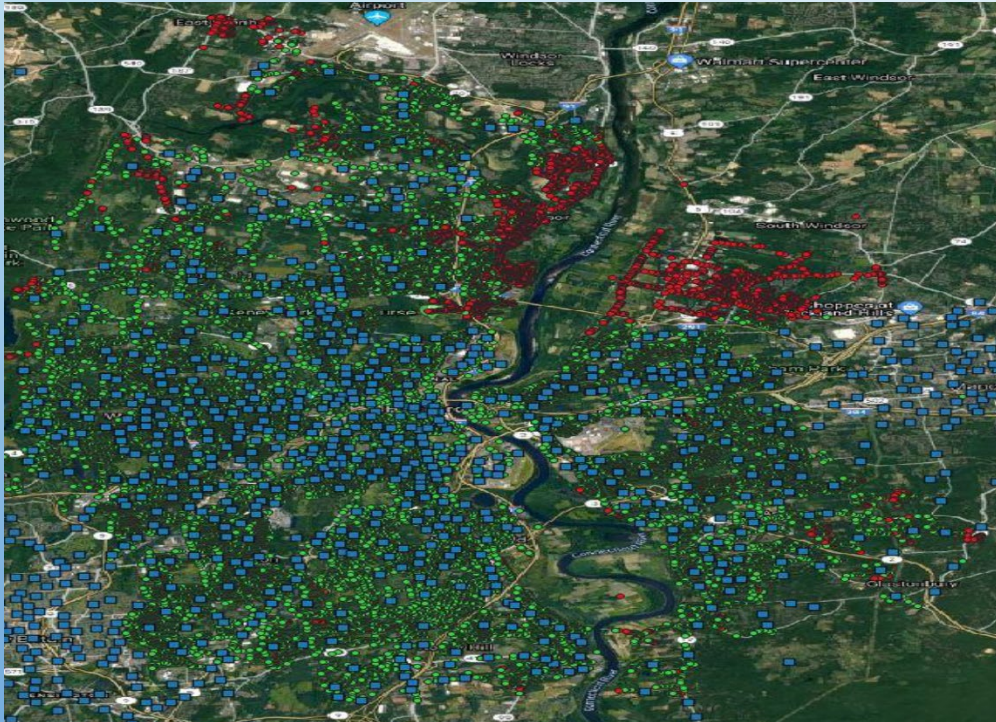
WATER CUSTOMERS

- APPROXIMATELY 100,000 ACTIVE METERED WATER CUSTOMERS
- ITRON 60W & 100W READING DEVICES INSTALLED, DRIVE BY READING
- AVERAGE DEVICE AGE 8.55 YEARS, 20 YEAR LIFESPAN
- APPROXIMATE MATERIAL COST (METER & DEVICE) SYSTEMWIDE \$17.2M – EXISTING SYSTEM

AMI PILOT PROGRAMS

- KAMSTRUP FIXED NETWORK - COMPLETED
- NEPTUNE LORA FIXED NETWORK - COMPLETED
- ITRON – CNG FIXED NETWORK & CELLULAR – MARCH 2022 START

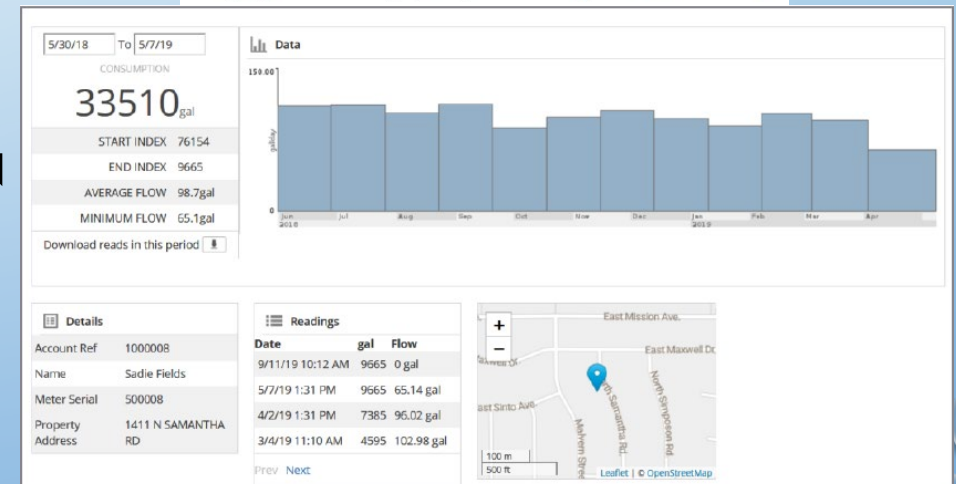
ITRON PILOT & BENEFIT



- UTILIZE CNG FIXED NETWORK TO READ EXISTING 60W & 100W DEVICES
- 60W DAILY, 100W HOURLY READ
- ESTIMATE 60%-70% SUCCESS RATE
- MAXIMIZE EXISTING INVESTMENT IN DEVICES
- TRANSITION TO 500W (CELLULAR) DEVICES AT START OF PROGRAM
- 2 PILOT AREAS IN EAST HARTFORD & WEST HARTFORD
- POTENTIAL FOR AMI BY OCTOBER 2022, PENDING CONTRACT NEGOTIATIONS
- REDUCED METER READING STAFF

FACTORS FOR CONSIDERATION

- COST OF SYSTEM – READING DEVICES, METERS, COST PER READ
- MAXIMIZING EXISTING INVESTMENT (METERS & DEVICES)
- MINIMIZING TIME TO SYSTEMWIDE AMI
- CUSTOMER MONITORING OF USAGE
- REDUCING STAFF READING TIME
- DAILY TRACKING WATER CONSUMPTION VS PRODUCTION
- ALLOW OPEN BID OF METERS
- FOCUS STAFF



Water Bureau

MDC EV Charging Stations

March 9, 2022

Proposed EV Charging Stations

Objective:

- Provide visitors access to EV charging stations while utilizing passive recreational facilities and provide low emission technologies.

Locations:

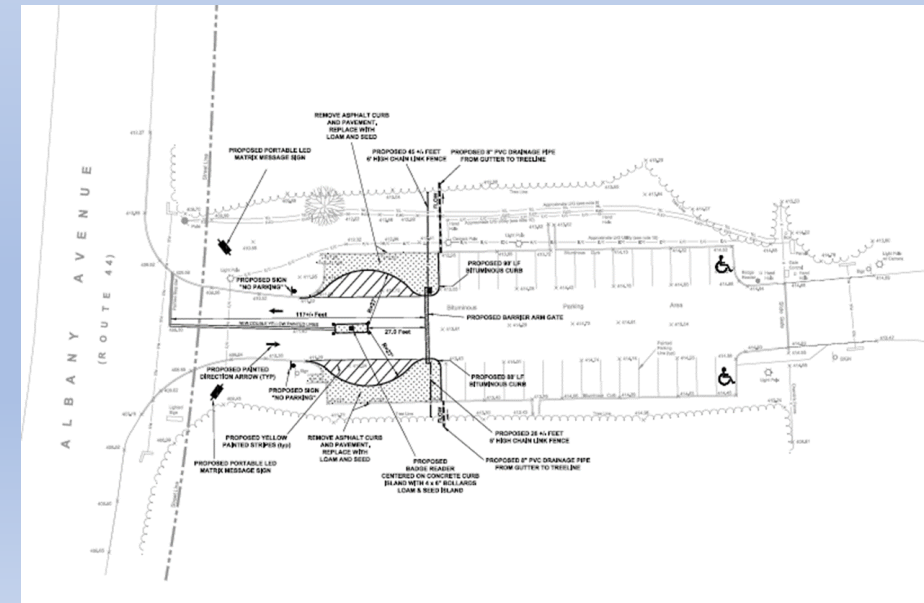
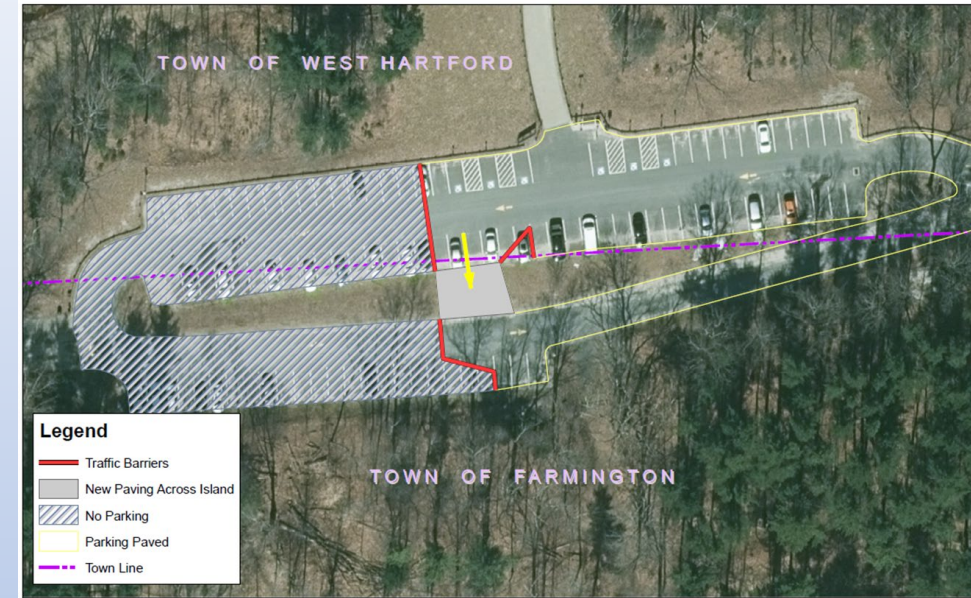
- West Hartford Filters Public Parking Area
- Reservoir No. 6 Public Parking Area

Utilization of New Eversource Program

- Program has been active in MA, but just released in CT in 2022
- Funding Details:
 - 100% of all electrical infrastructure
 - 50% shared costs of charging station

Next Steps:

- District staff meeting with Eversource contractor to site possible locations, March 7.
- Submit application to the program
- Develop implementation plan and execute upon approval



Proposed EV Charging Stations

Further Next Steps

- The District will evaluate EV Charging vendors for Hardware and Software and annual maintenance plans
- Review rate setting and revenue options
- Upon completion communicate availability of charging stations to the public

Costs and Revenue (Possible Options) – Assume 1,000 (1 Hr) uses/year -To be reviewed during discussions with Eversource and Vendors

Costs	
Item	
2-Post Charging Station (50%)	\$ 5,000.00
Insurance on Equipment	\$ 480.00
Cloud Service	\$ 520.00
Coud Provider Fee/Charge (\$1/Charge)	\$ 1,000.00
Electricity Charge (\$0.19/kWh)	\$ 3,610.00
Internal Labor (Administrative)	\$ 1,000.00

Revenues	
Item	
Charge (19kWh Charge - High Capacity -\$6/Hour)	\$ 6,000.00
Idle Fee (\$0.50/hr)	\$ 1,000.00

