



**WATER BUREAU
SPECIAL MEETING
WEDNESDAY, MARCH 23, 2022
4:00 PM**

<u>Location</u>	<u>Commissioners</u>	
Board Room	Adil	Lewis
District Headquarters	Buell	Mandyck
555 Main Street, Hartford	DiBella (Ex-Officio)	Pane
	Gardow	Petosky
	Holloway	Salemi
Dial in #: (415)-655-0001;	Ionno	Sweezy
Access Code: 43808661#	Lebeau	Taylor
Meeting Video Link	Quorum: 7	

1. CALL TO ORDER
2. ELECTION OF CHAIRPERSON
3. ELECTION OF VICE-CHAIRPERSON
4. PUBLIC COMMENTS RELATIVE TO AGENDA ITEMS
5. APPROVAL OF MEETING MINUTES OF NOVEMBER 22, 2021
6. CONSIDERATION AND POTENTIAL ACTION RE: RECREATION RATES AND PASSIVE RECREATION
7. DISCUSSION RE: POTENTIAL SALE OF SURPLUS CLASS III WATERSHED LAND
8. DISCUSSION RE: COLEBROOK RIVER LAKE DAM
9. REPORT RE: ADVANCED METER INFRASTRUCTURE UPDATE
10. OPPORTUNITY FOR GENERAL PUBLIC COMMENTS
11. COMMISSIONER COMMENTS & QUESTIONS
12. ADJOURNMENT

Water Bureau
MDC RECREATION AREAS

March 23, 2022 UPDATE

Lake McDonough Area

Towns:

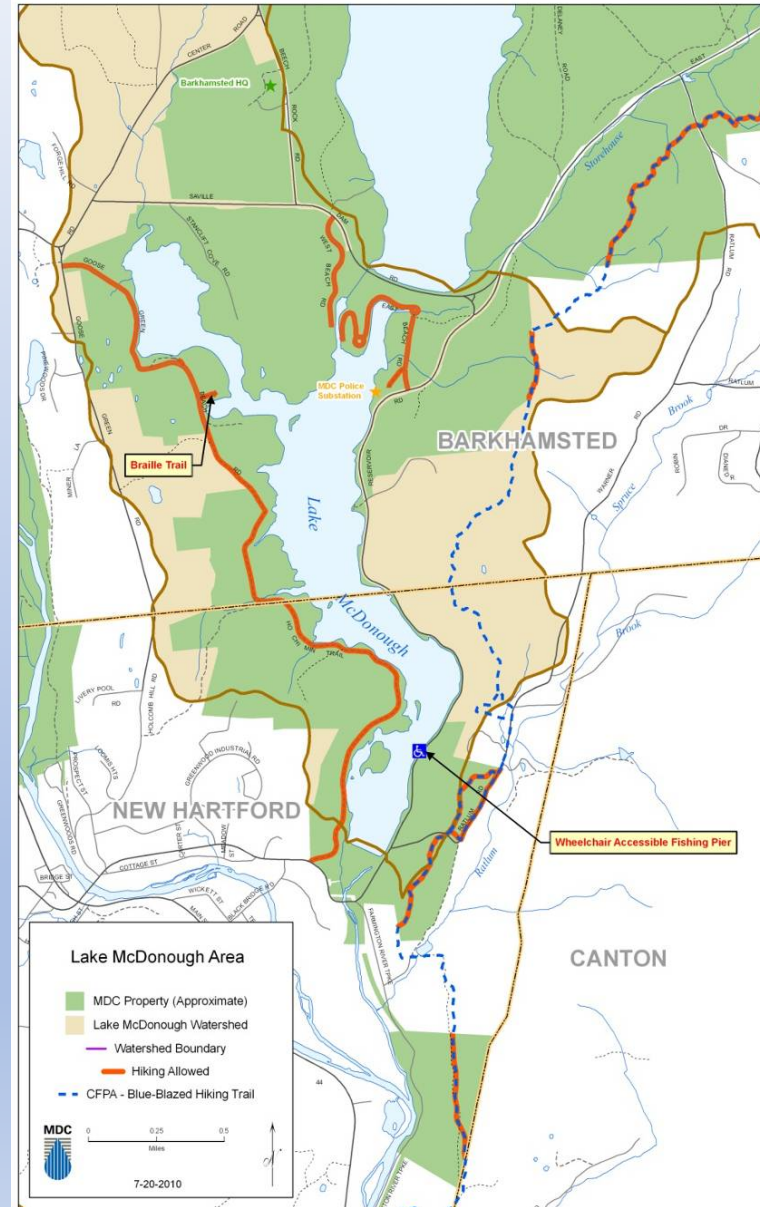
- Barkhamsted, CT (Taxes: \$56,651.60)
- New Hartford, CT (Taxes: \$54,822.50)

Acreage: 1,626 acres

Miles of Trails: ~6 miles

Recreation Uses:

- Swimming at Stancliff Cove
- Boating (CT DEEP Fishing Tournaments)
- Fishing (District Fish Stocking)
- Picnicking
- Ice Fishing (Prohibited)



2022 RECREATION UPDATE- Lake McDonough

Lake McDonough Boathouse and Boat Launch

- Maintain 2021 Operating Dates/Times
 - Weekend Only from Opening Day (April 8) to May 1
 - 7 Days per week starting on May 2
- Restricted to Private Boats Only, No MDC Boat Rentals, No Fishing Tournaments

Goal: “Passive Recreation”

- Recreation access by card reader for boat access
- Yearly Permit Access Only, Eliminate Day Pass.
- Installation of card access gate to only allow passholders – proposed for 2022
- Similar system used by Regional Water Authority in New Haven
- Access to walking trails and Picnic Areas from Saville Dam Parking Areas

Communications: Member Towns, Local Watershed Towns and State Officials

- The District communicates rates and registration process on the District website
- Cards will be issued upon receiving application and payment
- Continue to respond to concerns regarding rate adjustments
 - Senator Witkos

Glastonbury – Boat Launch		
	Seasonal Permits	Daily Launch
Residents	\$60/year	\$20/day
Non-Residents	\$120/year	\$40/day

Rocky Hill Boat Launch
FEES:
Rocky Hill resident season pass(purchase in office)\$60.00
Non-resident season pass(purchase in office)\$100.00
Without season pass,daily fee payable to attendant\$30.00
(Fees will be collected any time attendant is present.)

Lake McDonough – 2021 Boating Summary

Boating Pass Sales Spring/Summer 2021

Type of Pass	Cash/Check	Credit Card	Gross Sales Amount	Credit Card Fees	Net Sales
Season Pass-Non-Resident (\$120 each)	14	63	\$ 9,240.00	(\$202.86)	\$9,037.14
Season Pass- Resident (\$60 each)	18	62	\$ 4,800.00	(\$102.92)	\$4,697.08
Day Pass-Non-Resident (\$40 each)	3	85	\$ 3,520.00	(\$96.90)	\$3,423.10
Day Pass- Resident (\$20 each)	1	69	\$ 1,400.00	(\$42.78)	\$1,357.22
Equipment Costs*					(\$2,125.79)
Cellular Plans (\$80/Month)**					(\$560.00)
Total YTD	36	279	\$ 18,960.00	(\$445.46)	\$15,828.75

*Includes Cost of 2 iPads, 2 iPad Cases, Cellular Signal Booster, 2 Square Contactless Readers, and 2 Square Magstripe Readers

**Includes Cost of Cellular Plan YTD (April, May, June, July, August, September and October)

Labor Costs for Temporary Staff to Operate Boat Launch

	# of Weeks	Labor Costs
Early Season	3	\$2,880
Summer Season	15	\$50,400
		\$53,280

Other Costs

- MDC also has a dedicated Conservation Ranger who manages Temporary staff for the 18 weeks as well as coordinates internal activities for the season.
- MDC Communications and Finance provides support.
- MDC Water Supply Maintenance Staff provide all prep/closure and ongoing maintenance during the boating season

2022 RECREATION UPDATE- Lake McDonough

STANCLIFF COVE (Per EASEMENT Agreement – June 1966)

(Barkhamsted/New Hartford Town Beach)

- Review Town Beach opening for swimming
- Towns manage the launching of carry-in vessels from Stancliff Cove

Stancliff Cove (Annual Pass)	
RESIDENTS.....	\$60.00
NON-RESIDENT.....	\$325.00
RESIDENT SENIOR*...	\$45.00
NON-RESIDENT SENIOR*.	\$250.00

The background is a light blue gradient with several realistic water droplets of various sizes scattered across it. The droplets have highlights and shadows, giving them a three-dimensional appearance. The main title is centered in the middle of the page.

ADVANCED METER INFRASTRUCTURE UPDATE

WATER BUREAU

MARCH 23, 2022

OVERVIEW & PILOT SUMMARY

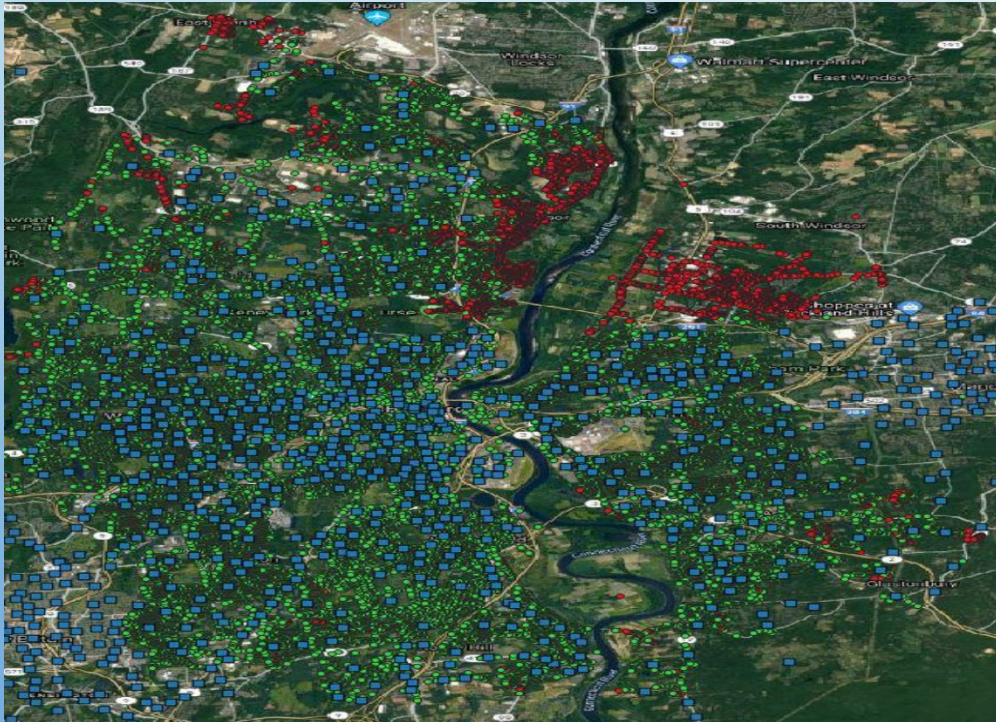
WATER CUSTOMERS

- APPROXIMATELY 100,000 ACTIVE METERED WATER CUSTOMERS
- ITRON 60W & 100W READING DEVICES INSTALLED, DRIVE BY READING
- AVERAGE DEVICE AGE 8.55 YEARS, 20 YEAR LIFESPAN
- APPROXIMATE MATERIAL COST (METER & DEVICE) SYSTEMWIDE \$17.2M – EXISTING SYSTEM

AMI PILOT PROGRAMS

- KAMSTRUP FIXED NETWORK - COMPLETED
- NEPTUNE LORA FIXED NETWORK - COMPLETED
- ITRON – CNG FIXED NETWORK & CELLULAR – MARCH 2022 START

ITRON PILOT & BENEFIT



- UTILIZE CNG FIXED NETWORK TO READ EXISTING 60W & 100W DEVICES
- 60W DAILY, 100W HOURLY READ
- ESTIMATE 60%-70% SUCCESS RATE
- MAXIMIZE EXISTING INVESTMENT IN DEVICES
- TRANSITION TO 500W (CELLULAR) DEVICES AT START OF PROGRAM
- 2 PILOT AREAS IN EAST HARTFORD & WEST HARTFORD
- POTENTIAL FOR AMI BY OCTOBER 2022, PENDING CONTRACT NEGOTIATIONS
- REDUCED METER READING STAFF

FACTORS FOR CONSIDERATION

- COST OF SYSTEM – READING DEVICES, METERS, COST PER READ
- MAXIMIZING EXISTING INVESTMENT (METERS & DEVICES)
- MINIMIZING TIME TO SYSTEMWIDE AMI
- CUSTOMER MONITORING OF USAGE
- REDUCING STAFF READING TIME
- DAILY TRACKING WATER CONSUMPTION VS PRODUCTION
- ALLOW OPEN BID OF METERS
- FOCUS STAFF

